



Quick Setup Guide

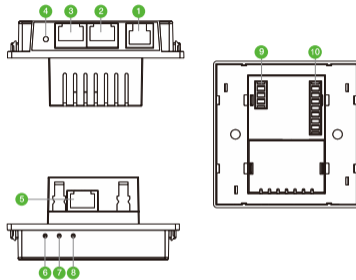
WIScloud In-Wall Access Point

Models: WCAP-W / WCAP-WS / WCAP-AC-W

Version: 1.0

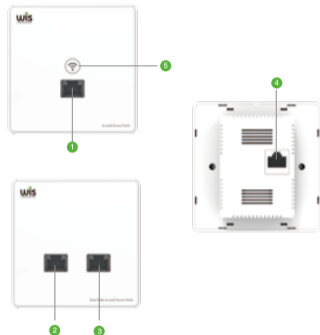
1 Interface

Interface



No.	Interface	Instruction	No.	Interface	Instruction
1		RJ45 Ethernet	6		Power LED
2		RJ11 Phone	7		WLAN LED
3		RJ45 Ethernet	8		LAN LED
4		Reset	9		For RJ11
5		48V PoE port	10		For RJ45

Interface



No.	Interface	Instruction
1	ETH	RJ45 Ethernet
2	ETH1	RJ45 Ethernet
3	ETH2	RJ45 Ethernet
4	PoE	48V PoE port
5		WiFi On/Off

2 Install the WCAP-W

Instructions before installing

- You may need tools below.



Screw driver

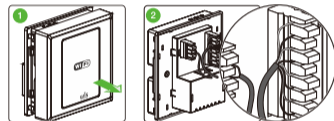


Cable knife

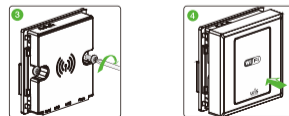


Cable pliers

Install the device



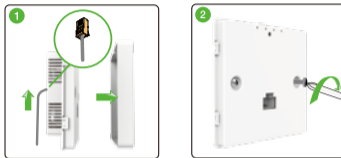
- Open the cover of the access point.
- Connect the Ethernet cable to the 8pin terminal strip with the order below (from top to bottom)
White/Orange-> Orange->> White/Green->> Blue->White/Blue-> Green->> White/Brown->> Brown



- Install the access point in to 86mm wall socket and tighten with screws.
- Put on the cover back and finish installation.

3 Install the WCAP-WS / WCAP-AC-W

■ Install the device

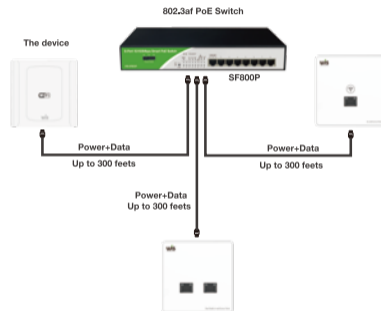


1. Open the cover of the access point and plug in the cable.
2. Install the access point in to 86mm wall socket and tighten with screws.



3. Put on the cover back and finish installation.

■ Power up with 48VDC PoE switch

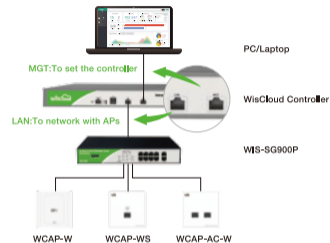


⚠ NOTE

If you use other PoE switch which is not provided by Wisnetworks, make sure it supports 802.3af PoE.

4 Managed by Controller

1. Check all wires are correctly connected.
2. Put the cloud controller in the same network { subnet } with the access point.
3. Connect one PC to the controller MGT port and login web **192.168.188.2**



4. When login page appears enter "admin" in both the username and password fields.



5. Go to the **DEVICE** menu of the controller, and you will find the new access point waiting for admit. Simply press the admit button and then ap will be managed.
6. For more configurations like cloud deployment and wireless settings please visit website **wisnetworks.com**

Limited Warranty

Wisnetworks warrants that the product(s) furnished hereunder (the "Product(s)") shall be free from defects in material and workmanship for a period of two (2) year from the date of shipment by Wisnetworks under normal use and operation. Wisnetworks sole and exclusive obligation and liability under the foregoing warranty shall be for Wisnetworks, at its discretion, to repair or replace any Product that fails to conform to the above warranty during the above warranty period. The expense of removal and reinstallation of any Product is not included in this warranty. The warranty period of any repaired or replaced Product shall not extend beyond its original term.

Warranty Condition

The above warranty does not apply if the Product:

- (a) has been modified and/or altered, or an addition made thereto, except by Wisnetworks, or our authorized representatives, or as approved by Wisnetworks in writing;
- (b) has been painted, rebranded or physically modified in any way;
- (c) has been damaged due to errors or defects in cabling;
- (d) has been subjected to misuse, abuse, negligence, abnormal physical, electromagnetic or electrical stress, including lightning strikes, or accident;
- (e) has been damaged or impaired as a result of using third party firmware;
- (f) has no original Wisnetworks MAC/SN label, or is missing any other original Wisnetworks label(s);
- (g) human reasons without according to the guide or user manual.

In addition, the above warranty shall apply only if: the product has been properly installed and used at all times in accordance, and in all material respects, with the applicable Product documentation; all Ethernet cabling runs use CAT5 (or above), and for outdoor installations, shielded Ethernet cabling is used, and for indoor installations, indoor cabling requirements are followed.

Online Support

For more guide and help, please go to www.wisnetworks.com/support/ community.wisnetworks.com
You can contact email support@wisnetworks.com
We'll reply you within one weekday.

Wisnetworks Community

