

DrayTek

Vigor N65

802.11n USB Adapter



Your reliable networking solutions partner

User's Guide

V1.0

VigorN65 Wireless USB Adapter User's Guide

Version: 1.0

Date: 26/7/2011

Software Version: 1.0

Copyright 2011 All rights reserved.

Please visit www.draytek.com to get the newly updated manual at any time.

Copyright Information

Copyright Declarations

Copyright 2011 All rights reserved. This publication contains information that is protected by copyright. No part may be reproduced, transmitted, transcribed, stored in a retrieval system, or translated into any language without written permission from the copyright holders.

Trademarks

The following trademarks are used in this document:

- Microsoft is a registered trademark of Microsoft Corp.
- Windows, Windows 95, 98, Me, NT, 2000, XP, Vista and Explorer are trademarks of Microsoft Corp.
- Apple and Mac OS are registered trademarks of Apple Inc.
- Other products may be trademarks or registered trademarks of their respective manufacturers.

Safety Instructions and Approval

Safety Instructions

- This USB wireless network card is designed for indoor use only. DO NOT expose this network card to direct sun light, rain, or snow.
- DO NOT put this network card at or near hot or humid places, like kitchen or bathroom. Also, do not left this wireless network card in the car in summer.
- This network card is small enough to put in a child's mouth, and it could cause serious injury or could be fatal. If they throw the network card, the card will be damaged. PLEASE KEEP THIS NETWORK CARD OUT THE REACH OF CHILDREN!
- This network card will become hot when being used for long time (*This is normal and is not a malfunction*). DO NOT put the network card on a paper, cloth, or other flammable objects after the network card has been used for a long time.
- There's no user-serviceable part inside the network card. If you found that the network card is not working properly, please contact your dealer of purchase and ask for help. DO NOT disassemble the network card by your self, warranty will be void.
- If the network card falls into water, DO NOT USE IT AGAIN BEFORE YOU SEND THE CARD TO THE DEALER OF PURCHASE FOR INSPECTION.
- If you smell something strange or even see some smoke coming out from the network card, switch the computer off immediately, and call dealer of purchase for help.

Warranty

We warrant to the original end user (purchaser) that the router will be free from any defects in workmanship or materials for a period of **one (1)** years from the date of purchase from the dealer. Please keep your purchase receipt in a safe place as it serves as proof of date of purchase. During the warranty period, and upon proof of purchase, should the product have indications of failure due to faulty workmanship and/or materials, we will, at our discretion, repair or replace the defective products or components, without charge for either parts or labor, to whatever extent we deem necessary to restore the product to proper operating condition. Any replacement will consist of a new or re-manufactured functionally equivalent product of equal value, and will be offered solely at our discretion. This warranty will not apply if the product is modified, misused, tampered with, damaged by an act of God, or subjected to abnormal working conditions. The warranty does not cover the bundled or licensed software of other vendors. Defects which do not significantly affect the usability of the product will not be covered by the warranty. We reserve the right to revise the manual and online documentation and to make changes from time to time in the contents hereof without obligation to notify any person of such revision or changes.

Be a Registered Owner

You can register your Vigor device via <http://www.draytek.com>.

Firmware & Tools Updates

Due to the continuous evolution of DrayTek technology, all routers will be regularly upgraded. Please consult the DrayTek web site for more information on newest firmware, tools and documents.

<http://www.draytek.com>

European Community Declarations

Manufacturer: DrayTek Corp.

Address: No. 26, Fu Shing Road, HuKou County, HsinChu Industrial Park, Hsin-Chu, Taiwan 303

Product: VigorN65 Wireless Adapter

DrayTek Corp. declares that VigorN65 Wireless Adapter is in compliance with the following essential requirements and other relevant provisions of R&TTE Directive 1999/5/EEC.

The product conforms to the requirements of Low Voltage (LVD) Directive 2006/95/EC by complying with the requirements set forth in EN60950-1.

Regulatory Information

Federal Communication Commission Interference Statement

This equipment has been tested and found to comply with the limits for a Class B digital device, pursuant to Part 15 of the FCC Rules. These limits are designed to provide reasonable protection against harmful interference in a residential installation. This equipment generates, uses and can radiate radio frequency energy and, if not installed and used in accordance with the instructions, may cause harmful interference to radio communications. However, there is no guarantee that interference will not occur in a particular installation. If this equipment does cause harmful interference to radio or television reception, which can be determined by turning the equipment off and on, the use is encouraged to try to correct the interference by one of the following measures:

- Reorient or relocate the receiving antenna.
- Increase the separation between the equipment and receiver.
- Connect the equipment into an outlet on a circuit different from that to which the receiver is connected.
- Consult the dealer or an experienced radio/TV technician for help.

This device complies with Part 15 of the FCC Rules. Operation is subject to the following two conditions:

- (1) This device may not cause harmful interference, and
- (2) This device may accept any interference received, including interference that may cause undesired operation.

Please visit <http://www.draytek.com/user/AboutRegulatory.php>



This product is designed for the 2.4GHz/5GHz WLAN network throughout the EC region and Switzerland with restrictions in France.

Table of Contents

1

Introduction.....	7
--------------------------	----------

2

Installation Overview.....	9
-----------------------------------	----------

2.1 Package Content.....	9
2.2 Familiar with your new wireless network card.....	9
2.3 System Requirement.....	10
2.4 Installation Procedure	10
2.5 Uninstalling USB Driver.....	15

3

Configuration	17
----------------------------	-----------

3.1 Connect to Wireless Access Point	17
3.1.1 Using Wireless USB Adapter Utility.....	17
3.1.1.1 Scan for Other Wireless Devices.....	19
3.1.1.2 Connect to an Access Point	22
3.1.1.3 Add an Access Point to Profile	24
3.1.2 Using Windows Zero Configuration	30
3.2 Profile Management.....	33
3.2.1 Add a profile.....	34
3.2.2 Edit an existing profile.....	35
3.2.3 Delete an existing profile	35
3.2.4 Activate a profile	36
3.3 Advanced Settings	36
3.4 View Network Statistics	37
3.5 WMM Setting.....	38
3.6 WPS Configuration.....	39
3.6.1 WPS Setup - PBC (Push-Button Configuration).....	40
3.6.2 WPS Setup - PIN	41
3.7 SSO.....	43
3.8 CCX.....	44
3.9 Radio On/Off	45
3.8 About	46

4

Soft-AP Function	47
4.1 Switch to AP Mode and Basic Configuration.....	47
4.2 Security Setting	50
4.3 Access Control	52
4.4 Connection Table	53
4.5 Event Log	54
4.6 Statistics	55
4.7 About	56

5

Appendix	57
5.1 Specification	57
5.2 Troubleshooting.....	58
5.3 Glossary	59

1

Introduction

Thank you for purchasing this high-speed wireless dual band network card! This network card can operate in 2.4GHz or 5GHz wireless network. Excepting common wireless standards 802.11a/b/g, this wireless network card is also able to access 802.11n wireless networks - data transfer rate is 300Mbps, and that's six times faster than 802.11g wireless network!

With easy-to-install USB 2.0 interface - a very common expansion port of computers - plug this wireless network card into any empty USB port of your computer, just that simple!

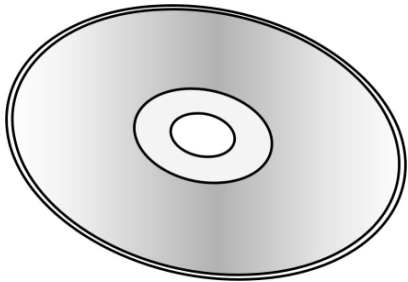
Other features of this wireless network card including:

- High-efficiency antenna expands the scope of your wireless network.
- High-speed data transfer rate - Up to 300Mbps.
- WMM function: control the bandwidth required for different applications.
- Comply with 802.11a/b/g/n wireless networks.
- Supports major encryption methods like WEP, WPA, and WPA2 encryption.
- WPS configuration - You don't need an experienced computer technician to help you to get connected. Utilizing the software program of the card, you can get your computer connected by pushing a button or entering an 8-digit code. Pressing the button on the network card, the WPS connection can be activated as well.
- USB 2.0 interface - you can get it installed on your computer in just few seconds!

This page is left blank.

2 Installation Overview

2.1 Package Content

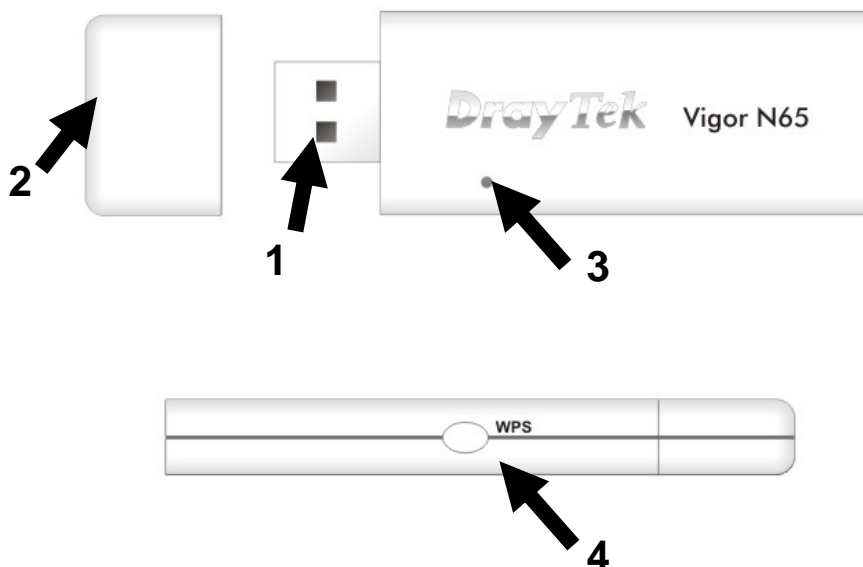


1 Driver/Utility/User Manual CD

2 Wireless Adapter

2.2 Familiar with your new wireless network card

1. USB Connector
2. Connector Cap (To protect USB connector when not in use)
3. Link/Activity LED
4. WPS Button



LED Name	Color	Light Status	Description
Radio Off	Green	Off	Wireless LAN function is disabled.
Radio On (No Link)	Green	Off	No link to wireless AP or Router.
		Slow blinking	Transmitting management information.
Radio On (Link to AP or Router)	Green	On	Link to wireless AP or Router.
		Blinking	Transmitting data or management information. If user activates WPS mode (hold WPS button for 3 seconds), the LED will be still blinking.

2.3 System Requirement

Before installing VigorN65,

- An empty USB 2.0 port (May not be able work with USB 1.1 port, and performance will be greatly reduced)
- Windows 2000, XP, Vista, and 7 operating system
- CD-ROM drive
- At least 100MB of available disk space

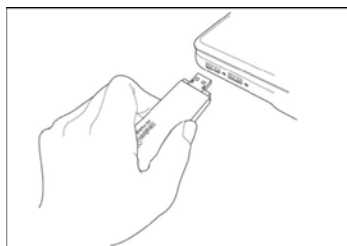
2.4 Installation Procedure

Here are some steps you will perform in establishing your wireless network connection:

1. Install the USB Driver for VigorN65 by using the Install CD.
2. Install the Wireless card.
3. Configure network protocol(s) that is required to communicate on your network. Most likely you will need the TCP/IP protocol.

Follow the step below to install USB driver.

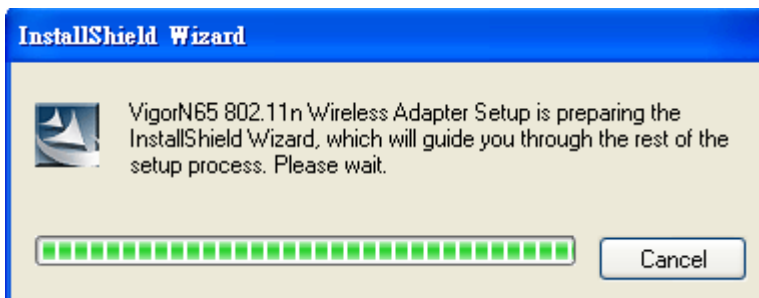
1. Insert the USB wireless network card into an empty USB 2.0 port of your computer when the computer is switched on. Never use force to insert the card, if you feel it's stuck, flip the card over and try again.

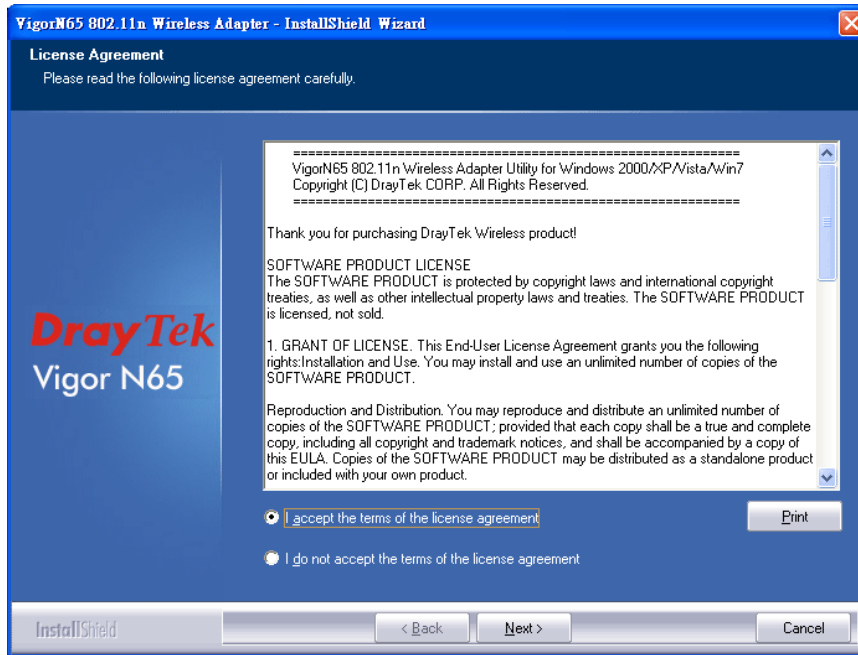


2. The following message will appear on your computer, click **Cancel**.

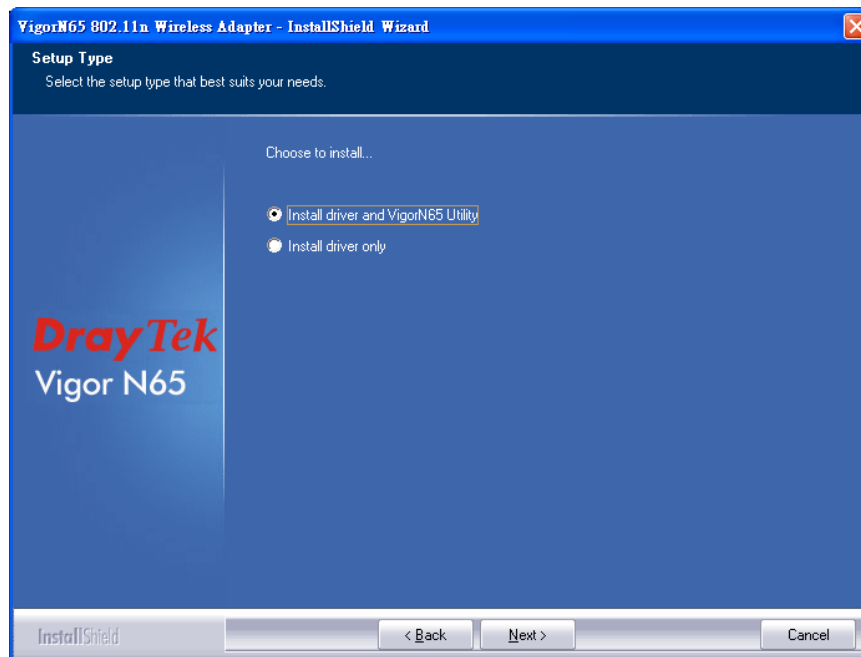


3. Insert the CD into your computer. The following screen will appear. Insert device driver CDROM into the CD/DVD ROM drive of your computer, and execute **VigorN65 Driver.exe** program. Please read the end user license agreement and click **I accept the terms of the license agreement** then click **Next** button, to accept license agreement.

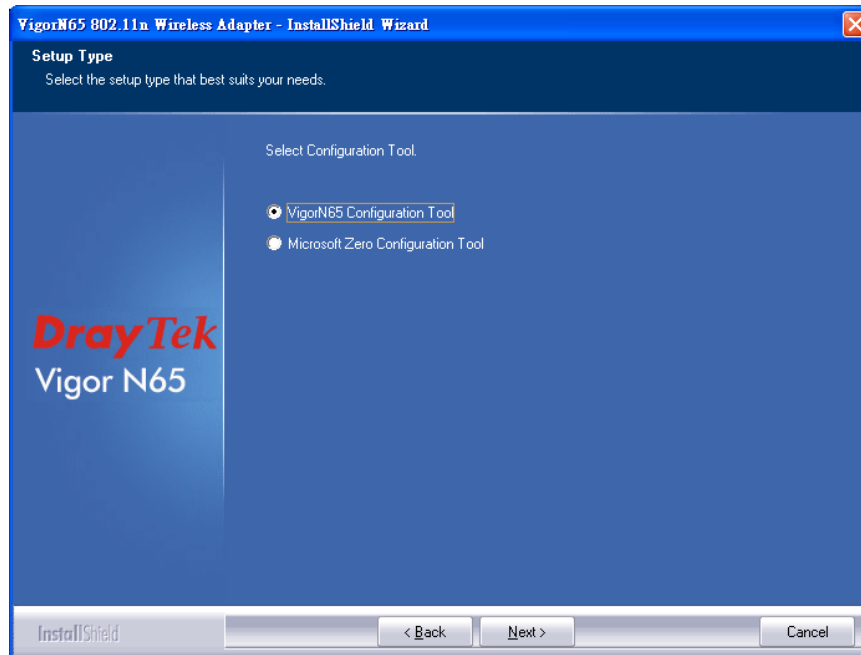




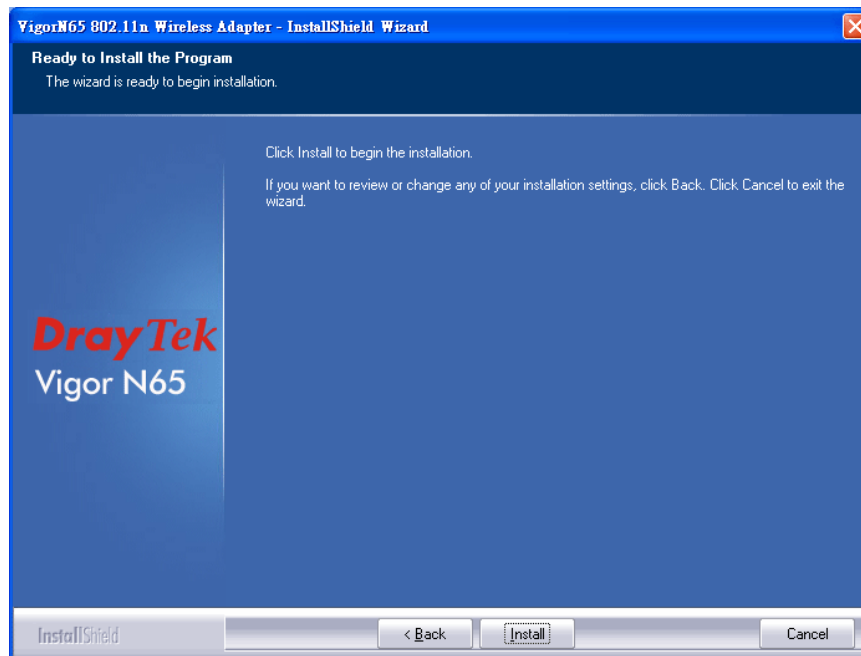
4. The setup wizard will appear as follows. It is recommend installing driver and utility by choosing **Install driver and VigorN65 Utility** if the network card is installing the first time. If you want to update the driver only, choose **Install driver only**. After choosing the correct option, click **Next**.



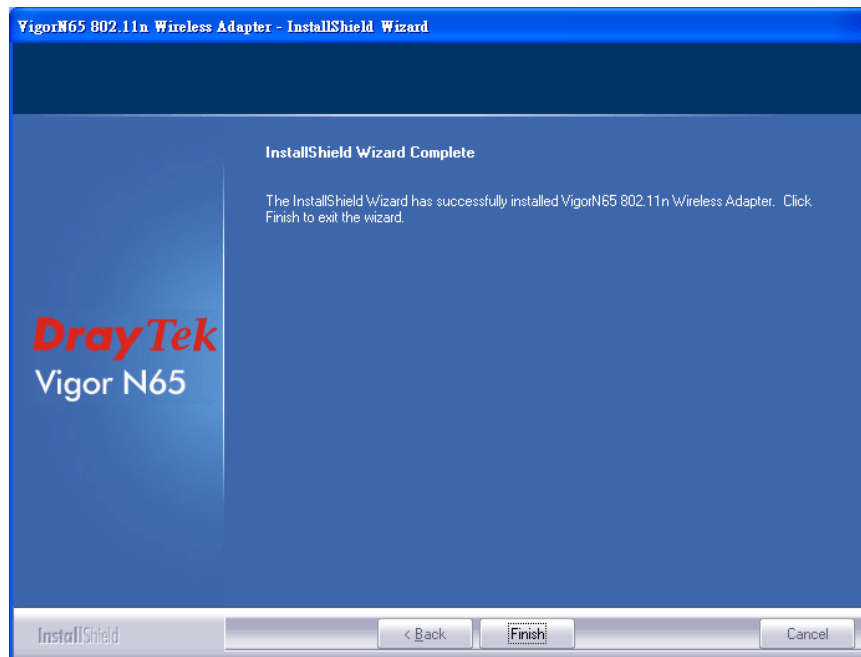
5. You can choose the configuration tool used to configure the wireless network card here. It's recommended to select **VigorN65 Configuration Tool**, which provides fully access to all functions of this wireless network card. Then click **Next**. If you prefer to use the wireless configuration tool provided by Windows 2000, XP, Vista, and 7, please select **Microsoft Zero Configuration Tool**.



6. Now you'll see the following message, please click **Install** to start utility installation. **If you see Found New Hardware message again, please ignore it and wait.**



7. Please wait while the install procedure is running. When you see this message, please click **Finish** to complete the driver installation process.

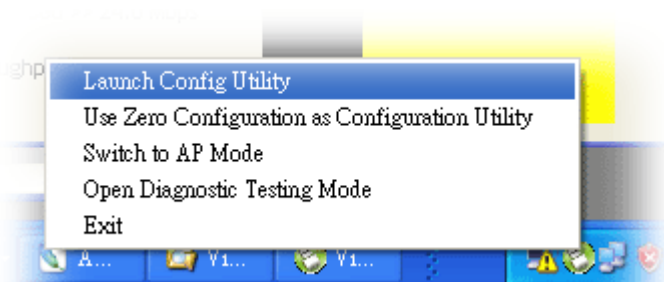


8. After installation is complete, wireless configuration utility will be shown in the desktop of your computer automatically. You will also see an icon at the lower-right corner of your windows system. If you put the mouse cursor on the icon, the status of wireless card will be displayed as a popup balloon.



9. When you want to configure your wireless connection, please right click on this icon, and a popup menu will appear. You can click **Launch Config Utility** to start configuration program.

If you want to close the configuration utility, please click **Exit**.



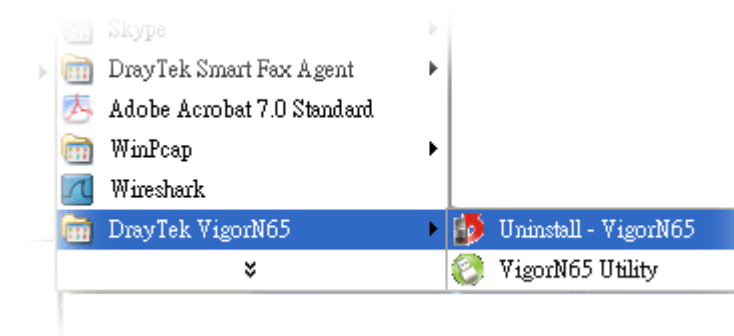
10. Please note that if you stopped config utility by **Exit** function, you'll not be able to maintain the wireless link to the access point you wish to use. In this case, you can start config utility again from **Start >> All Programs>>DrayTek VigorN65>>VigorN65 Utility**, as shown below.



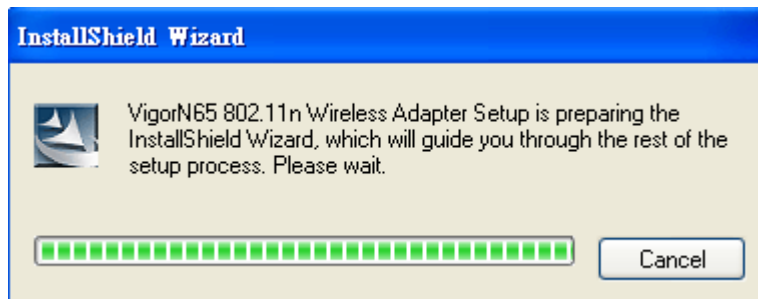
2.5 Uninstalling USB Driver

If you want to remove the driver for this wireless card, please do the following:

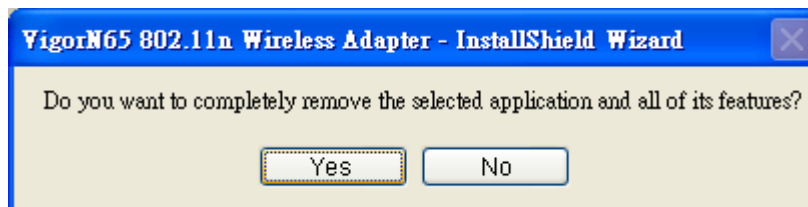
1. Run **Start >> Programs>> DrayTek VigorN65>>Uninstall – VigorN65**.



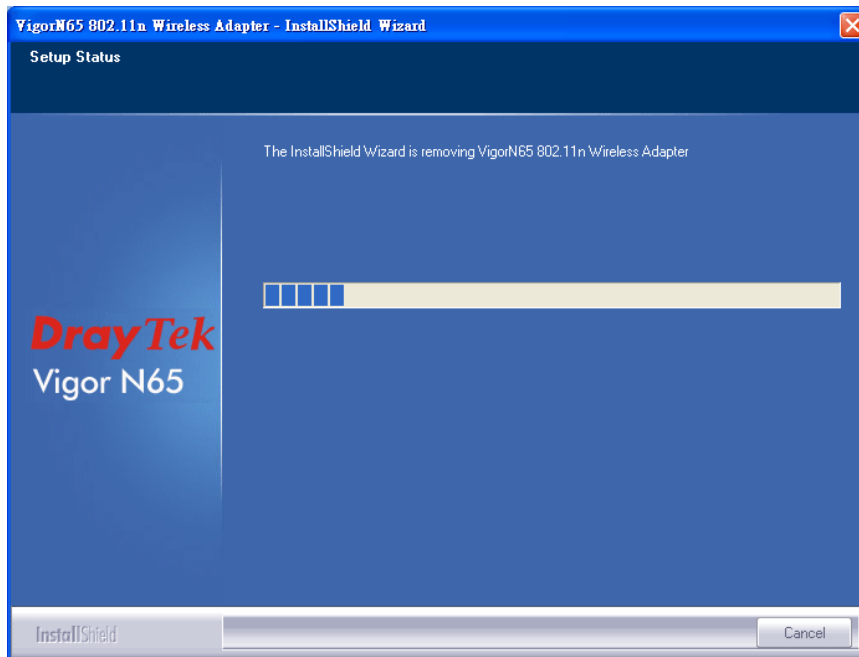
2. The Preparing Setup will appear.



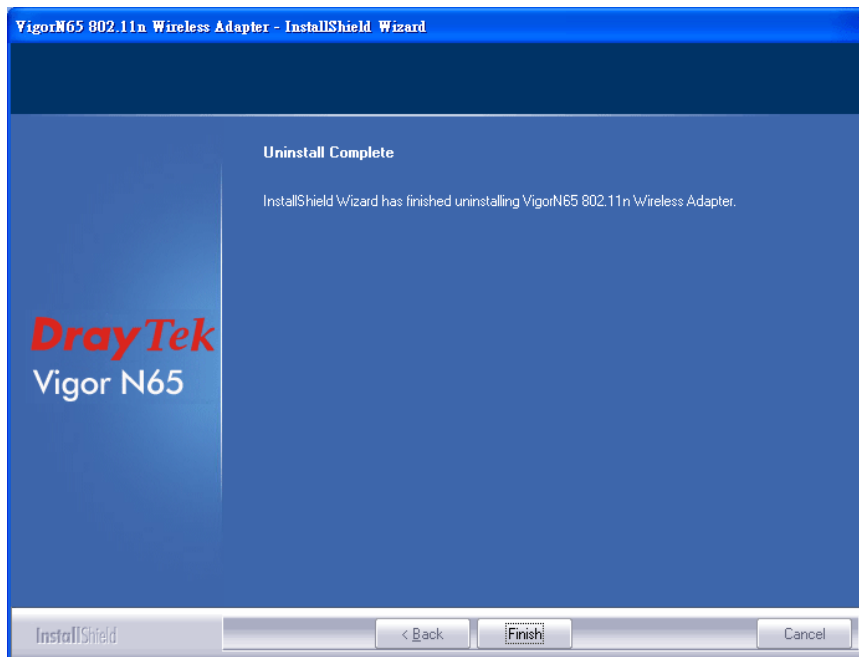
3. When the following screen appears, please click **Yes**.



- Now, the system starts to remove the corresponding files.



- When the following dialog appears, please click **Finish**.



3







Configuration

3.1 Connect to Wireless Access Point

After the driver is correctly installed, it will try to connect to any unencrypted wireless access point automatically. If you want to connect to a specific wireless access point, or the access point you wish to connect uses encryption, you have to configure the wireless network card and input required parameters, to get connected to the wireless access point you wish to connect.

NOTE: In Vista, the network card will not connect to any unencrypted wireless access point automatically.

The current status of wireless connection will be displayed by DrayTek configuration utility icon:

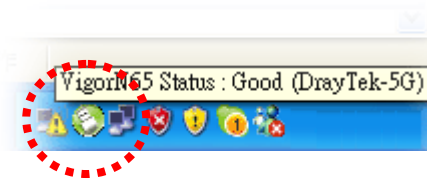
	Wireless connection is established, good signal reception.
	Wireless connection is established, normal signal reception.
	Wireless connection is established, weak signal reception.
	Connection is not established yet.
	Wireless network card is not detected.
	WEP Key error occurs.

There are two ways you can configure your wireless network card to connect to wireless access point: using the **VigorN65 Configuration Tool** and using built-in **Microsoft Zero Configuration Tool**.

3.1.1 Using Wireless USB Adapter Utility

After finish the driver installation, it is the time to configure the wireless utility for accessing into Internet through wireless connection.

Double click on VigorN65 utility icon on the system tray.

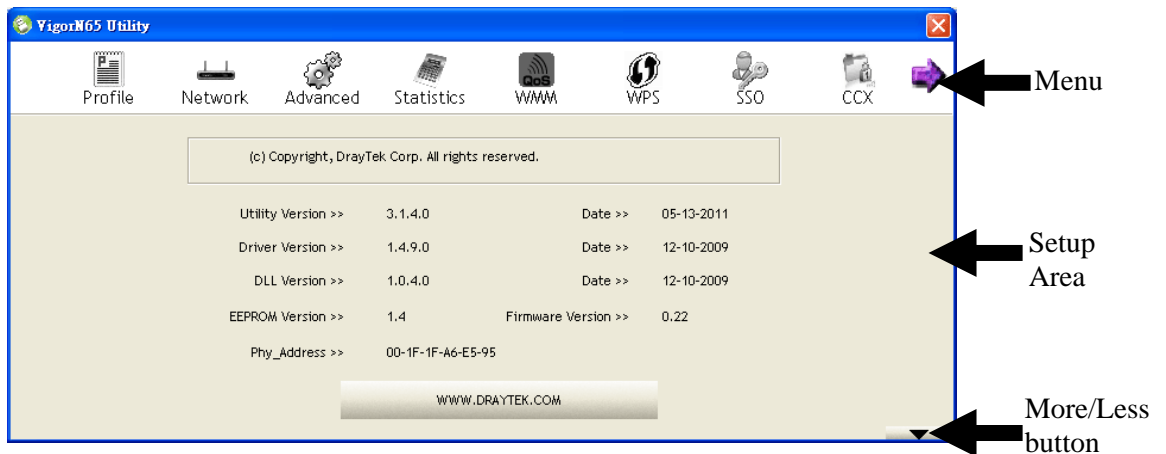


Or

Open the wireless monitor utility by clicking **Start >> Programs>> DrayTek VigorN65 >> VigorN65 Utility**.

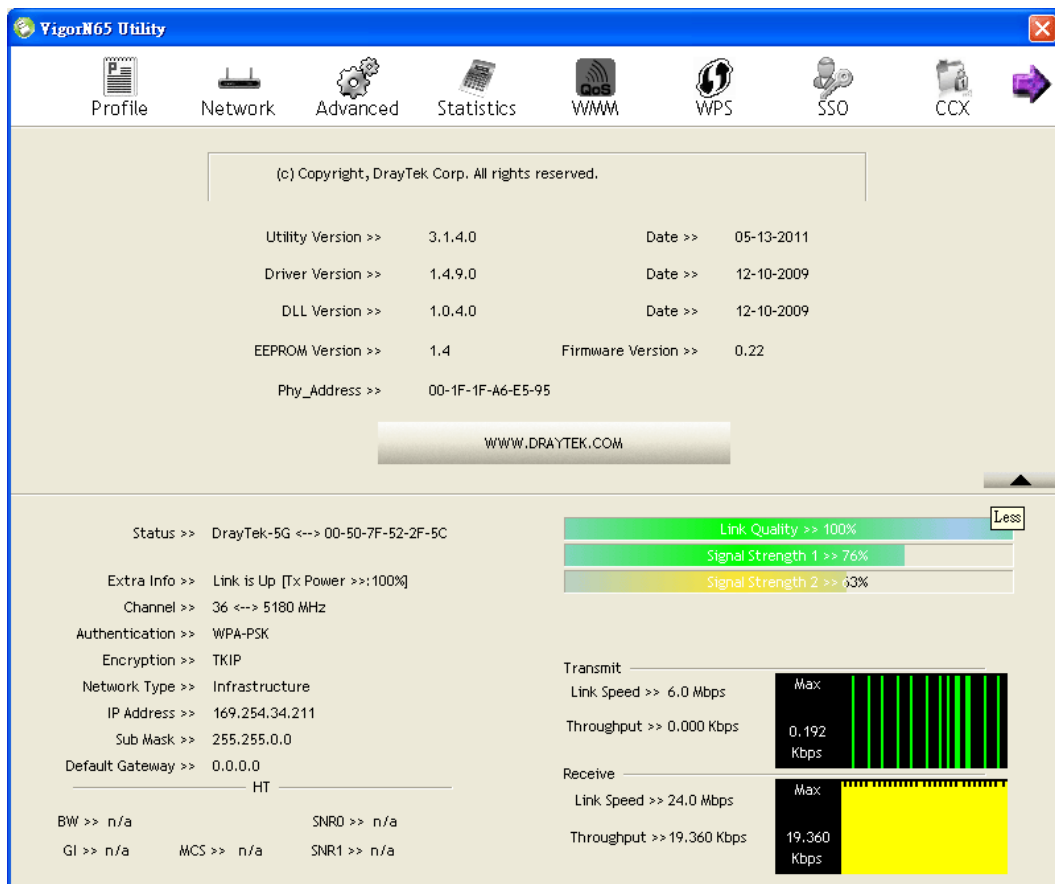


The **VigorN65 Utility** window will appear as the following. Basically, the software will scan and display available wireless AP automatically.



It consists two parts: Menu and setup area. You can select a setup function (Profile, Network, etc.) from menu, and corresponding setup items will be displayed at setup area.

Some function includes more information, and can not be fitted in setup area. In this case, you can click **More / Less** button to expand the setup utility window, to display more information:



You can click **More / Less** button again, and setup utility window will resume to its original size.

Note: If a setup item requires more information to complete the setup procedure, the setup utility window will expand automatically.

3.1.1.1 Scan for Other Wireless Devices

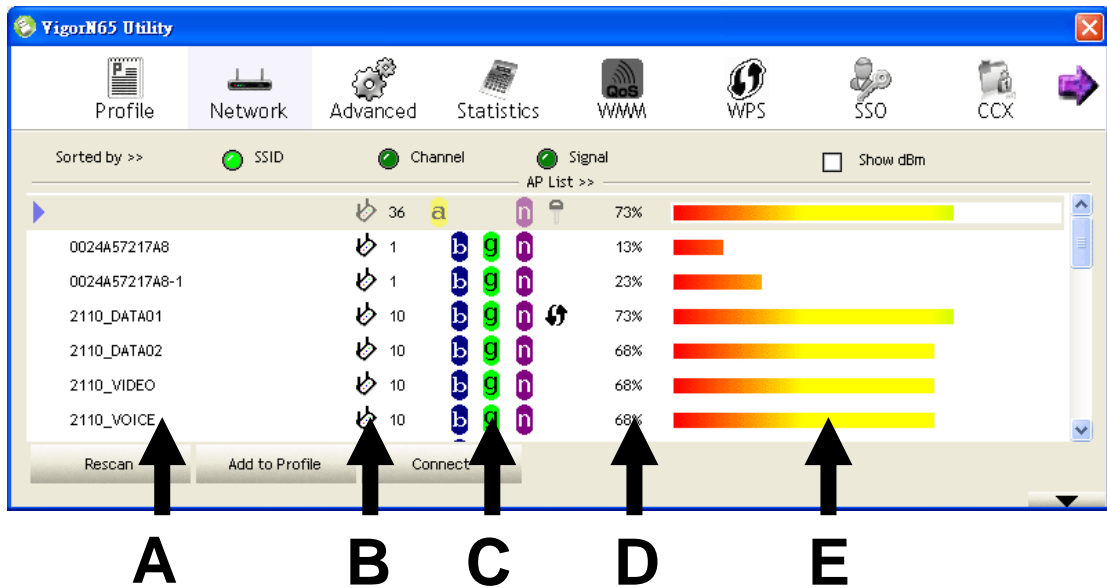
There are two kinds of wireless connection mode: Infrastructure and Ad-Hoc. Infrastructure mode is used by wireless access points, which is able to establish wireless connection for you and other wireless / wired network clients.

Ad-Hoc mode is also known as point-to-point mode, and in this mode, wireless devices such as computer or PDA will not be capable to establish wireless connection with more than one wireless device, and is suitable for establishing a one-to-one wireless connection between two wireless devices.

Before you can connect to any wireless access point or device by infrastructure or Ad-Hoc mode, there are two things you must know:




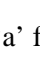






1. Wireless device's SSID (Service Set Identifier, someone will call it access point's name).
You can scan for the SSID of other wireless devices nearby, but if the SSID of the wireless device you wish to connect is hidden, you must know exact SSID before you can establish connection with it.
2. If the wireless device you wish to connect uses encryption, you must know its encryption key.

Please launch VigorN65 setup utility and it will scan for wireless access points near by:



Scan results will be displayed in the tab of **Network**, please check if the wireless device (access point or another computer) with the SSID you wish to connect is shown here.

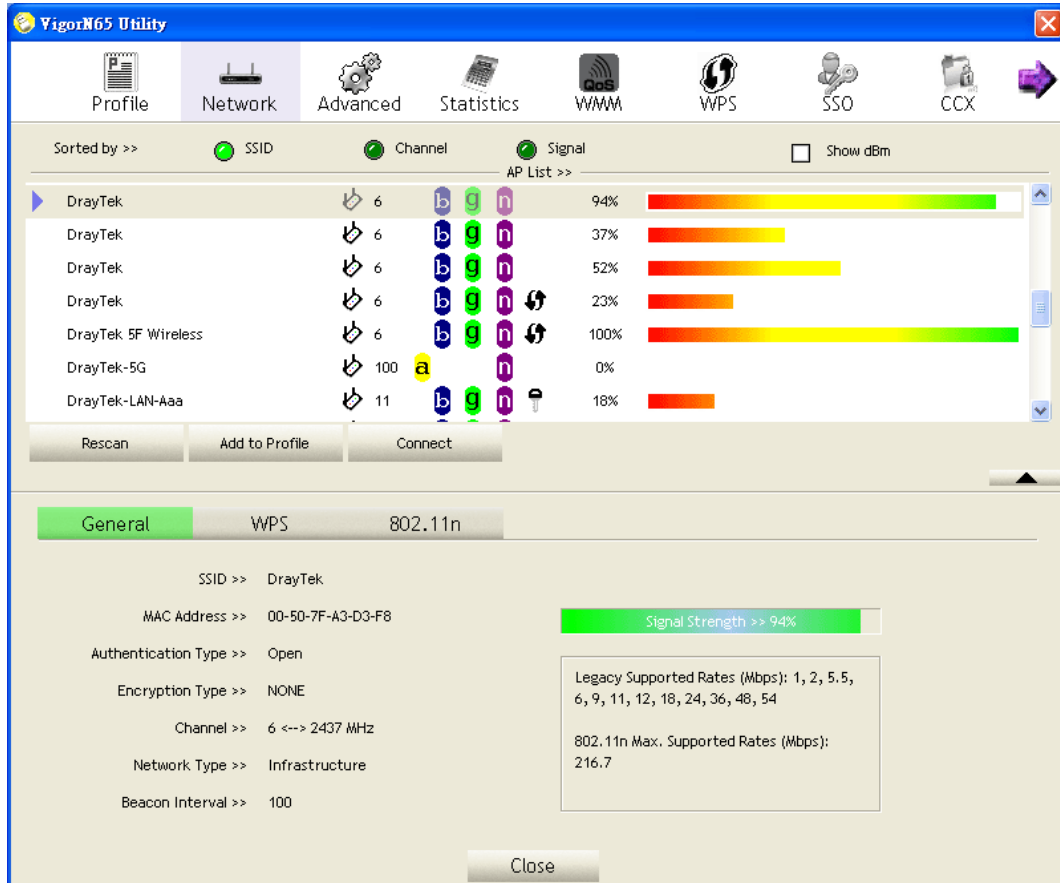
Scan result includes 5 types of information, they are:

A	<p>The SSID (Service Set Identifier) of wireless device. If nothing is displayed here, it means the SSID of this wireless device is hidden.</p> <p>If a ▶ symbol appears in front of the name of wireless device, means you've established connected with that wireless device.</p>
B	<p>The type of this wireless device and the channel number of this wireless device.</p> <ul style="list-style-type: none"> •  Means this wireless device is an access point •  Means this wireless device is a computer (Ad-Hoc mode, point-to-point connection)
C	<p>The wireless standard supported by this access point is displayed here.</p> <p>'n' for 802.11n , 'a' for 802.11a , 'g' for 802.11g , and 'b' for 802.11b .</p> <p>WPS icon  will appear when the access point supports WPS. If the access point uses encryption, a key icon  will appear.</p> <p>Note: When the access point supports WPS and WPS icon  is appeared, you will not see the key icon  here even through the access point uses encryption.</p>
D	Shows the signal strength of access point by percentage.
E	Shows the bar graph of the signal strength.

If you can not see the access point you wish to connect here, please click **Rescan** button to scan for access point again, until the one you preferred is displayed. You may have to click **Rescan** for more than two times before you can see the access point you wish to use here.

If you still can not see the access point you wish to use after clicking **Rescan** for more than five times, please move your computer closer to the location where the wireless access point is, or see instructions in Chapter 4-2 **Troubleshooting**.

If you wish to see detailed information for a specific access point, please double-click on it, and you'll be provided with its detailed information.



There are 3 types of technical information:

General: Displays basic information about this access point, such as SSID, MAC Address, authentication / encryption type, channel etc.

WPS: If this access point supports WPS (Wi-Fi Protected Setup), related information will be displayed here.

802.11n: If this access point complies with 802.11n, related information will be displayed here.

And here are descriptions of every setup item in setup area:

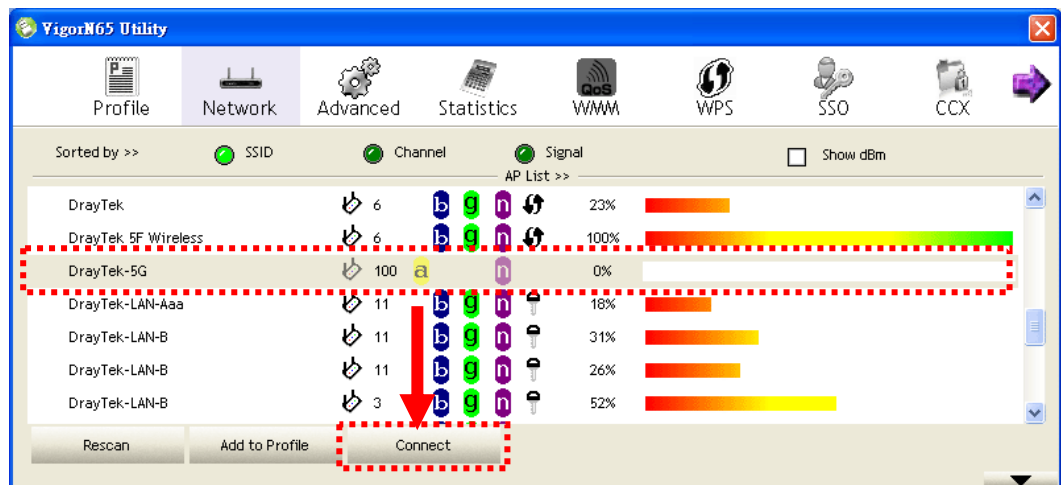
Item Name	Description
Sorted by >>	You can decide how to sort all listed access point by SSID, Channel, or Signal (signal strength).
Show dBm	Check this box to show the signal strength of access point, instead of percentage.
Rescan	Click this button to rescan access points. You can click this button for several times, if the access point you wish to use does not show in the list.

Add to Profile	You can store a specific access point to profile, so you can link to that access point directly next time, without inputting authentication key again. To add an access point to profile, you have to select an access point from the list first, then click Add to Profile button. Detailed instructions will be given below.
Connect	Connect to a selected access point. You have to select an access point from the list first and then click Connect to connect to the selected access point.

3.1.1.2 Connect to an Access Point

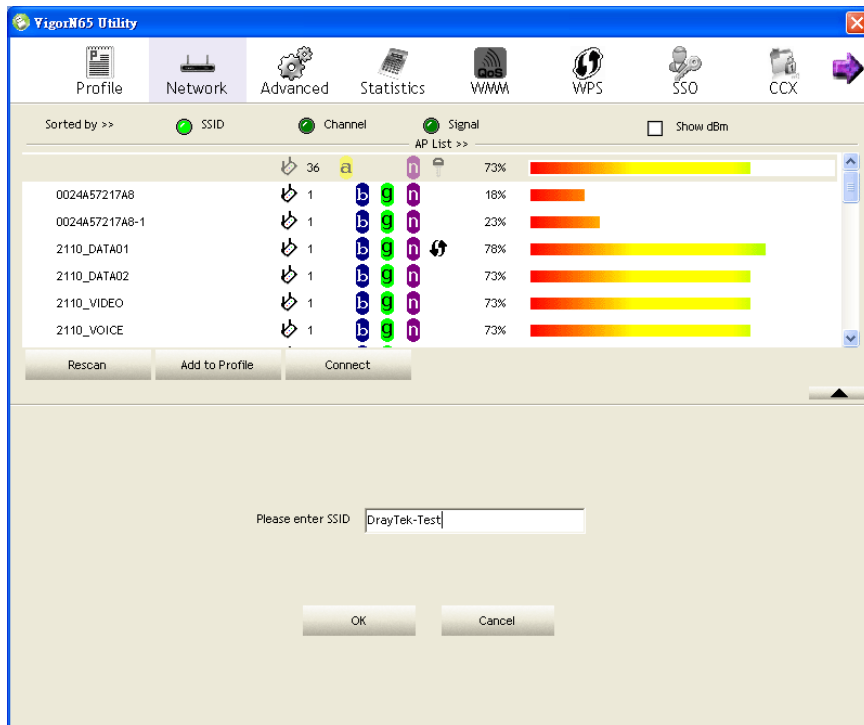
If the wireless access point you wish to connect is found, you can establish connection with it by clicking **Connect** button. Instructions will be given as follow:

1. Click the wireless access point or network device you wish to connect, it will be highlighted, then click **Connect**.

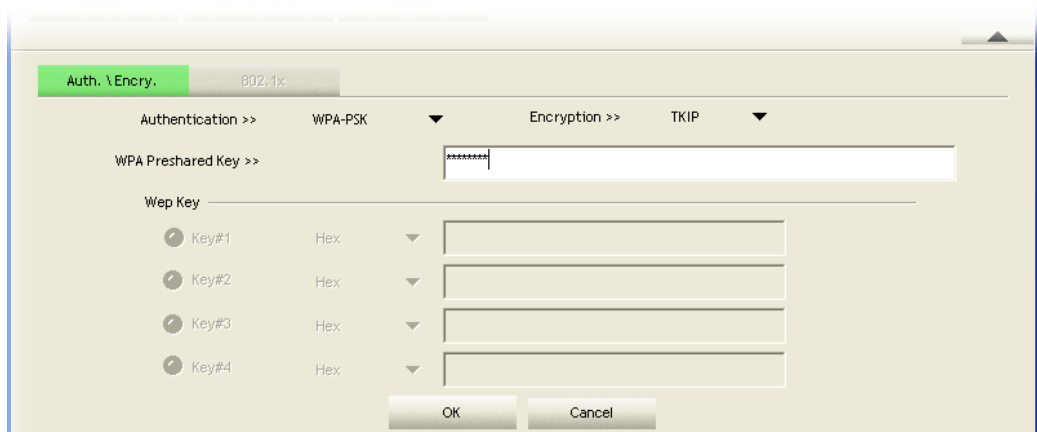


If the access point you selected does not use encryption, you'll be connected to this wireless access point within one minute. If the access point you selected uses encryption, please proceed to step 3.

2. If the wireless access point does not have SSID, you'll be prompted to input it now. Please ask the owner of wireless access point for the exact SSID and input it here, then click **OK** when ready. If the SSID you provided here is wrong, you'll not be able to connect to this access point.



3. If the wireless access point uses encryption, you will be prompted to input its WEP key or WPA preshared key.




4. Please ask the owner of the wireless access point you want to connect, and input the correct key here and then click **OK**. By checking **Show Password** box, the encryption key you inputted here will be displayed.

If the value you inputted here is wrong, you will not be able to connect to this wireless access point.

Authentication type will be selected by the authentication type of the access point automatically, please don't change it.

However, if you're connecting to an access point uses 802.1x authentication, you have to check **802.1x** box and input related information. Instructions for 802.1x authentication will be given later.

5. If the wireless access point is successfully connected, you'll see a  symbol appears in front of the name of wireless device.



You can put the mouse cursor over the VigorN65 configuration utility icon, and the brief information about link status and signal strength of current wireless connection will be shown as a popup balloon.



You can also click More / Less button (▲) to see detailed information of connected access point:

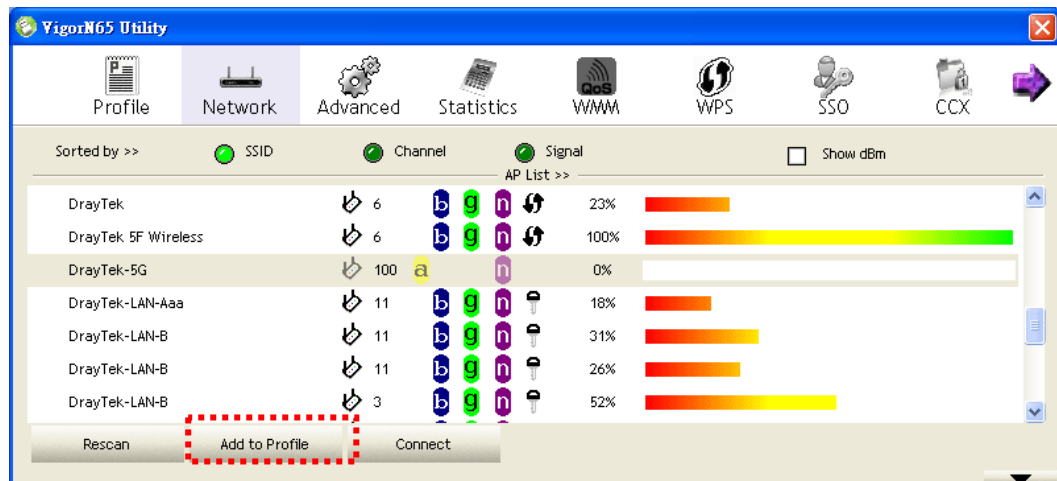


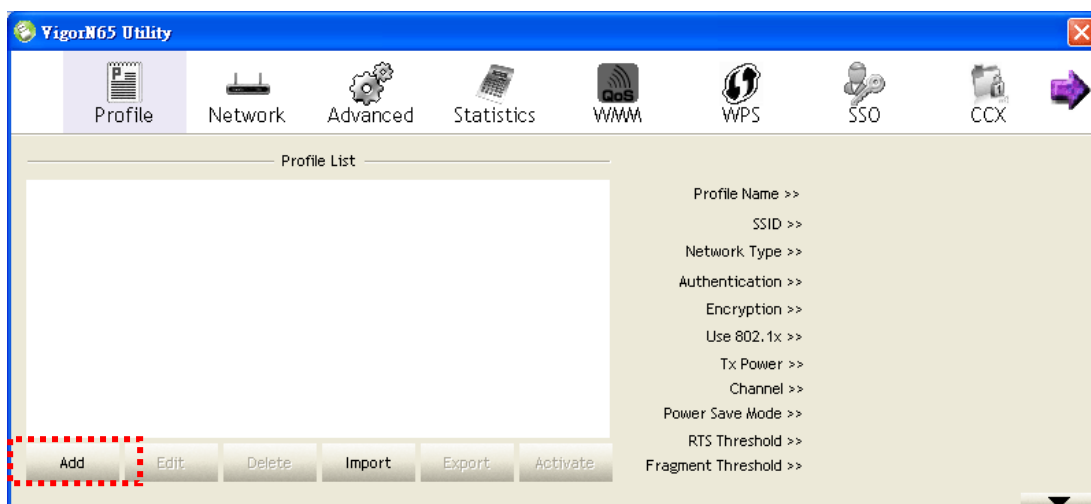
3.1.1.3 Add an Access Point to Profile

If you will connect to some specific wireless access point frequently, you can add their information to the profile. Just like the telephone directory, the profile saves all information of access points, and you can recall them anytime you wish to establish connection.

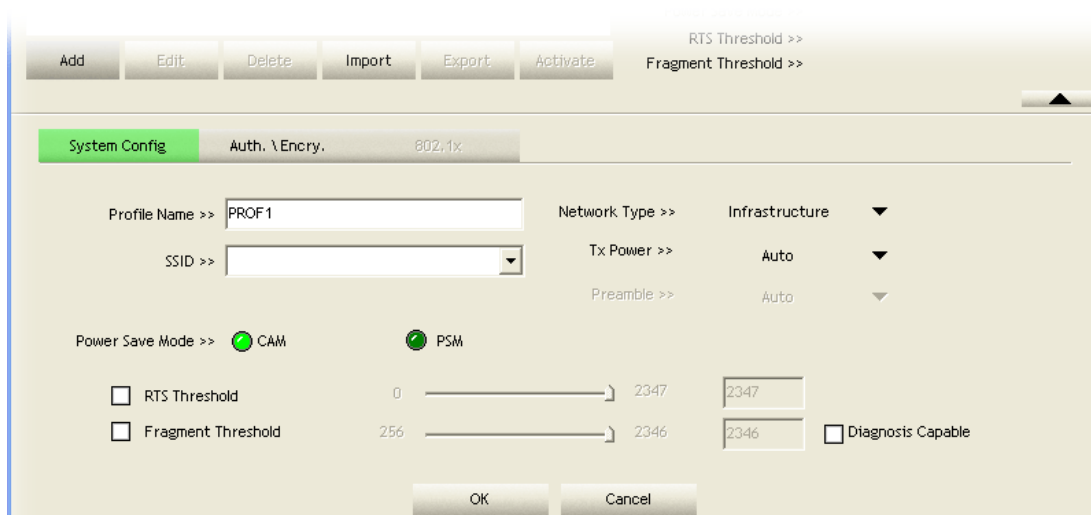
You can add a found access point to profile, or input all information of an access point by yourself.

To add a found access point to profile, please select a found access point first (to make it highlighted), then click **Add to Profile** button; to input the information of access point by yourself, please go to **Profile** menu and click **Add** button.





The setup utility will expand:

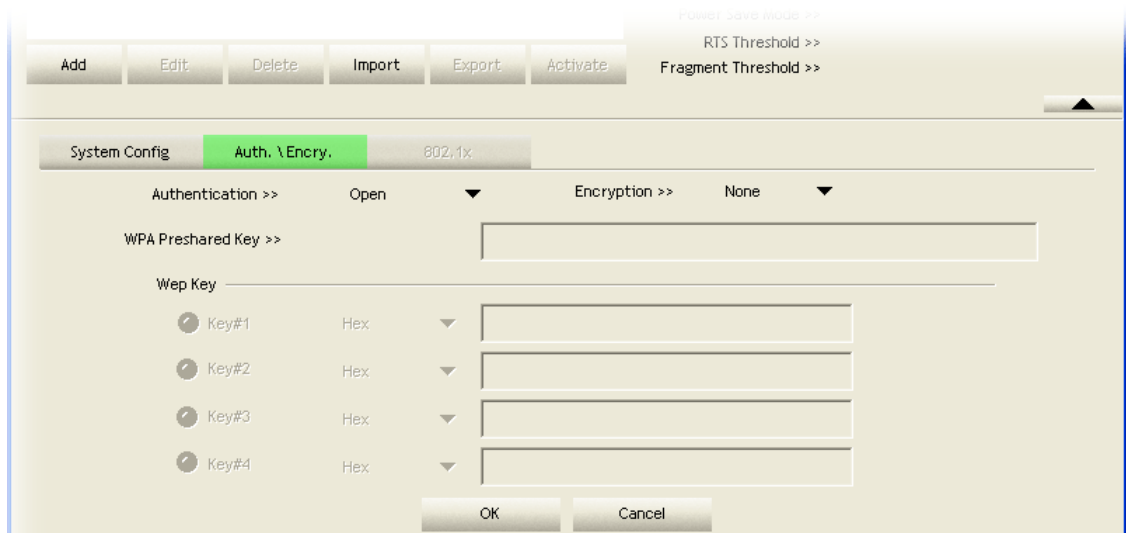


Here are descriptions of **System Config** tab:

Item Name	Description
Profile Name	You can give this profile a name. Every profile needs a unique name.
SSID	Please input the SSID of this access point. If you selected an access point from the list, and its SSID is not hidden, the SSID will be filled automatically; however, you can modify the SSID by yourself.
Network Type	Please select the network type: Ad hoc or Infrastructure. If you're connecting to an access point, please select Infrastructure ; for point-to-point wireless connection (i.e. connecting to another computer using Ad Hoc mode), please select Ad hoc here. If you selected an access point from the list above, please keep this field unchanged.
Tx Power	You can select the wireless output power here. If you're not too far from access point (good signal reception), you can select a lower output power to save energy; for a distant access point, you can select a higher output power. It's suggested to select Auto to let setup utility decide the best


	output power for you.
Preamble	Select the preamble for Ad hoc mode here. Available options are Auto and Long . It's suggested to select Auto to let setup utility decide the preamble for you.
Channel	You can select the radio channel number for AdHoc mode here.
Power Save Mode	Please select CAM (constantly awake mode, keep wireless radio activity even when not transferring data), or PSM (Power saving mode, switches radio off when not transferring data). It's recommended to choose PSM if you're using this network card with notebook computer to help the battery live longer.
RTS Threshold	Check this box to set the RTS threshold by yourself. You can drag the slider to set the threshold value, or input the value in the box located at right. It's recommended to keep this value untouched unless you know the effect of changing this value. It's recommended to keep this value untouched unless you know the effect of changing this value.
Fragment Threshold	Check this box to set the packet fragment threshold by yourself. You can drag the slider to set the threshold value, or input the value in the box located at right. It's recommended to keep this value untouched unless you know the effect of changing this value.

To set **authentication / encryption** information for the access point. Please click **Auth. \ Encry.** tab:

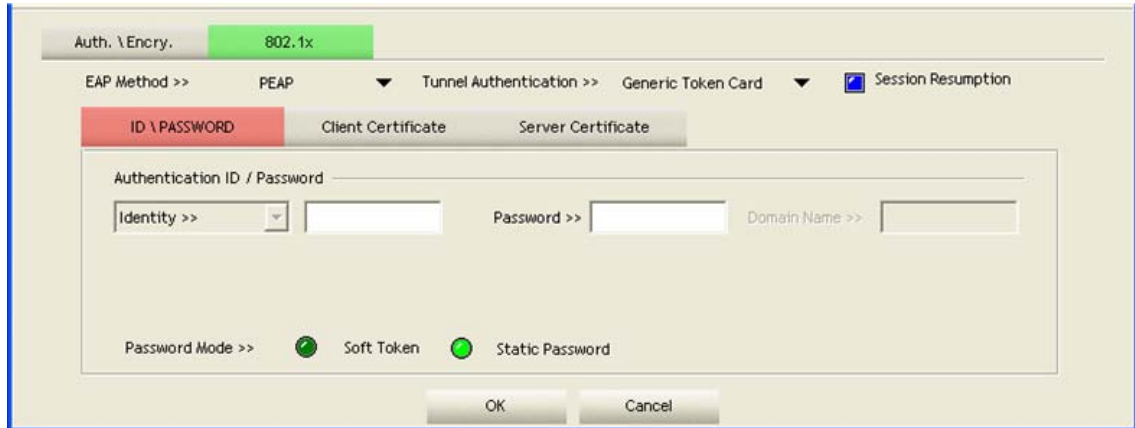


Here are descriptions of every setup item:

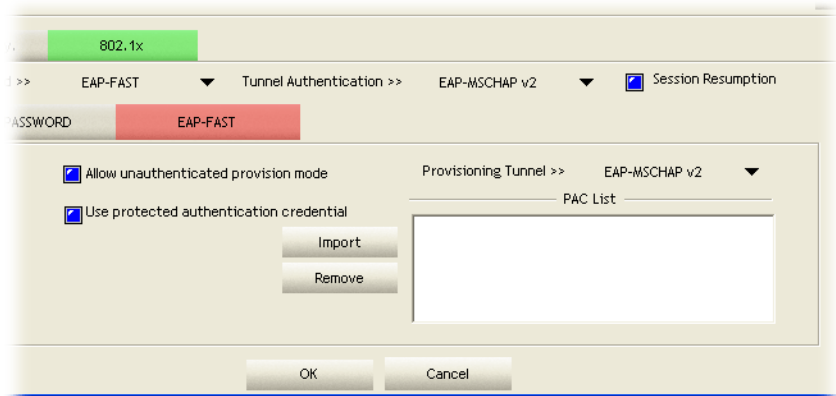
Item Name	Description
Authentication	Select the authentication type of the wireless access point or wireless device you wish to connect. When you're adding a profile from an existing access point or wireless device, authentication type will be selected automatically, and please do not change it.

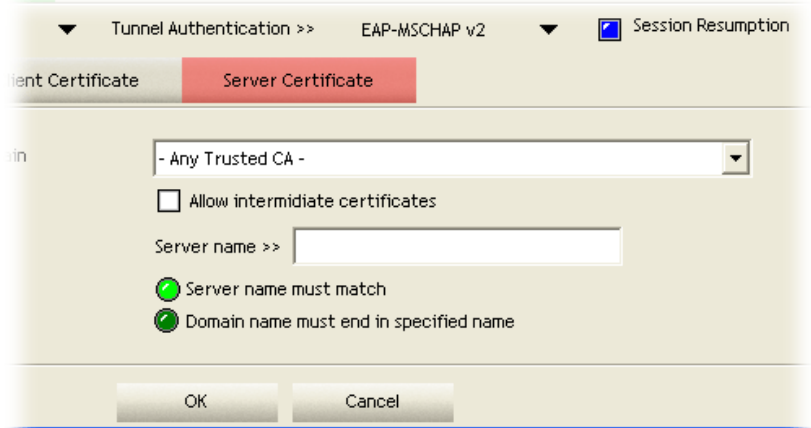
	<p>If you select LEAP, you'll be prompted to input LEAD specific settings:</p>  <p>Please input LEAP identity, password, domain name, and select encryption type. You can check Show Password box so the password you inputted will be displayed as you type, but not replace by asterisk.</p>
Encryption	<p>Select the encryption type of the wireless access point or wireless device you wish to connect. When you're adding a profile from an existing access point or wireless device, the encryption type will be selected automatically, and please do not modify it.</p>
WPA Preshared Key	<p>Input WPA preshared key here. If encryption is not enabled, or you select WEP as encryption type, this field will be disabled and grayed out.</p>
WEP Key	<p>You can select key type (Hexadecimal or ASCII) and input WEP key here. If encryption is not enabled, or you select WPA as encryption type, this field will be disabled and grayed out. You can set up to 4 WEP keys here.</p> <p>There are two types of WEP key: Hexadecimal and ASCII. For Hexadecimal key, you can input number 0-9 and alphabet a-f; for example, 001122aabbcc; For ASCII key, you can input number 0-9 and alphabet a-z; for example, <i>mywepkey12345</i>.</p> <p>The length of WEP key depends on the type of WEP key you selected. You can input 10 or 26 hexadecimal characters and 5 or 13 ASCII characters as WEP key.</p>
Show Password	<p>Check this box and all passphrases or security keys you inputted will be displayed as you type, but not replace your input with asterisk.</p>
Use 802.1x	<p>If the access point you wish to connect requires 802.1x authentication, please click on Use 802.1x box, then click 802.1X tab to set 802.1x parameters.</p> <p><i>Note: Such check box will not be shown if the wireless AP you want to connect does not invoke such feature.</i></p>

To set 802.1x authentication for the access point, please click **802.1X** tab:



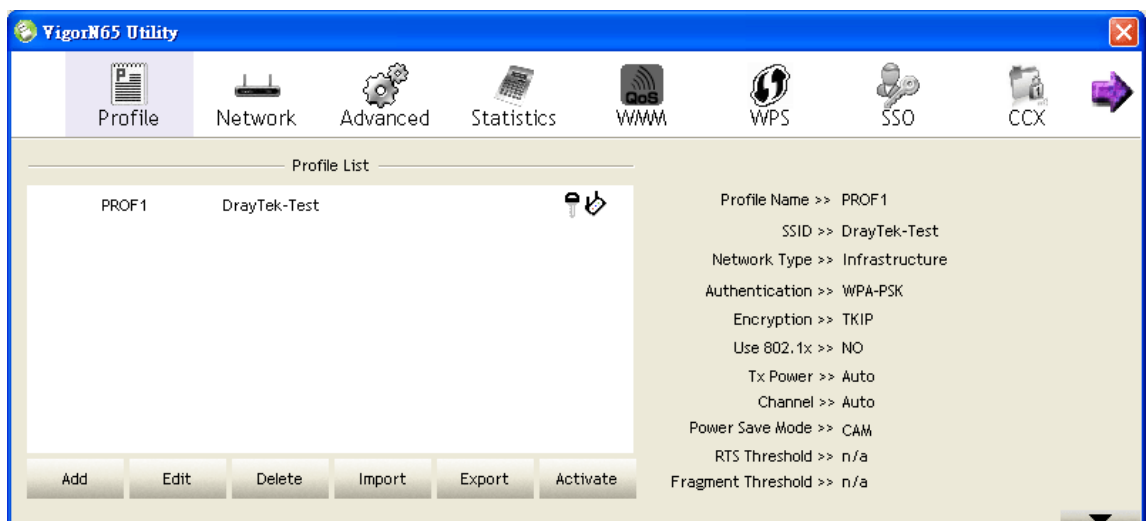
Here are descriptions of every setup item:

Item Name	Description
EAP Method	Select 802.1x EAP method from dropdown menu. Please ask the administrator of the access point you wish to connect to select a correct EAP method.
Tunnel Authentication	<p>Select 802.1x tunnel authentication type from dropdown menu. Please ask the administrator of the access point you wish to connect to select a correct tunnel authentication method. This pull down menu is only available when authentication type you use is PEAP, TLS / Smart Card, or TTLS.</p> <p>When you use EAP-FAST as authentication type, the tunnel authentication type is always Generic Token Card and can not be changed. You also need to select Soft Token or Static Password as password in Authentication ID \ Password setting.</p> <p>EAP-FAST authentication type also have a sub-menu to set EAP fast-specific parameters:</p>  <p>If you need to use protected authentication credential, check Use protected authentication credential box, and click Import to load .pac credential file; to remove a loaded credential file, click Remove.</p>
Session Resumption	You can enable or disable session resumption here. If you don't know if you should enable session resumption or not, please ask your 802.1x authentication administrator.

ID \ Password tab	Input 802.1x username (ID) and password and other information if it is required here. Click Show Password to show the password you typed.
Client Certification tab	Use this tab to select a local certificate from dropdown menu. If the access point you wish to connect required a specific client certificate, the certificate must be installed on your computer, and you can select the certificate here.
Server Certification tab	<p>Use this tab to use server-based certification. Please select a CA (Certificate Authority) from dropdown menu. If intermediate certificates are allowed, please select Allow intermediate certificates. Also, if you need to specify CA server's name, you can specify it in Server name field. You can select Server name must match, so the CA server's name must be the same with the value you set in Server name field; If only the domain name part of full server name must the same with the value you set in Server name field, select Domain name must end in specified name.</p> 

After you complete all information related to the access point, click **OK** to save the profile, or click **cancel** to cancel adding a new profile.

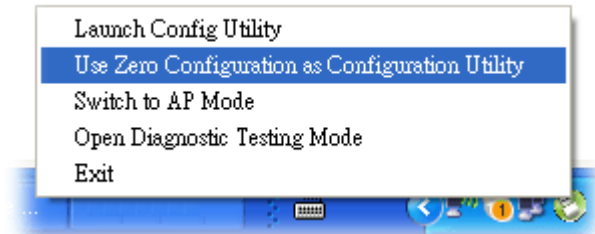
If the profile is created, you will see the information in the Profile List.



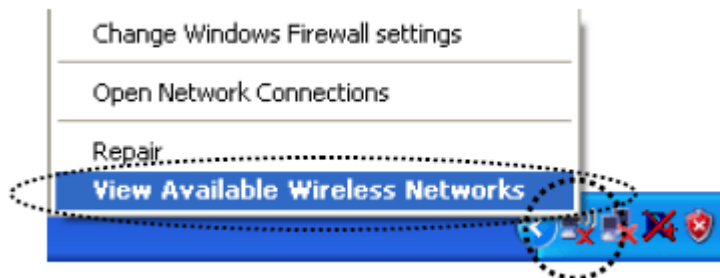
3.1.2 Using Windows Zero Configuration

Windows XP and Vista has a built-in wireless network configuration utility, called as **Windows Zero Configuration (WZC)**. You can also use WZC to configure your wireless network parameter:

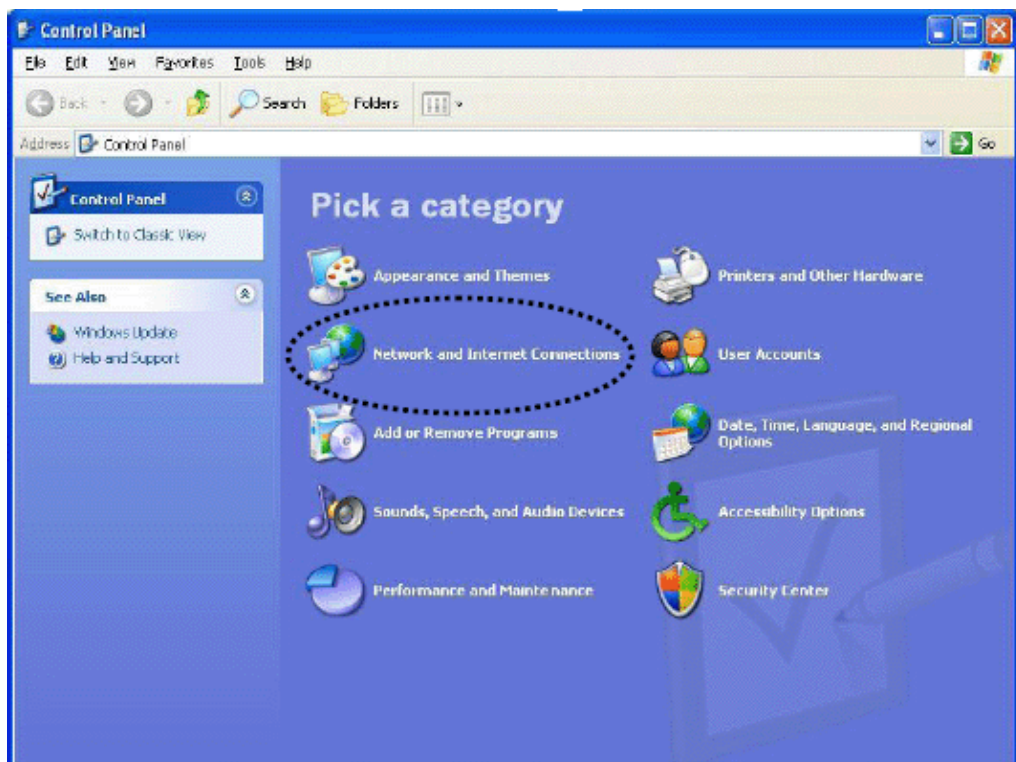
1. Right click VigorN65 configuration utility icon and select **Use Zero Configuration**.



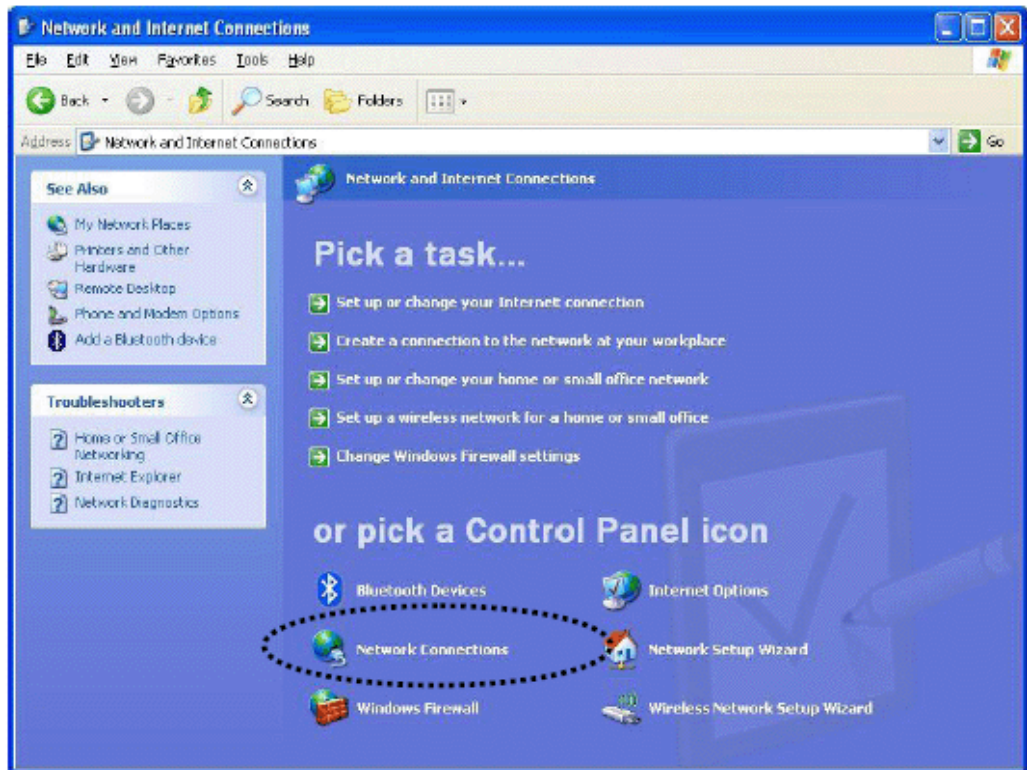
2. Right click Windows Zero Configuration icon and select **View Available Wireless Networks**. If you can not find the icon, please follow the procedures from step 3 to step 5.



3. Click **Start** button (should be located at the bottom-left corner of windows desktop), click **Control Panel**, then click **Network and Internet Connections** in Control Panel.



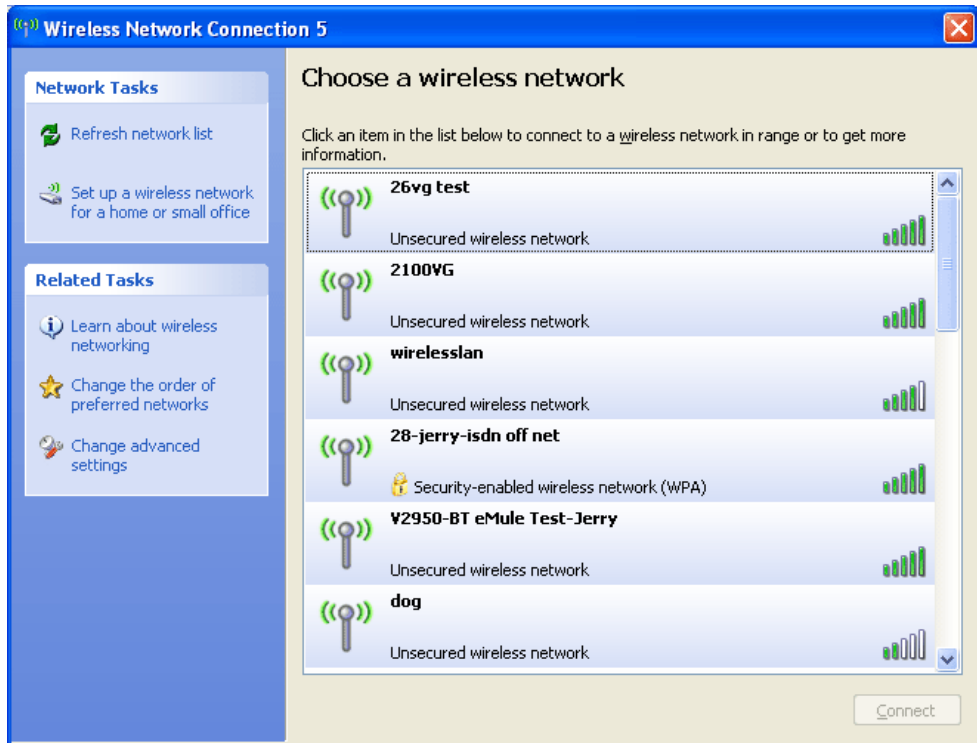
4. Click **Network Connections**.



5. Right-click **Wireless Network Connection** (it may have a number as suffix if you have more than one wireless network card, please make sure you right-click the ViogrN65 Wireless LAN Card), then select **View Available Wireless Networks**.



6. All wireless access points in proximity will be displayed here. If the access point you want to use is not displayed here, please try to move your computer closer to the access point, or you can click **Refresh network list** to rescan access points. Click the access point you want to use if it is shown, then click **Connect**.

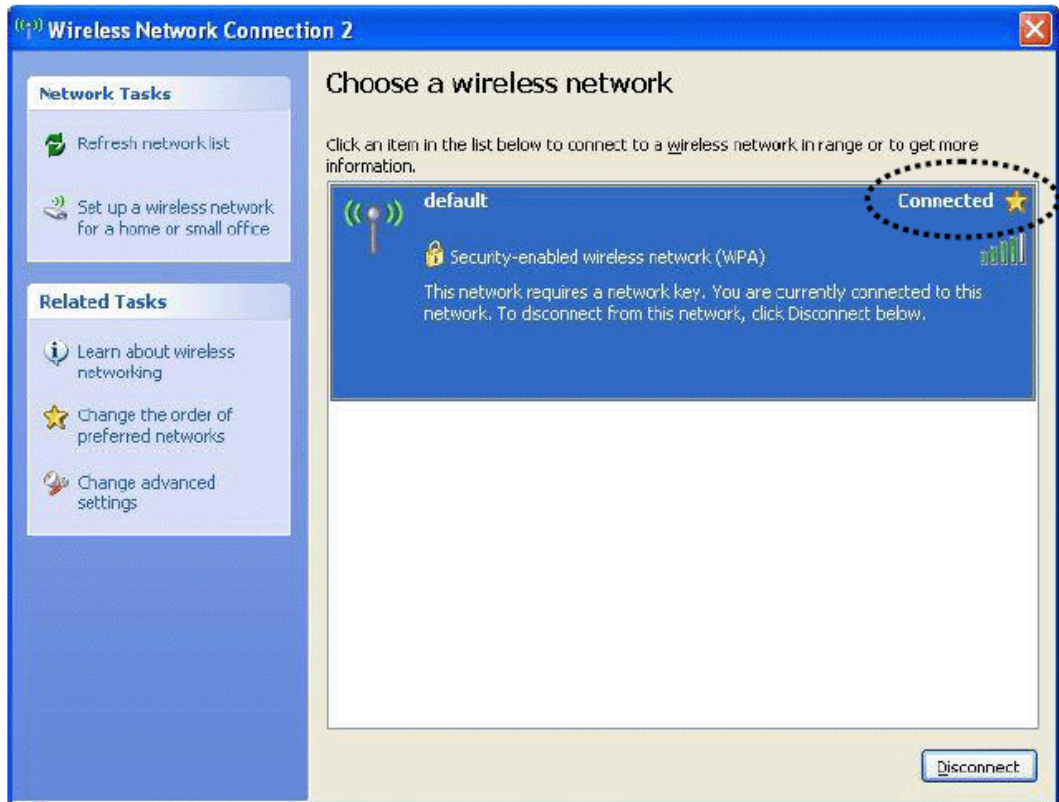


7. If the access point is protected by encryption, you have to input its security key or passphrase here. It must match the encryption setting on the access point.

If the access point you selected does not use encryption, you'll not be prompted for security key or passphrase.

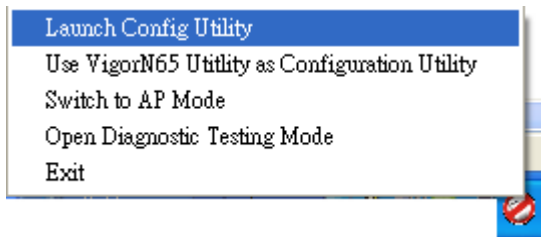


8. If you can see **Connected** message, the connection between your computer and wireless access point is successfully established.

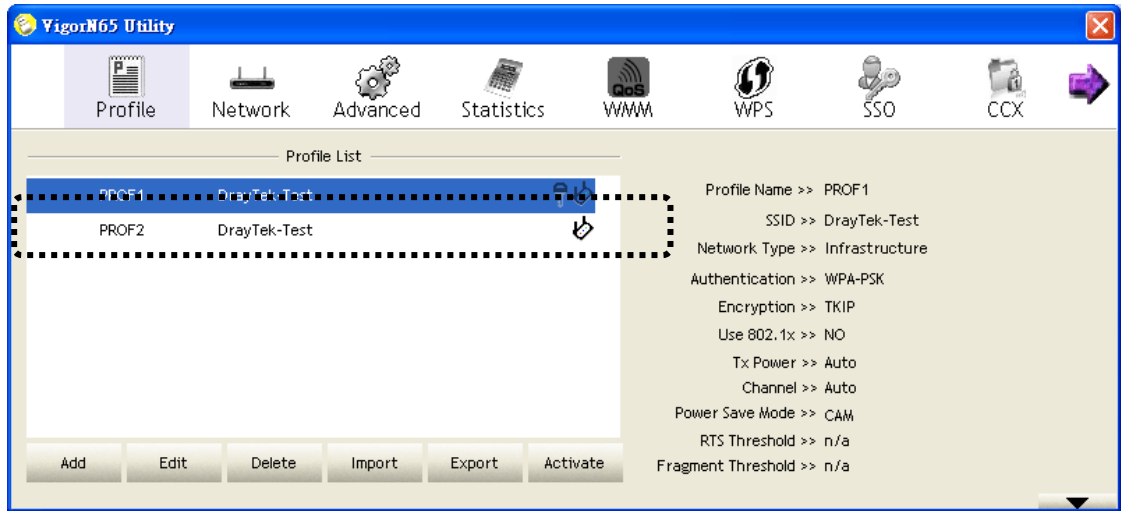


3.2 Profile Management

If you need to connect to different wireless access points at different time, like of access point of your home, office, cybercafé, or public wireless service, you can store the connection parameters (encryption, passphrase, security etc, etc.) as a profile for every access point, so you don't have to input these parameters every time when you want to connect to a specific wireless access point. To manage profiles, right-click VigorN65 configuration utility icon located at lower-right corner of computer desktop, then click **Launch Config Utility**.

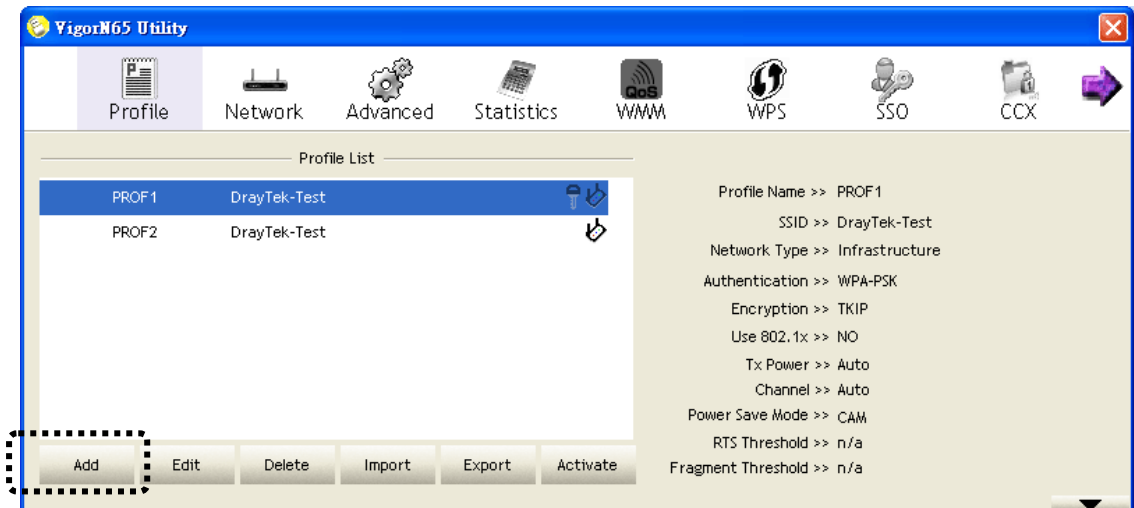


Click the **Profile** menu. All profiles will be listed in **Profile List**, and you can select a profile from the list, all information about selected profile will be listed.



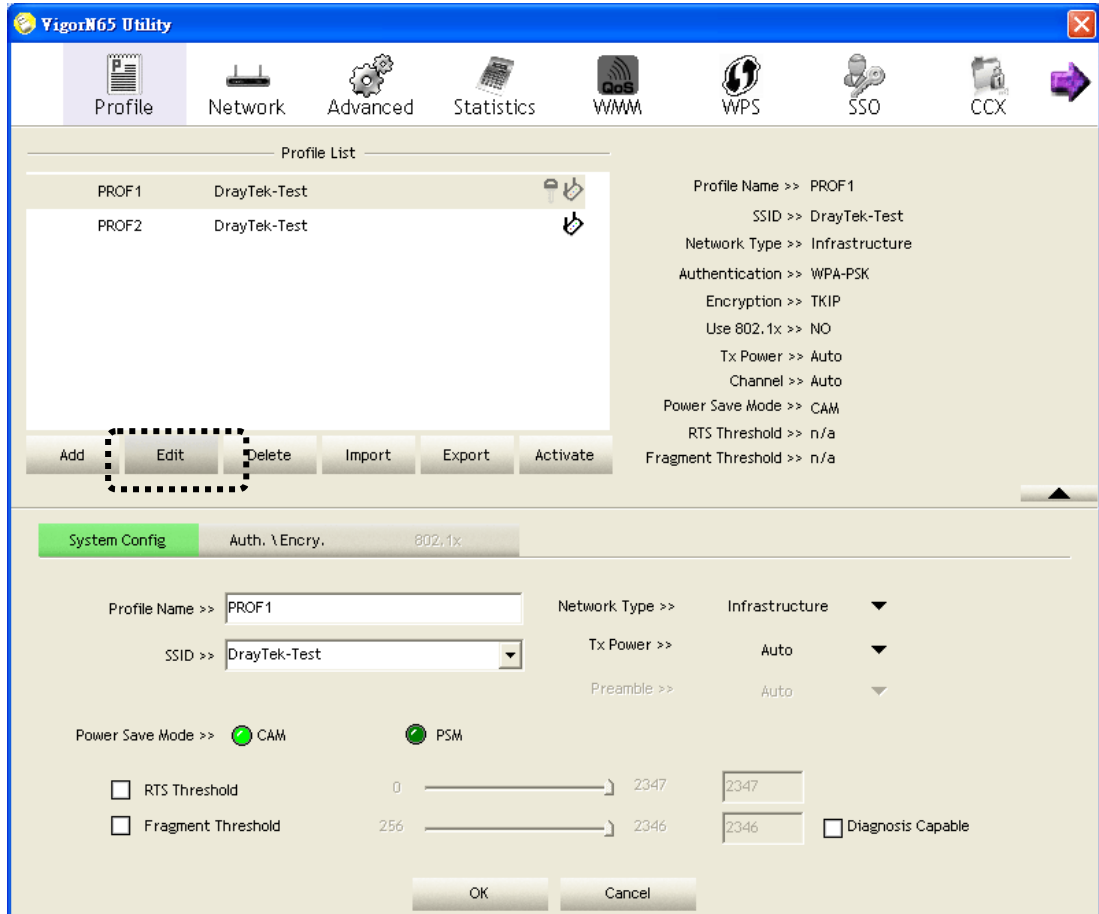
3.2.1 Add a profile

If you want to click new profile, click **Profile** menu, then click **Add** button. You'll be prompted to input detailed information of access point, as described in Section 3.1.1.3.



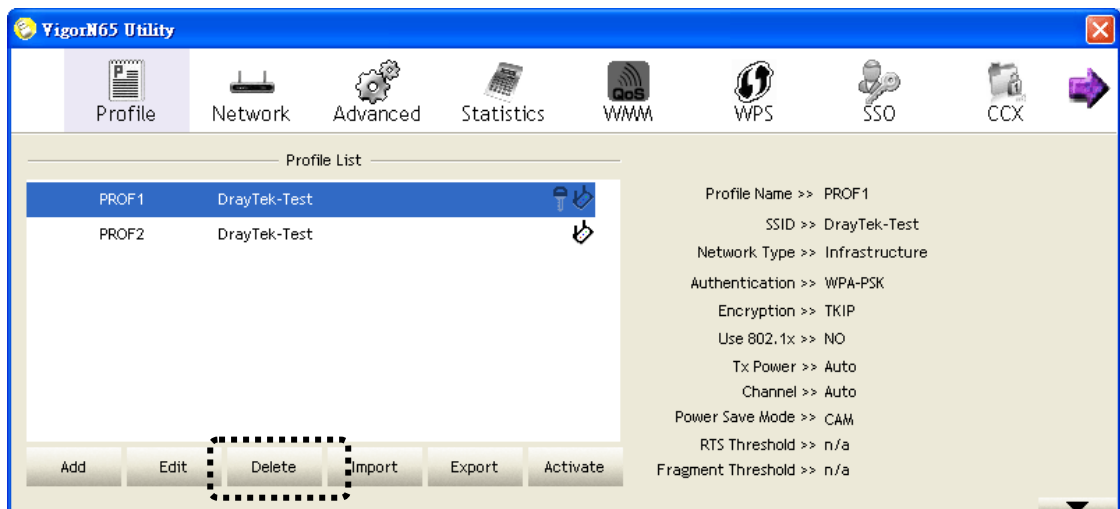
3.2.2 Edit an existing profile

If you have added a profile before, and you wish to change the content of the profile, you can use this function. Please select a profile from the list first, then click **Edit** button. You'll be provided with the contents of selected profile, and you can edit them. Click **OK** to save changes, or click **Cancel** to discard changes.



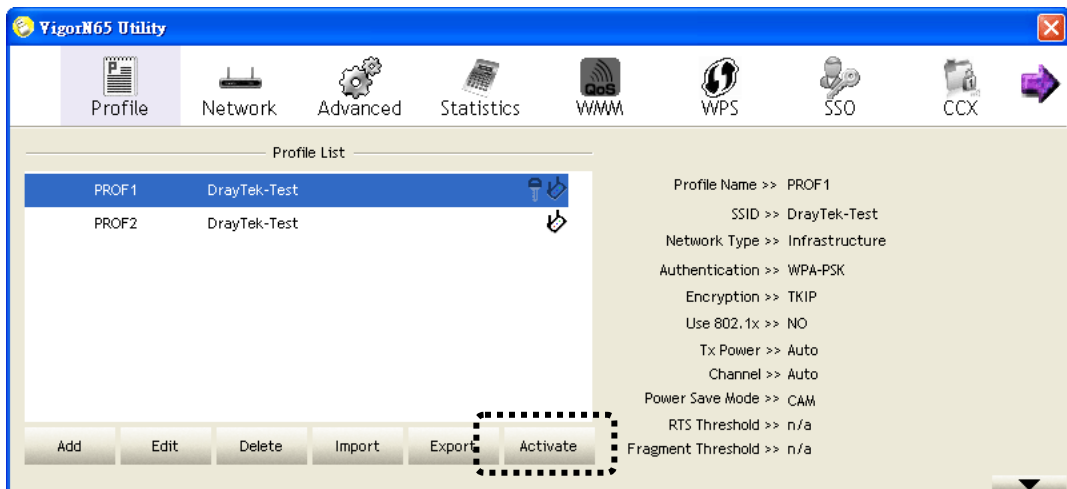
3.2.3 Delete an existing profile

If you no longer need a profile, you can delete it. Select the profile you wish to delete from the list, and click **Delete** button to delete it.



3.2.4 Activate a profile

When you want to connect to a specific wireless device in the profile list, you can select it and click **Activate** button, to establish connection with it.



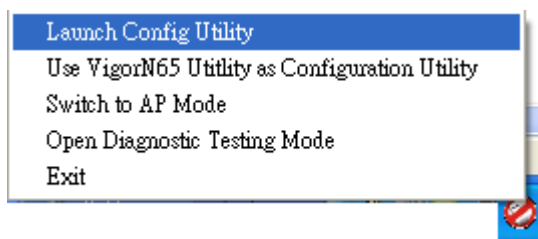
When you selected a profile and click **Activate** button to activate the profile, a play icon will be displayed in front of the profile to show that the connection is failed; When the connection is successfully established, a icon will be displayed.

3.3 Advanced Settings

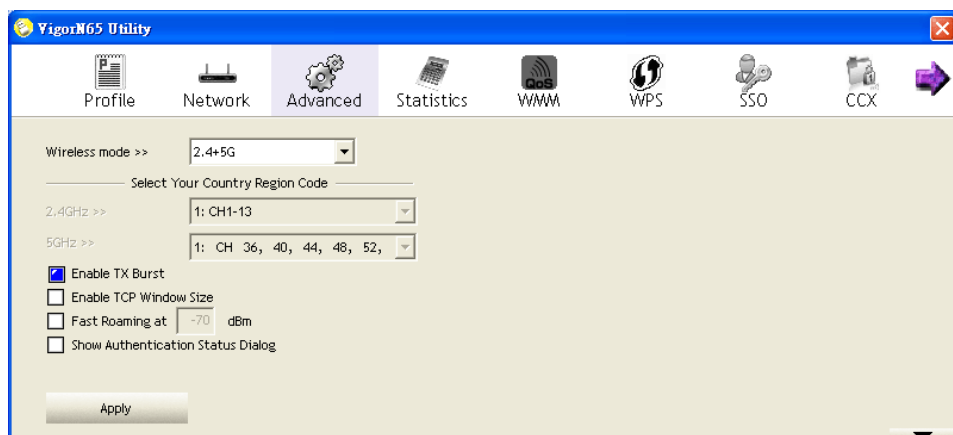
This wireless network card provides several advanced settings for experienced wireless users. You can change these settings to increase data transfer performance, or change operation mode.

Please follow the following instructions to set advanced wireless settings:

1. Right-click VigorN65 configuration utility icon located at lower-right corner of computer desktop and then click **Launch Config Utility**.



2. Click **Advanced** menu, and the following settings will appear:



Here are descriptions of every setup item:

Item Name	Description
Wireless mode	Select the wireless operation mode of the network card. When 2.4GHz is selected, the network card can be operated in 802.11b/g/n wireless networks. When 5GHz is selected, the network card can be operated in 802.11a/n wireless networks. When 2.4GHz + 5GHz is selected, the wireless network card can be operated in 802.11a/b/g/n wireless networks.
Select Your Country Region Code	The available channels of the network card are differed from countries. It is restricted to change. Here you can see the 11B/G and 11A channel settings of your card.
Enable Tx Burst	Check this box to accelerate the data transmit rate. It may not work with all wireless access point and wireless devices.
Enable TCP Window Size	Check this box and the configuration utility will adjust TCP window size automatically to get better performance. It should be safe for most of wireless environments, but if you found some problem on data transfer, uncheck this box.
Fast Roaming	Check this box and you can control the threshold that the wireless network card should switch to another wireless access point with better signal quality. Only adjust value when you understand what it means and you need to roam between multiple access points.
Show Authentication Status Dialog	When your computer is being authenticated by wireless authentication server, a dialog window with the process of authentication will appear. This function is helpful to find out the problem when you can not be authenticated, and you can provide this information to authentication server's administrator for debugging purpose.

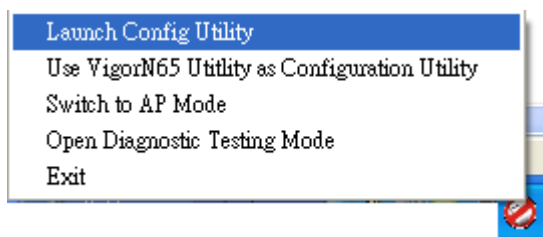
After you finish the settings, click **Apply** to apply new settings.

3.4 View Network Statistics

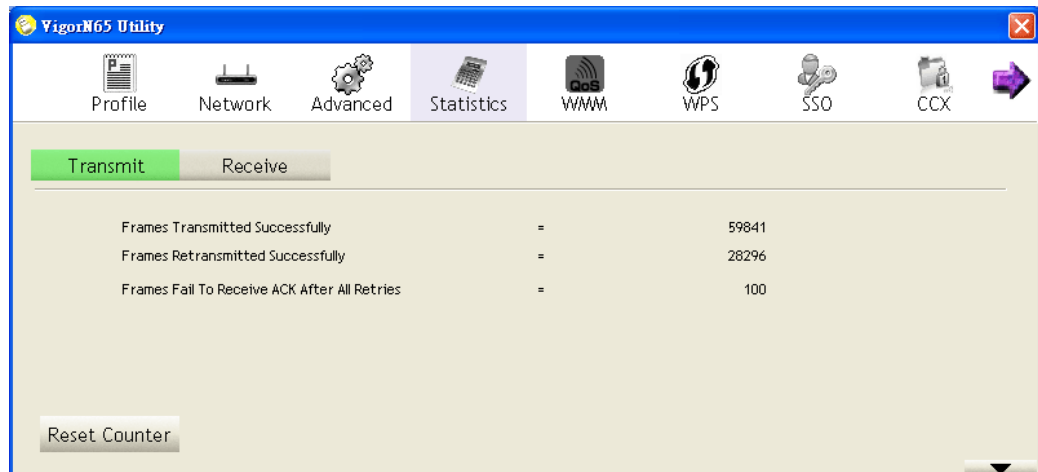
The configuration utility provides information about network statistics and link status. If you want to know how your wireless network card works, you can use these functions to get detailed information about the wireless connection you're using.

Please follow the following instructions to check network statistics:

1. Right-click VigorN65 configuration utility icon located at lower-right corner of computer desktop and then click **Launch Config Utility**.



- Click **Statistics** menu and the statistics of wireless connection will be displayed:



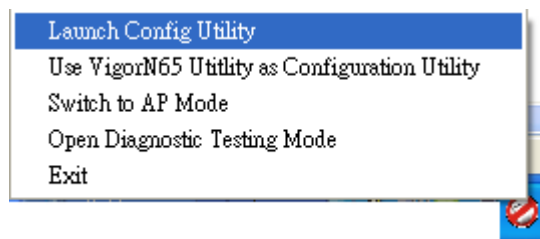
All connection-related statistics is displayed here. You can click **Transmit** or **Receive** tab, to view the statistics of transmitted or received packets. You can also click **Reset Counter** button, to reset the statistics of all items back to 0.

3.5 WMM Setting

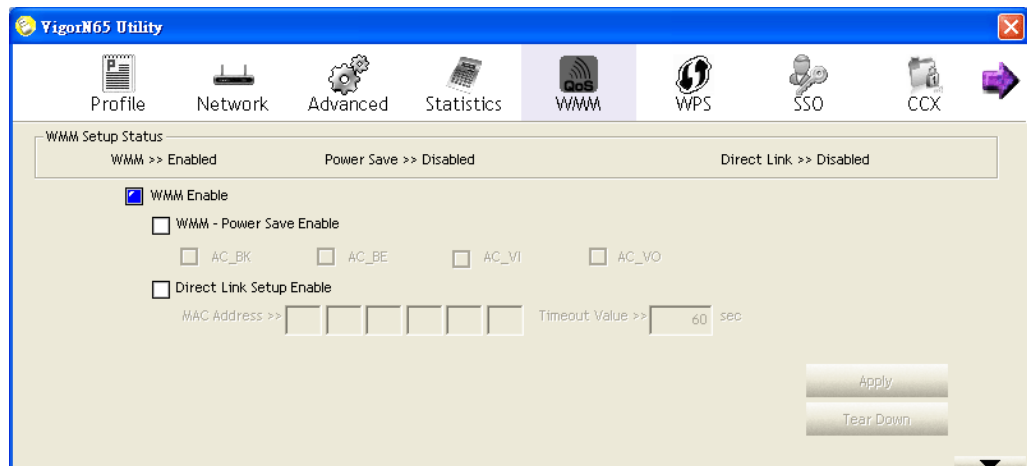
This wireless network card provides WMM (Wi-Fi Multimedia) function, which can improve the performance of certain network applications, like audio/video streaming, network telephony (VoIP), and others. When you enable the WMM function of this network card, you can define the priority of different kinds of data, to give higher priority to applications which require instant responding. Therefore you can improve the performance of such network applications.

Please follow the following instructions to set WMM wireless settings:

- Right-click VigorN65 configuration utility icon located at lower-right corner of computer desktop and then click **Launch Config Utility**.



- Click **WMM** menu and the following settings will appear:



In **WMM Setup Status** block, current WMM settings will be displayed. And here are descriptions of every setup item:

Item Name	Description
WMM Enable	Check this box to enable WMM function. Please click „Apply“ button on the right of this check box after you check or uncheck this box, so corresponding settings in this window will be activated or deactivated respectively.
WMM - Power Save Enable	Check this box to enable WMM power saving mode to save energy, and let your computer’s battery live longer. You also have to select WMM power save modes here: AC_BE: Best Performance AC_BK: Worst Performance AC_VI: Video data has priority AC_VO: Voice data has priority.
Direct Link Setup Enable	If you have another WMM-enabled wireless device, you can enter its MAC address here, then click Apply button, and this network card will establish a direct link to the wireless device you specified here. You also have to specify the timeout value of this directly-linked wireless device. Valid values are from 1 to 65535 (seconds), and input 0 for infinity. If you want to remove a specific wireless device from direct link table, select the device and click this button to remove it.

3.6 WPS Configuration

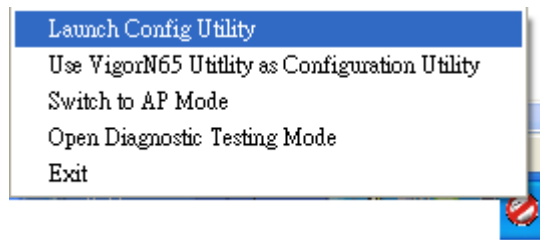
Wi-Fi Protected Setup (WPS) is the latest wireless network technology which makes wireless network setup become very simple. If you have WPS-enabled wireless access point, and you want to establish a secure connection to it, you don’t have to configure the wireless access point and setup data encryption by yourself. All you have to do is to go to the WPS setup page of this wireless card, click a button, and then press a specific button or enter a set of 8-digit code on the wireless access point you wish to establish a secure connection - just three simple steps!

For older wireless access points, it’s possible to perform a firmware upgrade to become a WPS-enabled access point. Since they may not have a hardware button to press for WPS setup, you can use an alternative WPS setup method - input the pin code. Every WPS-compatible wireless network card support pin code configuration method; you can just input the code to wireless access point, and the wireless access point and wireless network card will do the rest for you.

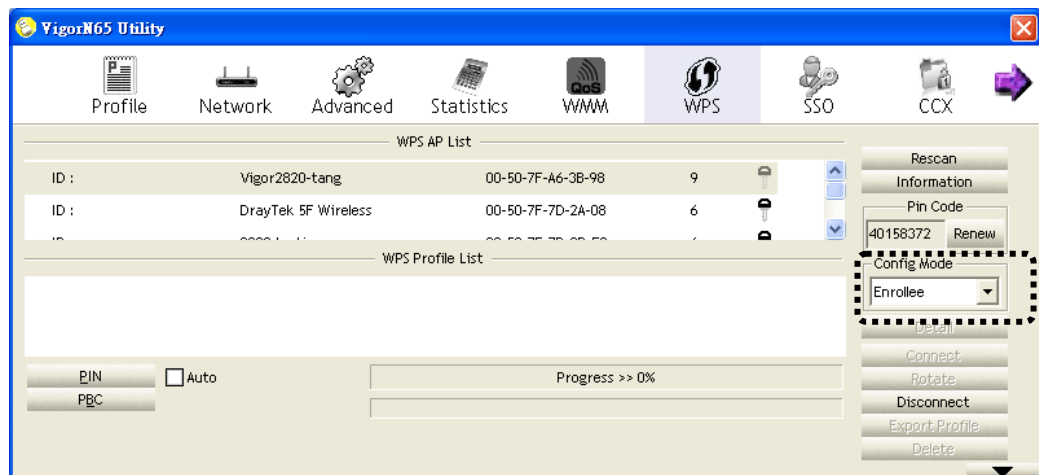
This wireless network card is compatible with WPS. To use this function, the wireless access point you wish to connect to must support WPS function too. Now, please follow the following instructions to establish secure connection between WPS-enabled wireless access point and your wireless network card.

3.6.1 WPS Setup - PBC (Push-Button Configuration)

1. Right-click VigorN65 configuration utility icon located at lower-right corner of computer desktop and then click **Launch Config Utility**.



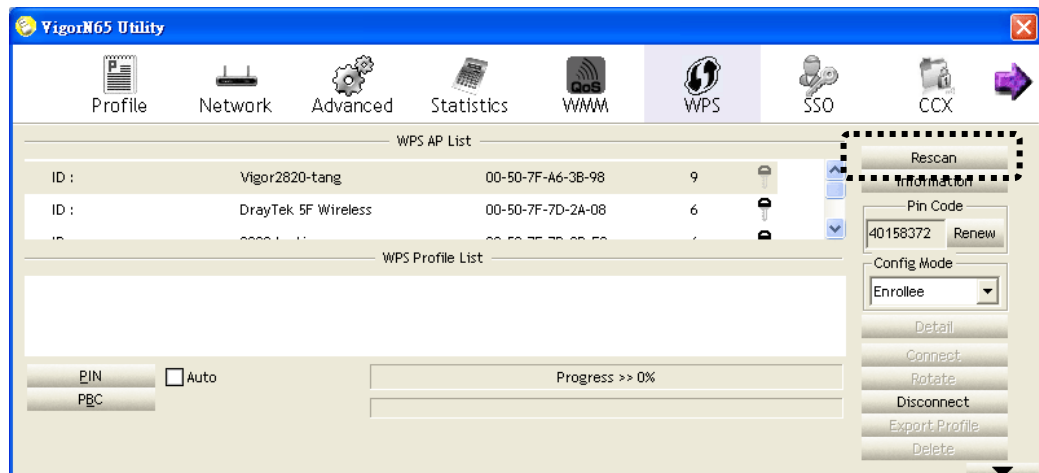
2. Click **WPS** menu, and the following settings will appear.



3. Set **Config Mode** to **Enrollee**, and then push the **WPS** button on your wireless access point (the button used to activate WPS standby mode may have another name), or use other way to start WPS PBC standby mode as the instruction given by your wireless access point's user manual.

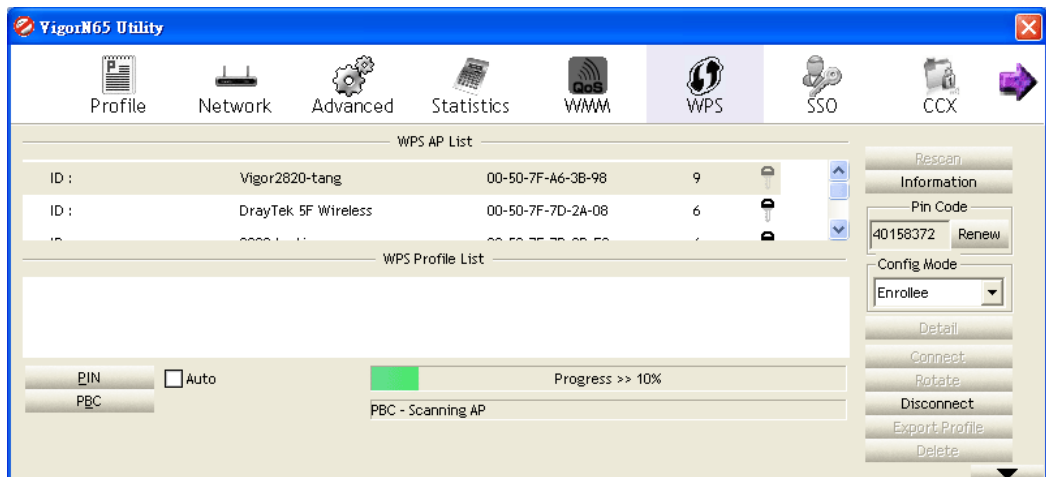
You can also set **Config Mode** to **Registrar**. In this mode, this wireless network card will wait for other WPS-enabled access points to send WPS pairing requests. Please refer to the instruction given by your wireless access point's user manual to understand how to send WPS requests.

4. Before you start to establish the wireless connection by using WPS, you can click **Rescan** button to search for WPS-enabled access points near you again, to make sure the WPS function of your access point is activated.



All access points with WPS function enabled will be displayed here. Please make sure the access point you wish to connect is displayed. If not, please click **Rescan** few more times. You can also click **Information** button to see the detailed information about selected access point.

5. Start PBC pairing procedure at access point side (please refer to the instruction given by your access point's manufacturer), then click **PBC** button in wireless configuration utility to start to establish wireless connection by WPS. Please be patient (This may require several seconds to one minute to complete). When you see **WPS status is connected successfully** message, means the connection between this wireless network card and access point is successfully established by WPS, and the information about access point you connected to will be displayed.
6. You can click **Detail** button to see detailed information of connected access point. If you wish to save this connection as a profile, you can click **Export Profile** button, and this connection will be saved. You can find this connection in **Profile** tab in a later time.
7. Sometime WPS may fail (In the following picture, WPS pairing is failed because no WPS-enabled access point is found):



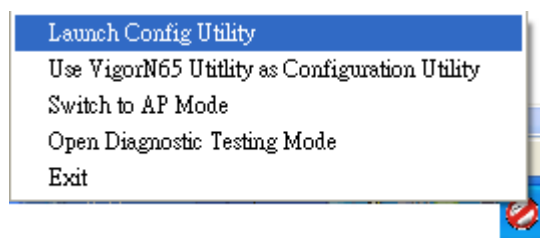
You can click **PBC** button few more times to try again. When an access point is connected, you can click **Disconnect** to disconnect your wireless network card from a connected access point, or select another WPS-enabled wireless access point, then click **Connect** to establish connection to selected access point, if there are more than one WPS-enabled access point found. You can also click **Rotate** button, and next access point on the list will be selected to establish connection.

If you want to delete a found access point from the list, select it and click **Delete** button.

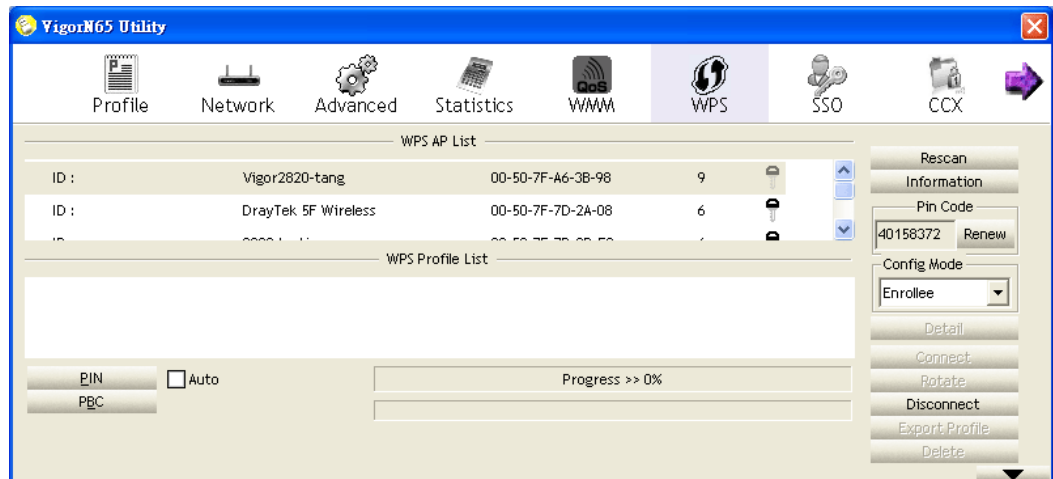
3.6.2 WPS Setup - PIN

If the wireless access point you wish to connect supports PIN, please follow the following instructions to establish connection to it:

1. Right-click VigorN65 configuration utility icon located at lower-right corner of computer desktop and then click **Launch Config Utility**.



- Click **WPS Configuration** menu, and the following settings will appear.

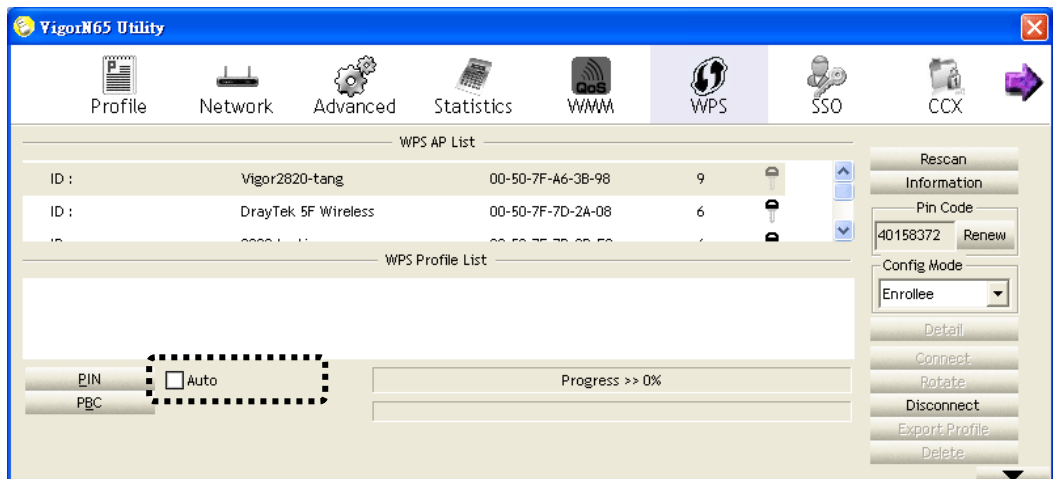


- The PIN code of your wireless network card is an eight-digit number located at the upper-right position of configuration utility. Remember it, and input the number to your wireless access point as the WPS PIN code (Please refer to the user manual of your wireless access point for instructions about how to do this).

NOTE: If you experienced problem with the pin code provided here, you can click **Renew** to get a new pin code.

- Click **PIN** button now, and wait for few seconds to one minute. If a wireless access point with correct PIN code is found, you'll be connected to that access point.
- You may have to click **PIN** for few more times to try again. If you still can not connect to access point by this way, please make sure the PIN code you provided to access point is correct.

There are also some options available for WPS configuration:

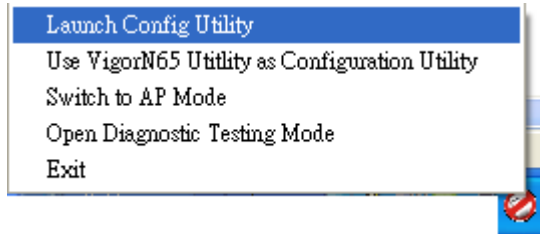


Auto: When in PIN mode, wireless access point to be connected will be selected automatically if this box is checked.

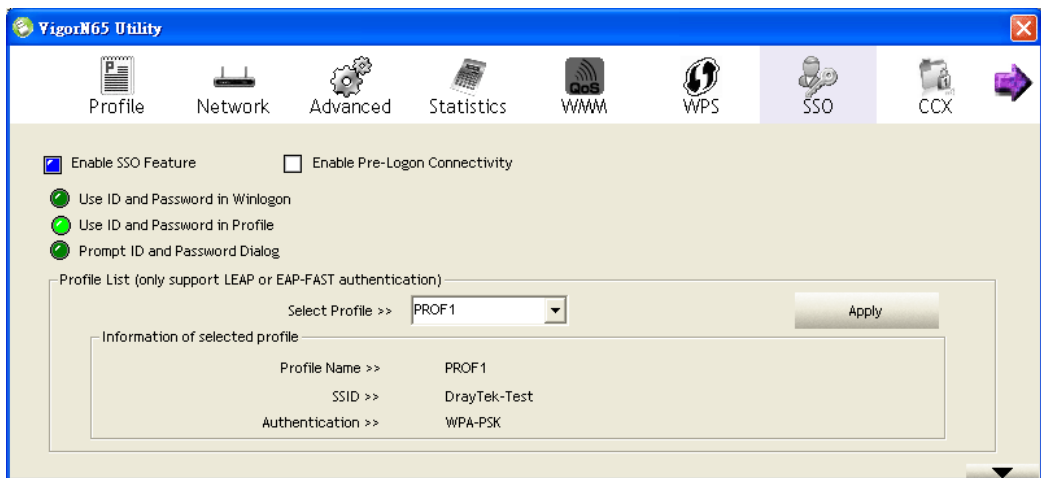
3.7 SSO

SSO stands for Single Sign-on. Please follow the following instructions to configure the settings for SSO.

1. Right-click VigorN65 configuration utility icon located at lower-right corner of computer desktop and then click **Launch Config Utility**.



2. Click **SSO** menu, and the following settings will appear.



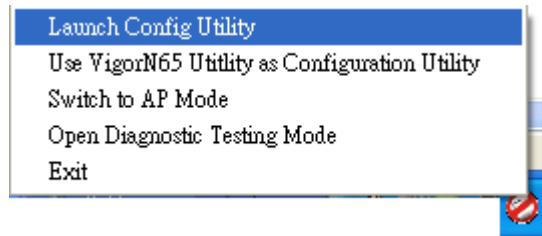
Here are descriptions of every setup item:

Item Name	Description
Enable SSO Feature	Click it to enable SSO feature. You have to choose one of the SSO methods to log on.
Enable Pre-Logon Connectivity	Click it to enable pre-logon connectivity.
Use ID and Password in Winlogon	Use the ID and Password in Windows logon.
Use ID and Password in Profile	Use the ID and Password defined in a profile.
Prompt ID and Password Dialog	Use the ID and Password in pop-up authentication dialog.
Profile List	Select Profile: Select a profile containing LEAP or EAP-Fast authentication Information of selected profile: Contain the information listed in the profile such as profile name, SSID, and so on.
Apply	Make the settings effective.

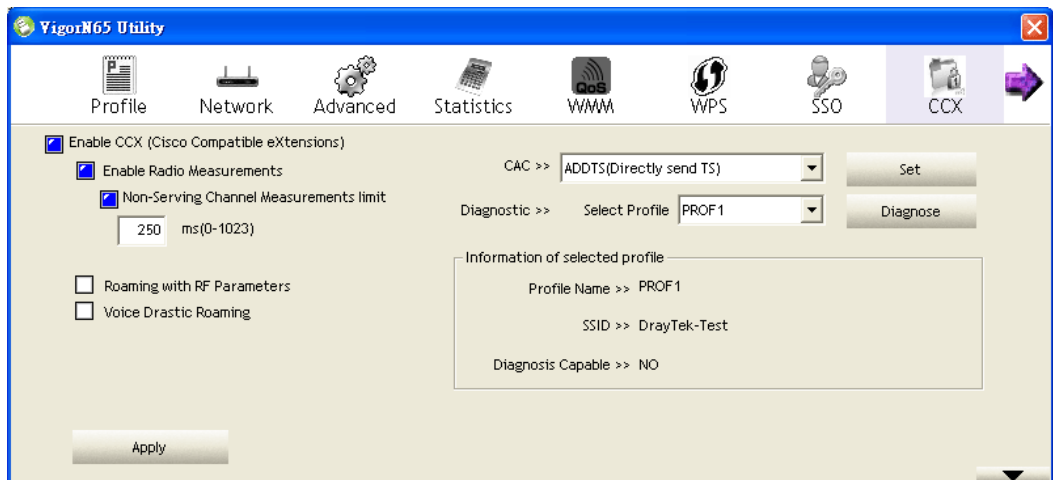
3.8 CCX

CCX stands for Cisco compatible eXtensions. To set relational CCX settings, please follow the following instructions to configure it:

1. Right-click VigorN65 configuration utility icon located at lower-right corner of computer desktop and then click **Launch Config Utility**.



2. Click **CCX** menu, and the following settings will appear.



Here are descriptions of every setup item:

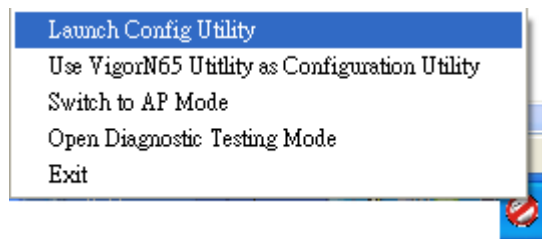
Item Name	Description
Enable CCS	Choose whether Cisco compatible eXtensions are supported or not.
Enable Radio Measurements	Enable the radio measurement.
Non-Serving Channel Measurement limit	Non-serving channel measurement limit is between 0 and 1023 milliseconds.
Roaming with RF Parameters	Check the box to make roaming by a set of RF parameters from AP.
Voice Drastic Roaming	Check the box to diagnose roaming function by voice traffic test
CAC>>	Choose one of the CAC profiles.
Set	Hit the button to enable the call admission control.
Diagnostic >>Select Profile	Select a profile that the user wants to diagnose, then hit the Diagnose button to perform the diagnostic test.

Diagnose	Hit the button to perform the diagnosis.
Information of Selected Profile	Contain the information listed in the profile such as profile name, SSID, capability of diagnosis and so on.
Apply	Make the settings effective.

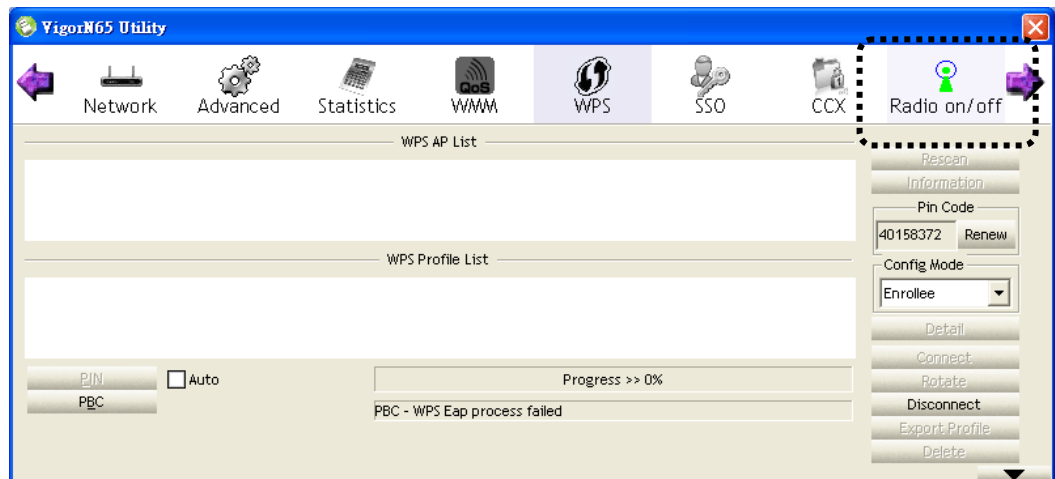
3.9 Radio On/Off

You can switch the wireless radio transceiver on and off by the utility, so if you want to disable wireless network function, you don't have to remove the network card physically.

1. Right-click VigorN65 configuration utility icon located at lower-right corner of computer desktop and then click **Launch Config Utility**.



2. To switch wireless radio on/off, please click **Radio On/Off** button.



Wireless radio is on (Green)



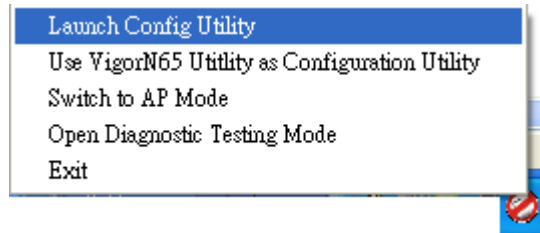
Wireless radio is off (Red)

3.8 About

The **About** tab provides you the information about version number of the configuration utility, driver, and other important information about your wireless network card.

Please follow the following instructions to see the information:

1. Right-click VigorN65 configuration utility icon located at lower-right corner of computer desktop and then click **Launch Config Utility**.



2. Click **About** tab, and the following information will appear.



4

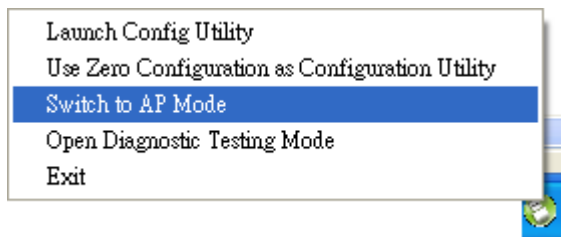
Soft-AP Function

Excepting become a wireless client of other wireless access points, this wireless card can act as a wireless service provider also! You can switch this wireless card's operating mode to **AP** mode to simulate the function of a real wireless access point by software, and all other computers and wireless devices can connect to your computer wirelessly, even share the internet connection you have!

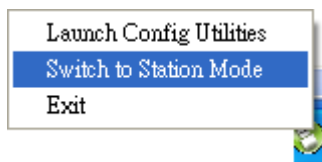
Please follow the instructions in following chapters to use the AP function of your wireless card.

4.1 Switch to AP Mode and Basic Configuration

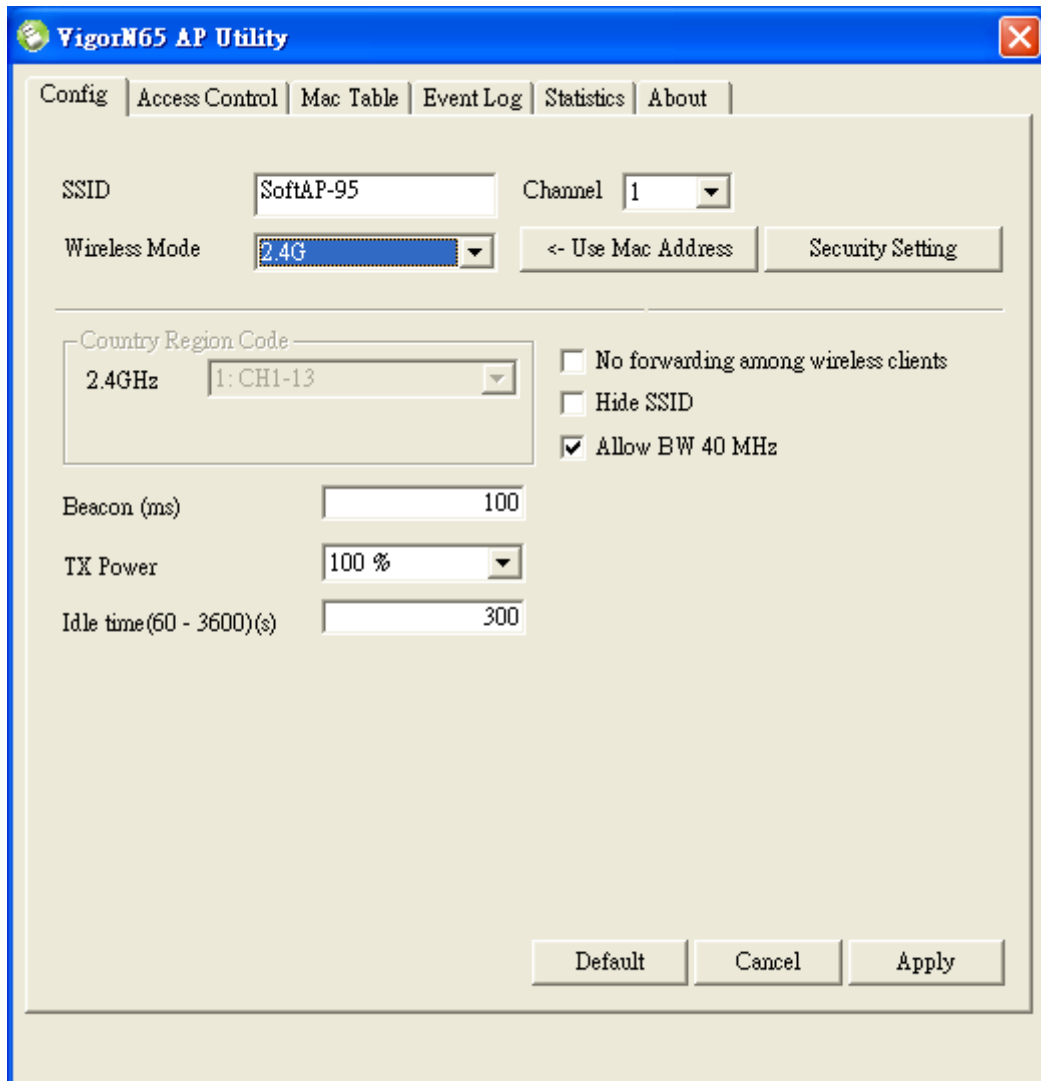
The operating mode of the wireless card is **Station Mode** (becoming a client of other wireless access points) by default. If you want to switch to AP mode, please right-click VigorN65 utility icon, and select **Switch to AP Mode**.



If you want to switch the wireless card back to station mode (become a client of other wireless access points), click **Switch to Station Mode**.



You'll see the basic configuration menu of the AP function.



Here are descriptions of every setup item:

Item Name	Description
SSID	Please input the SSID (the name used to identify this wireless access point) here. Up to 32 numerical characters can be accepted here, excepting space.
Channel	Please select the wireless channel you wish to use. The number of channels available here will vary depends on the setting of Country Region Code .
Wireless Mode	Select the operation mode of the access point here. When 2.4G is selected, the access point is operated as 802.11b/g/n access point. When 5GHz is selected, the access point is operated as 802.11a/n access point.
Use Mac Address	Click this button to use the MAC address of the wireless card as SSID. A prefix AP will be added automatically.
Security Setting	Set the security options (wireless data encryption). Please refer to chapter 4.2 Security Settings for details.

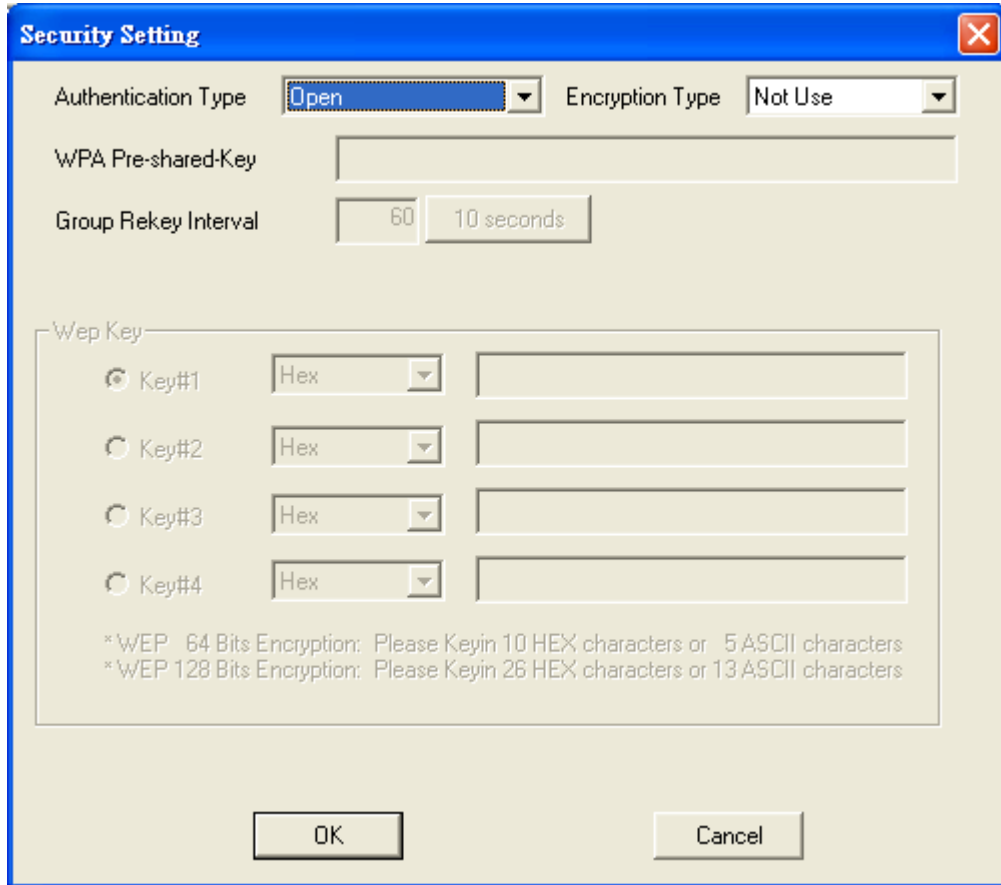
Country Region Code	<p>The available channels are differed from countries. It is restricted to change. Here you can see the channel setting of the access point. For example:</p> <p>0: FCC (US, Canada, and other countries uses FCC radio communication standards)</p> <p>1: ETSI (Europe)</p> <p>2: SPAIN</p> <p>3: FRANCE</p> <p>4: MKK</p> <p>5: MKKI (TELEC)</p> <p>6: ISERAL (Channel 3 to 9)</p> <p>7: ISERAL (Channel 5 to 13)</p>
No forwarding among wireless clients	Check this box and wireless clients will not be able to share data with each other.
Hide SSID	Check this box and the SSID will not be broadcasted to the public. Your wireless clients must know the exact SSID to be able to connect to your computer. This option is useful to enhance security level.
Allow BW 40 MHz	Check this box to allow BW 40MHz capability.
Beacon(ms)	You can define the time interval that a beacon signal should be send. Default value is 100. Do not modify this value unless you know what will be affected.
TX Power	You can select the wireless output power here. Please select a proper output power setting according to your actual needs. You may not need 100% of output power if other wireless clients are not far from you.
Idle Time	Select the idle time for the wireless access point. Default value is 300. Do not modify this value unless you know what will be affected.

To save changes, click the **Apply** button. Or you can click **Default** to reset all values to factory default value.

4.2 Security Setting

This wireless card supports wireless encryption in AP mode, which will encrypt the data being transferred over the air to enhance data security level. It's recommended to enable data encryption unless you wish to open your computer (and its internet connection) to the public.

When you click **Security Setting** in the utility, the following window will appear:



Here are descriptions of every setup item:

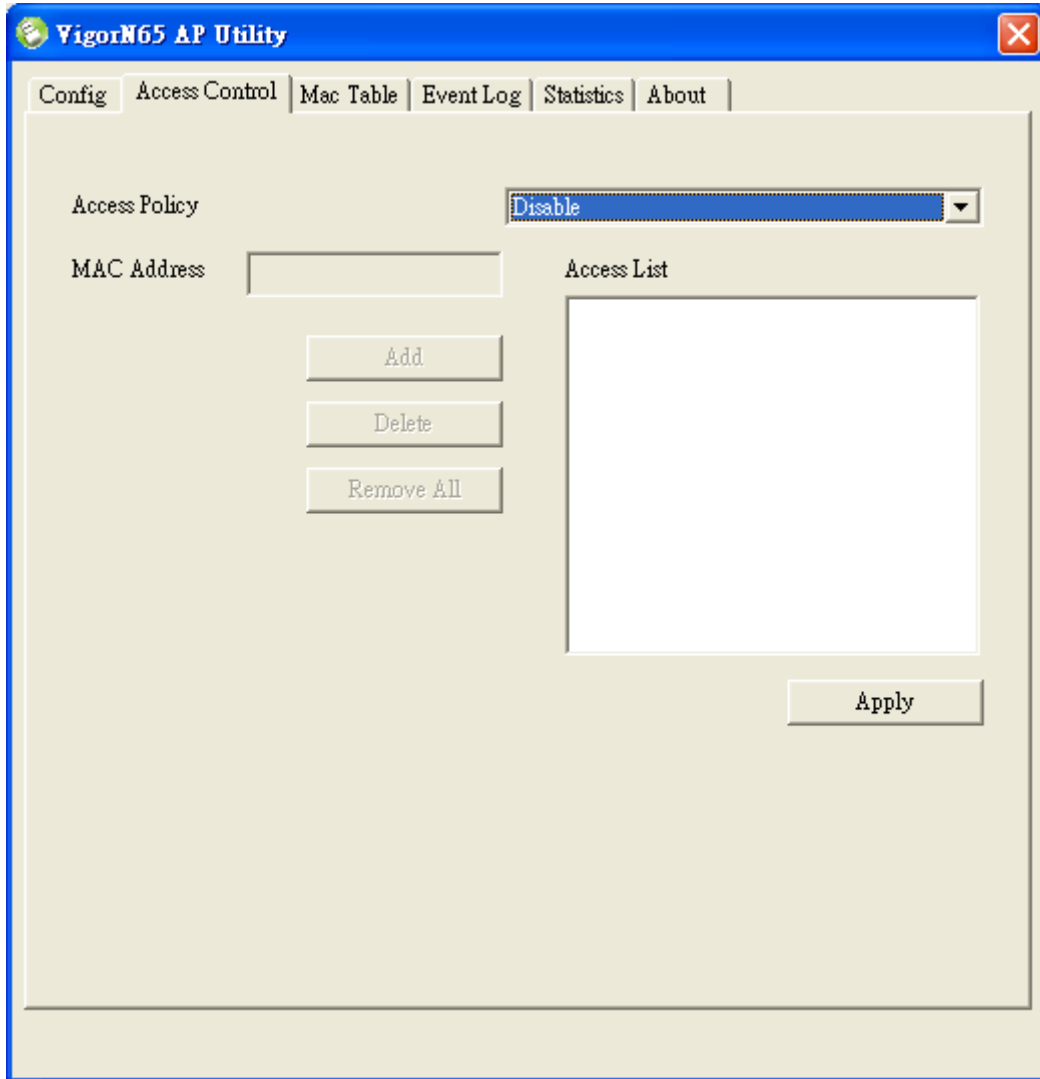
Item Name	Description
Authentication Type	Please select a wireless authentication type you wish to use. Available options are Open , Shared , WPA-PSK , WPA2-PSK , and WPA-PSK / WPA2-PSK . If you want to disable wireless data encryption, you must select Open .
Encryption Type	Please select an encryption mode. The available options in this setting item will vary depending on the authentication type you select. If you select Not Use , data will not be encrypted and people with some networking knowledge will be able to read the data you transfer with proper tool.
WPA Pre-shared Key	Please input the WPA pre-shared key here. Only clients with the same pre-shared key you inputted here will be able to connect to your computer. This setting is only available when you select one of WPA encryptions.
Group Rekey Interval	You can specify the time interval to re-issue the key to your wireless clients here. You can click the button 10 seconds or Kpackets to

	change the unit of time interval (every 10 seconds or a thousand data packets times the value you specified in Group Rekey Interval field).
Wep Key	<p>Please input the WEP encryption key here when you select WEP as encryption type. There are 2 types of WEP key: Hex (number 0 to 9, and ASCII characters A to F) and ASCII (all alphanumerical characters plus symbols). Please select the type of WEP key first, and then input the WEP key according to the type of WEP key you selected.</p> <p>If you want to use WEP 64 bits encryption, please input 10 characters if you select HEX, or input 5 characters if you select ASCII. If you want to use WEP 128bits encryption, please input 26 characters if you select HEX, or input 13 characters if you select ASCII. 128 bits encryption is safer than 64 bits, but the data transfer speed will be slightly reduced.</p>
Show Password	Check this box and the WPA pre-shared key or WEP key you inputted will be shown, but not replaced by asterisk (*).

When you finish with setting and want to save changes, click **OK** button, or click **Cancel** button to discard all changes you made.

4.3 Access Control

If you're not going to open your computer and wireless resources to the public, you can use MAC address filtering function to enforce your access control policy, so only wireless clients with MAC address you defined by this function can be connected to your software access point.



Here are descriptions of every setup item:

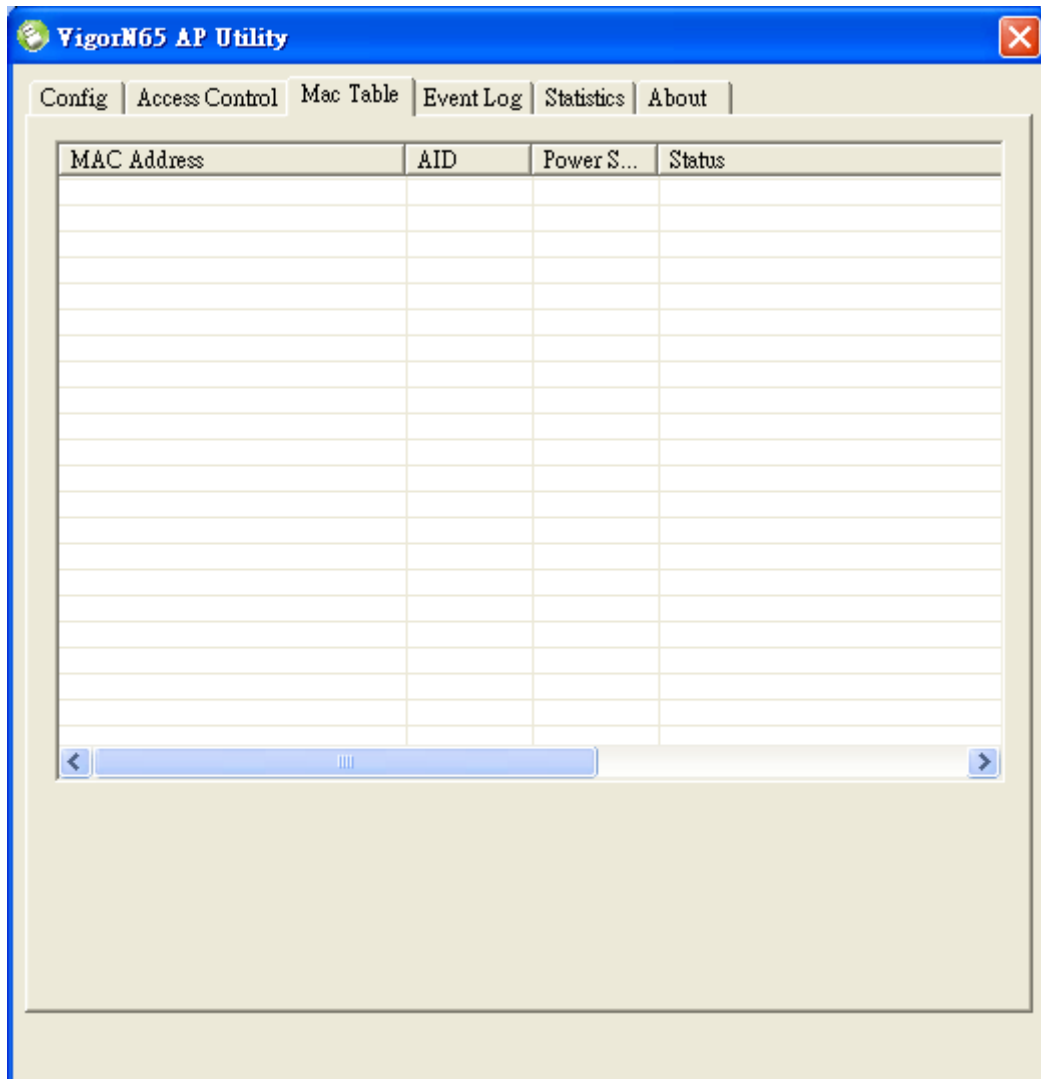
Item Name	Description
Access Policy	Select the policy type of your access rule. Disable: Allow any wireless client with proper authentication settings to connect to this access point. Allow All: Only allow wireless clients with MAC address listed here to connect to this access point. Reject All: Reject wireless clients with MAC address listed here to be connected to this access point.
MAC address	Input the MAC address of the wireless client you wish to allow or reject here. No colon (:) or hyphen (-) required.

Add	Add the MAC address you inputted in MAC address field to the list.
Delete	Please select a MAC address from the list, then click Delete button to remove it.
Remove All	Delete all MAC addresses in the list.

When you finish with setting and want to save changes, click „Apply“ button.

4.4 Connection Table

If you want to see the list of all wireless clients connected to this access point, please select **Mac Table** tab from the utility.

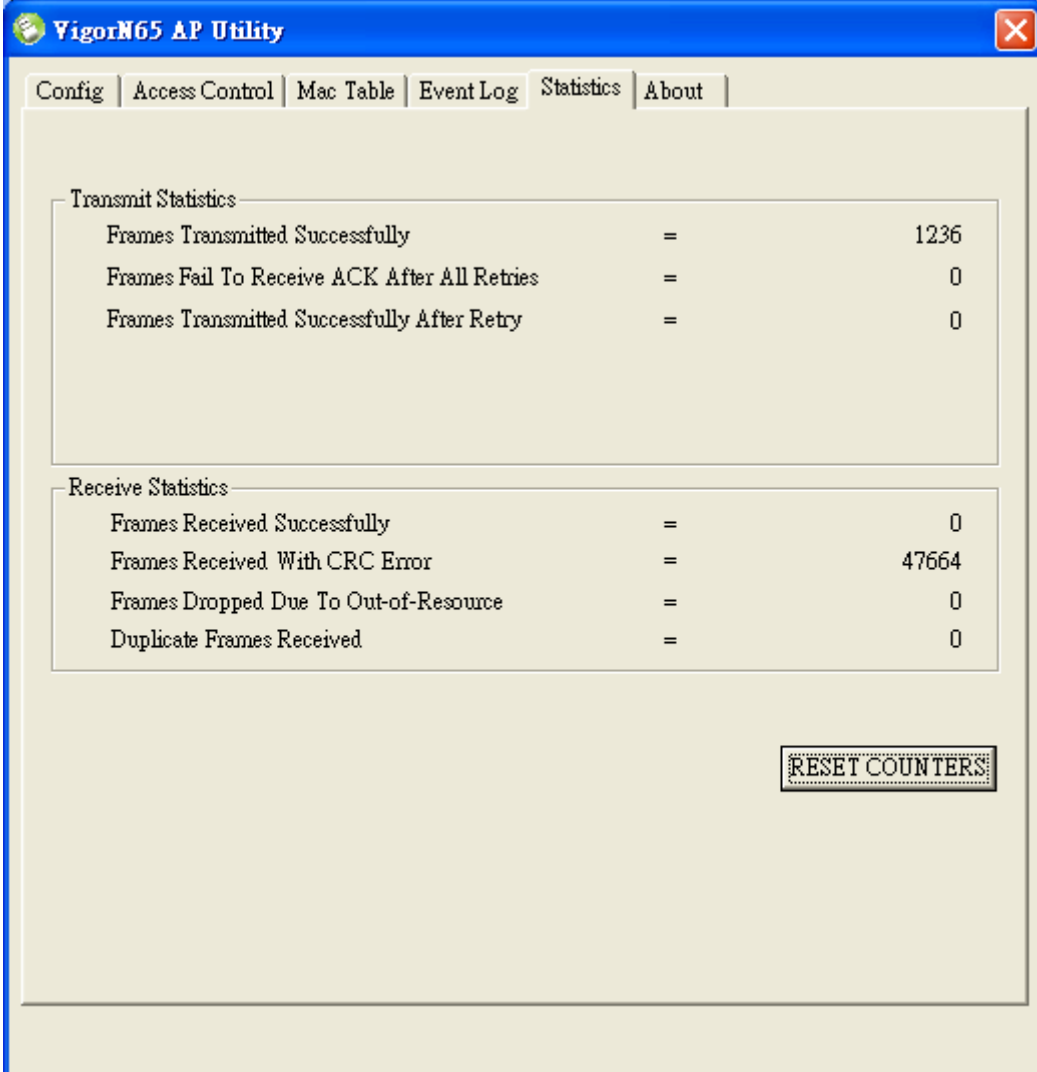


Here are descriptions of every setup item:

Item Name	Description
MAC Address	Displays the MAC address of this wireless client.
AID	The serial number of this wireless connection.

4.6 Statistics

If you want to know detailed information about how your software access point works, click **Statistics** tab, and the event log will be displayed.



The screenshot shows the 'VigorN65 AP Utility' window with the 'Statistics' tab selected. The window contains two sections: 'Transmit Statistics' and 'Receive Statistics'. Each section has a table of metrics. A 'RESET COUNTERS' button is located at the bottom right of the window.

Transmit Statistics		
Frames Transmitted Successfully	=	1236
Frames Fail To Receive ACK After All Retries	=	0
Frames Transmitted Successfully After Retry	=	0

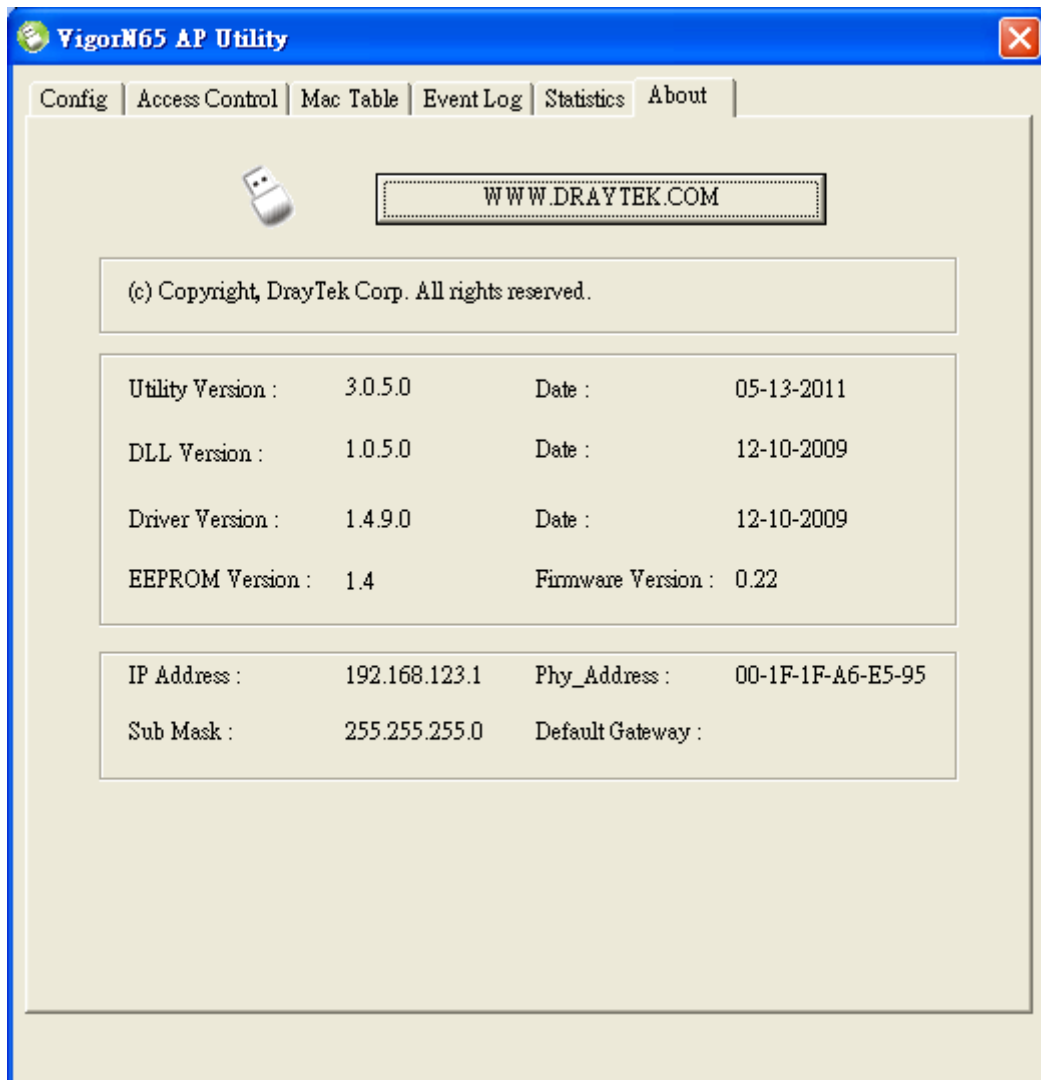
Receive Statistics		
Frames Received Successfully	=	0
Frames Received With CRC Error	=	47664
Frames Dropped Due To Out-of-Resource	=	0
Duplicate Frames Received	=	0

RESET COUNTERS

You can click **RESET COUNTERS** button to reset all counters to zero.

4.7 About

The **About** tab provides you the information about version number of the configuration utility, driver, and other important information about your wireless access point.



5

Appendix

5.1 Specification

Standards:	IEEE 802.11a/b/g and IEEE 802.11n
Interface:	USB 2.0 (USB 1.1 Compatible)
Frequency Band:	2.4000~2.4835GHz (subject to local regulations) 4.900~5.800GHz (subject to local regulations)
Data Rate:	11a: 6/9/12/24/36/48/54Mbps 11b: 1/2/5.5/11Mbps 11g: 6/9/12/24/36/48/54Mbps 11n (20MHz, 5G/2.4G): MCS0-15 (up to 144Mbps) 11n (40MHz, 5G/2.4G): MCS0-15 (up to 300Mbps)
Securities:	WEP 64/128, WPA, WPA2 Cisco CCX Support
Output Power:	2.4GHz: 11b:17±1.5 dBm ,11g:14±1.5 dBm 11n(20MHz):15±1.5 dBm, 11n(40MHz): 15 ±1.5 dBm 5GHz: 11a:12±1.5 dBm, 11n(20/40MHz): 12±1.5 dBm
Antenna:	Internal Printed Antenna (2T2R MIMO Technology)
Drivers:	Windows 2000/XP/Vista/7
LED:	Link/Activity
Dimension:	10(H) x 21(W) x 82(D) mm
Temperature:	32~104°F (0 ~ 40°C)
Humidity:	10-95% (NonCondensing)

5.2 Troubleshooting

If you encounter any problem when you're using this wireless network card, don't panic! Before you call your dealer of purchase for help, please check this troubleshooting table, the solution of your problem could be very simple, and you can solve the problem by yourself!

Q 1: I can't find any wireless access point / wireless device in Site Survey function.

Solution:

1. Click **Rescan** for few more times and see if you can find any wireless access point or wireless device.
2. Please move closer to any known wireless access point.
3. **Ad hoc** function must be enabled for the wireless device you wish to establish a direct wireless link.
4. Please adjust the position of network card (you may have to move your computer if you're using a notebook computer) and click **Rescan** button for few more times. If you can find the wireless access point or wireless device you want to connect by doing this, try to move closer to the place where the wireless access point or wireless device is located.

Q 2: Nothing happens when I click Launch Config Utility.

Solution:

1. Please make sure the wireless network card is inserted into your computer's USB port. If the VigorN95 configuration utility's icon is black, the network card is not detected by your computer.
2. Reboot the computer and try again.
3. Remove the card and insert it into another USB port.
4. Remove the driver and re-install.
5. Contact the dealer of purchase for help.

Q 3: I can not establish connection with a certain wireless access point

Solution:

1. Click **Connect** for few more times.
2. If the SSID of access point you wish to connect is hidden (nothing displayed in **SSID** field in **Site Survey** function), you have to input correct SSID of the access point you wish to connect. Please contact the owner of access point to ask for correct SSID.
3. You have to input correct security key to connect an access point with encryption. Please contact the owner of access point to ask for correct security key.
4. The access point you wish to connect only allows network cards with specific MAC address to establish connection. Please go to **About** tab and write the value of **Phy_Address** down, then present this value to the owner of access point so he / she can add the MAC address of your network card to his / her access point's list.

Q 4: The network is slow / having problem when transferring large files

1. Move closer to the place where access point is located.
2. Disable **Tx Burst** in **Advanced** tab.
3. Enable **WM** in **WM** tab if you need to use multimedia / telephony related applications.
4. Disable **WMM – Power Save Enable** in **WMM** tab.

5. There could be too much people using the same radio channel. Ask the owner of the access point to change the channel number.

Q5: Can Wireless products support printer sharing?

Wireless products perform the same function as LAN products. Therefore, Wireless products can work with Netware, Windows 2000, or other LAN operating systems to support printer or file sharing.

Q6: Would the information be intercepted while transmitting on air?

WLAN features two-fold protection in security. On the hardware side, as with Direct Sequence Spread Spectrum technology, it has the inherent security feature of scrambling. On the software side, WLAN series offer the encryption function (WEP) to enhance security and Access Control. Users can set it up depending upon their needs.

5.3 Glossary

IEEE 802.11g standard

802.11g is the new IEEE standard for high-speed wireless LAN communications that provides for up to 54 Mbps data rate in the 2.4 GHz band. 802.11g is quickly becoming the next mainstream wireless LAN technology for the home, office and public networks. 802.11g defines the use of the same OFDM modulation technique specified in IEEE 802.11a for the 5 GHz frequency band and applies it in the same 2.4 GHz frequency band as IEEE 802.11b. The 802.11g standard requires backward compatibility with 802.11b.

The standard specifically calls for:

- A. A new physical layer for the 802.11 Medium Access Control (MAC) in the 2.4 GHz frequency band, known as the extended rate PHY (ERP). The ERP adds OFDM as a mandatory new coding scheme for 6, 12 and 24 Mbps (mandatory speeds), and 18, 36, 48 and 54 Mbps (optional speeds). The ERP includes the modulation schemes found in 802.11b including CCK for 11 and 5.5 Mbps and Barker code modulation for 2 and 1 Mbps.
- B. A protection mechanism called RTS/CTS that governs how 802.11g devices and 802.11b devices interoperate.

IEEE 802.11b standard

The IEEE 802.11b Wireless LAN standard subcommittee formulates the standard for the industry. The objective is to enable wireless LAN hardware from different manufactures to communicate.

IEEE 802.11 feature

The product supports the following IEEE 802.11 functions:

CSMA/CA plus Acknowledge Protocol

- Multi-Channel Roaming
- Automatic Rate Selection
- RTS/CTS Feature
- Fragmentation
- Power Management

Ad-hoc

An Ad-hoc integrated wireless LAN is a group of computers, each has a Wireless LAN card, Connected as an independent wireless LAN. Ad hoc wireless LAN is applicable at a departmental scale for a branch or SOHO operation.

Infrastructure

An integrated wireless and wireless and wired LAN is called an Infrastructure configuration. Infrastructure is applicable to enterprise scale for wireless access to central database, or wireless application for mobile workers.

BSS ID

A specific Ad hoc LAN is called a Basic Service Set (BSS). Computers in a BSS must be configured with the same BSS ID.

WEP

WEP is Wired Equivalent Privacy, a data privacy mechanism based on a 40 bit shared key algorithm, as described in the IEEE 802.11 standard.

TKIP

TKIP is a quick-fix method to quickly overcome the inherent weaknesses in WEP security, especially the reuse of encryption keys. TKIP is involved in the IEEE 802.11i WLAN security standard, and the specification might be officially released by early 2003.

AES

AES (Advanced Encryption Standard), a chip-based security, has been developed to ensure the highest degree of security and authenticity for digital information, wherever and however communicated or stored, while making more efficient use of hardware and/or software than previous encryption standards. It is also included in IEEE 802.11i standard. Compare with AES, TKIP is a temporary protocol for replacing WEP security until manufacturers implement AES at the hardware level.

DSSS vs FHSS

Frequency-hopping spread-spectrum (FHSS) uses a narrowband carrier that changes frequency in a pattern that is known to both transmitter and receiver. Properly synchronized, the net effect is to maintain a single logical channel. To an unintended receiver, FHSS appears to be short-duration impulse noise. Direct-sequence spread-spectrum (DSSS) generates a redundant bit pattern for each bit to be transmitted. This bit pattern is called a chip (or chipping code). The longer the chip is, the greater the probability that the original data can be recovered. Even if one or more bits in the chip are damaged during transmission, statistical techniques embedded in the radio can recover the original data without the need for retransmission. To an unintended receiver, DSSS appears as low power wideband noise and is rejected (ignored) by most narrowband receivers.

Spread Spectrum

Spread Spectrum technology is a wideband radio frequency technique developed by the military for use in reliable, secure, mission-critical communication systems. It is designed to trade off bandwidth efficiency for reliability, integrity, and security. In other words, more bandwidth is consumed than in the case of narrowband transmission, but the trade off produces a signal that is, in effect, louder and thus easier to detect, provided that the receiver knows the parameters of the spread-spectrum signal being broadcast. If a receiver is not tuned to the right frequency, a spread-spectrum signal looks like background noise. There are two main alternatives, Direct Sequence Spread Spectrum (DSSS) and Frequency Hopping Spread Spectrum (FHSS).

WMM

Wi-Fi Multimedia (WMM), a group of features for wireless networks that improve the user experience for audio, video and voice applications. WMM is based on a subset of the IEEE 802.11e WLAN QoS draft standard. WMM adds prioritized capabilities to Wi-Fi networks and optimizes their performance when multiple concurring applications, each with different latency and throughput requirements, compete for network resources. By using WMM, end-user satisfaction is maintained in a wider variety of environments and traffic conditions. WMM makes it possible for home network users and enterprise network managers to decide which data streams are most important and assign them a higher traffic priority.

WMM Power Save

WMM Power Save is a set of features for Wi-Fi networks that increase the efficiency and flexibility of data transmission in order to conserve power. WMM Power Save has been optimized for mobile devices running latency-sensitive applications such as voice, audio, or video, but can benefit any Wi-Fi device. WMM Power Save uses mechanisms included in the IEEE 802.11e standard and is an enhancement of IEEE 802.11 legacy power save. With WMM Power Save, the same amount of data can be transmitted in a shorter time while allowing the Wi-Fi device to remain longer in a low-power “dozing” state.

GI

GI stands for Guard Interval. It’s a measure to protect wireless devices from cross-interference. If there are two wireless devices using the same or near channel, and they are close enough, radio interference will occur and reduce the radio resource usability.

STBC

STBC stands for Space-Time Block Coding, which is a technique used to transfer multiple copies of data by multiple antenna, to improve data transfer performance. By using multiple antennas, not only data transfer rate is improved, but also the wireless stability.

WPS

WPS stands for Wi-Fi Protected Setup. It provides a simple way to establish unencrypted or encrypted connections between wireless clients and access point automatically. User can press a software or hardware button to activate WPS function, and WPS-compatible wireless clients and access point will establish connection by themselves. There are two types of WPS: PBC (Push-Button Configuration) and PIN code.