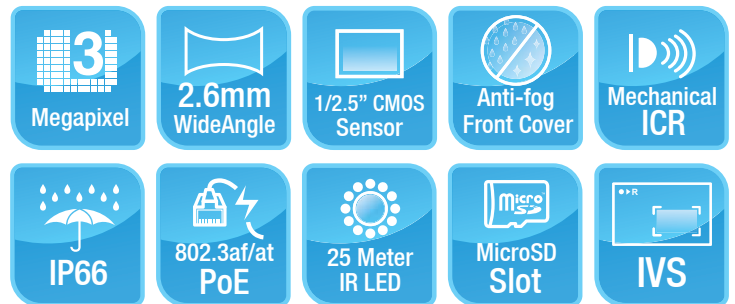


BU-3026-IVS

3-Megapixel 25 meter Wide Angle IR Bullet Type IPCAM with Video Analytics

- IP66 Housing with Cable through Bracket
- 3-Megapixel 1/2.5" CMOS Sensor
- Support 25FPS at 2048x1536 or 30FPS at 1080P
- 802.3af PoE Port
- 2.6mm CS Mount Wide Angle Lens
- Low Lux Sensor for Ultra Bright Images
- 25m IR LEDs
- Anti-fog Front Cover
- Mechanical Removable IR-Cut Filter
- MicroSD Card Slot for Local Storage
- Two-Way Audio, DI/DO
- Clear Motion Technology for Moving Objects
- WDR Enhanced
- Compatible with ONVIF Standard
- Built-in Intelligent Video Analytics Including Face Detection, iMotion Detection, Trip Zone, Object Counting, Face Recognition, e-Fence
- Free 64-Channel Recording Software



The BU-3026-IVS IP Camera is the latest bullet type camera from AirLive. With built-in 3-Megapixel CMOS sensor and CS mount wide angle lens, AirLive BU-3026-IVS offers excellent video quality and large area surveillance. With IP66 housing with cable through bracket, this camera can sustain severe environments and prevent from being damaged by gangster. Furthermore, BU-3026-IVS can work day and night with ICR and 25 meter IR LED.

3-Megapixel Resolution and CS Mount Ultra Wide Lens

AirLive BU-3026-IVS provides 3-Megapixel high definition resolution at 25 frames per second and 1080P at 30 frames per second. With CS Mount 2.6mm ultra wide high quality lens, AirLive BU-3026-IVS can secure larger area compare to normal camera and outstanding low lux video quality.

IP66 Waterproof Housing, Cable through bracket and Anti-Fog Front Cover

The outdoor environment is unexpected. The rugged IP66 waterproof housing can stand harshest circumstances and the cable through bracket can also protect the extend cables from the destruction by invaders. Moreover, to avoid the fog on the glass, Anti-fog front cover is applied for AirLive BU-3026-IVS.

MicroSD Card Recording

With the Built-in MicroSD card slot, this camera can record video in itself locally without PC or NVR. AirLive BU-3026-IVS supports Micro SDXC up to 64GB capacity for longer video recording. Customer can save cost to set up surveillance easily.

IR Night Vision and IR-CUT Removable (ICR)

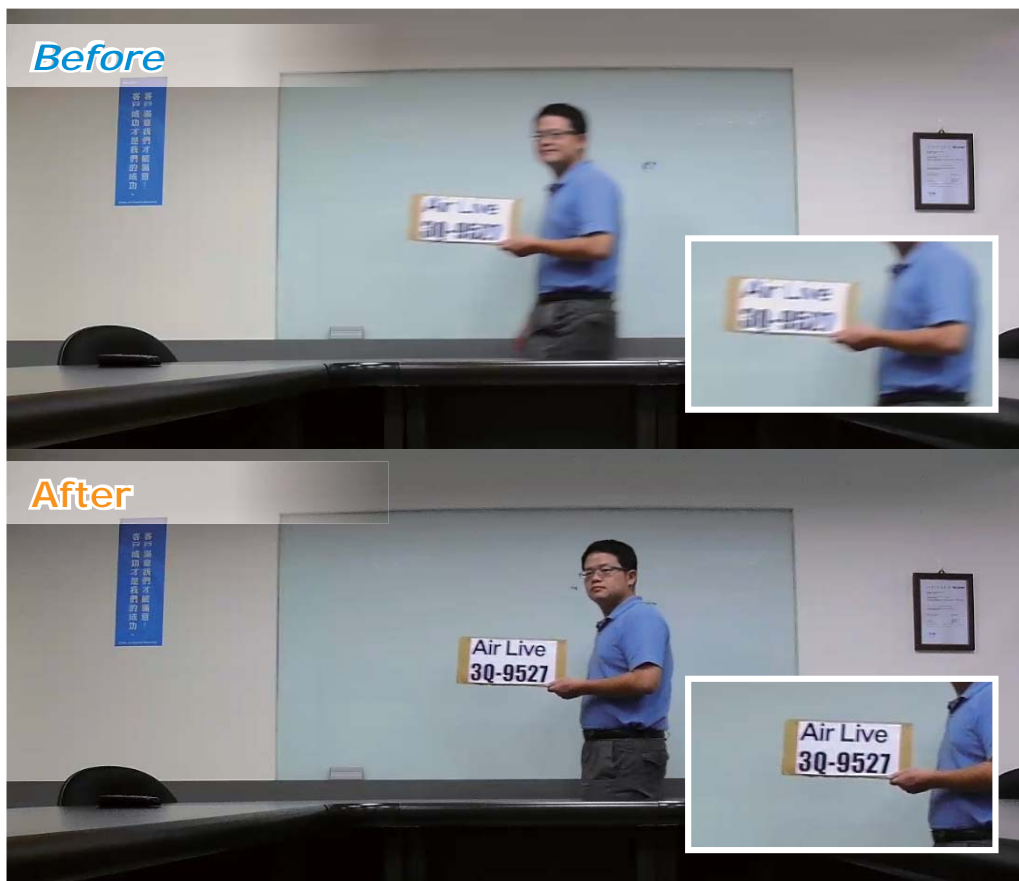
AirLive BU-3026-IVS is designed for outdoor surveillance no matter day or night; therefore, it is equipped with high resolution CMOS sensor and 25meter infrared LEDs. The auto-changeable IR-Cut filter also provides superior performance for day and night.

Two-Way Audio and DIDO

With two-way audio feature, you have the ability to watch, hear and response remotely. Real-time over the Internet communication is simply by using the standard Microsoft IE browser. In order to speak, all you need are microphones and speakers in the computer and camera location. It also supports DIDO for external sensor and alarm equipments.

Clear Motion Technology

AirLive BU-3026-IVS has the Clear Motion Technology to minimize the motion blur caused by moving objects. So you can have the details what you need.



Support WDR

When strong back light is surrounding a subject, the camera with wide dynamic range technology can adjust the intense backlight and dark area to balance the whole screen; therefore, user can recognize the details in the bright and dark area.



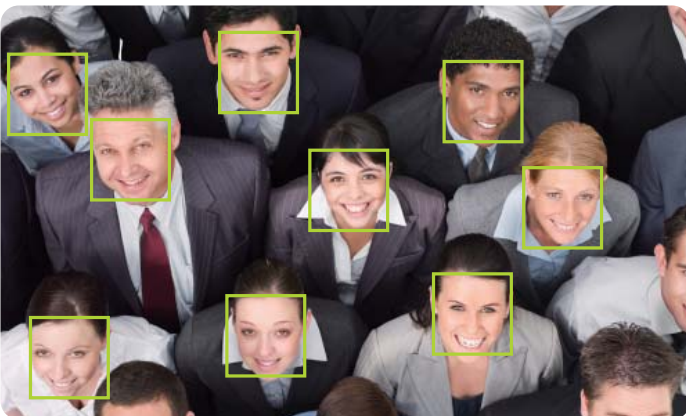
Tampering Detection

The tampering detection function will trigger alarm when AirLive BU-3026-IVS is under attack. For example, if the intruder tries to turn camera to the other side, AirLive BU-3026-IVS will recognize the attack and send out the alarm or trigger the digital output devices.



Intelligent Video Analytics

AirLive BU-3026-IVS provides multiple intelligent video analytics that helps you to save your human resources and reaches the goal of automatic surveillance.



Face Detection

Face detection is a precise feature which needs highly accurate rate of recognition on human faces only. The software is able to count many faces in the image and also highlights those faces simultaneously so the administrator will be easier to look in detail on each face at a specific environment.

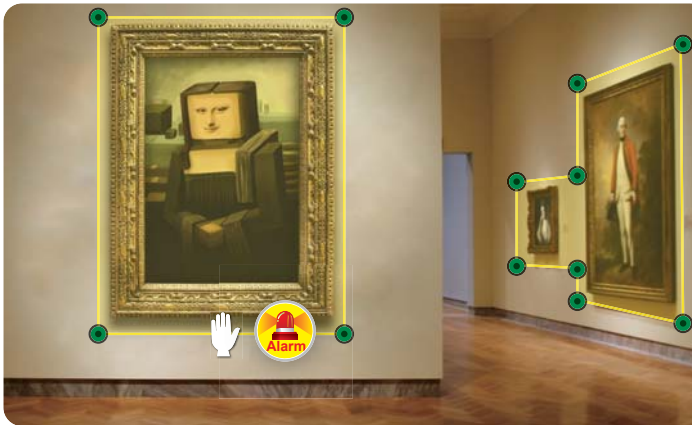
Face Recognition

The key feature of Face Recognition is to recognize faces for access control or any suspicious persons in camera which is matched to the database. You can save up to 10 face images to AirLive BU-3026-IVS for recognition, so when the camera catches the face which is matched the database, the camera will trigger the related output devices for necessary reaction.



iMotion Detection

Intelligent Motion Detection is able to increase accuracy of detection and also provides more flexible settings with polygon for the detection area



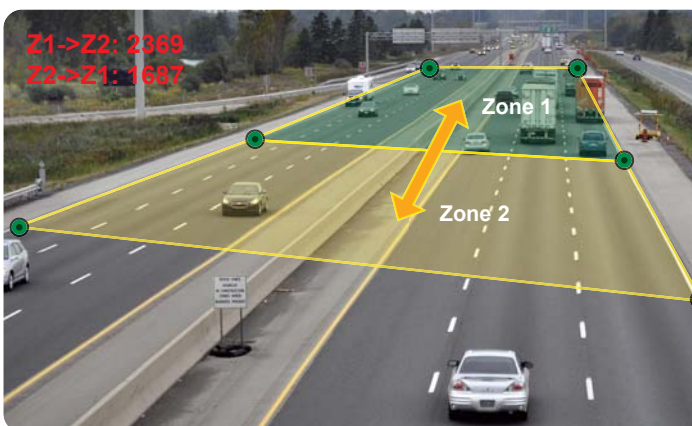
e-Fence

The eFence is an electronic fence protection system which is able to detect and send output alert if any object is crossing the boundaries you set in the camera. eFence can be used in many applications, such as a standalone protection area, or other protection systems, like airports, power plants, radio towers or even military camps.



Object Counting

The Object Counting makes store owners easier to calculate the number of people in and out of the store. You may choose one way or two way directions for counting. The numbers can be displayed on screen and saved to the database. It is also useful to calculate the amount of traffic flow on the highway.



Manufacturer

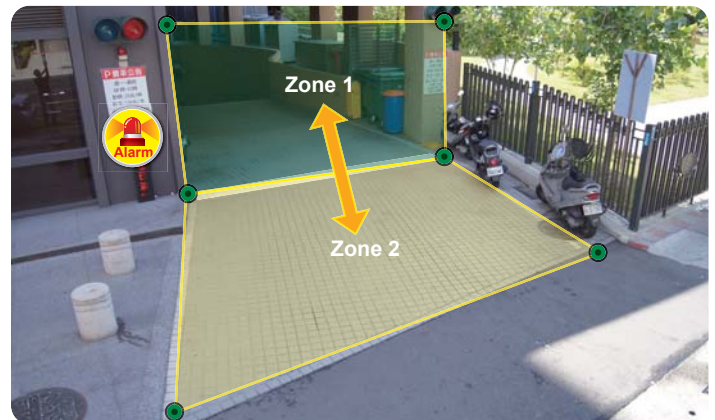
OvisLink Corp.

5F, No.96, Min-Chuan Rd., Hsin-Tien Dist., New Taipei City 231, TAIWAN

www.airlive.com

Trip Zone

The Trip Zone is an area protection based on two virtual areas with a line in center drawn in the software. When any object moves across the line, it will trigger BU-3026-IVS and trigger alarm. It can detect one way direction or two way directions. It is useful to protect walls, railroad platform, or parking lot entrance.



64-Channel Recording Software and IP Wizard

The surveillance software CamPro Express 64 let user to view and record multiple live images at the same time. Using several supported Camera with CamPro Express 64, user can easily build up a surveillance system at different environment. Moreover, BU-3026 also supports CamPro Professional, which is AirLive's intelligent video surveillance recording software. It is designed to meet most demands for professional installations. With its video analysis functions, such as tampering detection, user can build up a stable and efficient surveillance system.



APPS for Mobile Device

AirLive provides CamPro Mobile APP for iOS/Android device, so you can view multiple AirLive IP cameras by your mobile device. For more information, please visit the APP store or Android market.



Specifications

Camera

Camera Type

- Bullet Type

Max Resolution

- 2048x1536

Image Sensor

- 1/2.5" CMOS Sensor

Lens Type

- CS Mount Lens
- 2.6mm, F1.2

Night Vision

- Yes

Max IR Distance

- 25m

Minimum Illumination

- 0.2 Lux at F1.2 (Color)

Mechanical IR-Cut Filter

- Yes

Viewing Angle

- 160 °(D),
- 105 °(H),
- 72 °(V)

Video

Video Compression

- H.264
- MPEG-4
- MJPEG

Video Profile

- Yes

Resolution and Frame Rate

- 25 fps @ 2048 X 1536

- 30 fps @ 1920 X 1080
- 30 fps @ 1280 x 1024
- 30 fps @ 1280 X 960
- 30 fps @ 1280 X 720
- 30 fps @ 720 X 480
- 30 fps @ 640 X 480
- 30 fps @ 320 X 240
- 30fps @ 160 X 120

Streaming

- Streaming over UDP, TCP, or HTTP
- 3GPP mobile view
- Configurable frame rate and bandwidth
- Support both CBR and VBR

Region of Interest

- Yes

Image Processing

- AE, BLC, AW
- Brightness, sharpness, contrast, saturation
- Mirror/Flip
- Privacy Masks
- Text, time and date OSD
- AirLive Clear Motion Technology for Moving Objects

Digital Zoom

- 10x

Audio

Audio Encoder

- G.711 / AMR (Only for 3GPP)

Audio Streaming

- Two-way

Audio Input/Output

- 1 Line in, 1 Line out

Network

Ethernet

- Ethernet (10/100 Base-T), RJ-45

PoE

- IEEE802.3af

Supported Protocols

- TCP/IP,IPV6, UDP, ICMP ,DHCP ,NTP ,DNS ,DDNS ,SMTP ,FTP ,HTTP HTTPs ,Samba, PPPoE ,UPnP, Bonjour, RTP,RTSP,RTCP, DLNA, ISCSI, ONVIF 2.2

Security

- Password protection
- IP filter, HTTPS encrypted data transmission

Users

- Up to 10 simultaneous users

LED and Button

Power LED

- Yellow Color

Link/Act. LED

- Orange Color

Reset Button

- Reboot and Factory Default (Push and Hold Over 5 Sec)

General

Network Processor

- DSP Base

System ROM

- 128M byte NAND Flash

System RAM

- 128M byte DDR SDRAM

Power Supply

- DC 12V/1.08A

Power Consumption

- IR on: 8 Watts max. , IR off: 5 Watts max.

Connector

- RJ-45 10BaseT/100BaseTX
- Mic jack, Audio jack, DI/DO, DC jack, Ethernet/ PoE

Environment

- Temperature: -20°C ~ 55°C (-4°F ~131°F)
- Humidity: 20% ~ 85%

SD card slot

- MicroSD

Dimension

- 84 mm x 82mm x 193 mm

System Integration

Software

- CamPro Express 64, CamPro Professional
- Search & Installation-IP Wizard II
- AirLive CamPro Mobile

Event Triggers

- Motion detection, External input via DI interface, Tamper detection, Periodically time

Motion Detection

- 3

Event handler

- FTP, Samba Server, SD card file upload
- E-mail alert
- HTTP, and TCP notification
- DO (digital output) alarm
- Audio File Playback

UPNP

- Yes

Application Programming Interface

- ONVIF 2.2
- Open API for software integration
- SDK

Video Buffer

- Pre- and post- alarm buffering

Alarm Triggers

- Motion detection, External input via DI interface, Tamper detection, Periodically time

Continuous recording

- Yes

Intelligent Video Analytics(IVS)

Build in IVS function

- Face detection
- iMotion detection
- Trip zone
- Object counting
- Face recognition
- e-Fence

Viewing System

OS

- Windows® XP, Vista, 7, 8

Browser

- IE 7 or later; Safari 2 or above; Firefox 2.0 or above; Chrome

Cell Phone

- With 3GPP player, CamPro Mobile for iOS/ Android device

Video Player

- VLC, Quick Time, Real Player, Core Player

Ordering Information:

AirLive BU-3026-IVS 3-Megapixel 25 meter Wide Angle IR Bullet Type IPCAM with Video Analytics