

Synology USB Station

User's Guide



Document #: Syno_US_UG_20060110_enu

Index

Legal Notices	3
Get to know Synology USB Station.....	5
Packing List.....	5
Hardware Specifications.....	5
Hardware Descriptions	5
LED Descriptions	5
Software Specifications	6
Limitations	6
Managing Synology USB Station	8
Entering Management UI	8
Home.....	10
Summary	11
Device Info.....	12
About	13
System	14
Identification.....	15
Network.....	16
Password.....	17
Enable FTP Service	18
Time.....	19
Tools.....	21
Restart	21
Firmware Upgrade	22
Factory Default	23
Wizard.....	24
Device	26
Formatting USB Disk	26
Ejecting USB Disk.....	27
Accessing USB Disk	28
Windows User.....	28
Mac User	31
Sharing USB Printer.....	32
PC Backup Solution	33
Before Starting.....	33
Basic PC Requirements	33
Installing Synology Data Replicator II.....	33
Using Synology Data Replicator II.....	34
Troubleshooting	35
Appendix.....	36
Suggested Printers.....	36
Support Information.....	37

Legal Notices

Please read this chapter for the legal notices before using USB Station.

Copyright Notice

All title, copyright and other intellectual property rights in and to the Software Product (including but not limited to any relevant media, images, photographs, animations, video, audio, music, text, and applets incorporated into the Software Product), the accompanying manuals and other documents, and on-line or electronic documents, if any, (collectively “Software Product”) are owned by Synology Inc. Unless otherwise expressly licensed by Synology Inc. in writing, any provision of the Software Product does not represent any license of any of the above rights.

Copyright © 2004-2006 Synology Inc.; All rights reserved.

Trademark Notice

Synology and other names of Synology products are trademarks or registered trademark of Synology Inc.

Microsoft, Windows, Windows 2000, and Windows XP are trademarks of Microsoft Corporation.

Apple, Macintosh, Mac, and Mac OS are trademarks of Apple Computer, Inc.

Other products and company names mentioned herein are trademarks of their respective holders.

Limited Warranty

Synology provides limited warranty for its product only to the person or entity that originally purchased the product from Synology or its authorized distributor or retailer. Synology guarantees that every hardware portion of the product will be free from physical defects in material and workmanship for one year from the date of purchase. If the product proves defective during this warranty period,

contact with the local dealer in order to obtain assistance. Be sure to have your proof of purchase and a barcode number from the product's packaging on hand when asking for assistance.

Synology makes no guarantee that all data stored on the USB disk connected to USB Station is always secure without any risks of data losing. Synology reminds you to back up the data periodically. Under no circumstances shall Synology be liable in any way to the user for damages, including any savings, lost profits or other incidental or consequential damages arising out of the use of, or inability to use Synology products.

Synology reserves all rights to revise or update its products, software, or related documentation without further notice.






Synology products are not intended for use in medical, life saving, or life sustaining applications.

Revisions

Synology Inc. reserves the right to revise this publication and to make changes in the content hereof without the obligation to notify any person of such revision or changes.

Get to know Synology USB Station

Packing List

Synology USB Station		Synology USB Station Resource CD	
2M RJ-45 cable		AC power adapter	
Synology USB Station Quick Installation Guide			

Hardware Specifications

Hardware Descriptions

SDRAM: 16 MB
Flash: 4 MB
USB 2.0 and 1.1 Compliant.
DC 5V Power Jack
RJ-45 10/100Mbps auto-sensing 10BASE-T / 100BASE-TX port
LED indication
-Power
-LAN
-USB Disk
Reset button
Disconnect button
-Used to disconnect USB disk

LED Descriptions

LED Indication	Color	Status	Description
Power	Green	Steady	Power is on and the system is ready
		Off	Power is off
LAN	Green	Blinking	Receiving or transmitting data
		Steady	Well connected to the network

		Off	Not connected to the network or the connection is abnormal
USB Disk	Green	Blinking	- “Disconnect” on the device is pushed - “Eject” on the management UI is clicked - USB disk is just plugged in
		Steady	USB disk is mounted and shared
		Off	No USB disk is plugged in or the USB disk is disconnected

Software Specifications

System Configuration
Localized Management UI: English, German, French, Italian, Spanish, Japanese, Korean, Traditional Chinese, Simplified Chinese.
NTP Client
Firmware Upgrade
Reset to Default
USB Device Support
Up to 2 USB printers
Up to 1 USB disk/card reader/flash drive
Concurrent Connections to USB disk
When USB disk is larger than 2GB: 16
When USB disk is smaller than 2GB: 4
Printing protocol
LPR
CIFS
IPP
Network Setting
Manual Configuration
DHCP auto IP Assignment
File Sharing
SMB/CIFS and NetBEUI
FTP Support
User Permission Management
Supported File System Format: EXT3, FAT
Disk Format Tool
Client Assistant
Supports Windows/Mac OS X
System Configuration Wizard
Printer Setup Wizard (Windows only)
Network Drive Mapping Wizard (Windows only)

Limitations

<<Notice>> **Synology USB Station** supports up to 2 printers and 1 USB disk simultaneously. Since **Synology USB Station** only provides 2 USB ports, if you

need to connect 2 printers and 1 USB disk at the same time, please use a USB hub to connect the 3 devices, however, due to the variety of USB hub brands and models available in the market, **Synology USB Station** is not guaranteed to be compatible with all USB hubs.

Managing Synology USB Station

Read this chapter to learn how to add printer, re-configure the system, and upgrade firmware.

<<Notice>> PC User is recommended to use IE 6.0 or above; Mac User is recommended to use Safari 1.3 or IE 5.2 or above to ensure flawless management process.

<<Notice>> Unless specified, the following descriptions are based on Windows environment.

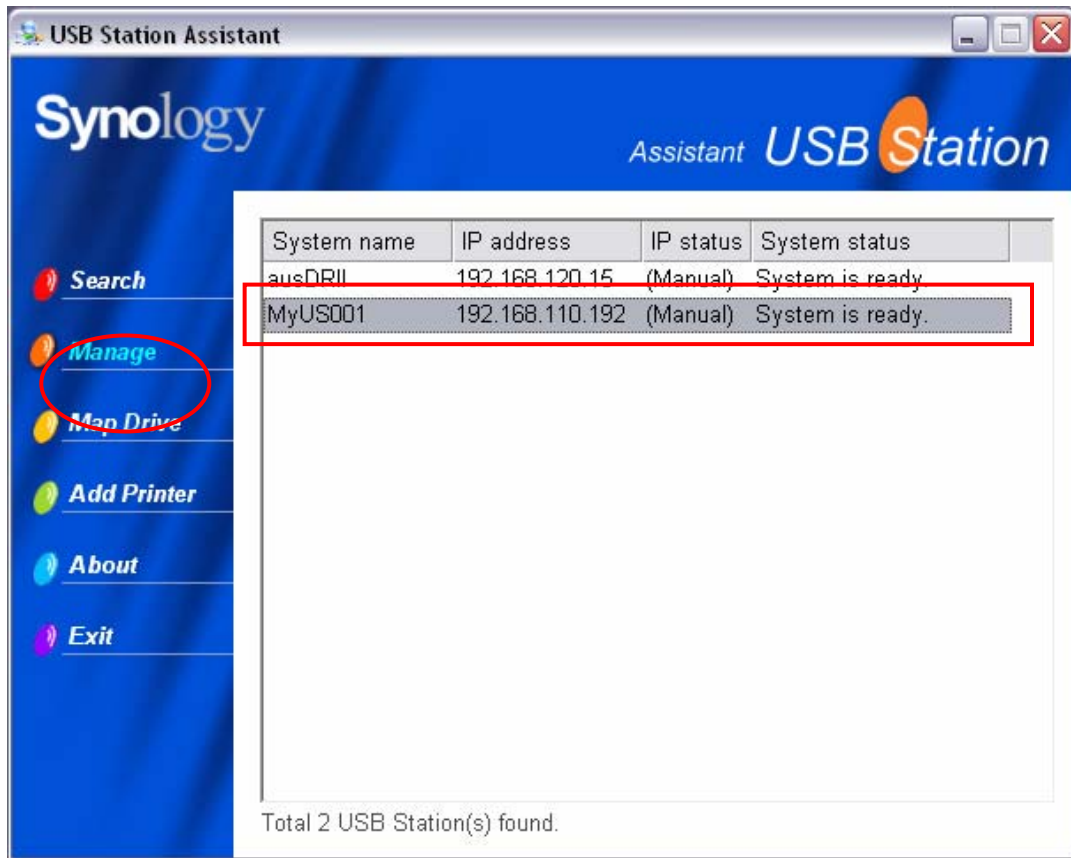
Entering Management UI

Before you could start to manage **Synology USB Station**, follow the following steps to enter the management UI.

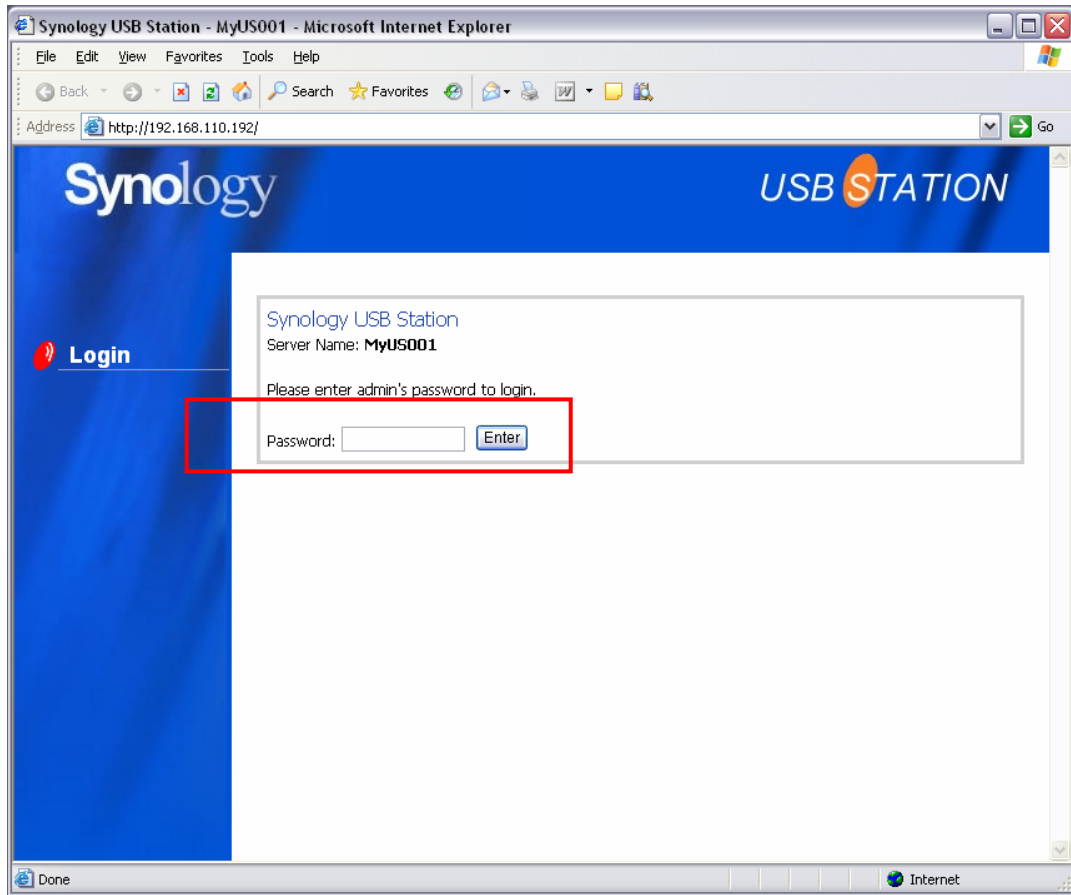
1. Open **USB Station Assistant**



2. Click the **Synology USB Station** device you want to manage.
3. Click <Manage>

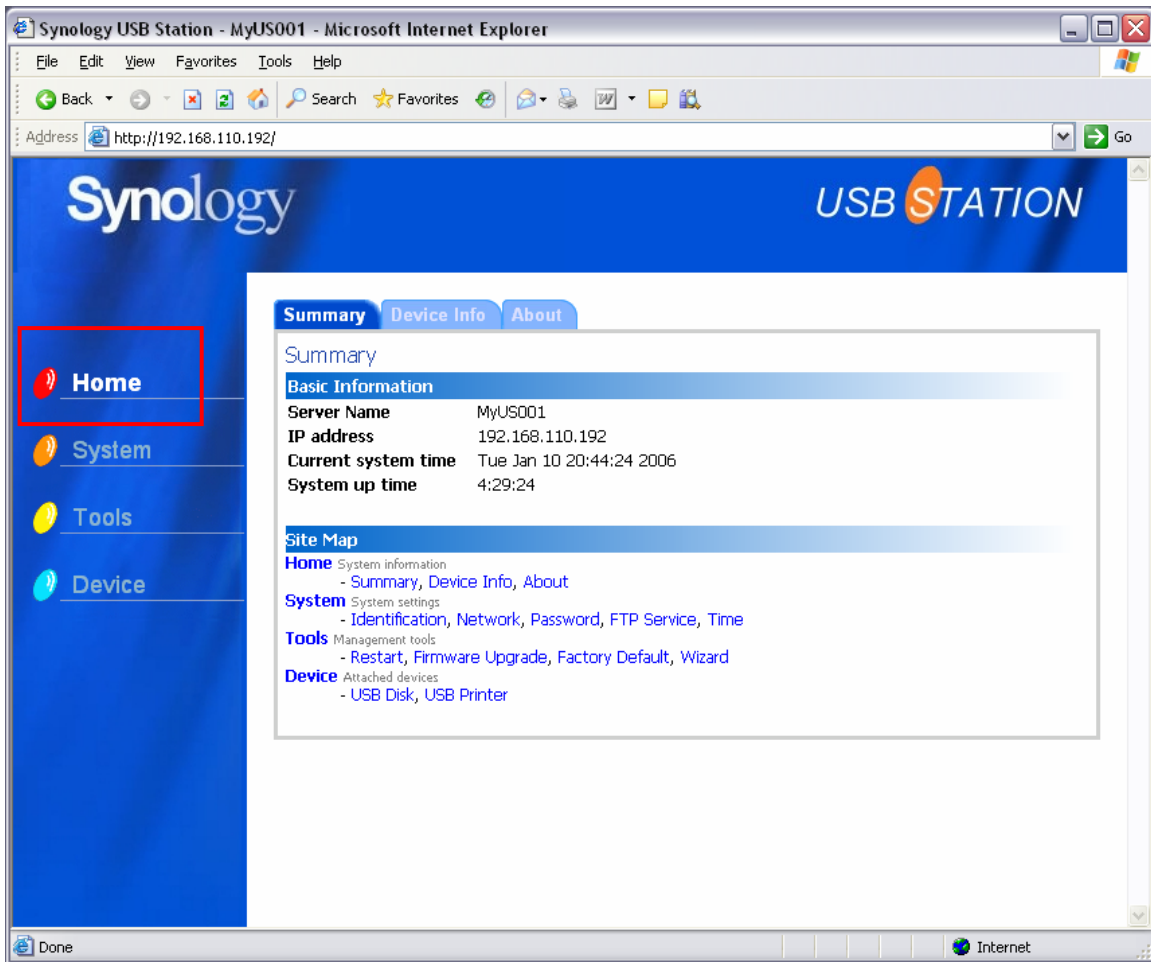


4. Enter the administrator's password, and click <Enter>.



Home

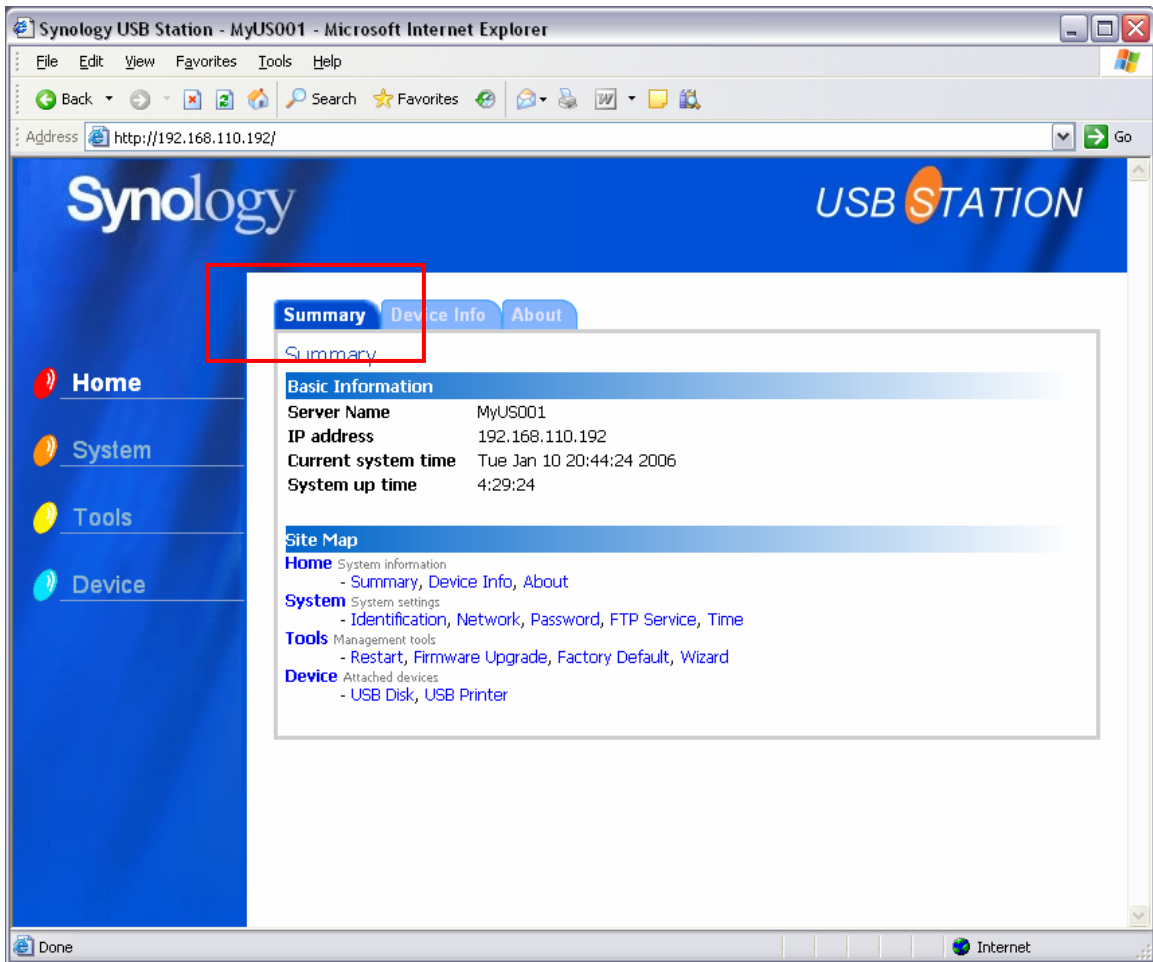
In the "Home" section, you can check system summary and device information.



Summary

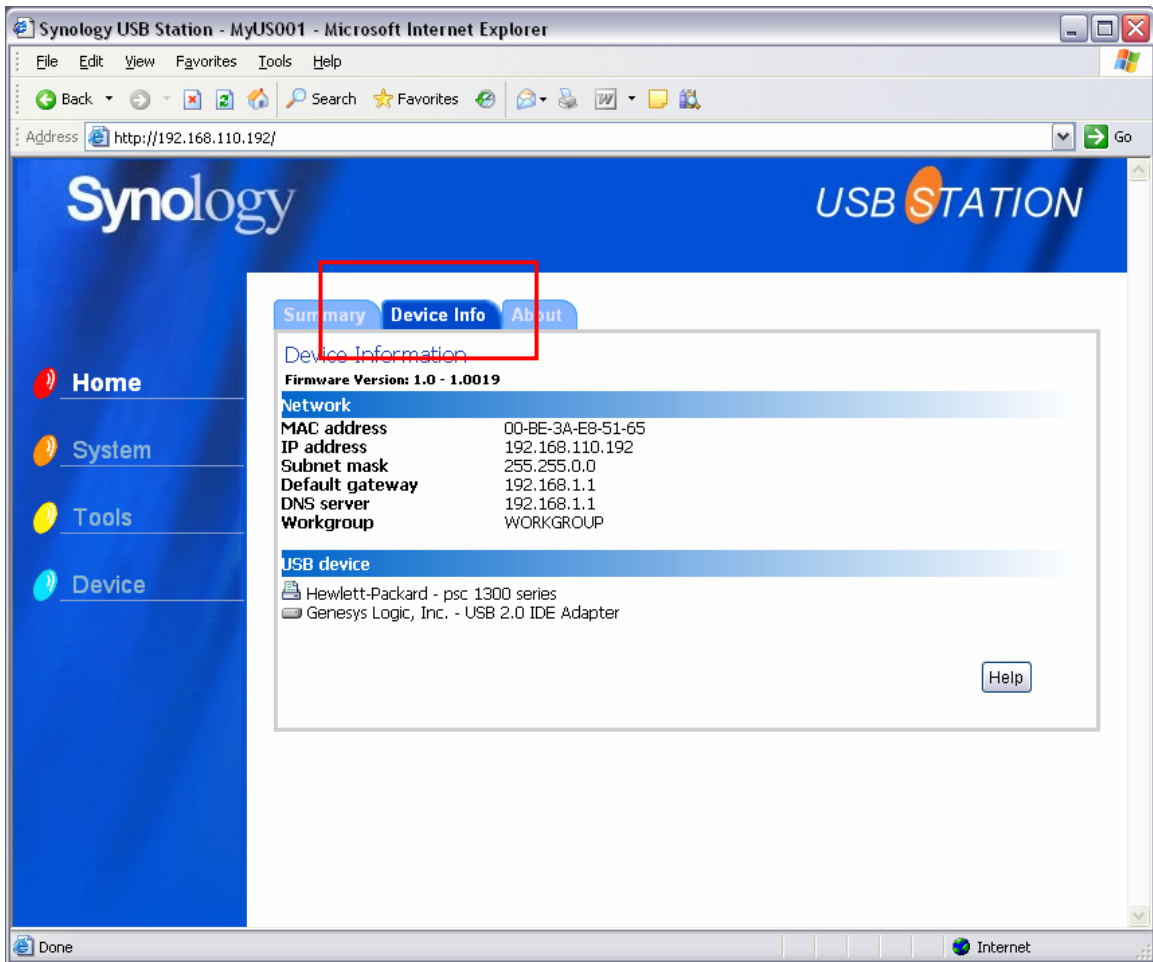
The page lists all basic information and site map of **Synology USB Station**:

1. The “Summary” section reveals the basic information such as server name, IP address;
2. The “Site Map” section is like a network map, which lists all function links of **Synology USB Station**, you can click any link to enter that management page of that link.



Device Info

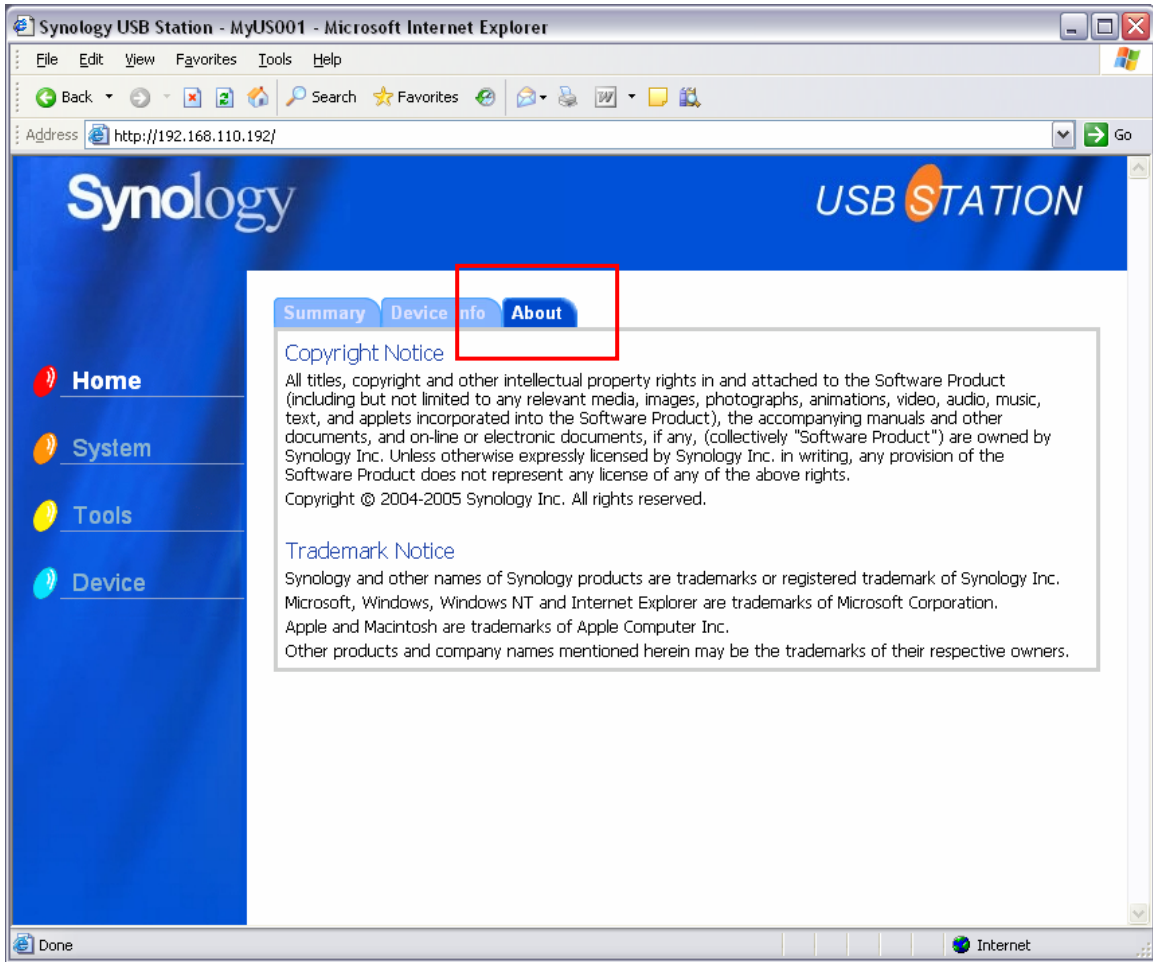
You can view the network information and USB device information attached to **Synology USB Station** on this page.



<<Notice>> Anytime you need to get assisted, you can click the <Help> button for more information.

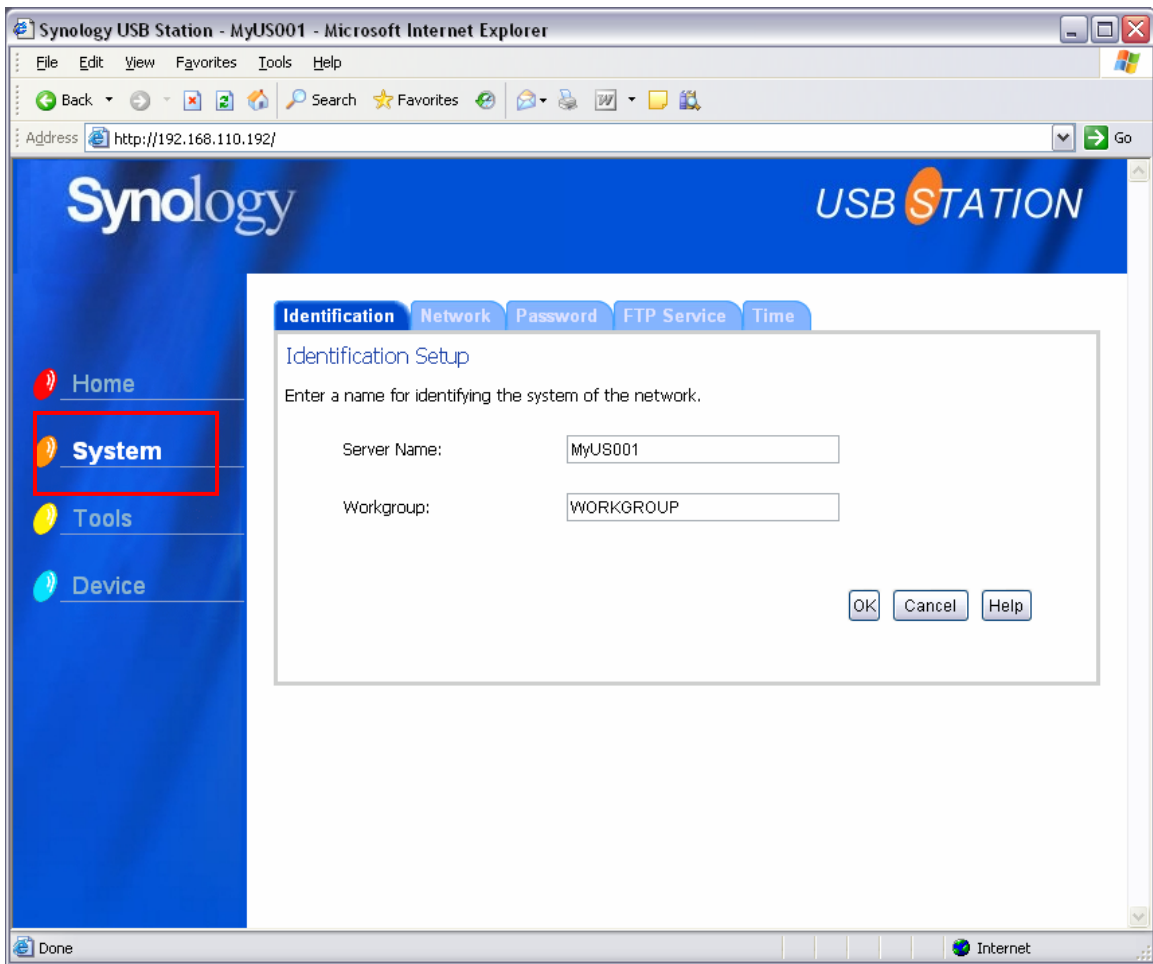
About

You can read all related legal notices on this page.



System

In the "System" section you can change the server name, network settings, password, time, and set the access right to the share folder of the USB disk.

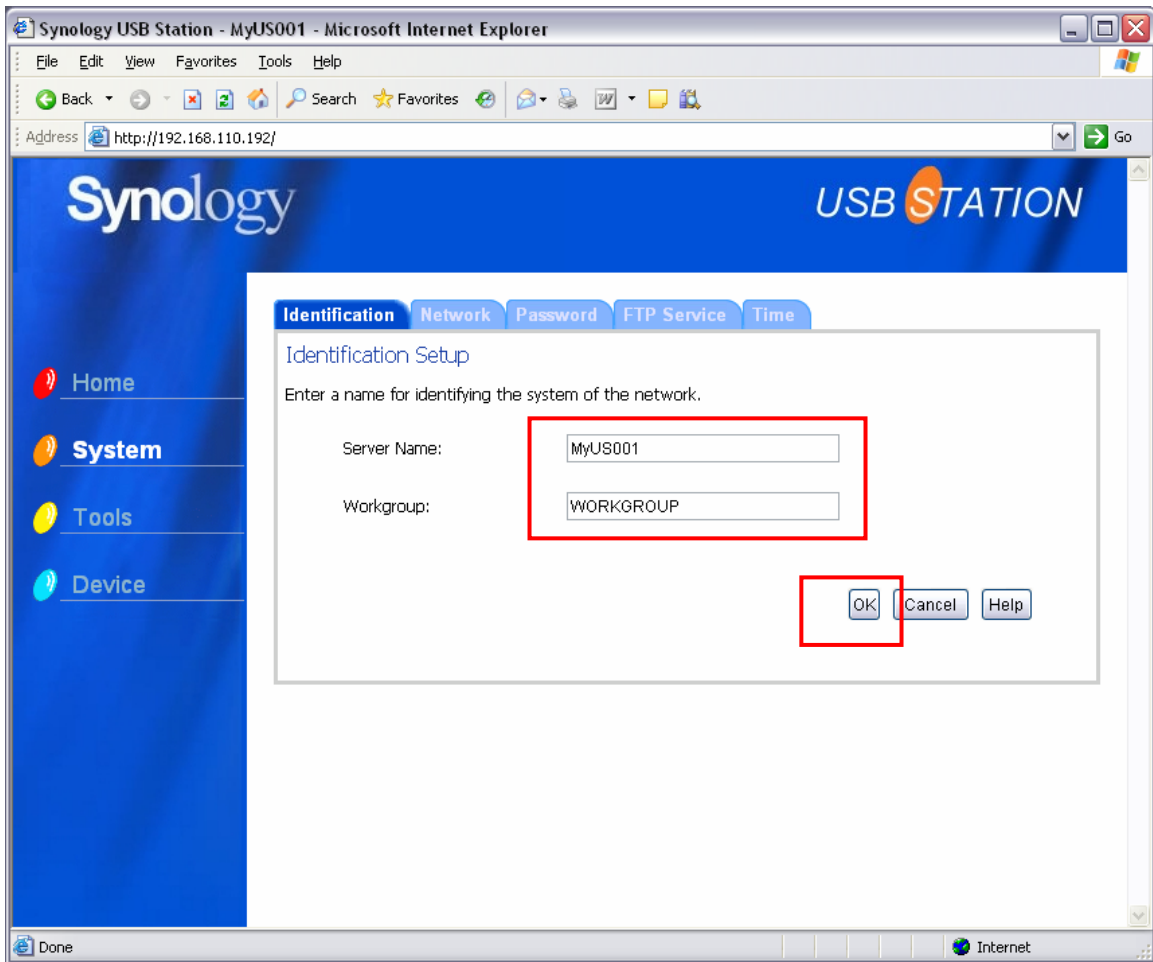


Identification

To change the server name or Workgroup name, enter the new value respectively in the “Server Name:” and “Workgroup:” fields, and click <OK>.

<<Notice>> The server name is not case-sensitive and can contain from 1 to 15 alphanumeric characters, which be letters, numbers, underscores or dashes. The first character must be a letter.

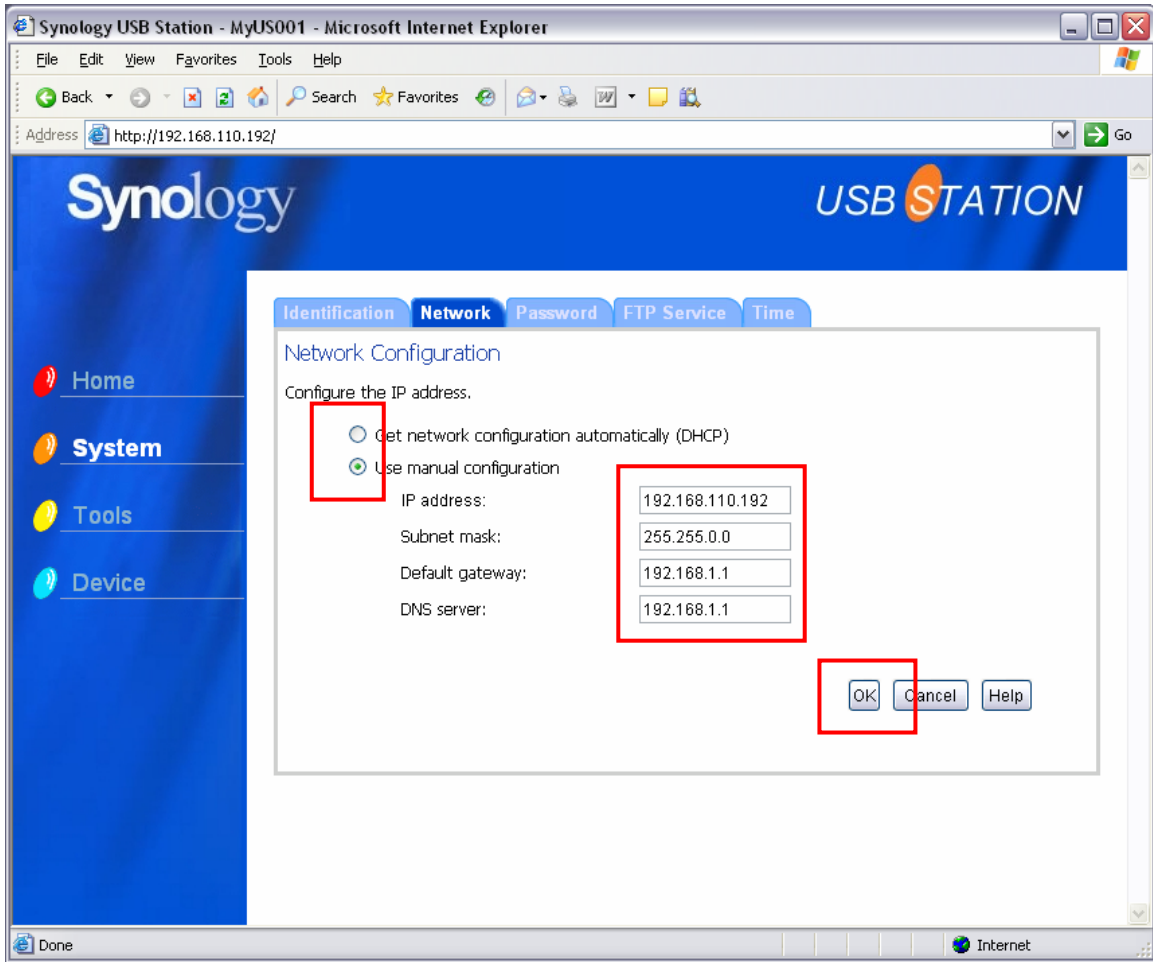
<<Notice>> The name of a Workgroup can contain from 1 to 15 characters. Invalid characters include: [] ; : " < > * + = \ / | ? ,



Network

If you need to change the network settings of **Synology USB Station**, follow the steps:

1. Select "Get network configuration automatically (DHCP)" or "Use manual configuration."
2. If you choose manual configuration, enter all related setting values.
3. Click <OK> to finish

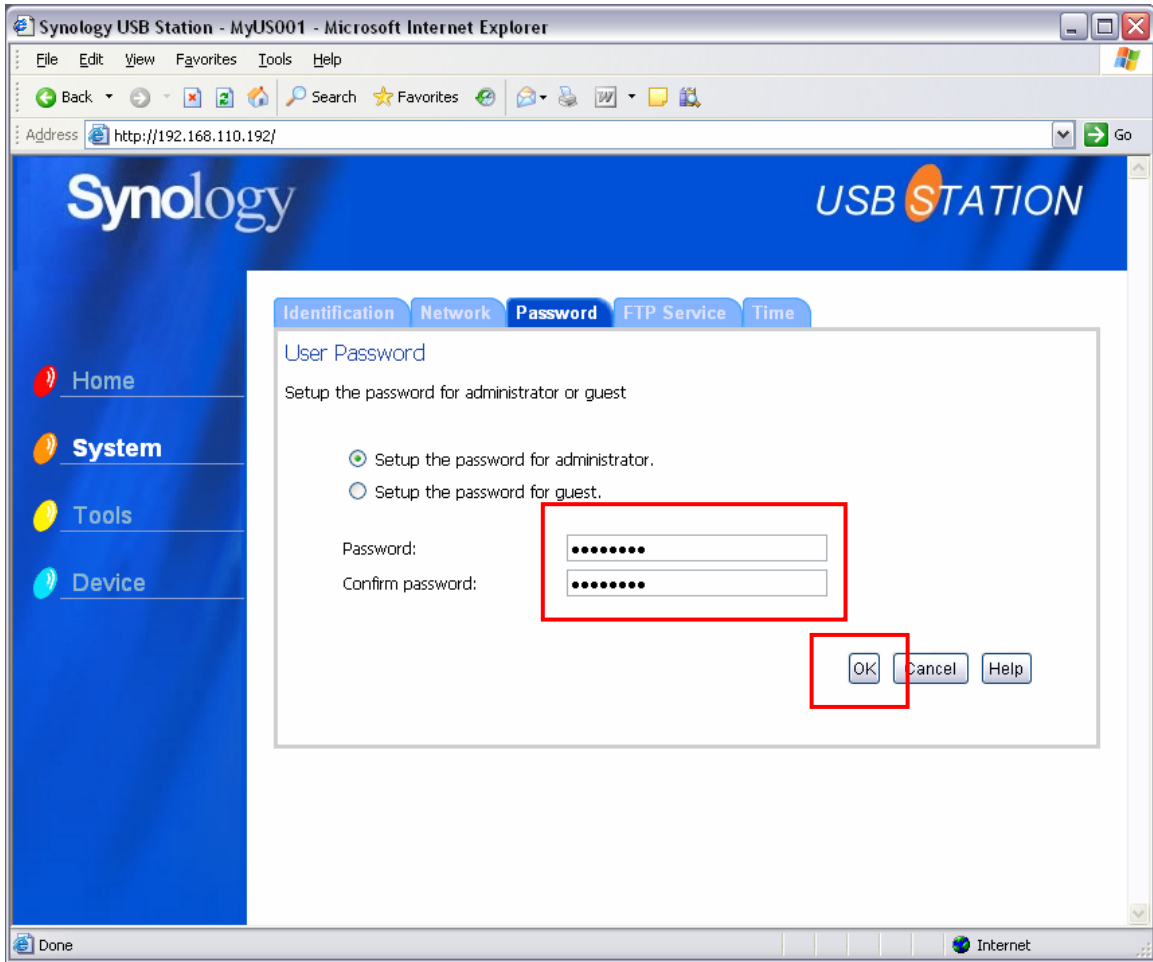


<<Notice>> If you choose the DHCP option, please make sure there is a working DHCP server on the network.

Password

To change password for the administrator or guess, follow the steps:

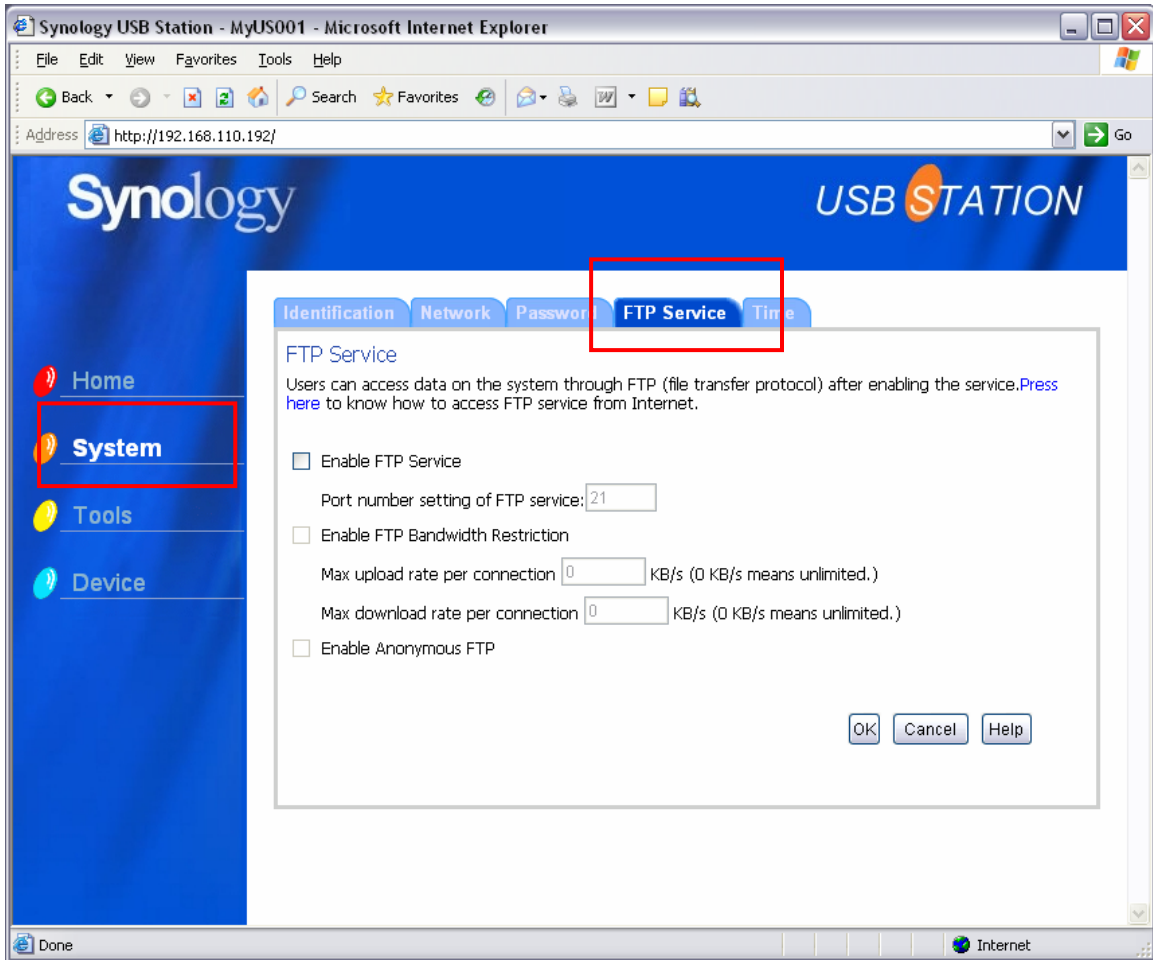
1. Choose the account to change password
2. Enter the new password in the "Password:" field
3. Enter the new password again in the "Confirm password:" field
4. Click <OK> to finish



<<Notice>>The password is case sensitive and can be empty or up to 12 characters, including letters, numbers, signs, and space.

Enable FTP Service

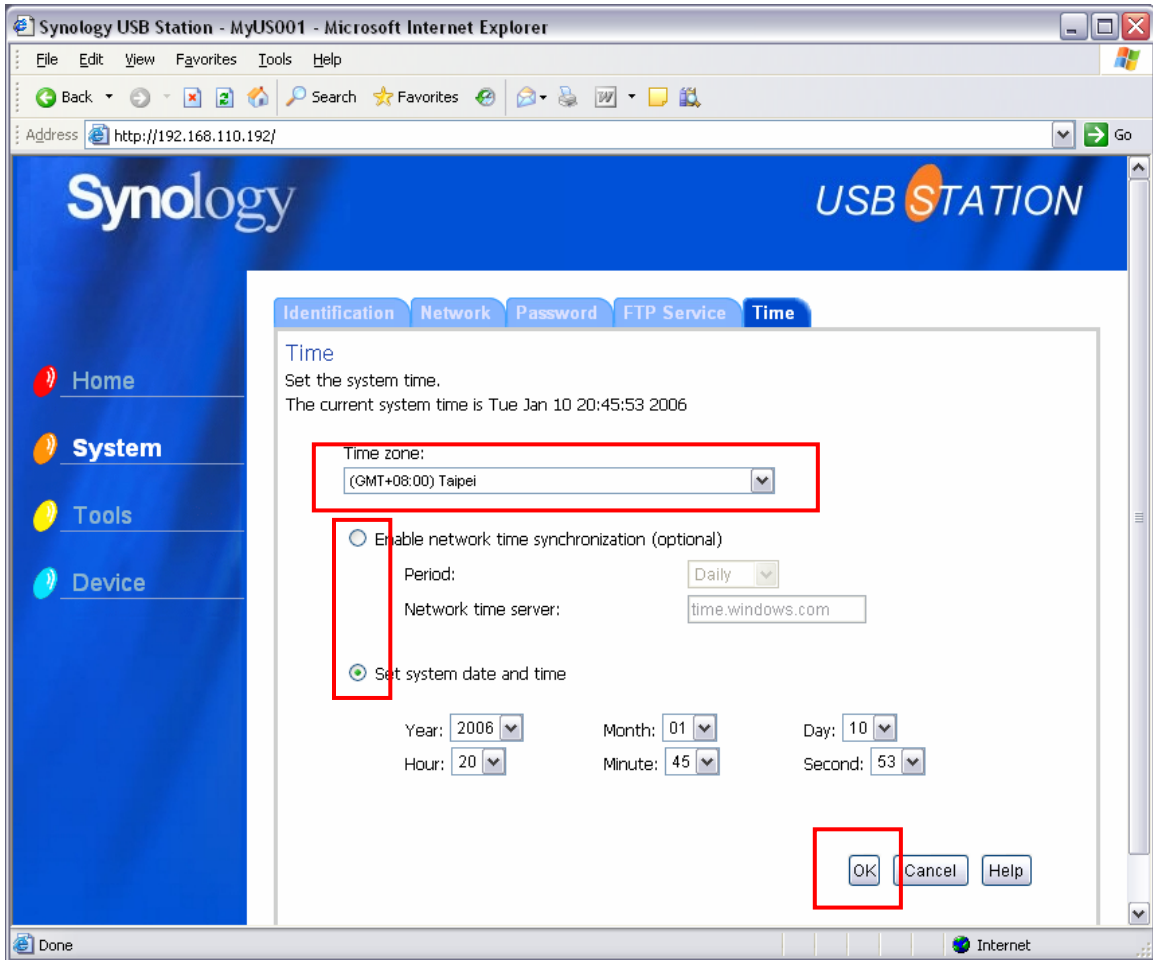
You can enable FTP service, set bandwidth restriction, or enable anonymous FTP on this page.



Time

You can setup the system time on this page either using automatic synchronization or manual setup.

1. Choose the time zone from the drop-down menu
2. Choose automatic synchronization or manual setup.
 - A. Automatic synchronization: Choose the option "Enable network time synchronization," select synchronization period from the "Period:" drop-down menu, and enter the IP address of the network time server.
 - B. Manual setup: Choose the option "Set system date and time:" and select the time from the drop-down menus under the option.
3. Click <OK> to finish.



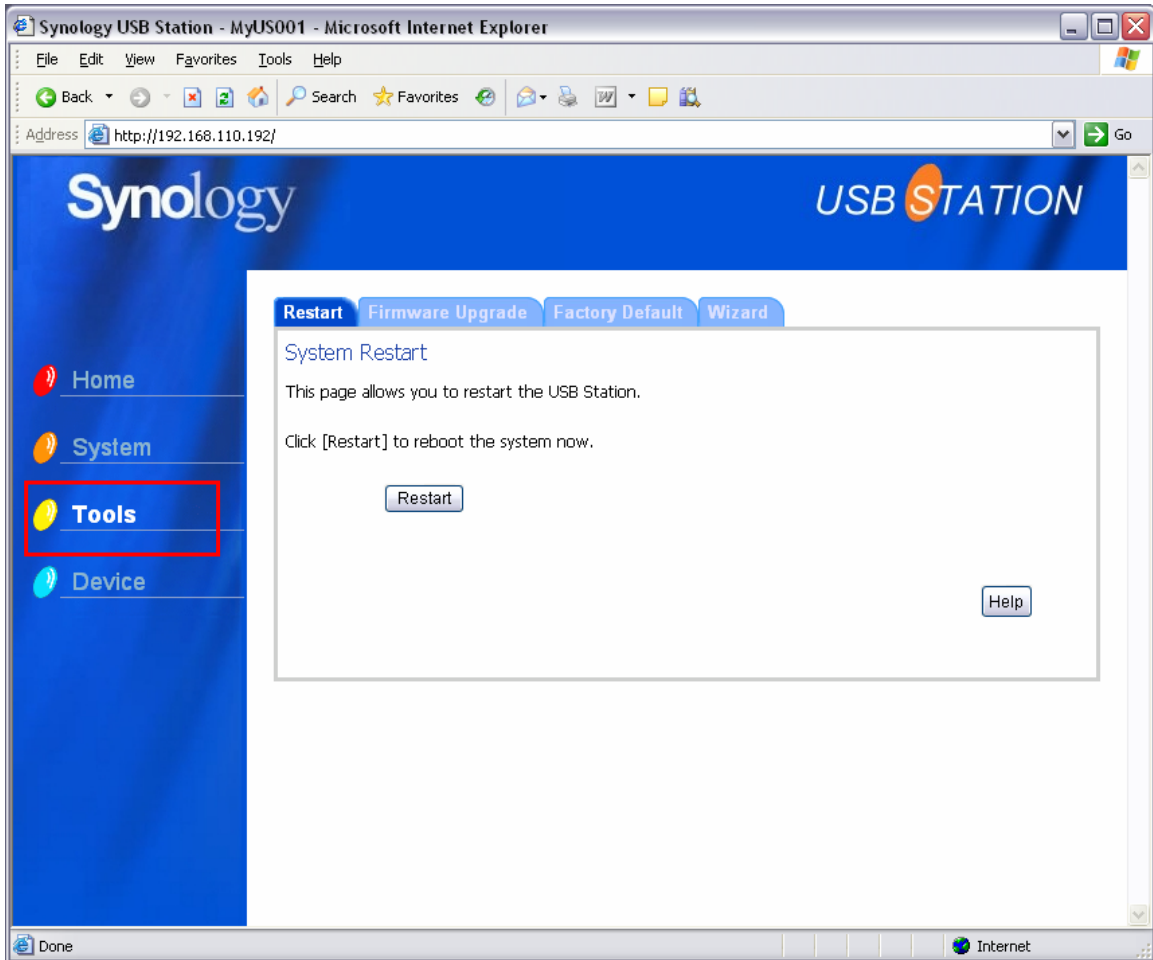
<<Notice>> The “Automatic synchronization” option uses Network Time Protocol (NTP) for **Synology USB Station** to synchronize time with the “network time servers” through Internet. NTP is a widely used Internet protocol; below are some suggested time servers:

- time.apple.com
- time.asia.apple.com
- time.euro.apple.com
- time.nist.gov
- time.windows.com

For more information please check <http://ntp.isc.org/bin/view/Servers/WebHome>

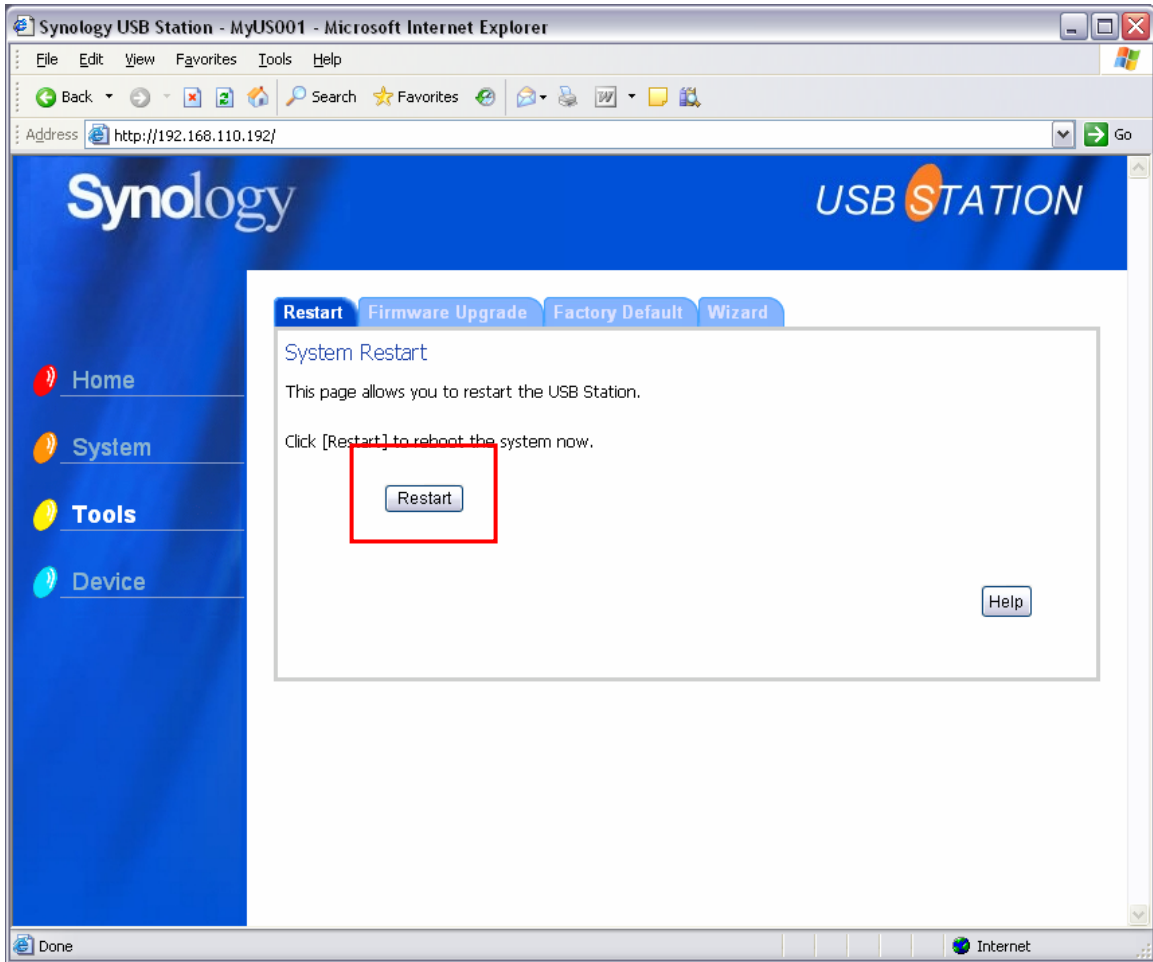
Tools

In the “Tools” section you can restart **Synology USB Station**, upgrade the firmware, reset the system to factory default, or reconfigure the system with the wizard.



Restart

If you need to restart the computer, click the <Restart> button.

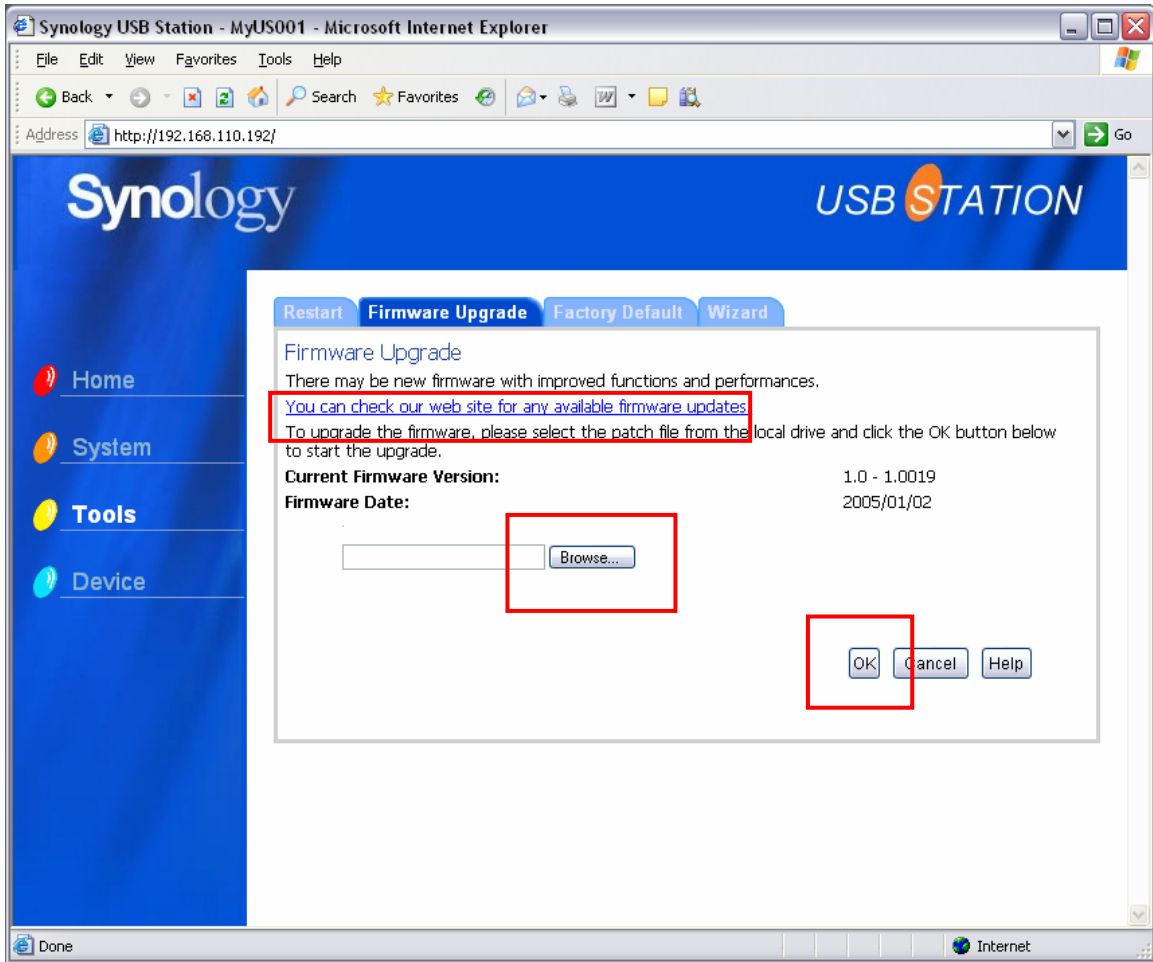


<<Notice>> If for any reason you need to shutdown **Synology USB Station**, be sure to eject the USB disk first (refer to “Device > Ejecting USB Disk“ section) and plug out the power cord.

Firmware Upgrade

You can click the firmware upgrade link to check if there is newer firmware of **Synology USB Station**. If a newer version is available, you can upgrade the firmware on this page.

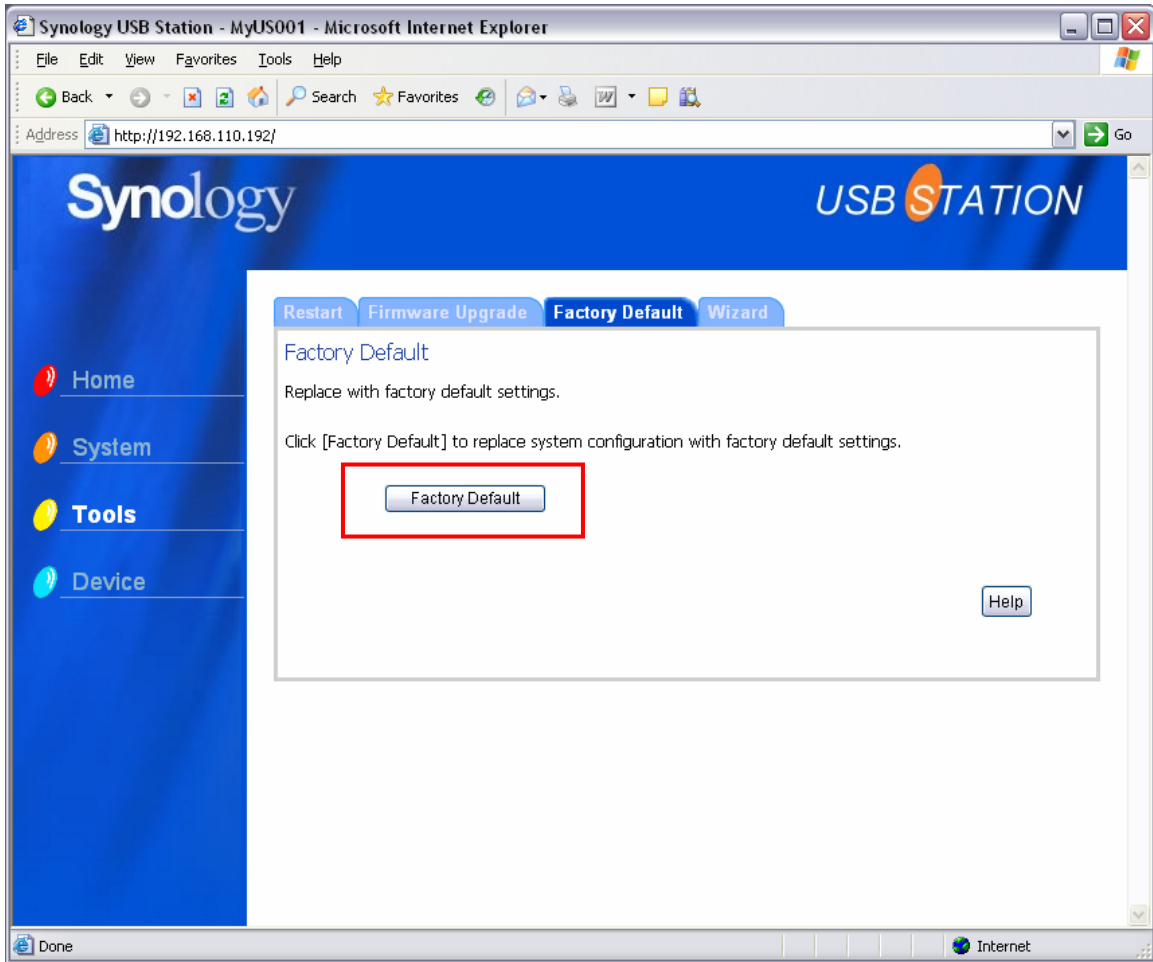
1. Download the firmware to your local computer
2. Click <Browse> and locate the downloaded file
3. Click <OK> to upgrade



<<Notice>> Before the page shows that the firmware upgrade is complete, please do not shutdown **Synology USB Station** or make any system changes on other pages.

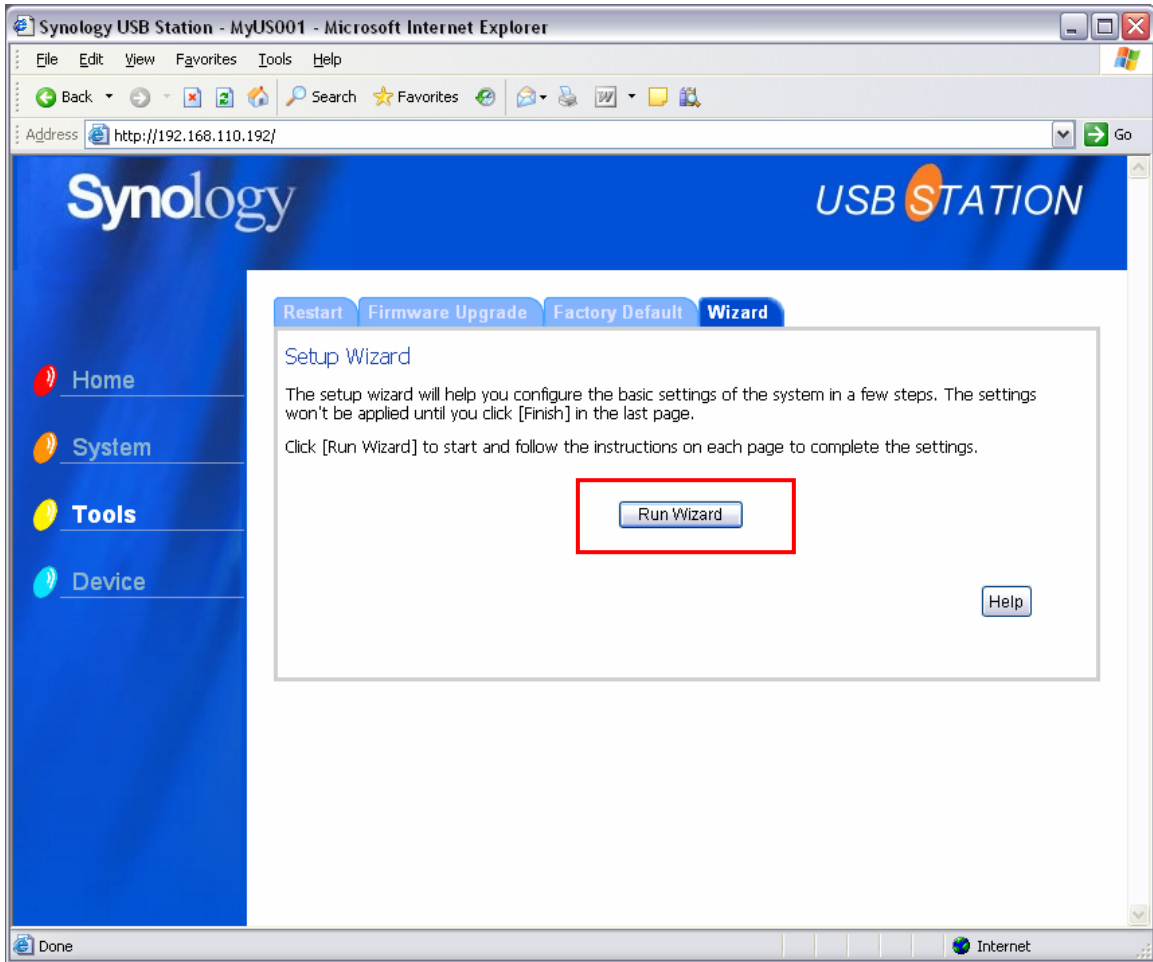
Factory Default

You can click the <Factory Default> button on this page to restore the system to its original status when you purchased it.



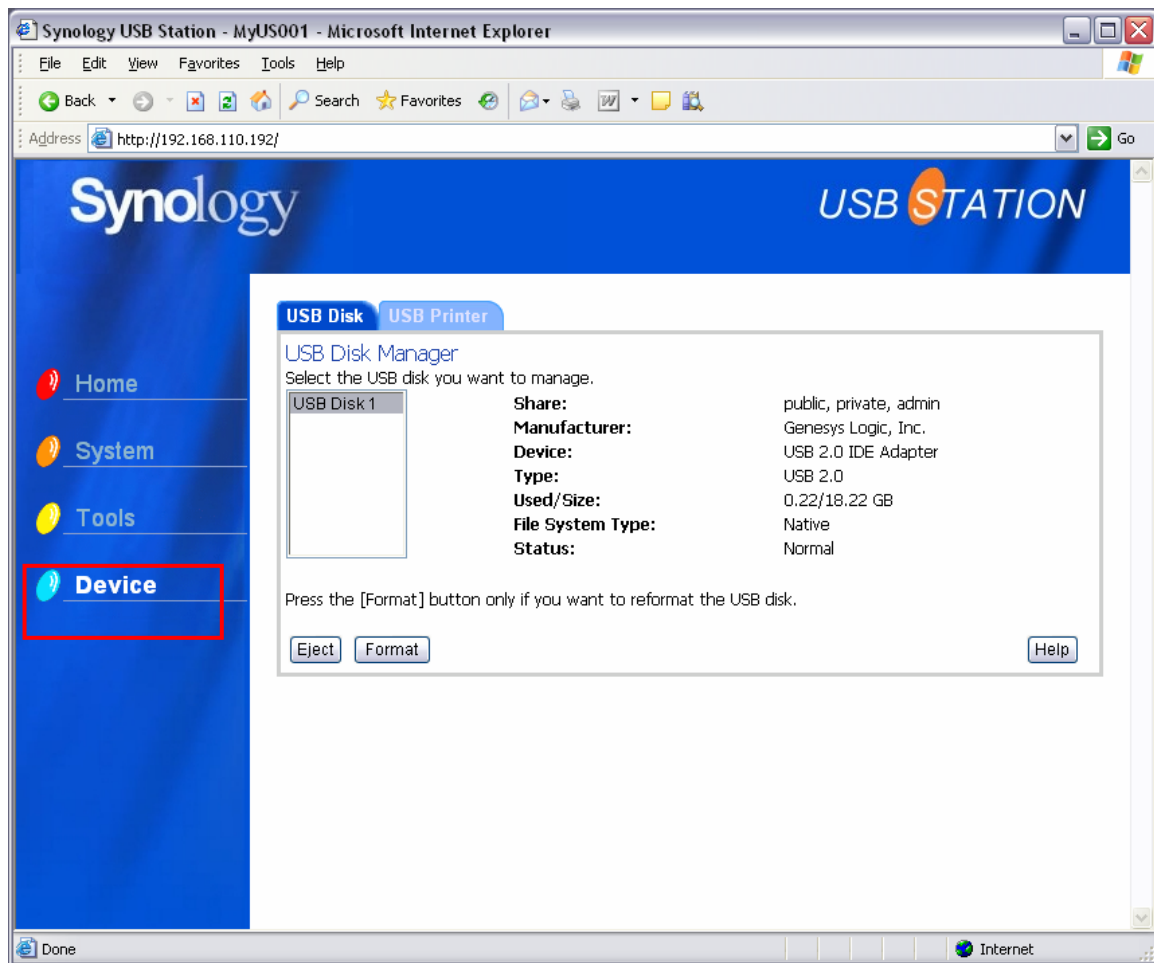
Wizard

Anytime you want to reconfigure the system with the setup wizard, you can click the <Run Wizard> button on this page and follow the steps to proceed.



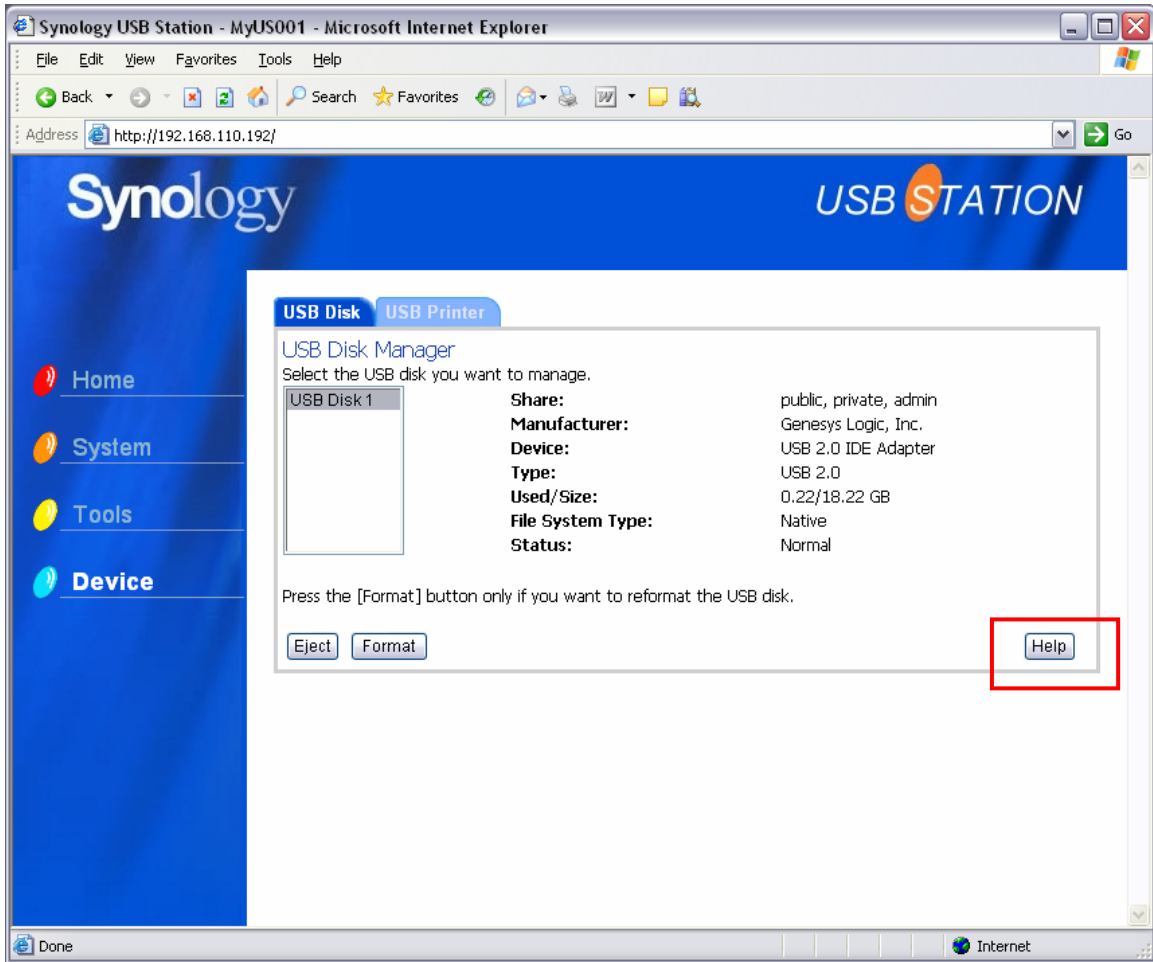
The setup procedures are the same as described in the “Quick Installation Guide” chapter, please refer to that chapter for details.

Device



Formatting USB Disk

After properly format the USB disk, you can share the storage over the network flexibly. Refer to the online help for details on the "Device > USB Disk" page of the management UI.



<<Notice>> After you format the USB disk, all data on it will be removed, please backup the data first before formatting it.

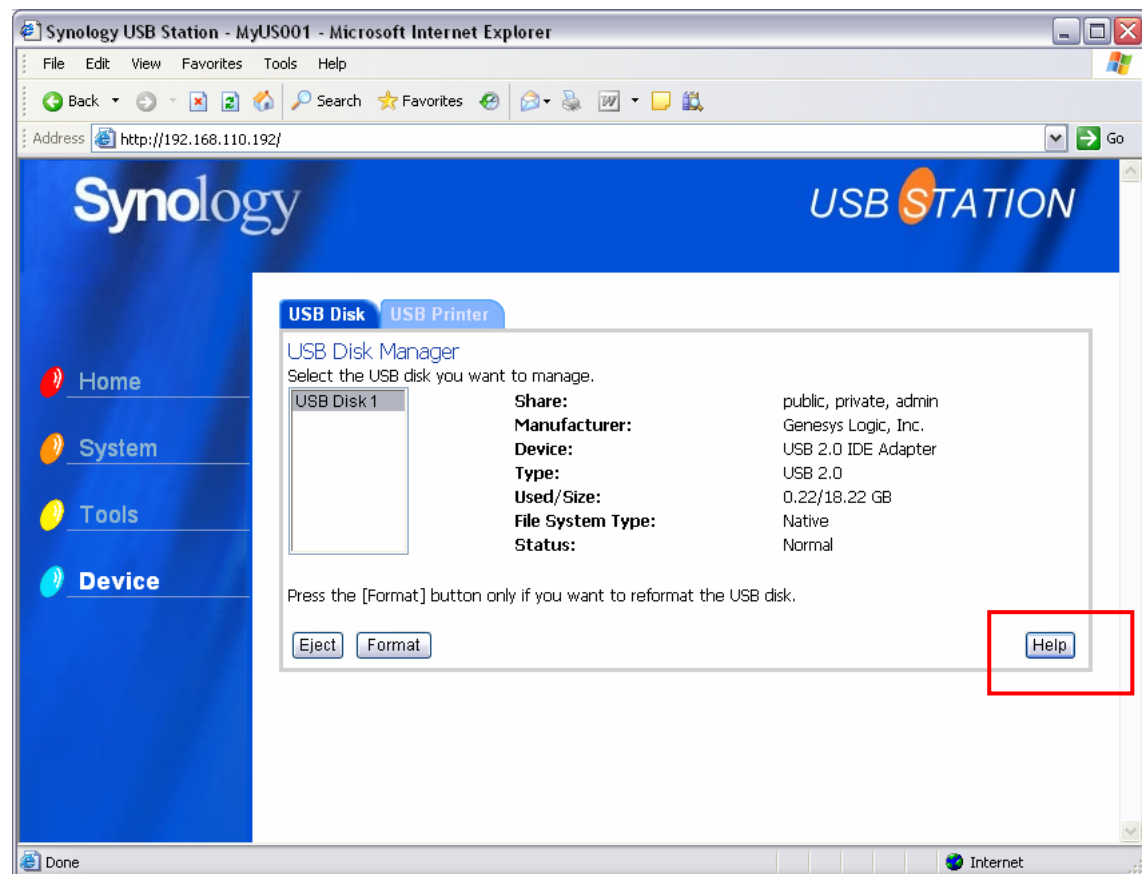
<<Notice>> During the formatting process, please do not shutdown the system.

Ejecting USB Disk

If you need to remove the USB disk from **Synology USB Station**, be sure to push the <Disconnect USB Disk> button or click the <Eject> button on this page, and remove the USB disk after the LED indicator of the disk stops flashing.

Accessing USB Disk

Refer to the online help on the “Device > USB Disk” page of the management UI to know the shared folders **Synology USB Station** creates automatically after a proper formatting of the USB disk, and how these shared folders can be used.



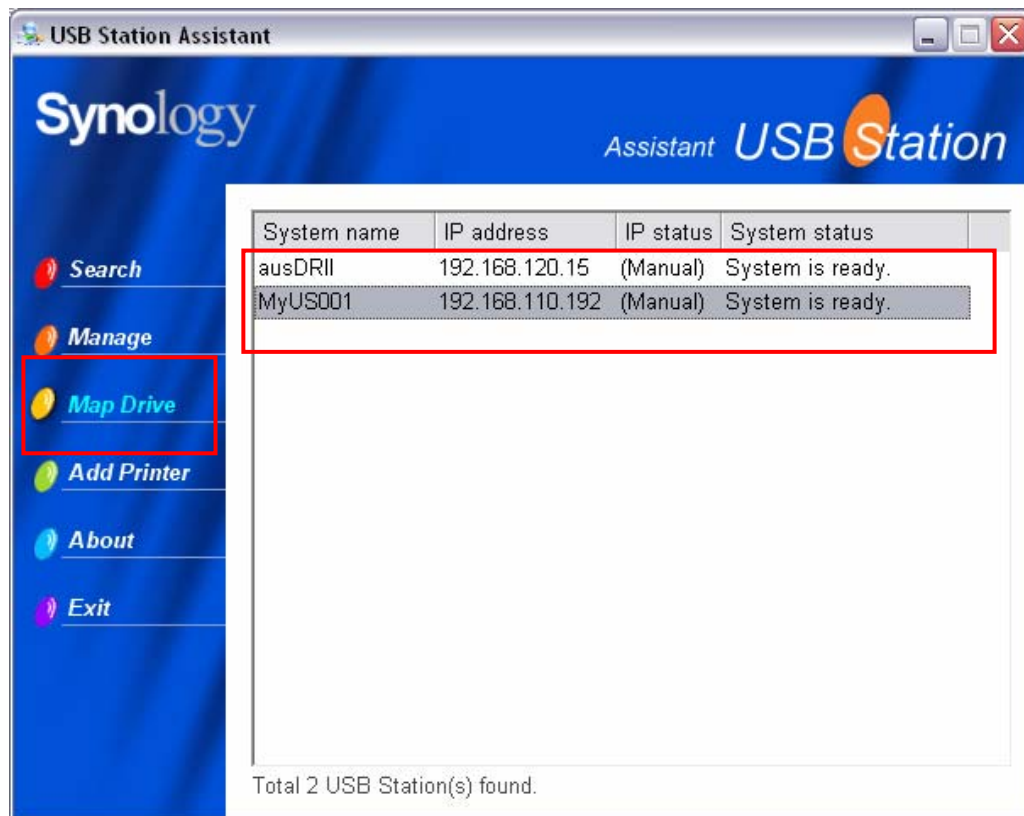
Windows User

Windows users can access the **Synology USB Station**'s shared folders by using Setup Utility to map Network Drive

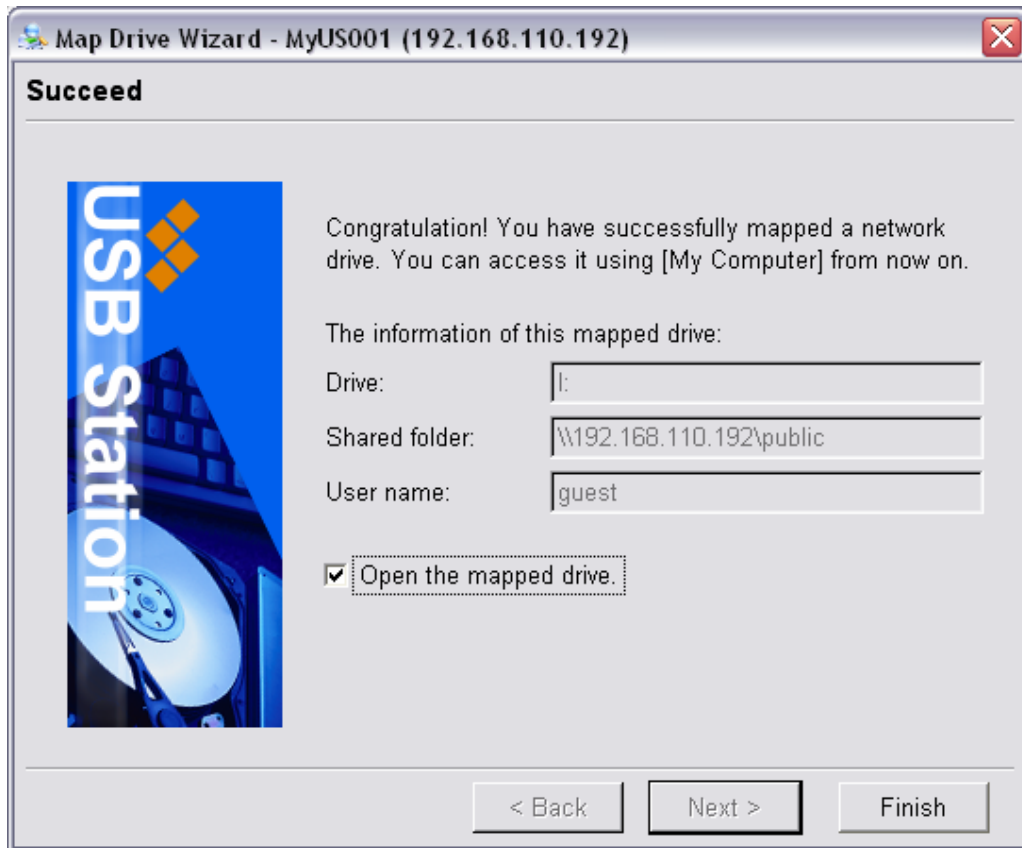
USB Station Assistant, which is included in the Installation CD, not only helps Administrator manage **Synology USB Station**, but also provides users with the following steps to map Network Drive:

1. Run USB Station Assistant.
2. Choose the **Synology USB Station** to map network drive.

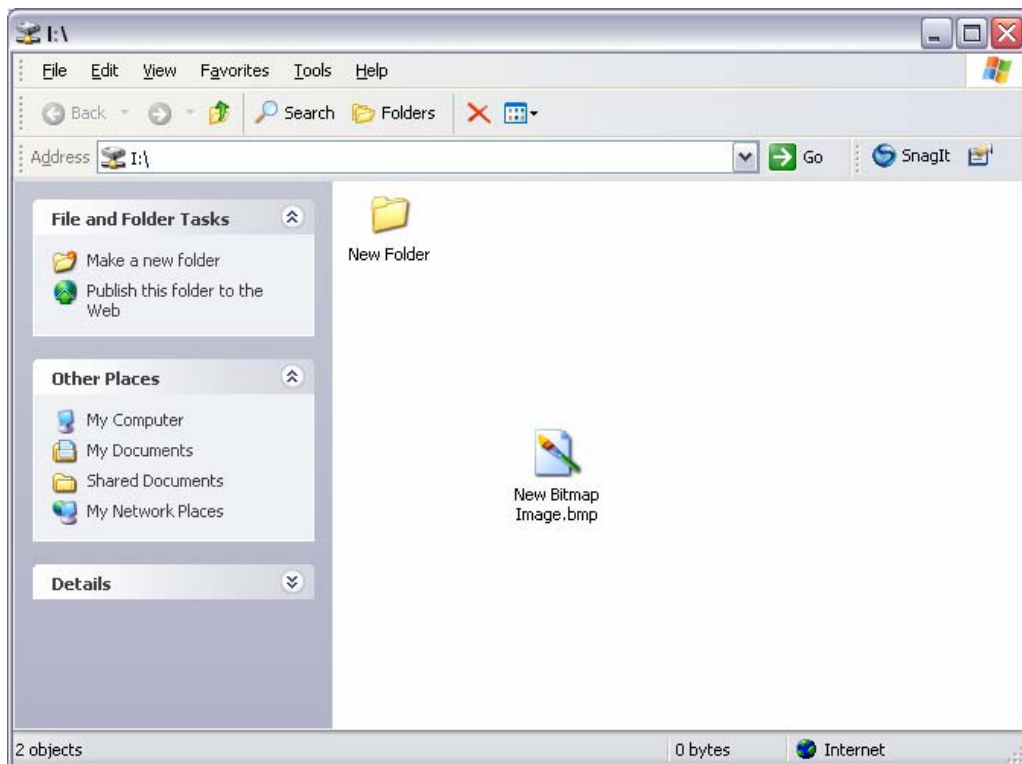
3. Click on the “Map Drive” button on the left.



4. Follow the on-screen steps to finish the setup.

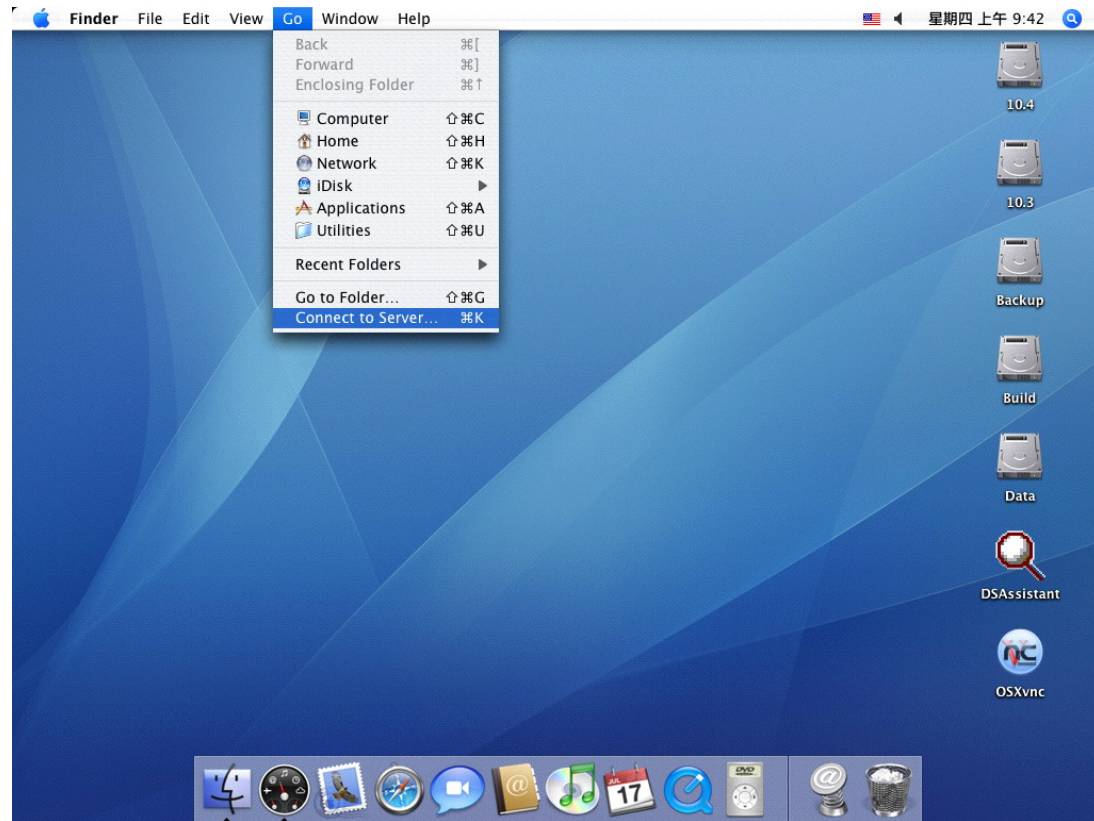


5. Upon completion, user can access the mapped shared folder in Windows Explorer.



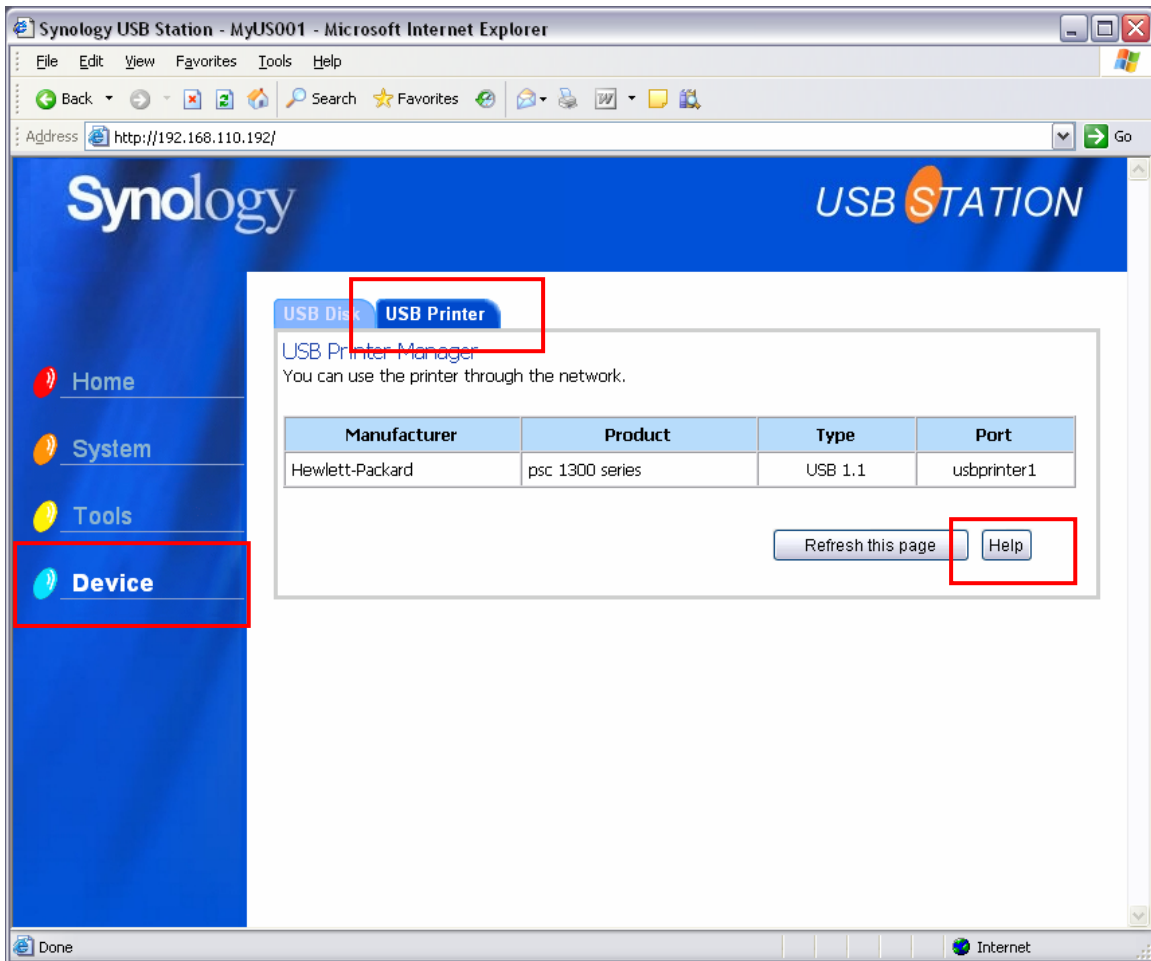
Mac User

Mac user can use "Go > Connect to Server" to choose a **Synology USB Station** and access the shared folder on the server.



Sharing USB Printer

Synology USB Station supports Windows 98 and above users, and Mac OS 9 and above users to share USB Printer. For the detailed settings on different platforms, please refer to the page “Device > USB Printer” of the Web Management UI.



PC Backup Solution

Windows users can install the backup application **Synology Data Replicator II** from the installation CD, and backup PC data to the shared folders on **Synology USB Station**, to help protect data from PC failure.

Using **Synology Data Replicator II**, users can:

1. Monitor PC folders and upload files to **Synology USB Station** upon file change.
2. Set versions and restore points to be uploaded.
3. Restore data from **Synology USB Station** whenever they need it.

Before Starting

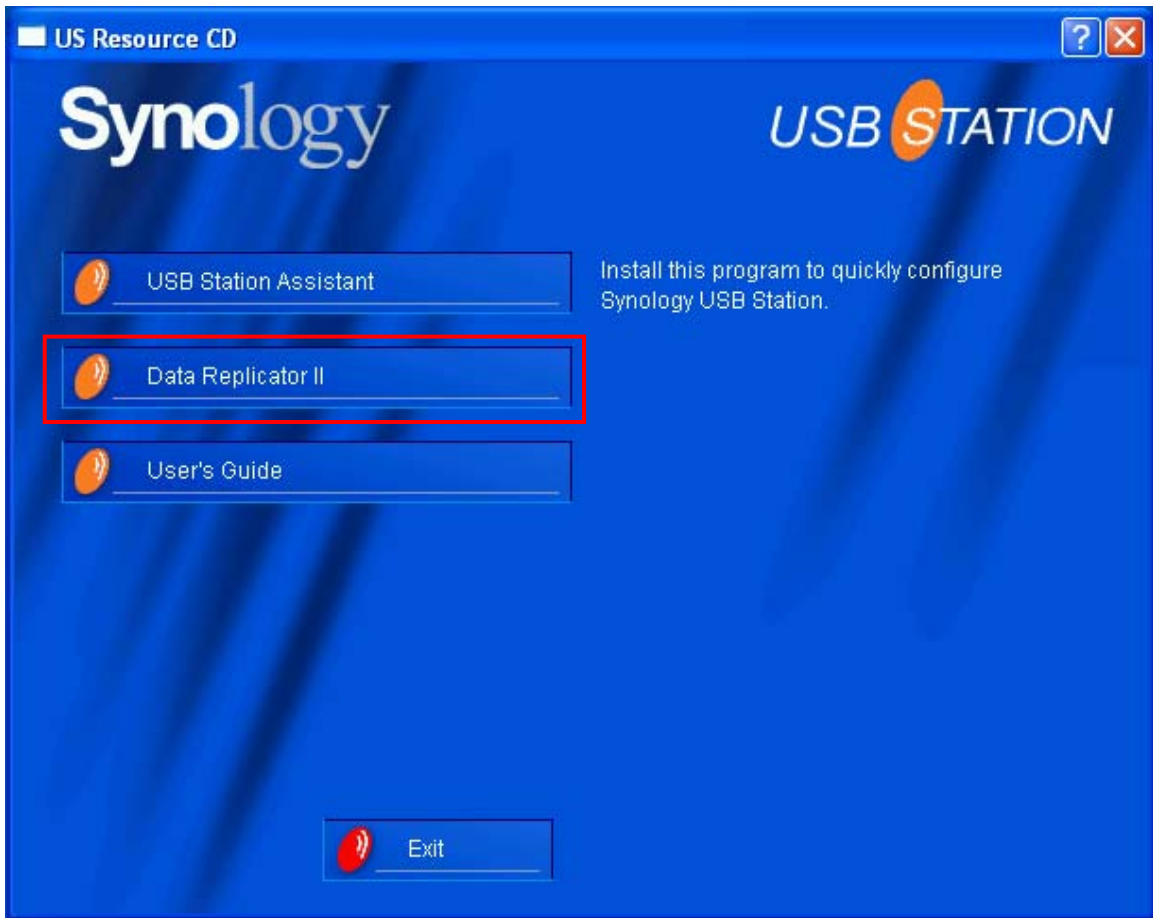
Before using **Synology Data Replicator II**, make sure Windows users use the same codepage as **Synology USB Station**. This will ensure that the backup works properly.

Basic PC Requirements

1. Disk space: 5MB
2. OS: Windows 98/ME/2000/XP
3. Monitor Resolution: 1024*768 or higher
4. Microsoft Networking over TCP/IP protocol is enabled, and the connection to **Synology USB Station** is established.

Installing Synology Data Replicator II

1. Insert the installation CD of **Synology USB Station** to Windows user's CD-ROM drive.
2. Click the **Synology Data Replicator II** button.
3. Follow the screen instructions to finish the installation.



Using Synology Data Replicator II

After the installation, click the program icon to open **Synology Data Replicator II**. For usage instruction, click the “Help” button.



Troubleshooting

Almost all problems of using Synology USB Station can be solved by referring to the “<<Notice>>” items throughout this user’s guide, however, if you still have problems that can’t be solved, please read the “Appendix>Support Information” for assistance information.

Appendix

Suggested Printers

The following printers have been tested to be compatible with **Synology USB Station**.

Brand	Model	Remark
BROTHER	DCP-110C	No scanner support)
	HL-1459	
	HL-2070	
	HL-5150D	
	MFC-8840D	No scanner or fax support
	QL-500	
CANON	i320	
	MP390	
	MP730	
	PIXMA iP1500	
	PIXMA iP3000	
	PIXMA MP110	
EPSON	CC-600PX	Printer function proved only.
	E-100	Printer function proved only.
	LP-1500C	
	LP-2500	
	LP-6100	
	LP-8800C	
	LP-9100	
	LP-9100PS3	
	PHOTO R310	
	PHOTO RX430	
	PM-3700C	
	PM-4000PX	
	PM-760C	
	PM-970C	
	PM-D750	Printer function proved only.
	PM-G700	
	PM-G800	
	PX-G900	
	PX-V500	
	PX-V600	
	Stylus C65	
	STYLUS CX3500	

Brand	Model	Remark
	Stylus Photo RX 600	
HP	DESKJET3845	
	DESKJET5160	
	DESKJET5650	
	DESKJET5850	
	LaserJet 2300n	Also supports Mac clients
	OFFICEJET4255	
	OFFICEJET5510	
	OFFICEJET6150	
	Photosmart 1100c	Also supports Mac clients
	Photosmart 7960	
	PSC1350	
	PSC2450	
	PSC2550	
KONICA MINOLTA	PagePro 1350W	
LEXMARK	Z35	
SAMSUNG	CLP-500	

You can also try other printers not listed above; however, we do not suggest that you use an All-in-Ones printer with **Synology USB Station**; printers with simple functions will be more compatible with **Synology USB Station**.

Support Information

For any questions about managing your **Synology USB Station**, please refer to the “Help” button at every page of the Web Management UI. For any questions other than that, please visit Synology Inc. website (www.synology.com) for further assistant.