

DrayTek

Vigor2912 Series

Dual-WAN Security Router



Quick Start Guide

V1.0

Vigor2912 Series Dual-WAN Security Router Quick Start Guide

Version: 1.0

Firmware Version: V3.7.1_RC4a

(For future update, please visit DrayTek web site)

Date: 20/06/2013

Copyright Information

Copyright Declarations

Copyright 2013 All rights reserved. This publication contains information that is protected by copyright. No part may be reproduced, transmitted, transcribed, stored in a retrieval system, or translated into any language without written permission from the copyright holders.

Trademarks

The following trademarks are used in this document:

- Microsoft is a registered trademark of Microsoft Corp.
- Windows, Windows 95, 98, Me, NT, 2000, XP, 7 and Explorer are trademarks of Microsoft Corp.
- Apple and Mac OS are registered trademarks of Apple Computer Inc.
- Other products may be trademarks or registered trademarks of their respective manufacturers.

Safety Instructions and Approval

Safety Instructions

- Read the installation guide thoroughly before you set up the router.
- The router is a complicated electronic unit that may be repaired only by authorized and qualified personnel. Do not try to open or repair the router yourself.
- Do not place the router in a damp or humid place, e.g. a bathroom.
- Do not stack the routers.
- The router should be used in a sheltered area, within a temperature range of +5 to +40 Celsius.
- Do not expose the router to direct sunlight or other heat sources. The housing and electronic components may be damaged by direct sunlight or heat sources.
- Do not deploy the cable for LAN connection outdoor to prevent electronic shock hazards.
- Keep the package out of reach of children.
- When you want to dispose of the router, please follow local regulations on conservation of the environment.

Warranty

We warrant to the original end user (purchaser) that the router will be free from any defects in workmanship or materials for a period of two (2) years from the date of purchase from the dealer. Please keep your purchase receipt in a safe place as it serves as proof of date of purchase. During the warranty period, and upon proof of purchase, should the product have indications of failure due to faulty workmanship and/or materials, we will, at our discretion, repair or replace the defective products or components, without charge for either parts or labor, to whatever extent we deem necessary to restore the product to proper operating condition. Any replacement will consist of a new or re-manufactured functionally equivalent product of equal value, and will be offered solely at our discretion. This warranty will not apply if the product is modified, misused, tampered with, damaged by an act of God, or subjected to abnormal working conditions. The warranty does not cover the bundled or licensed software of other vendors. Defects which do not significantly affect the usability of the product will not be covered by the warranty. We reserve the right to revise the manual and online documentation and to make changes from time to time in the contents hereof without obligation to notify any person of such revision or changes.

Be a Registered Owner

Web registration is preferred. You can register your Vigor router via <http://www.draytek.com>.

Firmware & Tools Updates

Due to the continuous evolution of DrayTek technology, all routers will be regularly upgraded. Please consult the DrayTek web site for more information on newest firmware, tools and documents.

<http://www.draytek.com>

European Community Declarations

Manufacturer: DrayTek Corp.
Address: No. 26, Fu Shing Road, Hukou Township, Hsinchu Industrial Park, Hsinchu County,
Taiwan 303
Product: Vigor2912 Series Router

DrayTek Corp. declares that Vigor2912 Series of routers are in compliance with the following essential requirements and other relevant provisions of R&TTE 1999/5/EC, ErP 2009/125/EC and RoHS 2011/65/EU.

The product conforms to the requirements of Electro-Magnetic Compatibility (EMC) Directive 2004/108/EEC by complying with the requirements set forth in EN55022/Class B and EN55024/Class B.

The product conforms to the requirements of Low Voltage (LVD) Directive 2006/95/EC by complying with the requirements set forth in EN60950-1.

Regulatory Information

Federal Communication Commission Interference Statement

This equipment has been tested and found to comply with the limits for a Class B digital device, pursuant to Part 15 of the FCC Rules. These limits are designed to provide reasonable protection against harmful interference in a residential installation. This equipment generates, uses and can radiate radio frequency energy and, if not installed and used in accordance with the instructions, may cause harmful interference to radio communications. However, there is no guarantee that interference will not occur in a particular installation. If this equipment does cause harmful interference to radio or television reception, which can be determined by turning the equipment off and on, the user is encouraged to try to correct the interference by one of the following measures:

- Reorient or relocate the receiving antenna.
- Increase the separation between the equipment and receiver.
- Connect the equipment into an outlet on a circuit different from that to which the receiver is connected.
- Consult the dealer or an experienced radio/TV technician for help.

This device complies with Part 15 of the FCC Rules. Operation is subject to the following two conditions:

- (1) This device may not cause harmful interference, and
- (2) This device may accept any interference received, including interference that may cause undesired operation.

Please visit <http://www.draytek.com/user/SupportDLRTTECE.php>



This product is designed for the 2.4GHz WLAN network throughout the EC region.

Table of Contents

1. Introduction	1
1.1 Panel Explanation	2
1.1.1 For Vigor2912	2
1.1.2 For Vigor2912n	4
1.2 Package Content	6
2. Installing Your Router	7
2.1 Hardware Installation	7
2.2 Printer Installation.....	8
3. Initial Settings	15
3.1 Accessing Web Page	15
3.2 Basic Configuration – Quick Start Wizard	16
3.2.1 For WAN1/WAN2	18
3.2.2 For WAN3 (USB).....	26
3.3 Wireless Configuration	28
3.3.1 Basic Wireless LAN Concept	28
3.3.2 General Setup	29
3.3.3 Security Settings	30
4. Trouble Shooting.....	33
4.1 Checking If the Hardware Status Is OK or Not.....	33
4.2 Checking If the Network Connection Settings on Your Computer Is OK or Not.....	34
4.3 Pinging the Router from Your Computer	37
4.4 Checking If the ISP Settings are OK or Not	38
4.5 Backing to Factory Default Setting If Necessary.....	38
4.6 Contacting Your Dealer	40

1. Introduction

Vigor2912 series is a broadband router which integrates IP layer QoS, NAT session/bandwidth management to help users control works well with large bandwidth.

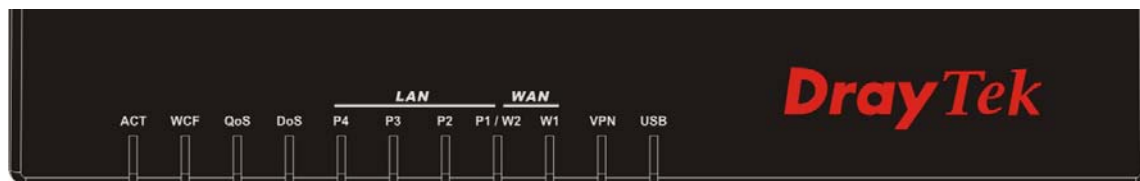
By adopting hardware-based VPN platform and hardware encryption of AES/DES/3DES, and hardware key hash of SHA-1/MD5, the router increases the performance of VPN greatly and offers several protocols (such as IPSec/PPTP/L2TP) with up to 16 VPN tunnels.

The object-based design used in SPI (Stateful Packet Inspection) firewall allows users to set firewall policy with ease. CSM (Content Security Management) provides users control and management in IM (Instant Messenger) and P2P (Peer to Peer) more efficiency than before. In addition, DoS/DDoS prevention and URL/Web content filter strengthen the security outside and control inside.

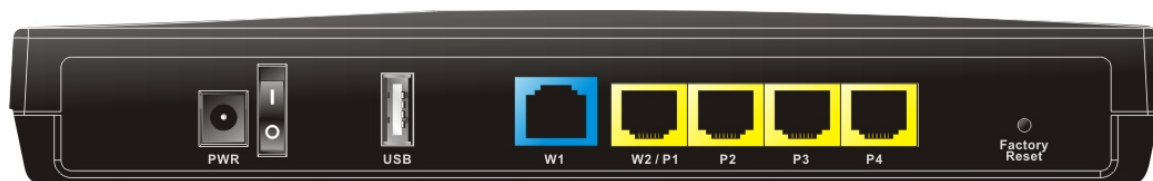
Vigor2912 series supports USB interface for connecting USB printer to share printing function, 3G USB modem for network connection, or connectivity for network FTP service.

1.1 Panel Explanation

1.1.1 For Vigor2912

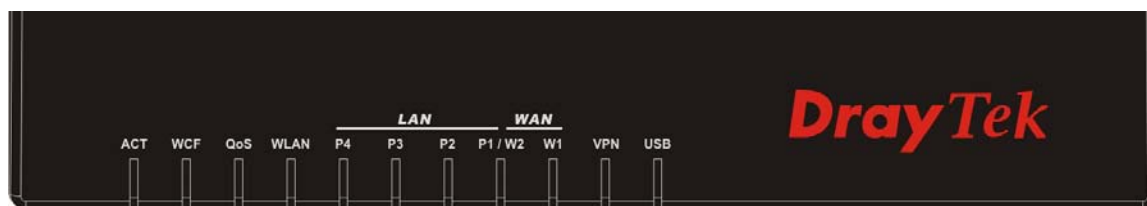


LED	Status	Explanation
ACT (Activity)	Blinking	The router is powered on and running normally.
	Off	The router is powered off.
WCF	On	The Web Content Filter is active. (It is enabled from Firewall >> General Setup).
	Off	The Web Content Filter is inactive.
QoS	On	The QoS function is active.
	Off	The QoS function is inactive.
DoS	On	The DoS/DDoS function is active.
	Blinking	It will blink while detecting an attack.
LAN (P4~P1)	On	The port is connected.
	Off	The port is disconnected.
	Blinking	The data is transmitting.
WAN(W2~W1)	On	Internet connection is ready.
	Off	Internet connection is not ready.
	Blinking	The data is transmitting.
VPN	On	The VPN tunnel is active.
USB	On	USB device is connected and ready for use.
	Blinking	The data is transmitting.

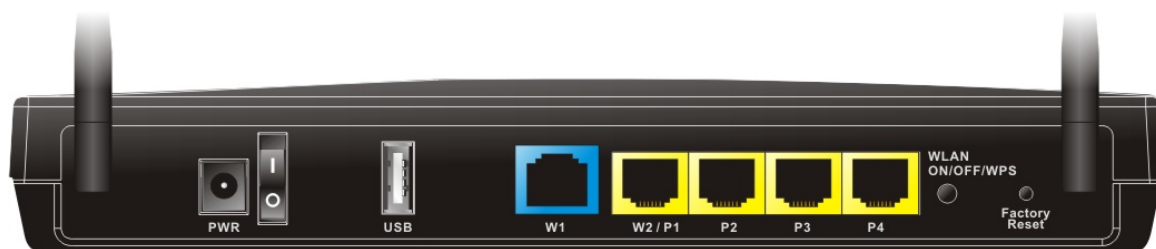


Interface	Description
PWR	Connector for a power adapter.
ON/OFF	Power Switch.
USB	Connector for a USB device (for 3G USB Modem or printer).
W1~W2/P1	Connector an ADSL or cable modem for accessing Internet (WAN).
W2/P1~P4	Connecters for local network devices (LAN).
Factory Reset	Restore the default settings. Usage: Turn on the router (ACT LED is blinking). Press the hole and keep for more than 5 seconds. When you see the ACT LED begins to blink rapidly than usual, release the button. Then the router will restart with the factory default configuration.

1.1.2 For Vigor2912n

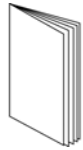


LED	Status	Explanation
ACT (Activity)	Blinking	The router is powered on and running normally.
	Off	The router is powered off.
WCF	On	The Web Content Filter is active. (It is enabled from Firewall >> General Setup).
	Off	The Web Content Filter is inactive.
QoS	On	The QoS function is active.
	Off	The QoS function is inactive.
WLAN	On	Wireless access point is ready.
	Blinking	It will blink slowly while wireless traffic goes through. ACT and WLAN LEDs blink quickly and simultaneously when WPS is working, and will return to normal condition after two minutes. (You need to setup WPS within 2 minutes.)
LAN (P4~P1)	On	The port is connected.
	Off	The port is disconnected.
	Blinking	The data is transmitting.
WAN(W2~W1)	On	Internet connection is ready.
	Off	Internet connection is not ready.
	Blinking	The data is transmitting.
VPN	On	The VPN tunnel is active.
USB	On	USB device is connected and ready for use.
	Blinking	The data is transmitting.

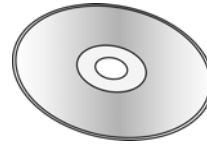


Interface	Description
PWR	Connector for a power adapter.
ON/OFF	Power Switch.
USB	Connector for a USB device (for 3G USB Modem or printer).
W1~W2/P1	Connector for local network devices or modem for accessing Internet (WAN).
W2/P1~P4	Connectors for local network devices (LAN).
Wireless LAN ON/OFF/WPS	Press "Wireless LAN ON/OFF/WPS" button once to wait for client device making network connection through WPS. Press "Wireless LAN ON/OFF/WPS" button twice to enable (WLAN LED on) or disable (WLAN LED off) wireless connection.
Factory Reset	Restore the default settings. Usage: Turn on the router (ACT LED is blinking). Press the hole and keep for more than 5 seconds. When you see the ACT LED begins to blink rapidly than usual, release the button. Then the router will restart with the factory default configuration.

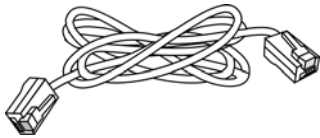
1.2 Package Content



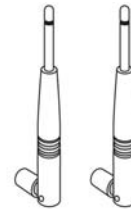
1 Quick Start Guide



2 CD

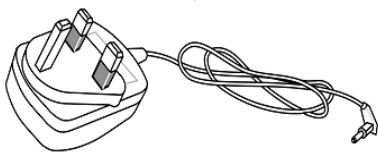


3 RJ-45 Cable (Ethernet)

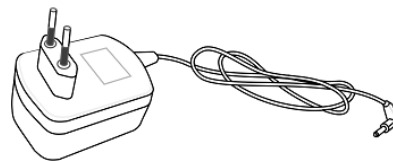


4 Antenna (n models)

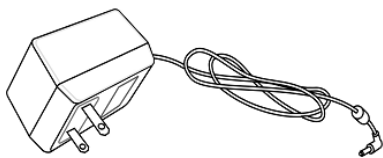
5 The type of the power adapter depends on the country that the router will be installed:



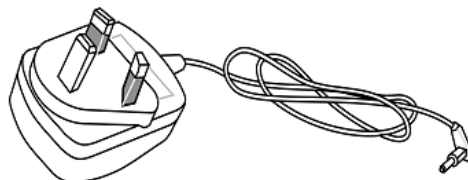
UK-type Power Adapter



EU-type Power Adapter



USA/Taiwan-type Power Adapter



AU/NZ-type Power Adapter

* The maximum power consumption is **24 Watt**.

2. Installing Your Router

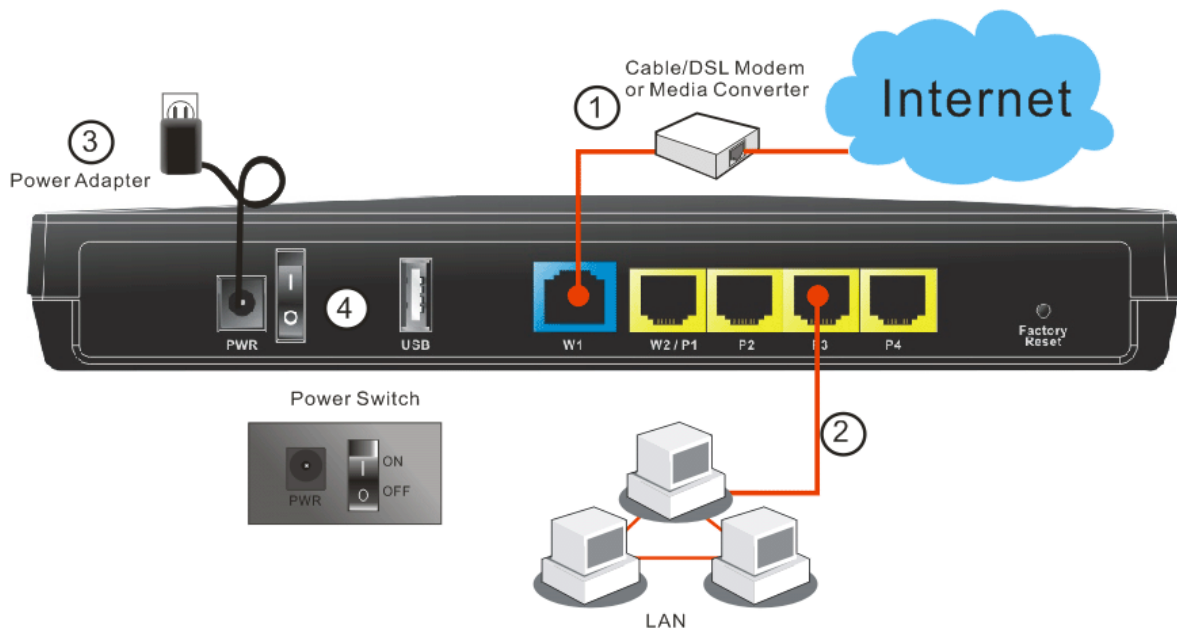
This section will guide you to install the router through hardware connection and configure the router's settings through web browser.

2.1 Hardware Installation

Before starting to configure the router, you have to connect your devices correctly.

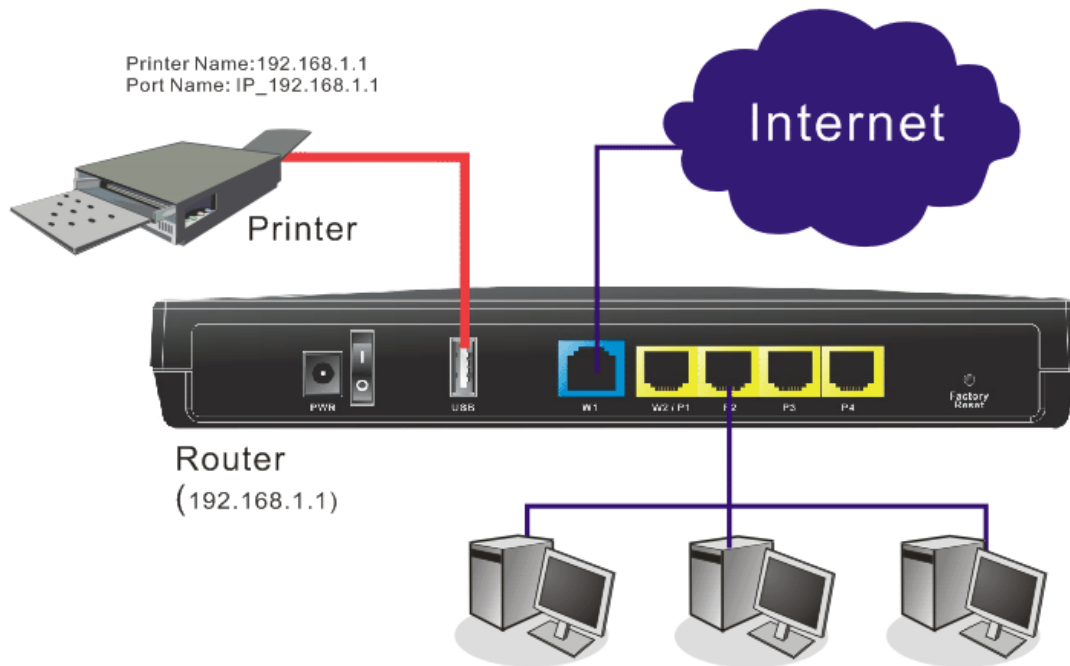
1. Connect the cable Modem/DSL Modem/Media Converter to any WAN port of router with Ethernet cable (RJ-45).
2. Connect one end of an Ethernet cable (RJ-45) to one of the LAN ports of the router and the other end of the cable (RJ-45) into the Ethernet port on your computer.
3. Connect one end of the power adapter to the router's power port on the rear panel, and the other side into a wall outlet.
4. Power on the device by pressing down the power switch on the rear panel.
5. The system starts to initiate. After completing the system test, the **ACT** LED will light up and start blinking.

(For the detailed information of LED status, please refer to section 1.1.)



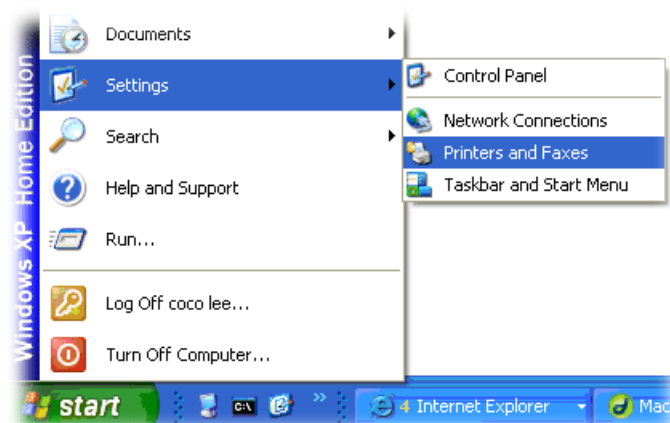
2.2 Printer Installation

You can install a printer onto the router for sharing printing. All the PCs connected this router can print documents via the router. The example provided here is made based on Windows XP/2000. For Windows 98/SE/Vista, please visit www.draytek.com.

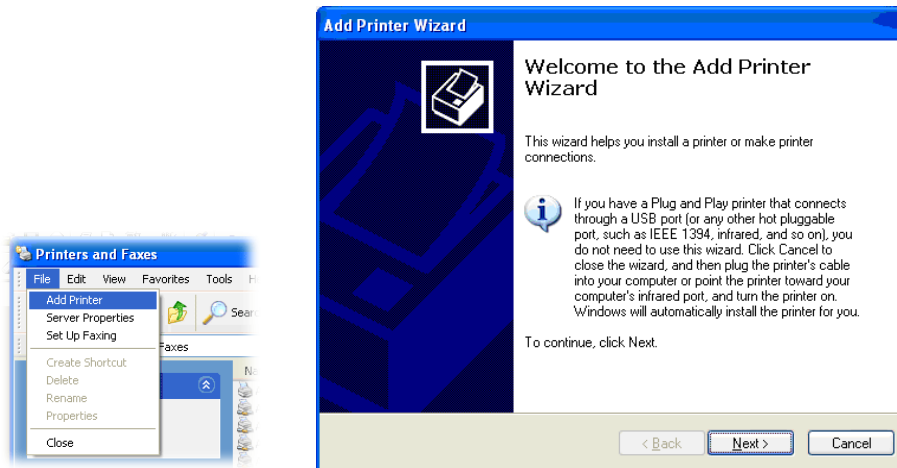


Before using it, please follow the steps below to configure settings for connected computers (or wireless clients).

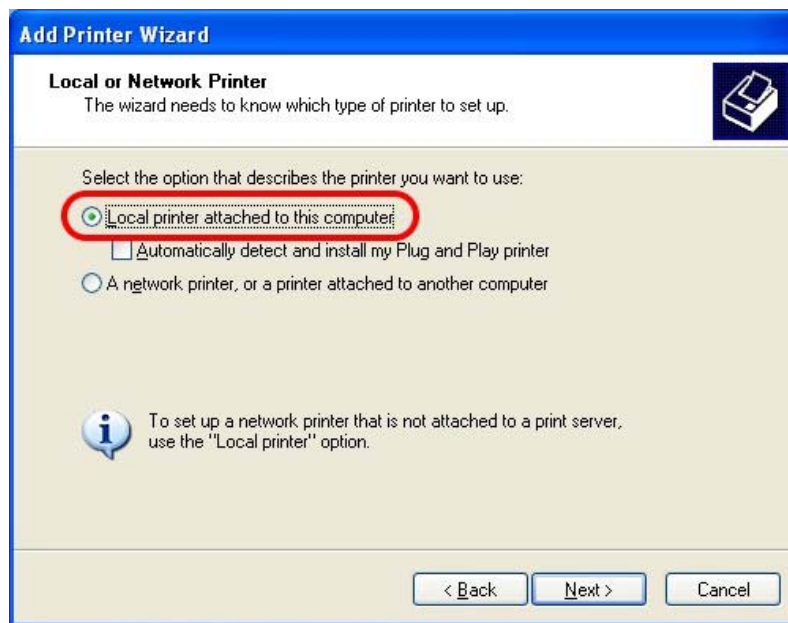
1. Connect the printer with the router through USB port.
2. Open **Start->Settings-> Printers and Faxes**.



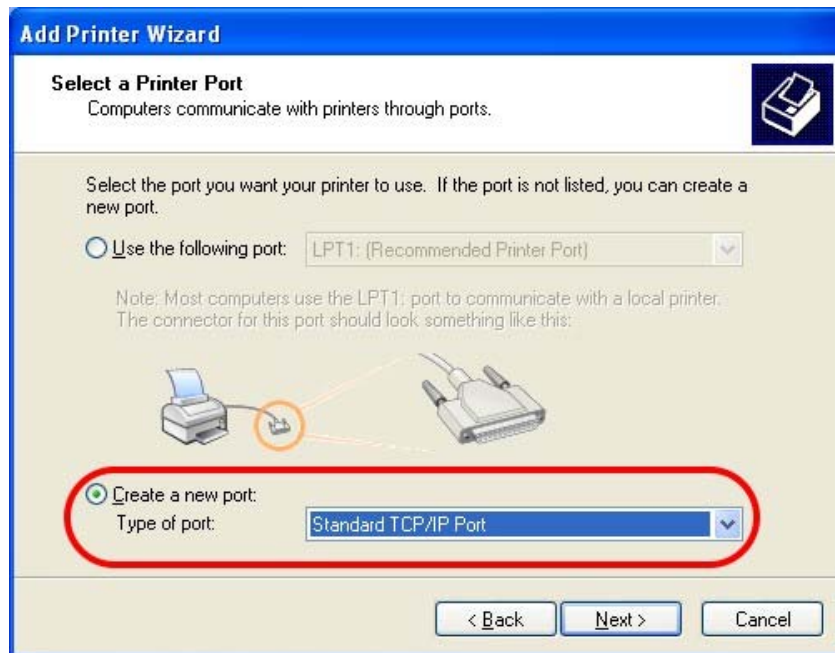
3. Open **File->Add a New Computer**. A welcome dialog will appear. Please click **Next**.



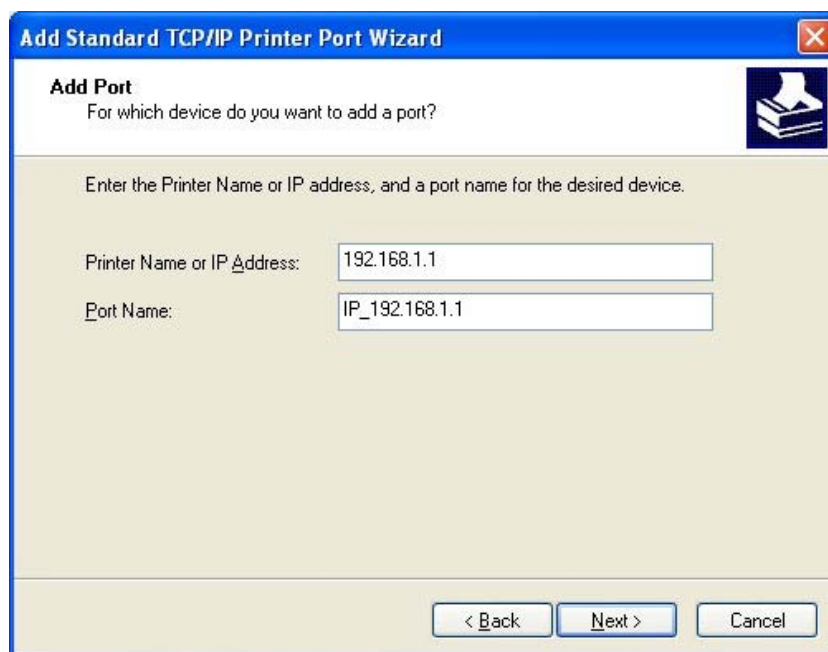
4. Click Local printer attached to this computer and click **Next**.



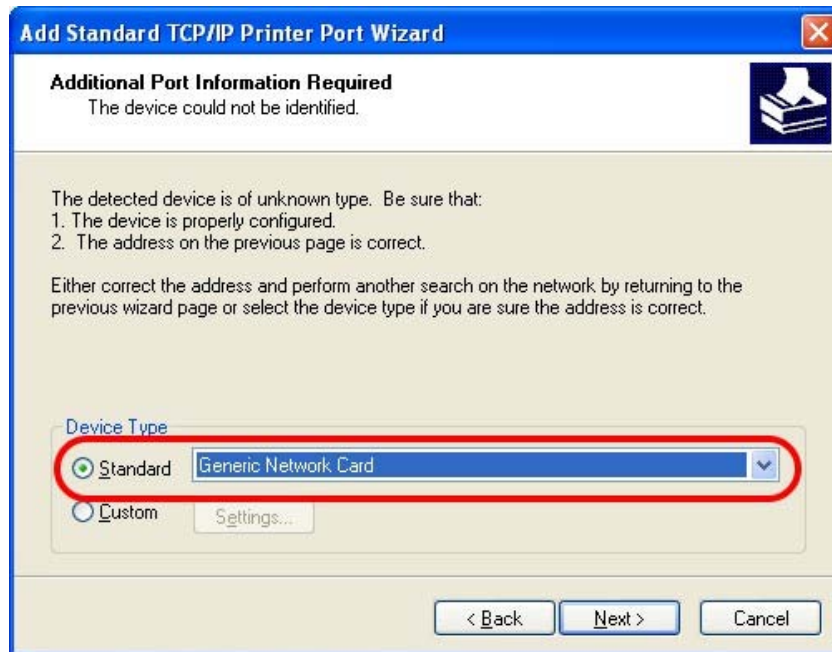
5. In this dialog, choose **Create a new port** **Type of port** and use the drop down list to select **Standard TCP/IP Port**. Click **Next**.



6. In the following dialog, type **192.168.1.1** (router's LAN IP) in the field of **Printer Name or IP Address** and type **IP_192.168.1.1** as the port name. Then, click **Next**.



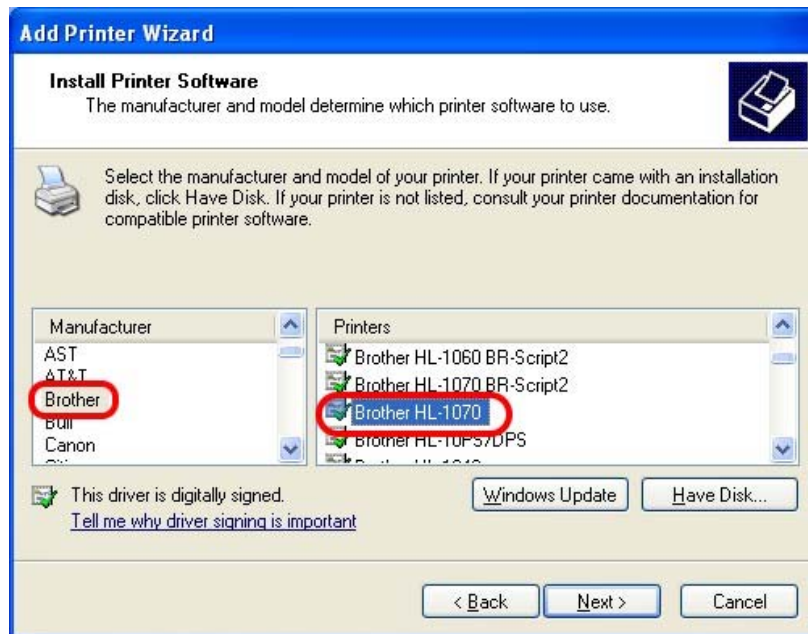
7. Click Standard and choose Generic Network Card.



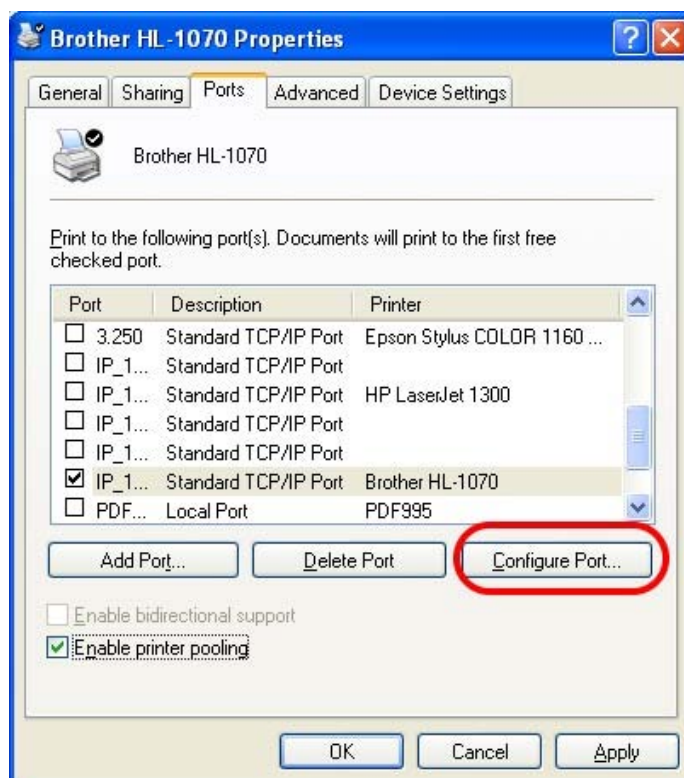
8. Then, in the following dialog, click **Finish**.



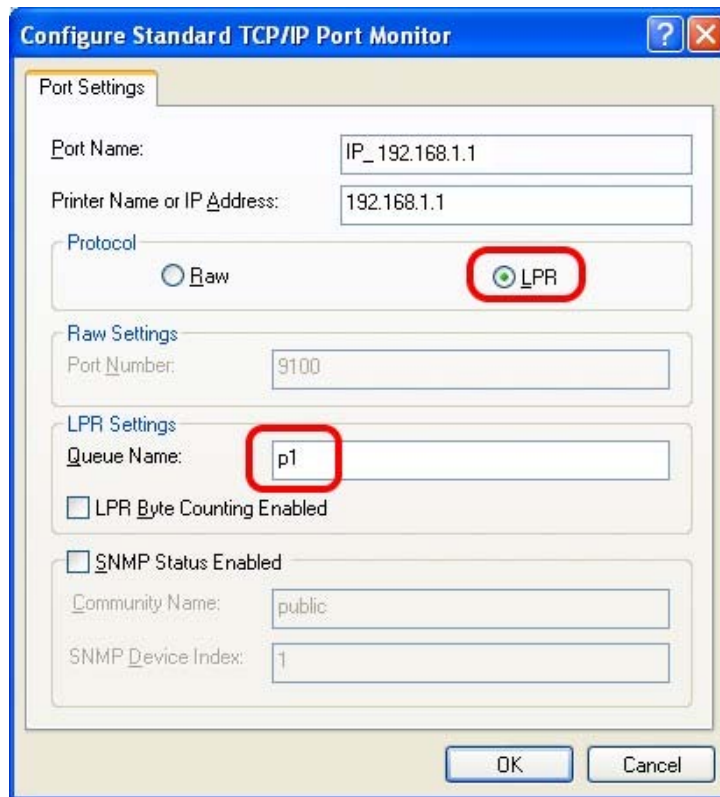
9. Now, your system will ask you to choose right name of the printer that you installed onto the router. Such step can make correct driver loaded onto your PC. When you finish the selection, click **Next**.



10. For the final stage, you need to go back to **Control Panel-> Printers** and edit the property of the new printer you have added.



11. Select "**LPR**" on Protocol, type **p1** (number 1) as Queue Name. Then click **OK**. Next please refer to the red rectangle for choosing the correct protocol and LPR name.



The printer can be used for printing now. Most of the printers with different manufacturers are compatible with vigor router.

Note 1: Some printers with the fax/scanning or other additional functions are not supported. If you do not know whether your printer is supported or not, please visit www.draytek.com to find out the printer list. Open **Support >FAQ/Application Notes**; find out the link of **USB>>Printer Server** and click it.



Then, click the **What types of printers are compatible with Vigor router?** link.

The screenshot shows a support page titled 'Printer Server'. On the left is a navigation menu with categories: 'FAQ / Application' (highlighted), 'Latest FAQ/Application', 'Basic', 'Firmware Upgrade', 'WAN', 'IPv6', 'Triple-Play', and 'Dual WAN'. The main content area shows a breadcrumb trail: 'You are here: Home > Supports > FAQ / Application Notes > Printer Server'. Below the breadcrumb is a search icon. The page title is 'Printer Server'. A table of links is displayed, with the first link 'What types of printers are compatible with Vigor router?' highlighted by a red rectangular box. The date '2012/01/12' is shown to the right of this link. Other links include 'How do I configure LPR printing on Windows7?' (dated 2012/08/20) and 'How do I configure LPR printing on My Windows Vista ?' (dated 2009/01/20). A partially visible link 'How do I configure LPR printing on Linux based ?' is at the bottom.

Link	Date
What types of printers are compatible with Vigor router?	2012/01/12
How do I configure LPR printing on Windows7?	2012/08/20
How do I configure LPR printing on My Windows Vista ?	2009/01/20
How do I configure LPR printing on Linux based ?	2009/01/20

Note 2: Vigor router supports printing request from computers via LAN ports but not WAN port.

3. Initial Settings

To access Internet, please finish basic configuration after completing the hardware installation.

3.1 Accessing Web Page

1. Make sure your PC connects to the router correctly.



Notice: You may either simply set up your computer to get IP dynamically from the router or set up the IP address of the computer to be the same subnet as **the default IP address of Vigor router 192.168.1.1**. For the detailed information, please refer to the later section - Trouble Shooting of this manual.

2. Open a web browser on your PC and type **http://192.168.1.1**. The following window will be open to ask for username and password. Please type “**admin/admin**” on Username/Password and click **Login**.

DrayTek Vigor2912 Series

Login

Username

Password

Login

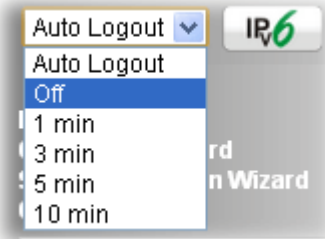
Copyright © 2013 DrayTek Corp. All Rights Reserved.



Notice: If you fail to access to the web configuration, please go to “Trouble Shooting” for detecting and solving your problem.

3. Now, the **Main Screen** will pop up.

- The web page can be logged out according to the chosen condition. The default setting is **Auto Logout**, which means the web configuration system will logout after five minutes without any operation. Change the setting for your necessity.



3.2 Basic Configuration – Quick Start Wizard

The **Quick Start Wizard** is designed for you to easily set up your router for Internet access. You can directly access the **Quick Start Wizard** via Web User Interface.



The home page will change slightly in accordance with the router model you have.

If your router can be under an environment with high speed NAT, the configuration provide here can help you to deploy and use the router quickly. The first screen of **Quick Start Wizard** is entering login password. After typing the password, please click **Next**.

Quick Start Wizard

Enter login password

Please enter an alpha-numeric string as your **Password** (Max 23 characters).

Old Password	<input type="password" value="....."/>
New Password	<input type="password" value="....."/>
Confirm Password	<input type="password" value="....."/>

On the next page as shown below, please select the WAN interface that you use. If Ethernet interface is used, please choose WAN1/WAN2; if 3G USB modem is used, please choose WAN3. Then click **Next** for next step.

Quick Start Wizard

WAN Interface

WAN Interface:	<input type="text" value="WAN1"/>
Display Name:	<input type="text"/>
Physical Mode:	Ethernet
Physical Type:	<input type="text" value="Auto negotiation"/>

WAN1/WAN2 and WAN3 will bring up different configuration page. Refer to the following for detailed information.

3.2.1 For WAN1/WAN2

WAN1/WAN2 is dedicated to physical mode in Ethernet. If you choose WAN1/WAN2, please specify physical type. Then, click **Next**.

Quick Start Wizard

WAN Interface

WAN Interface:	WAN1 ▾
Display Name:	<input type="text"/>
Physical Mode:	Ethernet
Physical Type:	Auto negotiation ▾

On the next page as shown below, please select the appropriate Internet access type according to the information from your ISP. For example, you should select PPPoE mode if the ISP provides you PPPoE interface.

PPPoE

1. Choose **WAN1/WAN2** as the WAN Interface and click the **Next** button. The following page will be open for you to specify Internet Access Type.

Quick Start Wizard

Connect to Internet

WAN 2
Select one of the following Internet Access types provided by your ISP.

- PPPoE
- PPTP
- L2TP
- Static IP
- DHCP

2. Click **PPPoE** as the Internet Access Type. Then click **Next** to continue.

Quick Start Wizard

PPPoE Client Mode

WAN 2
Enter the user name and password provided by your ISP.

User Name

Password

Confirm Password

3. Please manually enter the Username/Password provided by your ISP. Click **Next** for viewing summary of such connection.

Quick Start Wizard

Please confirm your settings:

WAN Interface:	WAN2
Physical Mode:	Ethernet
Physical Type:	Auto negotiation
Internet Access:	PPPoE

Click **Back** to modify changes if necessary. Otherwise, click **Finish** to save the current settings and restart the Vigor router.

4. Click **Finish**. A page of **Quick Start Wizard Setup OK!!!** will appear. Then, the system status of this protocol will be shown.
5. Now, you can enjoy surfing on the Internet.

PPTP/L2TP

1. Choose **WAN1/WAN2** as the WAN Interface and click the **Next** button. The following page will be open for you to specify Internet Access Type.

Quick Start Wizard

Connect to Internet

WAN 2
Select one of the following Internet Access types provided by your ISP.

- PPPoE
- PPTP
- L2TP
- Static IP
- DHCP

< Back Next > Finish Cancel

2. Click **PPTP/L2TP** as the Internet Access Type. Then click **Next** to continue.

Quick Start Wizard

PPTP Client Mode

WAN 2
Enter the user name, password, WAN IP configuration and PPTP server IP provided by your ISP.

User Name:

Password:

Confirm Password:

WAN IP Configuration

- Obtain an IP address automatically
- Specify an IP address

IP Address:

Subnet Mask:

Gateway:

Primary DNS:

Second DNS:

PPTP Server:

< Back Next > Finish Cancel

3. Please type in the IP address/mask/gateway information originally provided by your ISP. Then click **Next** for viewing summary of such connection.

Quick Start Wizard

Please confirm your settings:

WAN Interface:	WAN2
Physical Mode:	Ethernet
Physical Type:	Auto negotiation
Internet Access:	PPTP

Click **Back** to modify changes if necessary. Otherwise, click **Finish** to save the current settings and restart the Vigor router.

4. Click **Finish**. A page of **Quick Start Wizard Setup OK!!!** will appear. Then, the system status of this protocol will be shown.
5. Now, you can enjoy surfing on the Internet.

Static IP

1. Choose **WAN1/WAN2** as the WAN Interface and click the **Next** button. The following page will be open for you to specify Internet Access Type.

Quick Start Wizard

Connect to Internet

WAN 2

Select one of the following Internet Access types provided by your ISP.

- PPPoE
- PPTP
- L2TP
- Static IP
- DHCP

< Back

Next >

Finish

Cancel

2. Click **Static IP** as the Internet Access type. Simply click **Next** to continue.

Quick Start Wizard

Static IP Client Mode

WAN 2

Enter the Static IP configuration provided by your ISP.

WAN IP	<input type="text" value="172.16.3.110"/>
Subnet Mask	<input type="text" value="255.255.0.0"/>
Gateway	<input type="text" value="172.16.3.1"/>
Primary DNS	<input type="text" value="8.8.8.8"/>
Secondary DNS	<input type="text" value="8.8.4.4"/> (optional)

< Back

Next >

Finish

Cancel

3. Please type in the IP address information originally provided by your ISP. Then click **Next** for next step.

Quick Start Wizard

Please confirm your settings:

WAN Interface:	WAN2
Physical Mode:	Ethernet
Physical Type:	Auto negotiation
Internet Access:	Static IP

Click **Back** to modify changes if necessary. Otherwise, click **Finish** to save the current settings and restart the Vigor router.

< Back

Next >

Finish

Cancel

4. Click **Finish**. A page of **Quick Start Wizard Setup OK!!!** will appear. Then, the system status of this protocol will be shown.
5. Now, you can enjoy surfing on the Internet.

DHCP

1. Choose **WAN1/WAN2** as WAN Interface and click the **Next** button. The following page will be open for you to specify Internet Access Type.

Quick Start Wizard

Connect to Internet

WAN 2

Select one of the following Internet Access types provided by your ISP.

- PPPoE
- PPTP
- L2TP
- Static IP
- DHCP

< Back Next > Finish Cancel

2. Click **DHCP** as the Internet Access type. Simply click **Next** to continue.

Quick Start Wizard

DHCP Client Mode

WAN 2

If your ISP requires you to enter a specific host name or specific MAC address, please enter it in.

Host Name (optional)

MAC 00 -1D -AA -83 -11 -A6 (optional)

< Back Next > Finish Cancel

3. After finished the settings above, click **Next** for viewing summary of such connection.

Quick Start Wizard

Please confirm your settings:

WAN Interface:	WAN2
Physical Mode:	Ethernet
Physical Type:	Auto negotiation
Internet Access:	DHCP

Click **Back** to modify changes if necessary. Otherwise, click **Finish** to save the current settings and restart the Vigor router.

< Back

Next >

Finish

Cancel

4. Click **Finish**. A page of **Quick Start Wizard Setup OK!!!** will appear. Then, the system status of this protocol will be shown.
5. Now, you can enjoy surfing on the Internet.

3.2.2 For WAN3 (USB)

1. Choose **WAN3** as WAN Interface and click the **Next** button.

Quick Start Wizard

WAN Interface

WAN Interface:	<input type="text" value="WAN3"/>
Display Name:	<input type="text"/>
Physical Mode:	USB
Physical Type:	<input type="text" value="Auto negotiation"/>

2. In the following page, fill in the information for 3G/4G USB Modem.

Quick Start Wizard

Connect to Internet

WAN 3

Internet Access :	<input type="text" value="3G/4G USB Modem(PPP mode)"/>
3G/4G USB Modem(PPP mode)	
SIM PIN code	<input type="text"/>
Modem Initial String	<input type="text" value="AT&FE0V1X1&D2&C1S0=0"/> (Default:AT&FE0V1X1&D2&C1S0=0)
APN Name	<input type="text"/> <input type="button" value=" Apply "/>

3. Then, click **Next** for viewing summary of such connection.

Quick Start Wizard

Please confirm your settings:

WAN Interface:	WAN3
Physical Mode:	USB
Internet Access:	PPP

Click **Back** to modify changes if necessary. Otherwise, click **Finish** to save the current settings and restart the Vigor router.

4. Click **Finish**. A page of **Quick Start Wizard Setup OK!!!** will appear. Then, the system status of this protocol will be shown.
5. Now, you can enjoy surfing on the Internet.

3.3 Wireless Configuration



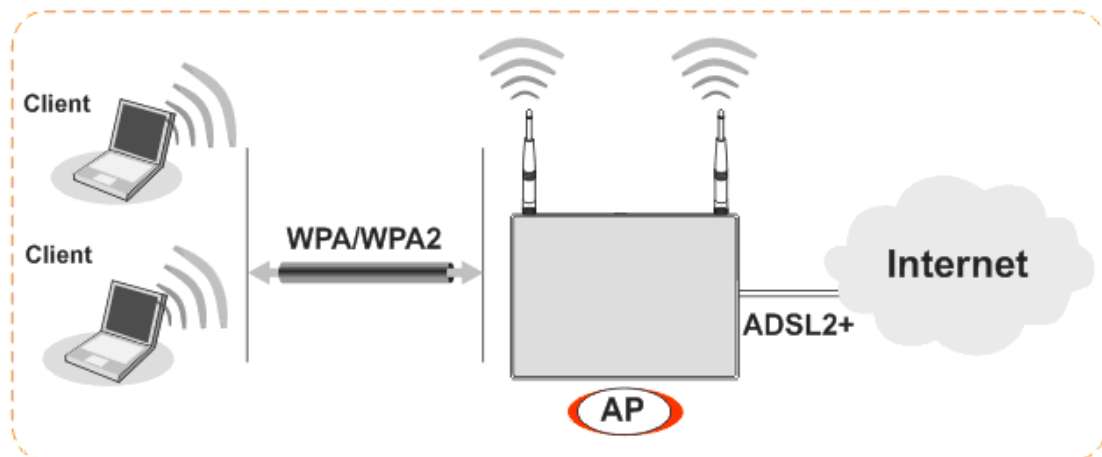
For the user of Vigor2912, please skip this section.

For operating Vigor2912n well, it is necessary for you to set the wireless LAN settings for using wireless function. Please read the following section carefully for configuring the settings for this router.

(The default value of Frequency Domain was set by factory depends on the reselling region.)

3.3.1 Basic Wireless LAN Concept

In an Infrastructure Mode of wireless network, Vigor wireless router plays a role as an **Access Point (AP)** connecting to lots of wireless clients or Stations (STA). All the STAs (clients) will share the same Internet connection with other wired hosts via Vigor wireless router.



3.3.2 General Setup

1. On the **Wireless LAN** group, select **General Setup**. The following page will be shown.

Wireless LAN >> General Setup

General Setting (IEEE 802.11)

Enable Wireless LAN

Mode : Mixed(11b+11g+11n) ▼

Index(1-15) in [Schedule Setup](#): , , ,

Only schedule profiles that have the action "Force Down" are applied to the WLAN, all other actions are ignored.

	Enable	Hide SSID	SSID	Isolate Member	Isolate VPN
1	<input type="checkbox"/>	<input type="checkbox"/>	<input style="width: 150px;" type="text"/>	<input type="checkbox"/>	<input type="checkbox"/>
2	<input type="checkbox"/>	<input type="checkbox"/>	<input style="width: 150px;" type="text"/>	<input type="checkbox"/>	<input type="checkbox"/>
3	<input type="checkbox"/>	<input type="checkbox"/>	<input style="width: 150px;" type="text"/>	<input type="checkbox"/>	<input type="checkbox"/>
4	<input type="checkbox"/>	<input type="checkbox"/>	<input style="width: 150px;" type="text"/>	<input type="checkbox"/>	<input type="checkbox"/>

Isolate Member: Wireless clients (stations) with the same SSID cannot access for each other.

Isolate VPN: isolate wireless with remote dial-in and LAN to LAN VPN.

Channel: Channel 13, 2472MHz ▼ Long Preamble:

Long Preamble: necessary for some old 802.11 b devices only(lower performance)

Packet-OVERDRIVE™

Tx Burst

Note:
The same technology must also be supported in clients to boost WLAN performance.

	Enable	Upload	Download
SSID 1	<input type="checkbox"/>	30000 kbps	30000 kbps
SSID 2	<input type="checkbox"/>	30000 kbps	30000 kbps
SSID 3	<input type="checkbox"/>	30000 kbps	30000 kbps
SSID 4	<input type="checkbox"/>	30000 kbps	30000 kbps

Note: range 100~50,000 kbps

OK
Cancel

2. Check **Enable Wireless LAN** to enable the wireless function.
3. At present, the router can connect to 11n Only, 11g Only, Mixed (11b+11g), Mixed (11a+11n), Mixed (11g+11n), and Mixed (11b+11g+11n) stations simultaneously. Simply choose **Mixed (11b+11g+11n)** mode.
4. Type in the name of the **SSID**. The default name for SSID is **DrayTek**. We suggest you to change it with a particular name.
5. Click **OK** to save the configuration.

3.3.3 Security Settings

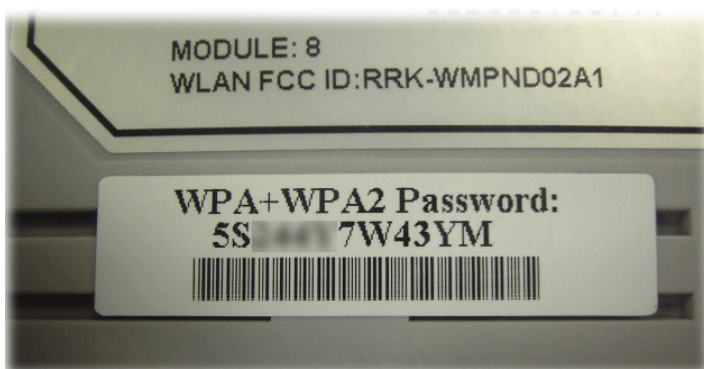
1. On the **Wireless LAN** group, select **Security**.

Wireless LAN >> Security Settings

SSID 1	SSID 2	SSID 3	SSID 4
Mode: <input type="text" value="Disable"/>			
Set up RADIUS Server if 802.1x is enabled.			
WPA:			
Encryption Mode: TKIP for WPA/AES for WPA2			
Pre-Shared Key(PSK): <input type="text" value="*****"/>			
Type 8~63 ASCII character or 64 Hexadecimal digits leading by "0x", for example "cfgs01a2..." or "0x655abcd....".			
WEP:			
Encryption Mode: <input type="text" value="64-Bit"/>			
<input checked="" type="radio"/> Key 1 : <input type="text" value="*****"/>			
<input type="radio"/> Key 2 : <input type="text" value="*****"/>			
<input type="radio"/> Key 3 : <input type="text" value="*****"/>			
<input type="radio"/> Key 4 : <input type="text" value="*****"/>			
For 64 bit WEP key Type 5 ASCII character or 10 Hexadecimal digits leading by "0x", for example "AB312" or "0x4142333132".			
For 128 bit WEP key Type 13 ASCII character or 26 Hexadecimal digits leading by "0x", for example "0123456789abc" or "0x30313233343536373839414243".			

2. The default security mode is **Mixed (WPA+WPA2)/PSK**. For the wireless client who wants to access into Internet through such router, please **input the default PSK** value for connection.

Default Pre-Shared Key (PSK) with 13 ASCII characters is provided and stated on the label pasted on the bottom of the router.



3. Click **OK** to save settings.

Be aware that for the communication, all wireless devices must support the same encryption bit length and share the same key. If WEP mode is selected, only one of four preset keys can be selected at one time.

This page is left blank.

4. Trouble Shooting

This section will guide you to solve abnormal situations if you cannot access into the Internet after installing the router and finishing the web configuration. Please follow sections below to check your basic installation status stage by stage.

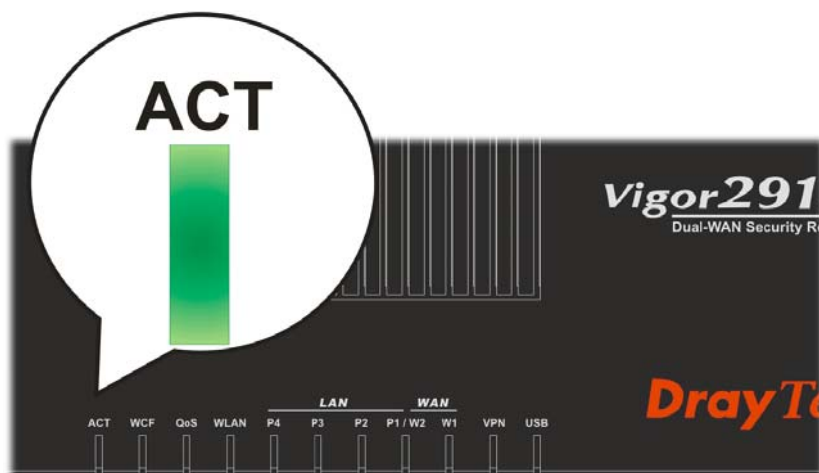
- Checking if the hardware status is OK or not.
- Checking if the network connection settings on your computer are OK or not.
- Pinging the router from your computer.
- Checking if the ISP settings are OK or not.
- Backing to factory default setting if necessary.

If all above stages are done and the router still cannot run normally, it is the time for you to contact your dealer for advanced help.

4.1 Checking If the Hardware Status Is OK or Not

Follow the steps below to verify the hardware status.

1. Check the power line and LAN cable connections. Refer to “**2.1 Hardware Installation**” for details.
2. Turn on the router. Make sure the **ACT LED** blink once per second and the correspondent **LAN LED** is bright.



3. If not, it means that there is something wrong with the hardware status. Simply back to “**2.1 Hardware Installation**” to execute the hardware installation again. And then, try again.

4.2 Checking If the Network Connection Settings on Your Computer Is OK or Not

Sometimes the link failure occurs due to the wrong network connection settings. After trying the above section, if the link is still failed, please do the steps listed below to make sure the network connection settings is OK.

For Windows



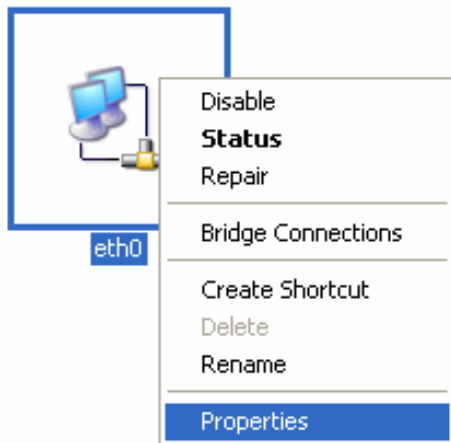
The example is based on Windows XP. As to the examples for other operation systems, please refer to the similar steps or find support notes in www.draytek.com.

Go to **Control Panel** and then double-click on **Network Connections**.

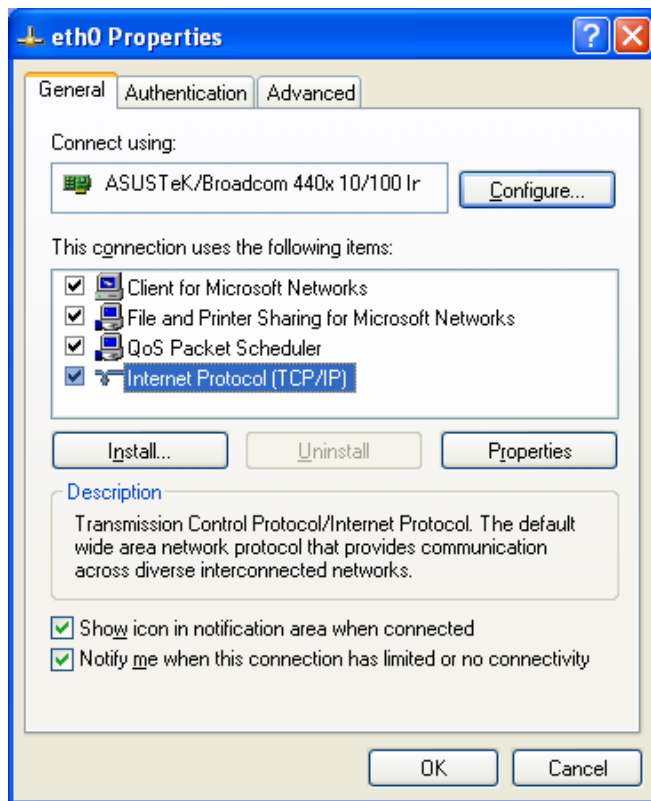


Network Connections

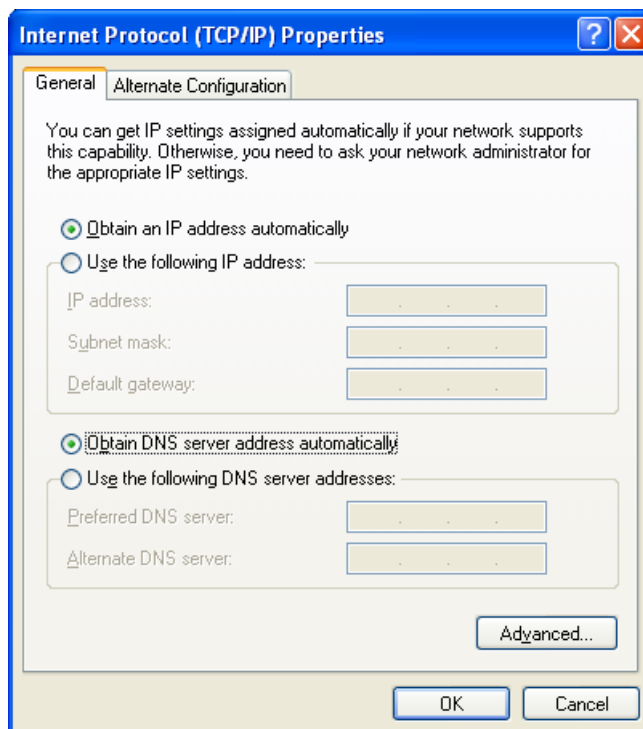
1. Right-click on **Local Area Connection** and click on **Properties**.



2. Select **Internet Protocol (TCP/IP)** and then click **Properties**.

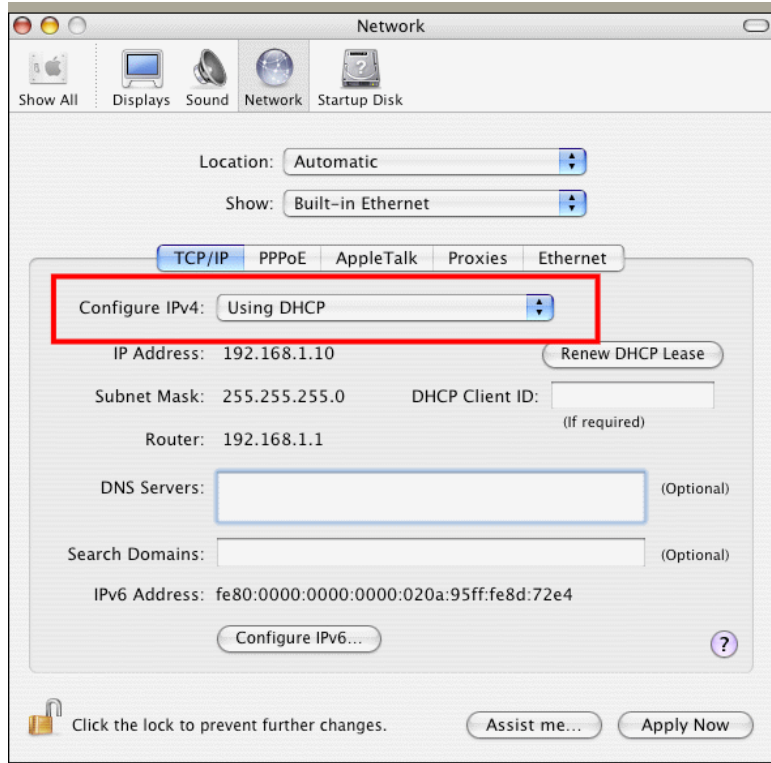


3. Select **Obtain an IP address automatically** and **Obtain DNS server address automatically**.



For Mac OS

1. Double click on the current used Mac OS on the desktop.
2. Open the **Application** folder and get into **Network**.
3. On the **Network** screen, select **Using DHCP** from the drop down list of Configure IPv4.



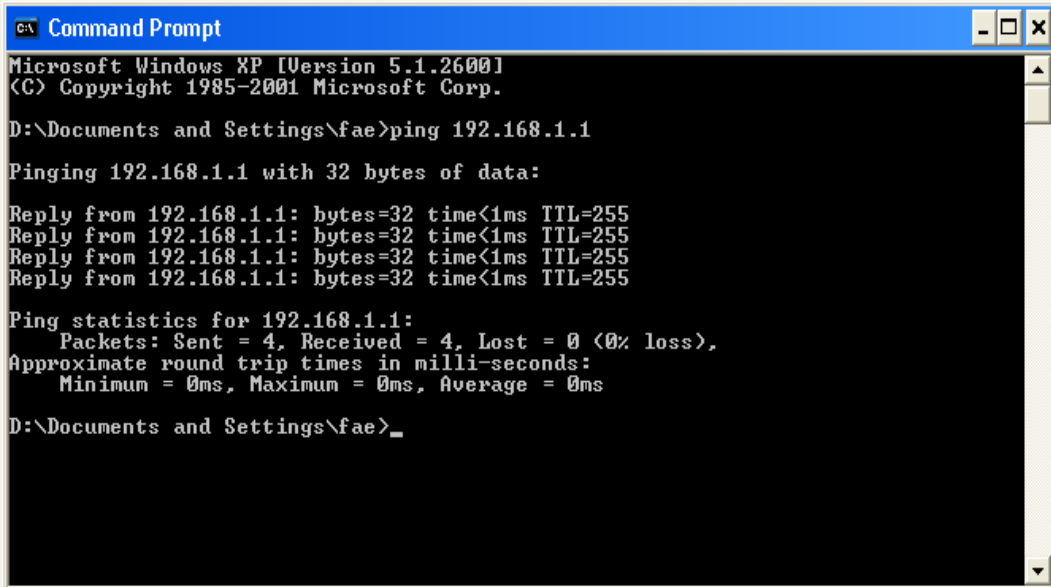
4.3 Pinging the Router from Your Computer

The default gateway IP address of the router is 192.168.1.1. For some reason, you might need to use “ping” command to check the link status of the router. **The most important thing is that the computer will receive a reply from 192.168.1.1.** If not, please check the IP address of your computer. We suggest you setting the network connection as **get IP automatically**. (Please refer to the section 4.2)

Please follow the steps below to ping the router correctly.

For Windows

1. Open the **Command Prompt** window (from **Start menu> Run**).
2. Type **command** (for Windows 95/98/ME) or **cmd** (for Windows NT/2000/XP/Vista/7). The DOS command dialog will appear.



```
Microsoft Windows XP [Version 5.1.2600]
(C) Copyright 1985-2001 Microsoft Corp.

D:\Documents and Settings\fae>ping 192.168.1.1

Pinging 192.168.1.1 with 32 bytes of data:

Reply from 192.168.1.1: bytes=32 time<1ms TTL=255
Reply from 192.168.1.1: bytes=32 time<1ms TTL=255
Reply from 192.168.1.1: bytes=32 time<1ms TTL=255
Reply from 192.168.1.1: bytes=32 time<1ms TTL=255

Ping statistics for 192.168.1.1:
    Packets: Sent = 4, Received = 4, Lost = 0 (0% loss),
    Approximate round trip times in milli-seconds:
        Minimum = 0ms, Maximum = 0ms, Average = 0ms

D:\Documents and Settings\fae>_
```

3. Type **ping 192.168.1.1** and press [Enter]. If the link is OK, the line of “**Reply from 192.168.1.1:bytes=32 time<1ms TTL=255**” will appear.
4. If the line does not appear, please check the IP address setting of your computer.

For Mac OS (Terminal)

1. Double click on the current used Mac OS on the desktop.
2. Open the **Application** folder and get into **Utilities**.
3. Double click **Terminal**. The Terminal window will appear.
4. Type **ping 192.168.1.1** and press [Enter]. If the link is OK, the line of “**64 bytes from 192.168.1.1: icmp_seq=0 ttl=255 time=xxxx ms**” will appear.

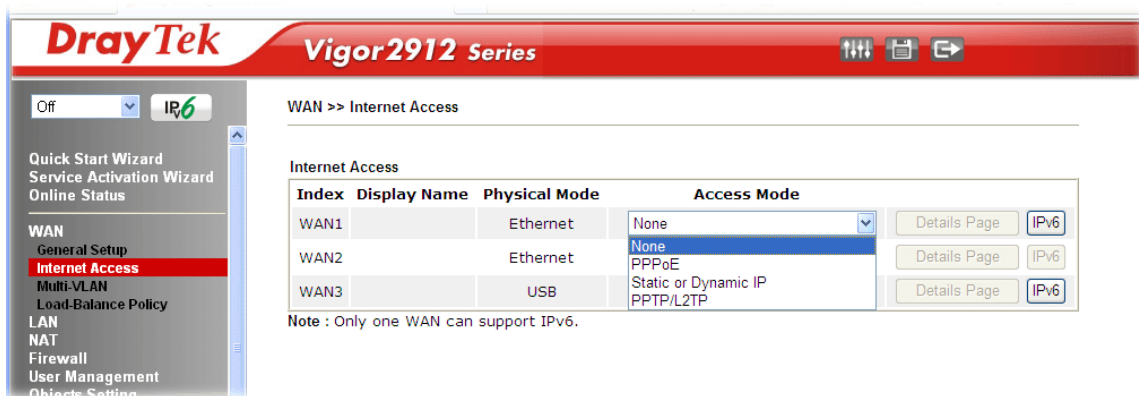
```

Terminal — bash — 80x24
Last login: Sat Jan 3 02:24:18 on ttty1
Welcome to Darwin!
Vigor10:~ draytek$ ping 192.168.1.1
PING 192.168.1.1 (192.168.1.1): 56 data bytes
64 bytes from 192.168.1.1: icmp_seq=0 ttl=255 time=0.755 ms
64 bytes from 192.168.1.1: icmp_seq=1 ttl=255 time=0.697 ms
64 bytes from 192.168.1.1: icmp_seq=2 ttl=255 time=0.716 ms
64 bytes from 192.168.1.1: icmp_seq=3 ttl=255 time=0.731 ms
64 bytes from 192.168.1.1: icmp_seq=4 ttl=255 time=0.72 ms
^C
--- 192.168.1.1 ping statistics ---
5 packets transmitted, 5 packets received, 0% packet loss
round-trip min/avg/max = 0.697/0.723/0.755 ms
Vigor10:~ draytek$ █

```

4.4 Checking If the ISP Settings are OK or Not

Open **WAN >> Internet Access** page and then check whether the ISP settings are set correctly. Click **Details Page** of WAN1/WAN2/WAN3 to review the settings that you configured previously.



4.5 Backing to Factory Default Setting If Necessary

Sometimes, a wrong connection can be improved by returning to the default settings. Try to reset the router by software or hardware..



Warning: After pressing **factory default setting**, you will lose all settings you did before. Make sure you have recorded all useful settings before you pressing.

Software Reset

You can reset the router to factory default via Web page. Go to **System Maintenance** and choose **Reboot System** on the web page. The following screen will appear. Choose **Using factory default configuration** and click **Reboot Now**. After few seconds, the router will return all the settings to the factory settings.

System Maintenance >> Reboot System

Reboot System

Do you want to reboot your router ?

Using current configuration
 Using factory default configuration

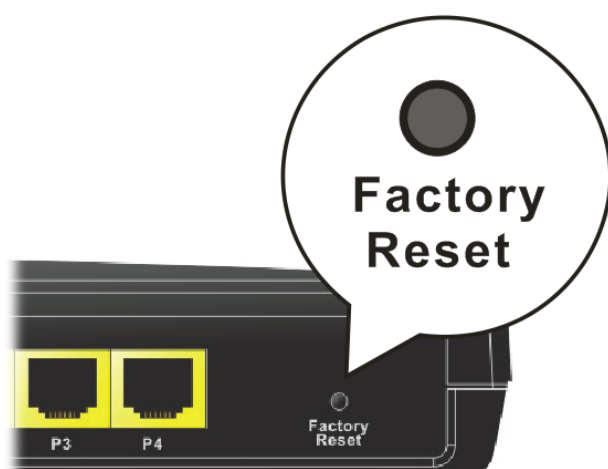
Auto Reboot Time Schedule

Index(1-15) in **Schedule** Setup: , , ,

Note: Action and Idle Timeout settings will be ignored.

Hardware Reset

While the router is running (ACT LED blinking), press the **RST** button and hold for more than 5 seconds. When you see the **ACT** LED blinks rapidly, please release the button. Then, the router will restart with the default configuration.



After restore the factory default setting, you can configure the settings for the router again to fit your personal request.

4.6 Contacting Your Dealer

If the router still cannot work correctly after trying many efforts, please contact your dealer for further help right away. For any questions, please feel free to send e-mail to support@draytek.com.