



## DiskStation DS2015xs

Synology DiskStation DS2015xs features an all-new quad-core CPU and built-in 10GbE SFP+ LAN ports, providing excellent performance for data transfer and multi-tasking data processing. With scalability of up to 20 drives, Synology DS2015xs is the ideal storage solution for centralizing data backups, protecting critical assets and sharing files across different platforms. Synology DS2015xs is backed with Synology's 5-year limited warranty.

### Highlights

- Excellent performance of 1,930.18 MB/s sequential read throughput and 54,654.84 sequential read IOPS<sup>1</sup>
- 2 x 10Gbps SFP+ ports and 2 x 1Gbps RJ-45 ports with Failover and Link Aggregation support
- Scale up to 20 drives with Synology DX1215<sup>2</sup>
- Expandable RAM module (up to 8GB)
- High Availability and SSD cache support
- Backed with next business day replacement service<sup>3</sup>
- VMware®, Citrix®, and Microsoft® Hyper-V® certified
- Running on Synology DiskStation Manager (DSM)

### Excellent Combination of Cost-effectiveness and Performance

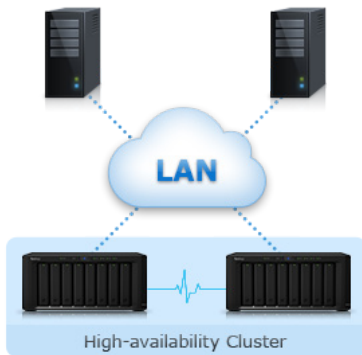
DS2015xs is built for small and medium-sized businesses seeking for an excellent combination of cost-effectiveness and performance. Equipped with an **quad-core CPU**, **expandable RAM module up to 8GB**, **native SATA III 6Gb/s support**, and **built-in 10GbE SFP+ ports**, DS2015xs is ideal for the mission critical tasks, multi-tasking data processing as well as virtualization support. Through advanced flash technology, the combination of hard drives and **SSD cache** boosts throughput efficiently while minimizing cost per gigabyte. With link aggregation, Synology DS2015xs can deliver up to an average **1,930.18 MB/s sequential read throughput** and **54,654.84 sequential read IOPS** under RAID 5 configuration with VLAN<sup>1</sup>.

### Virtualization Certified

DS2015xs provides seamless storage solutions for virtualization environments, including **VMware**, **Citrix**, and **Hyper-V**. Being **VMware vSphere 5** and **VAAI** integration certified, DS2015xs helps offload specific storage operations and optimizes computation power for unparalleled performance and efficiency in VMware environments. As the centralized storage of a virtual environment, DS2015xs enables virtual machine migration, allowing movement from server to server whilst eliminating service downtime and disruption to user. **Windows Offloaded Data Transfer (ODX)** and **Synology Advanced LUN** support extremely improves the efficiency on massive data transfer and migration.

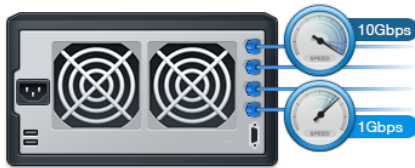
### Unparalleled Flexibility

As your data storage needs grow, Synology's DS2015xs can grow with you. DS2015xs can be connected to dedicated expansion units for additional storage on the fly, growing capacity with minimal effort. When paired with Synology DX1215 expansion unit<sup>2</sup> through specially designed expansion cable, raw capacity can be as high as 120TB.



**Figure 1) Reliability, Availability & Disaster Recovery**

Synology High Availability ensures seamless transition between clustered servers in the event of server failure with minimal impact to businesses.



**Figure 2) Superior Performance**

Two 10Gbps SFP+ ports and two 1Gbps RJ-45 ports with link aggregation support allows DS2015xs to deliver superior performance.

## Feature-Rich Business Applications

Put your data to work with Synology's DS2015xs. With **Windows ACL** and **LDAP** support, DS2015xs fits easily into any existing workgroup environment, providing detailed access control and efficient privilege settings. SMB applications including **printer sharing**, **VPN Server**, **Mail Server**, **web server**, **anti-virus**, and **IP surveillance**, allow a single Synology DS2015xs to replace several traditional computing devices and help to maximize your productivity while keeping cost and effort to a minimum.

## Resilient and Reliable

In addition to its superior performance, DS2015xs is built for reliability. **Two 10Gbps SFP+ LAN** and **two 1Gbps RJ-45 LAN ports** provide redundancy in the event of unexpected hardware failure while hot swappable drives also help to minimize system downtime during drive replacement.

Uninterrupted availability is a critical goal for all businesses; however, many businesses worldwide still remain unprepared for disaster. **Synology High Availability Manager** can ensure a seamless transition between clustered servers in the event of server failure with minimal impact to applications, thus decreasing the risk of unexpected interruptions and costly downtime.

## Easy Backup Solutions

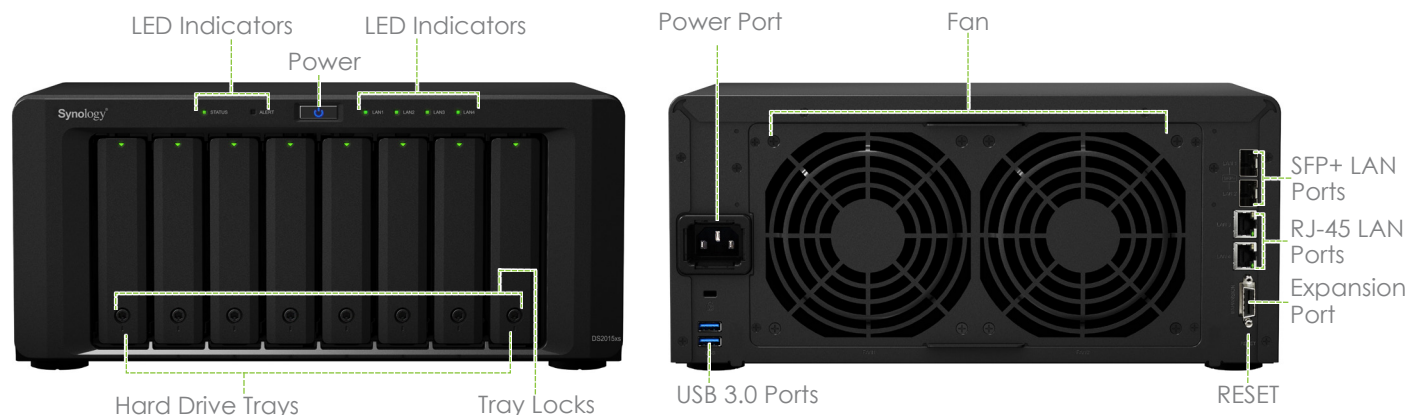
To protect your critical business data, DS2015xs can become a centralized backup target for consolidating fragmented and unstructured information across your network through a range of options. **Synology Hybrid RAID** allows you to optimize usage and get the most out of your hard drives, while also keeping your storage safe with data redundancy. Complete backup solutions including **LUN Snapshot**, **LUN clone** and **Backup & Replication** minimize the impact of disasters.

## Energy Efficient Design

Synology DS2015xs is designed with energy efficiency in mind. Equipped with two 120 X 120 mm fans and a smart airflow design to keep the system running cool 24/7, while its noise dampening design makes it much quieter than PC counterparts. Hard drive hibernation further reduces power consumption and operation costs.

All Synology products are produced with RoHS compliant parts and packed with recyclable packing materials. Synology acknowledges the responsibility as a global citizen to continually work to reduce the environmental impact of every product produced.

# Connections & Buttons



## Technical Specifications

### Hardware

CPU	Annapurna Labs Alpine AL-514 Quad Core 1.7GHz
Hardware Encryption Engine	Yes
Floating Point	Yes
RAM Size	DDR3 4 GB (Expandable up to 8 GB)
Internal HDD/SSD	3.5" or 2.5" SATA (III) / SATA (II) X 8 (hard drives not included)
Maximum Internal Raw Capacity	48 TB (6 TB HDD X 8) (The actual capacity will differ according to volume types)
Hot Swappable HDD	Yes
External Ports	USB 3.0 port X 2, Expansion port X 1
Size (HxWxD)	157 x 340 x 233 mm
Weight	5.31kg
LAN	10Gbps SFP+ port X 2, 1Gbps RJ-45 port X 2
Wake on LAN/WAN	Yes (1Gbps RJ-45 LAN ports only)
Wireless Support	Yes (wireless dongles not included)
AC Input Power Voltage	100V to 240V
Power Frequency	50 Hz to 60 Hz, Single Phase
Operating Temperature	5°C to 35°C (40°F to 95°F)
Storage Temperature	-20°C to 60°C (-5°F to 140°F)
Relative Humidity	5% to 95% RH

### General

Networking Protocols	CIFS, AFP, NFS, FTP, WebDAV, CalDAV, iSCSI, Telnet, SSH, SNMP, VPN (PPTP, OpenVPN™, L2TP)
File System	Internal: EXT4 External: EXT4, EXT3, FAT, NTFS, HFS+
Storage Management	Maximum File System Size: 108 TB, Maximum Internal Volume #: 1024, Maximum iSCSI Target #: 64, Maximum iSCSI LUN#: 512; Raid Clone/Snapshot support; Supported RAID Type: Synology Hybrid RAID, Basic, JBOD, RAID 0, RAID 1, RAID 5, RAID 6, RAID 10; Synology Expansion Unit Support : DX1215
File Sharing Capability	Maximum User Account: 16000, Maximum Group: 512, Maximum Shared Folder: 512, Maximum Concurrent CIFS/AFP/FTP Connections: 1024
Privilege	Windows Access Control List (ACL)
Directory Service	Windows AD Integration: Domain Users login via Samba (CIFS)/AFP/FTP/File Station, LDAP Integration
Virtualization	VMware vSphere 5, Microsoft Hyper-V, Citrix Certified
Security	FTP over SSL/TLS, IP Auto-Block, Firewall, Encrypted Network Backup over Rsync, HTTPS Connection
Utilities	Synology Assistant, Cloud Station, Evidence Integrity Authenticator
Supported Clients	Windows XP onward, Mac OS X 10.5 onward, Ubuntu 9.04 onward
Supported Browsers	Chrome®, Firefox® Internet Explorer®: 8 or onward, Safari® 5 or onward, Safari (iOS 5 or later on iPad®), Chrome (Android™ 4.0 on tablets)
Language	English, Deutsch, Français, Italiano, Español, Dansk, Norsk, Svensk, Nederlands, Русский, Polski, Magyar, Português do Brasil, Português Europeu, Türkçe, Český, 日本語, 한국어, 繁體中文, 简体中文

## Applications

File Station	Virtual Drive, Remote Folder
Backup Solutions	Network Backup, Local Backup, Desktop Backup, Shared Folder Sync - Maximum Task Number: 16, Configuration Backup
Mail Server	Supported Mail Server Protocols: POP3, SMTP, IMAP
FTP Server	Bandwidth Control, Custom FTP Passive Port Range, Anonymous FTP, Transfer Log
Web Station	Virtual Host (up to 30 websites), PHP/MySQL®, 3rd-Party Applications Support
Printer Server	Maximum Printer #: 2, Printing Protocols: LPR, CIFS, IPP, Apple iOS Printing, Google Cloud Print™, Multi Functional Print Server (MFP functions are for Windows PC only)
Log Center	SSL Connection, Log Rotation: 6 months, 1 year, 2 years, 3 years, Email Notification
iOS/Android™ Applications	DS audio, DS cam, DS cloud, DS download, DS file, DS finder, DS photo+, DS video, DS note
Windows™ Phone Applications	DS audio, DS download, DS file, DS finder, DS photo+, DS video

## Add-on Packages

Surveillance Station	Default IP cam #: 2, Maximum IP cam # (licenses required): 40 (with two free licenses to install two IP cameras. Additional licenses can be purchased to expand the license quota.)
VPN Server	Maximum Connections : 20, VPN Method: PPTP, OpenVPN™
Mail Station	Webmail Interface for Mail Server, Receiving Mails from Multiple POP3 Mailboxes, Customizable SMTP Server
Antivirus Essential	Full System Scan, Scheduled Scan, White List Customization, Virus Definition Auto Update
Time Backup	Maximum Task Number: 16, Multiple File Versions Retained, Instant File Restoration
Cloud Station	Maximum Concurrent File Transfers: 1024, Retain Historical and Deleted File Versions
Cloud Sync	Data Sync with Public Cloud Services: Dropbox, Google Drive, Baidu, Microsoft OneDrive, Box and hubiC
Download Station	Supported Download Protocols: BT/HTTP/FTP/NZB/eMule Maximum Concurrent Download Tasks: 80
Note Station	Rich-Text Note Organization with Versioning, Encryption, Sharing, Media Embedding and Attachments
Other Packages	Photo Station, Audio Station, iTunes® Server, 3rd-party packages

## Environment and Packaging

Environment	RoHS Compliant
Package Content	DS2015xs Main Unit, Welcome Note, Accessory Pack, AC Power Cord, RJ-45 LAN Cable X 2
Optional Accessories	Remote, Camera License Pack, Expansion Unit (DX1215), 4GB DDR3 RAM Module
Warranty	5 years

\*Model specifications are subject to change without notice. Please refer to [www.synology.com](http://www.synology.com) for the latest information.

1. Performance may vary depending on the environment.
2. DS2015xs supports one Synology DX1215, sold separately.
3. Available in selected countries only. For detailed terms and conditions, please visit the Synology Replacement Service (SRS) website at <https://srs.synology.com>.

## SYNOLOGY INC.

Synology is dedicated to taking full advantage of the latest technologies to bring businesses and home users reliable and affordable ways to centralize data storage, simplify data backup, share and sync files across different platforms, and access data on-the-go. Synology aims to deliver products with forward-thinking features and the best in class customer services.

Copyright © 2014, Synology Inc. All rights reserved. Synology, the Synology logo are trademarks or registered trademarks of Synology Inc. Other product and company names mentioned herein may be trademarks of their respective companies. Synology may make changes to specification and product descriptions at anytime, without notice. Printed in Taiwan.

DS2015xs-2014-ENU-REV001

### Headquarters

Synology Inc. 3F-3, No. 106, Chang An W. Rd., Taipei, Taiwan Tel: +886 2 2552 1814 Fax: +886 2 2552 1824

### China

Synology Shanghai  
20070, Room 516, No. 638,  
Hengfeng Rd., Zhabei Dist.,  
Shanghai

### France

Synology France SARL  
39 rue Louis Blanc,  
92400 Courbevoie  
France  
Tel: +33 147 176288

### North & South America

Synology America Corp.  
13343 NE Bel-Red Road,  
Bellevue, WA 98005  
USA  
Tel: +1 425 818 1587

### United Kingdom

Synology UK Ltd.  
Unit C, Denbigh West Business Park,  
Third Avenue, Bletchley,  
Milton Keynes, MK1 1DH, UK  
Tel: +44 1908 366380

### Germany

Synology GmbH  
Grafenberger Allee 125  
40237 Düsseldorf  
Deutschland  
Tel: +49 211 9666 9666