

AirCam POE-250HD

H.264 1.3 MegaPixel POE Vandal Proof Dome

The POE-250HD is a high-end 1.3 MegaPixel network camera designed for professional outdoor surveillance and security applications. MegaPixel (MP) IP cameras offer improvements in image quality compared to conventional surveillance cameras. The possibility to view live video streaming from AirLive IP Cameras over the Internet is only one of the benefits. AirLive AirCam POE-250HD is designed to offer high-performance surveillance and is equipped with PoE port, allowing power and data to be transmitted via a single Ethernet cable. This provides an easier installation, lower cabling costs and allows placement of AirLive PoE cameras in locations without access to electrical source.



H.264 Compression

H.264 is a high performing video compression standard that boasts a much higher compression ratio than MJPEG or MPEG-4, drastically reducing file sizes and conserving valuable network bandwidth and storage space. With up to 90% reduction in file size, an 1 MB image can be drastically reduced to as low as 10KB using H.264.



1.3 Mega-Pixel Video Quality

AirLive AirCam POE-250HD offer high quality image at maximum 1280x1024 resolution. One of the most compelling advantages of MegaPixel surveillance systems is their ability to capture more details in a frame and at the same time not missing any finer details that are useful for license plate identification and human recognition.

* Red box is standard 640X480 image resolution. The AirCam POE-250HD offer 4 times bigger image size compare to VGA camera.

Vandal Proof Housing with IP65 Waterproof Resistance

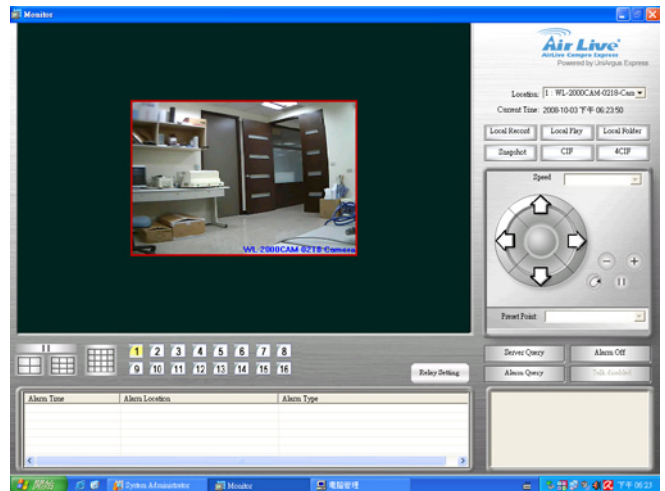
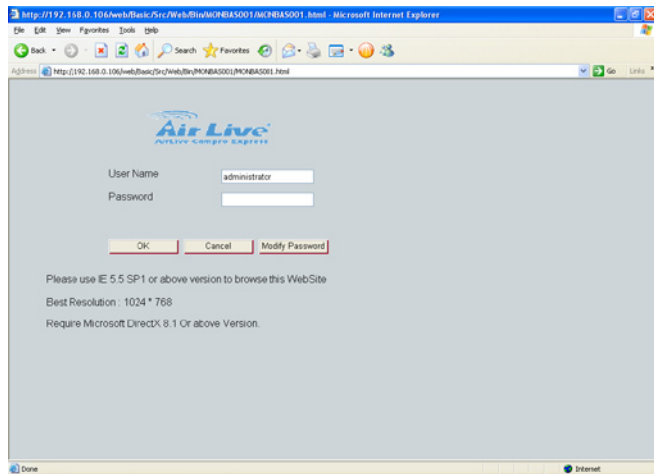
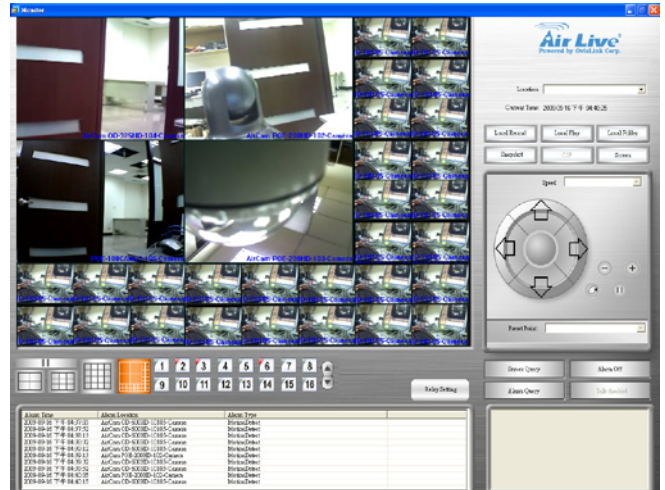
AirLive AirCam POE-250HD is an IP66 rated weather proof IP camera designed for 24hr indoor/ outdoor surveillance under the harshest conditions. AirCam POE-250HD toughened glass and vandal proof housing provides protection against the intrusion of burglar, dust, accidental contact, and water.

AirLive CamPro Express

The AirLive CamPro Express supports up to 32 cameras, providing a fully integrated surveillance and alarm management solution. The AirLive CamPro Express is available as a freeware for you to do the centre monitor.

Web Monitor

The CamPro Express allows you to monitor 32 channels via the computer and WEB UI. You can also choose to view the different camera in single view or 1/4/9/16/32 view.



Specifications

Hardware

Image Device

- 1.3M Mega-pixel image sensor

Effective Pixels

- 1280 x 1024 pixels

Sensitivity

- 1.0V/lux-sec (550nm)

Signal to Noise

- 44dB

Lens

- 4-9mm Vari-focal lens

IP Module

Video

Video Encoder

- H.264, MPEG4 and Motion JPEG simultaneously (Tri-encoders)

Video Profile

- 11 profiles simultaneously
- H.264 SXGA/ VGA / QVGA / QQVGA
- MPEG4 VGA / QVGA / QQVGA
- M-JPEG SXGA/ VGA / QVGA / QQVGA

Frame Rate

- Mega-pixel mode: Up to 15fps for all 11 profiles
- VGA mode: Up to 30fps for all 9 profiles

Image Setting

- De-noise
- Brightness, sharpness, contrast text, time and date overlay

Streaming

- Simultaneously multi-profile streaming
- Streaming over UDP, TCP, or HTTP

- Multicast streaming
- M-JPEG streaming over HTTP
- Supports 3GPP mobile surveillance
- Controllable frame rate and bandwidth
- Constant and variable bit rate (MPEG4 / H.264)

Audio

Audio Encoder

- RTSP: G.711 64kbps, G.726 32kbps
- 3GPP: AMR

Audio Streaming

- Two-way

Microphone

- External microphone input

Audio Output

- Line level out

Network

Supported Protocols

- TCP, UDP, HTTP, SMTP, FTP, NTP, DNS, DDNS, DHCP, ARP, Bonjour, UPnP, RTSP, RTP, RTCP, PPPoE, 3GPP, ICMP, SAMBA

Security

- Password protection, IP address filtering, user access log

Users

- 20 simultaneous unicast users
- Unlimited users using multicast

Ethernet

- 10/100M auto negotiation

System Integration

Application Programming Interface

- Open API for software integration
- SDK

Alarm Triggers

- Intelligent video motion detection and external input

Motion Detection

- 10-zone video motion detection

Alarm Events

- Event server: FTP server, SMTP server, Samba server.
- File upload video clip or snapshot
- Notification via email, HTTP, and TCP
- External output activation
- Go to PTZ preset position (RS485)
- Audio alerting output

Video Buffer

Pre- and post- alarm buffering

General

Power Supply

- 12V DC external power adapter

PoE

- IEEE 802.3af

Power Consumption

- 5W max

Connectors

- RJ-45 10BaseT/100BaseTX
- DC jack
- Audio in/out
- 1 alarm input and 1 output
- RS485

Indication LED

- Two LEDs

Protection Class

- IP66 outdoor use, Vandal and weather proof

Construction

3-axis mechanical design

Operating Temperature

- 20°C to 40°C (32°F to 104°F)

Operating Humidity

- 20% ~ 80% (non-condensing)

Viewing System

OS

- Windows® XP, Vista

Browser

- IE 6.0 or latter / Firefox 2.0 or later / Safari

Cell Phone

- With 3GPP player

Video Player

- VLC, Quick Time, Real Player

Software

Search & Installation

- IPWizard II

Bundled NVR Program

- CamPro Express 32 Channels

Ordering Information:

AirCam POE-250HD H.264 1.3 MegaPixel POE Vandal Proof Dome