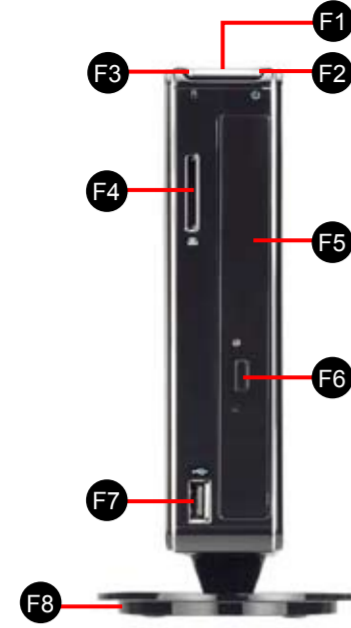


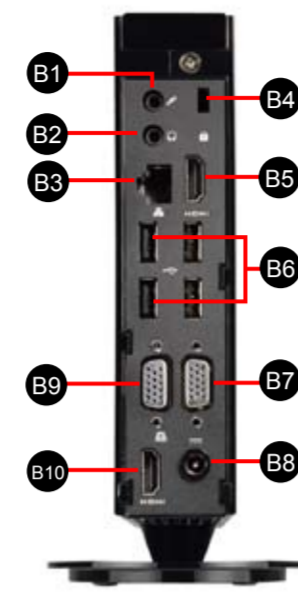
## Front Panel

- F1. Power Button
- F2. Power Status LED
- F3. HDD Status LED
- F4. SD Card Reader
- F5. ODD/ Second HDD (Optional)
- F6. ODD Eject Button
- F7. USB 2.0 Port
- F8. Vertical Stand

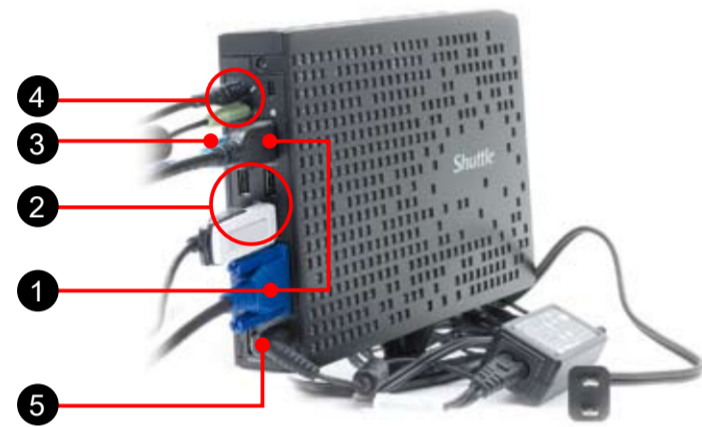


## Back Panel

- B1. Microphone Jack
- B2. Headphone/Line-out Jack
- B3. LAN Port
- B4. Kensington Lock
- B5. HDMI Port (XS35V3L only)
- B6. USB 2.0 Ports
- B7. D-Sub (VGA) Port (XS35V3L only)
- B8. Power Jack (DC-in)
- B9. D-Sub (VGA) Port (XS35GS V3L only)
- B10. HDMI Port (XS35GS V3L only)



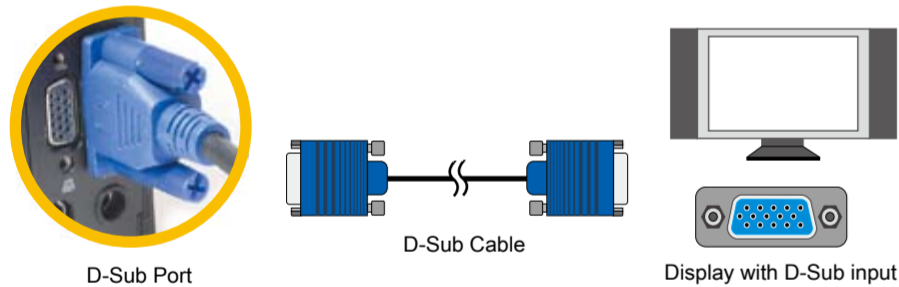
## Connecting the System



### 1 Connecting Monitor or LCD TVs

Digital and analog connections are available so the device can be connected to computer monitors, flat-panel displays, plasma or LCD TVs.

➤ **Analog:** Connect this to your computer monitor or LCD TVs.



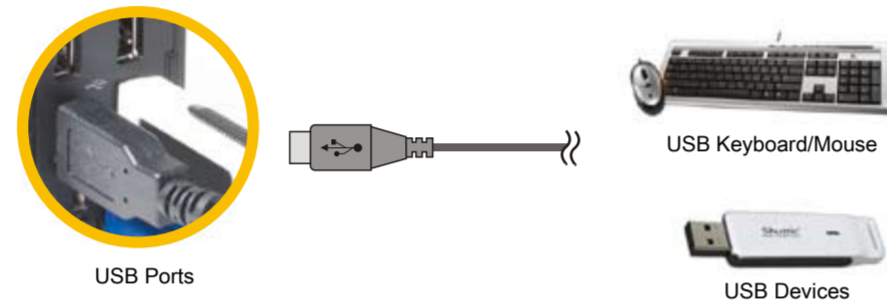
➤ **Digital:**  
Connect this to your HDMI-enabled computer monitor, plasma or LCD TV.



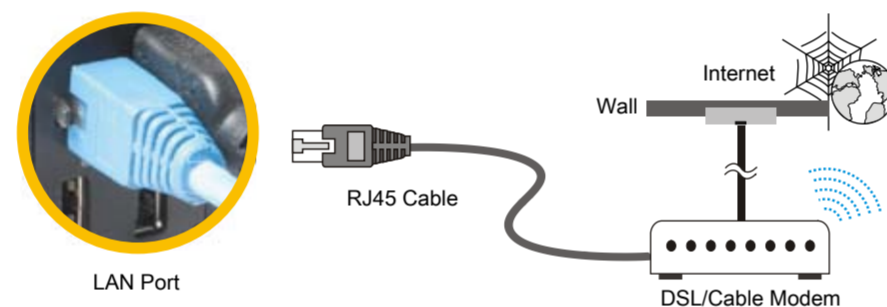
➤ **Connecting HDTV or external amplifier with HDMI output**  
Supports HDMI 1.3 standard with the ability to transmit audio and video signal over the HDMI cable.



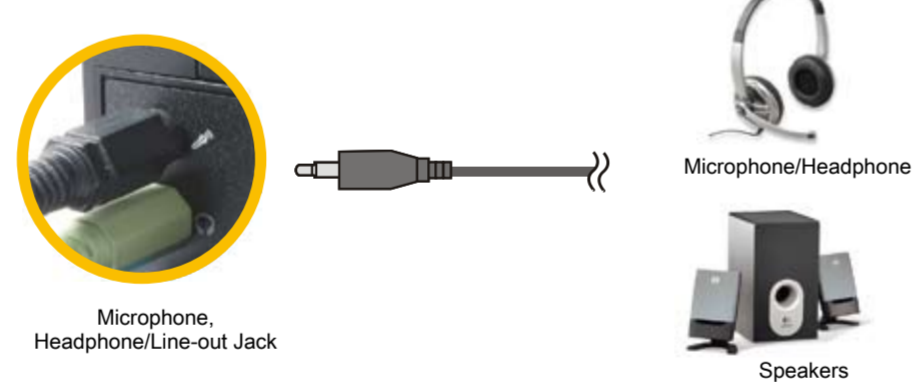
### 2 Connecting Keyboard/Mouse or USB Devices



### 3 Connecting LAN



### 4 Connecting Speakers and Microphone



### 5 Connecting Power



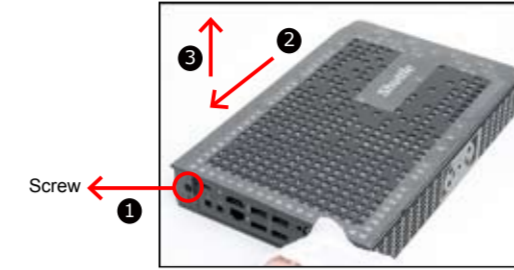
### 6 Powering on the system



## A. Begin Installation

⚠ For safety reasons, please ensure that the power cord is disconnected before opening the case.

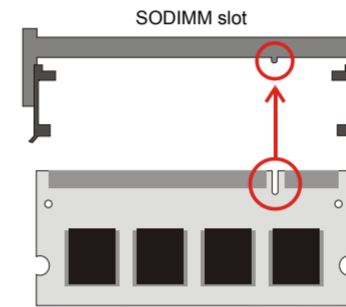
1. Unscrew one screw of the chassis cover.
2. Slide the cover backwards and upwards.



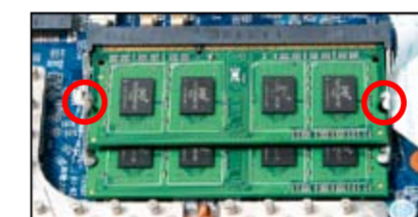
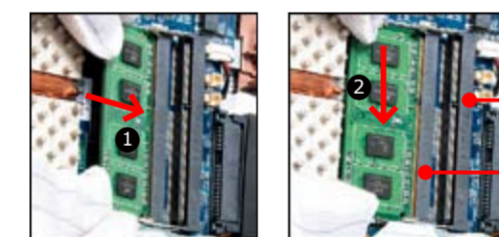
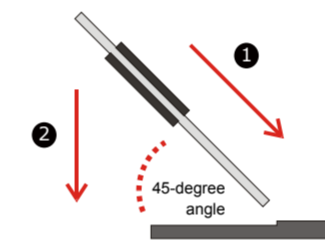
## B. Memory Module Installation

⚠ If you install only one memory module in your system, install it in the slot labeled "DIMM2".

1. Locate the SODIMM slot on the mainboard.
2. Align the notch of the memory module with the one of the memory slot.



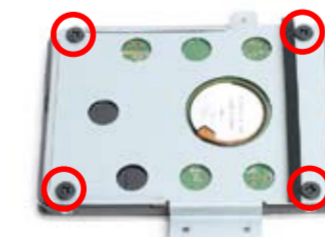
3. Gently insert the module into the slot in a 45-degree angle.
4. Carefully push down the memory module until it snaps into the locking mechanism.



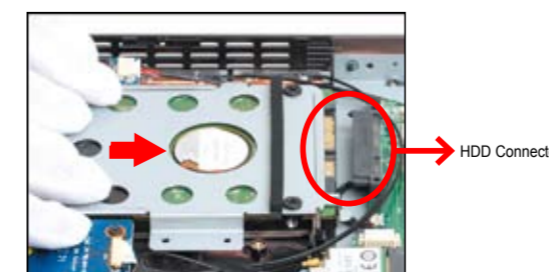
5. Repeat the above steps to install additional memory modules, if required.

## C. HDD Installation

1. Mount HDD into the bracket with four screws.



2. As shown, install the HDD & bracket in the chassis and push it towards the direction as indicated by the red arrow to connect the HDD connector.



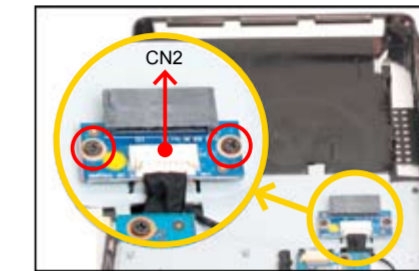
3. Tighten the HDD & bracket with three screws.



## D. ODD or Second HDD Installation

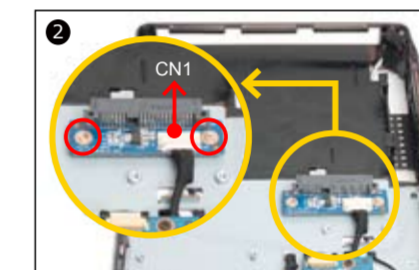
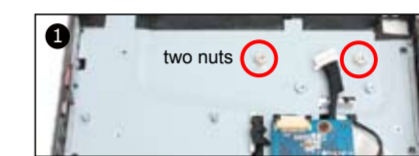
1. Turn your XPC upside down and remove another cover.
2. As shown, install the ODD/HDD Adapter Card with two screws and connect the cable to CN2/CN1.

➤ For the ODD: install the ODD Adapter Card



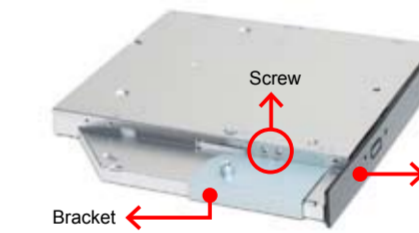
➤ For a second HDD: install the HDD Adapter Card

⚠ If you are installing a second HDD, tighten the two nuts first just as shown.

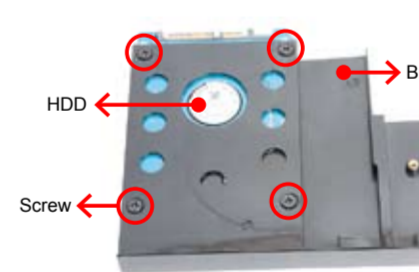


3. Mount ODD/HDD into the bracket with screws.

➤ For the ODD

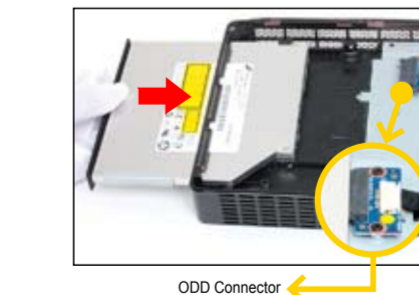


➤ For a second HDD

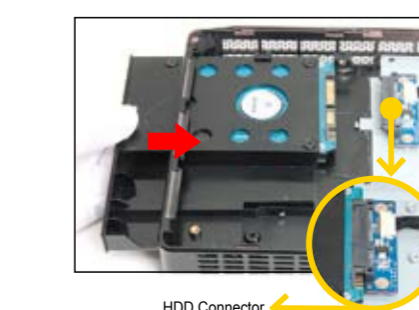


4. As shown, install the ODD/HDD & bracket in the chassis and push it towards the direction as indicated by the red arrow to connect the ODD/HDD connector.

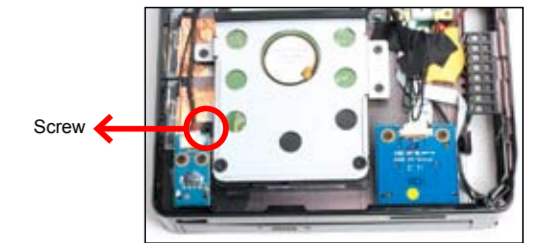
➤ For the ODD



➤ For a second HDD

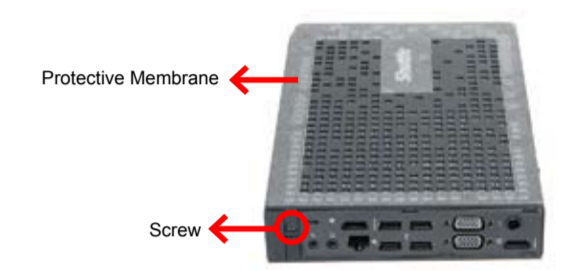


5. Turn your XPC upside down and tighten the ODD/HDD & bracket with one screw.

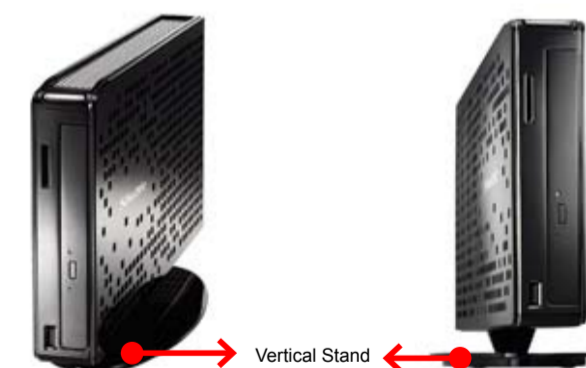
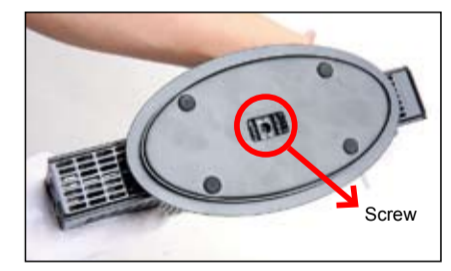
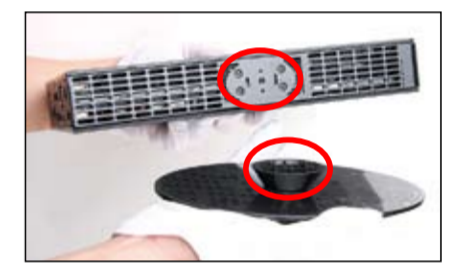


## E. Complete

1. Replace the cover and refasten one screw.
2. Tear off the double sided protective membrane.



➤ Using the Vertical Stand  
Install vertical stand and check that it is properly aligned, then tighten securely with one screw.



## Safety Information

Read the following precautions before setting up a XPC.

**CAUTION**  
Incorrectly replacing the battery may damage this co-puter. Replace only with the same or equivalent type recommended by the manufacturer. Disposal of used batteries according to the manufacturer's instructions.

Laser compliance statement  
The optical disc drive in this PC is a laser product. The drive's classification label is located on the drive.  
CLASS 1 LASER PRODUCT  
CAUTION: INVISIBLE LASER RADIATION WHEN OPEN.AVOID EXPOSURE TO BEAM.