

Quick Installation Guide

Wireless-N Broadband Router

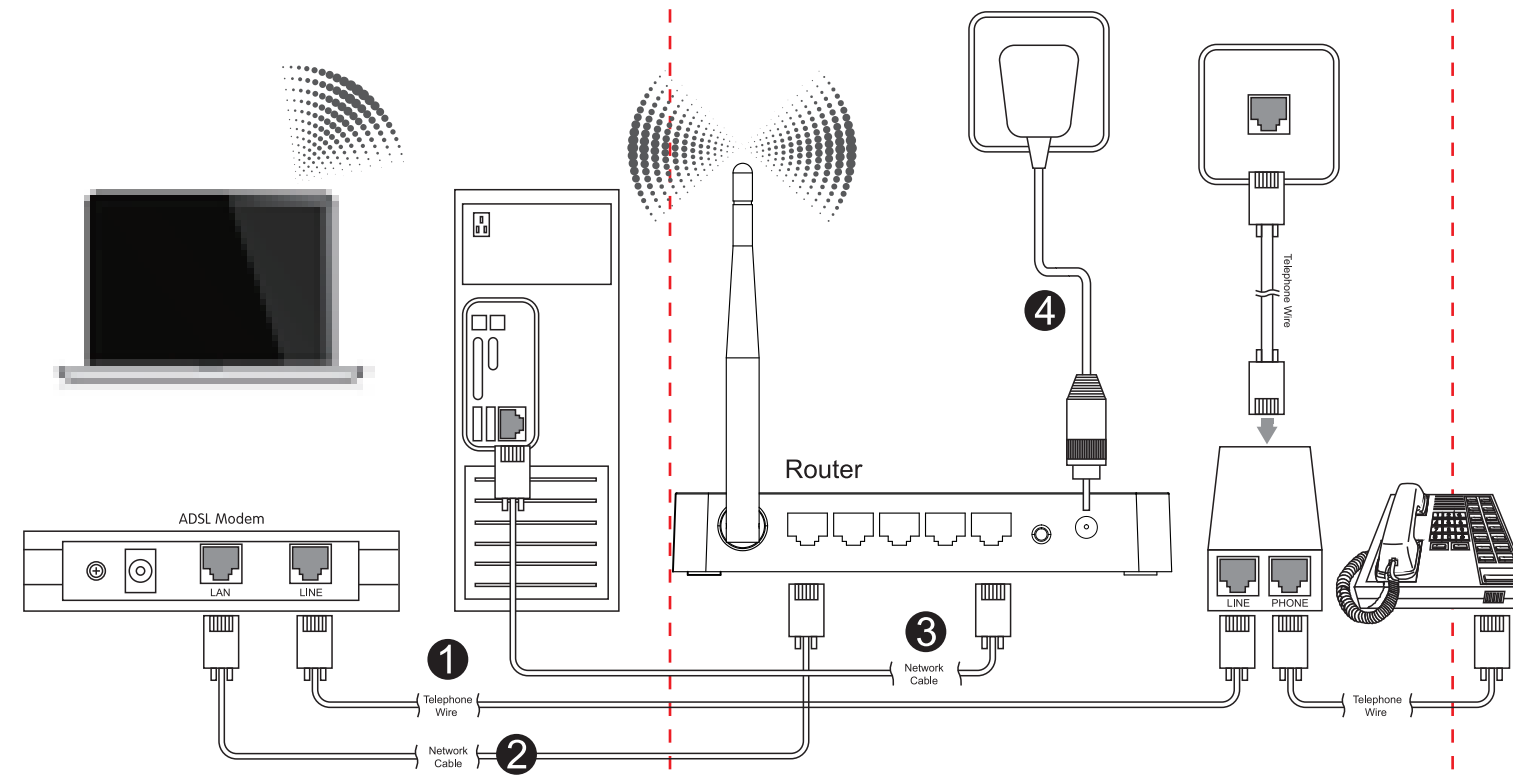
Suitable for: N150RH, N300RH, N150RT, N151RT, N300RT



Copyrights 2013 by TOTOLINK All rights reserved. Website <http://www.totolink.net>
Information in this document is subject to change without prior notice.

1 Hardware Installation

If you access Internet by ADSL, please comply with step 1, 2, 3 and 4 in below diagram in correct order; if you access Internet by residential broadband, please comply with step 2, 3 and 4 to connect the WAN port of your router with the residential broadband directly.



After connected, please check whether the indicator lights are normal.

Name	Normal Status
POWER	This indicator lights blue when the router powered on, otherwise it is off.
CPU	This indicator blinks blue when router powered on.
WLAN	This indicator blinks blue when there are wireless devices connected and transmitting data to the router.
WAN	On: When the WAN port is connected successfully the indicator lights blue.
	Blink: During transmitting or receiving data through the WAN port the indicator blinks blue.
	Off: There is no device linked to the WAN port.
1/2/3/4 LAN	On: When the LAN port has a successful connection, the corresponding indicator lights blue.
	Blink: During transmitting or receiving data through the LAN port the corresponding indicator blinks blue.
	Off: There is no device linked to the LAN port.

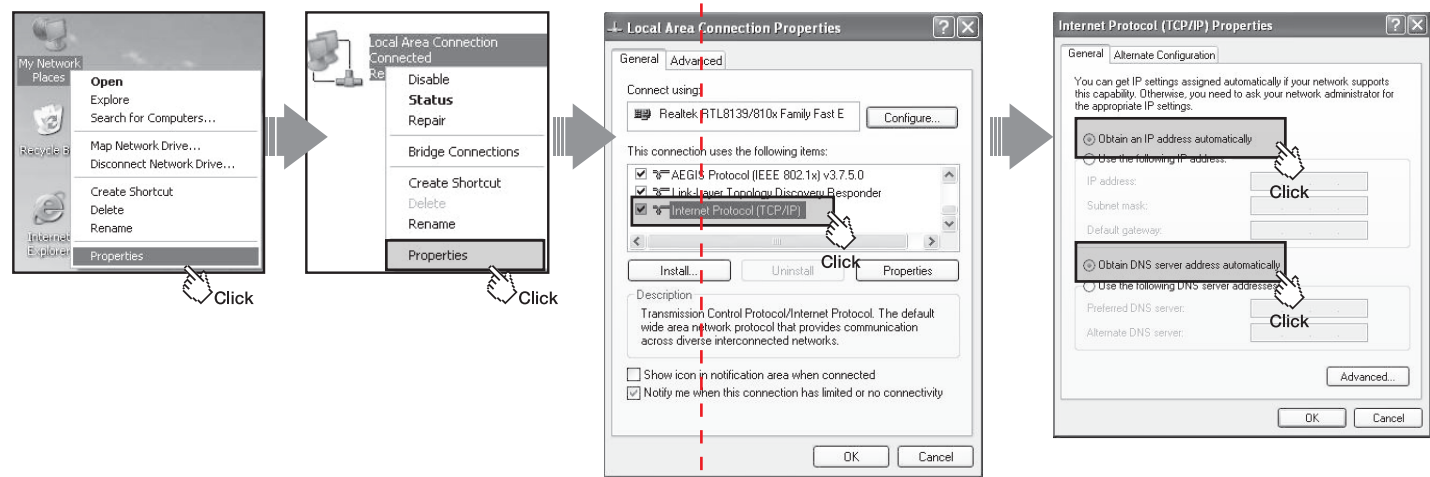
NOTE:

1. Please disconnect the power adapter and all cables during thunderstorm weather;
2. Keep away from heat source and keep well ventilated;
3. Please pay attention to the waterproofing and moisture-proof when storing, transporting and running.
4. The power supply must reach the rated current and power.
5. Put the router in flat places.

2 Set Up PC

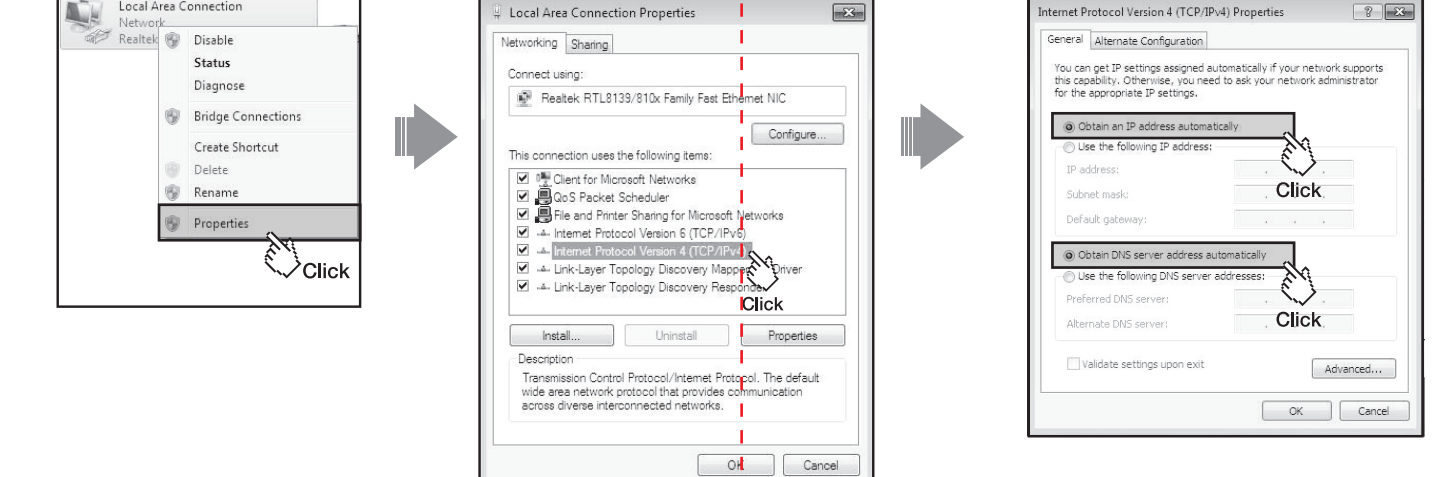
Windows 2000/XP For Windows 2000 or Windows XP Operating System, please comply with following steps to set up.

1. Right-click "My Network Places", click "Properties"
2. Right-click "Local Area Connection", click "Properties"
3. Double-click "Internet Protocol (TCP/IP)"
4. Choose "Obtain an IP address automatically" and "Obtain DNS server address automatically", click "OK"; go back to previous interface and click "OK"



Windows Vista/7 For Windows Vista or Windows 7 Operating System, please comply with following steps to set up.

1. Click "Start—Control Panel—Network and Internet—Network Connection", right-click "Local Area Connection", and choose "Properties".
2. Double-click "Internet Protocol Version 4 (TCP/IPv4)"
3. Choose "Obtain an IP address automatically" and "Obtain DNS server address automatically", click "OK"; go back to previous interface and click "OK"



3 Set Up Router

Please set up the router following below steps.

1. Run the Web browser.
 - Click
2. Type 192.168.1.1 in the web browser, then press Enter key.
 - Address:
3. Enter User Name and Password (the default User Name and Password are "admin"), then click OK or press Enter key.
 - User name:
 - Password:
 - Remember my password
 - OK Cancel
4. Click Setup Wizard on the navigation bar on the left.
 - Status
 - Setup Wizard
 - Setup Wizard
 - TCP/IP Settings
 - Wireless
 - Route Setup
 - Firewall
 - Management
 - Advanced
5. Click Next to begin setup wizard.
 - SETUP WIZARD
 - The setup wizard will guide you to configure access point for first time. Please follow the setup wizard step by step.
 - 1. Setup Operation Mode
 - 2. Choose your Time Zone
 - 3. Setup WAN Interface
 - 4. Setup LAN Interface
 - 5. Wireless Basic Setting
 - 6. Wireless Security Setting
 - Next
6. The default mode is Router. Click Setup Operation Mode Button if you want to choose other modes. Else click Next.
 - 1. MODE
 - This page shows you the selected router mode.
 - Router
 - In this mode, the device is supposed to connect to internet via ADSL/Cable Modem. The NAT is enabled and PCs in LAN ports share the same IP to ISP through WAN port. The connection type can be setup in WAN page by using PPPoE, DHCP client, PPTP client, L2TP client or static IP.
 - Cancel <<Back Setup Operation Mode Next>>
7. You can specify the device's time zone according to GMT (Greenwich Mean Time) and then click Next.
 - 2. TIME ZONE SETTING
 - You can maintain the system time by synchronizing with a public time server over the Internet.
 - Enable NTP client update
 - Automatically Adjust Daylight Saving
 - Time Zone Select: GMT+03:00(Moscow, St. Petersburg, Volgograd)
 - NTP server: 192.5.41.41 - North America
 - Cancel <<Back Next>>
8. After Configured the IP address and Subnet Mask for LAN, please click Next.
 - 3. LAN INTERFACE SETUP
 - This page is used to configure the parameters for local area network which connects to the LAN1 port of your Access Point. Here you may change the setting for IP address, subnet mask, DHCP, etc.
 - IP Address: 192.168.1.1
 - Subnet Mask: 255.255.255.0
 - Cancel <<Back Next>>

4 Wireless Network Connection

1. Right-click "My Network Places", click "Properties"
2. Right-click "Wireless Network Connection", and click "View Available Wireless Networks"
3. Confirm the wireless network SSID name, choose one that you would like to connect, then click "Connect"
4. Input the encryption key and click "Connect"
5. Have connected wireless network, you can access internet through wireless mode.
9. Choose the WAN connection type and enter the parameters provided by your ISP.
 - 4. WAN INTERFACE SETUP
 - This page is used to configure the parameters for Internet network which connects to the WAN port of your Access Point. Here you may change the access method to static IP, DHCP, PPPoE, PPTP or L2TP by click the item value of WAN Access type.
 - WAN Access Type: PPPoE/Dual WAN Access PPPoE
 - WAN DHCP Type: DHCP Client Static IP Normal PPPoE
 - IP Address: 0.0.0.0
 - Subnet Mask: 0.0.0.0
 - Default Gateway: 172.11.254
 - User Name:
 - Password:
 - Cancel <<Back Next>>
10. Enter the parameters of Wireless Basic Settings, click Next.
 - 5. WIRELESS BASIC SETTING
 - This page is used to configure the parameters for wireless LAN1 clients which may connect to your Access Point. Here you may change wireless encryption settings as well as wireless network parameters.
 - Band: 2.4 GHz (B-G-N)
 - Mode: AP
 - Network Type: Infrastructure
 - SSID: TOTOLINK
 - Channel Width: 40MHz
 - Control Channel: Uplink
 - Channel Number: 11
 - Cancel <<Back Next>>
11. For a secure connection, WPA2 Mixed is recommended for you to protect your network.
 - 6. WIRELESS SECURITY SETUP
 - This page allows you setup the wireless security. Turn on WEP or WPA by using Encryption Keys could prevent any unauthorized access to your wireless network.
 - Encryption: WPA2 Mixed
 - Pre-Shared Key Format: Password
 - Pre-Shared Key:
 - Cancel <<Back Filtered

NOTE:
After you set the Pre-Shared Key, please remember your SSID and the Pre-Shared Key to connect with your wireless LAN.
Press for about 2-3 seconds, the system LED indicator keep solid light, it means WPS working, while press for about 10 seconds, all LEDs blinks quickly, the device will restore to factory default settings.