

## FE-501OD

### 5MP Fisheye Outdoor IP67 PoE Camera

- Maximum 15fps@1920x1920
- H.264 MPEG4 and MJPEG Encoder
- Hardware Dewarp via Fisheye Processor
- Minimum 0.1 Lux for Night Vision
- ROI (Region of Interest) with e-PTZ Function
- Removable IR-Cut Filter
- WDR Enhancement
- 5 Independent Streams
- Up to 64GB MicroSD Card Local Storage
- 802.3af PoE
- IP67 Weather-Proof Housing
- OnVIF Supported



**A**irLive FE-501OD is a fisheye panorama network outdoor dome camera featured with 5 MegaPixel resolution and rich functions. The fisheye lens provides 360° panoramic wide-angle view without blind spot. It is very suitable to view in a wide area, such as parking lot, airport, theme park, with one single camera.



360° Source View



Quad View



3 PTZ with source View



IP67 Weather-Proof Housing



### IP67 Weather-Proof Housing

AirLive FE-501OD is an outdoor fisheye dome camera with IP67 rated weather-proof housing to protect your camera from rain and dust.

Manufacturer

**OvisLink Corp.**

5F, No.96, Min-Chuan Rd., Hsin-Tien Dist., New Taipei City 231, TAIWAN

[www.airlive.com](http://www.airlive.com)

### High Quality 5.0 MegaPixel Image

AirLive FE-501OD equips a 5 MegaPixel sensor for capturing the high quality video stream. With this sensor, FE-501OD is capable to capture images up to 1920 x 1920 resolution; this provides you more details in image at all types of view.

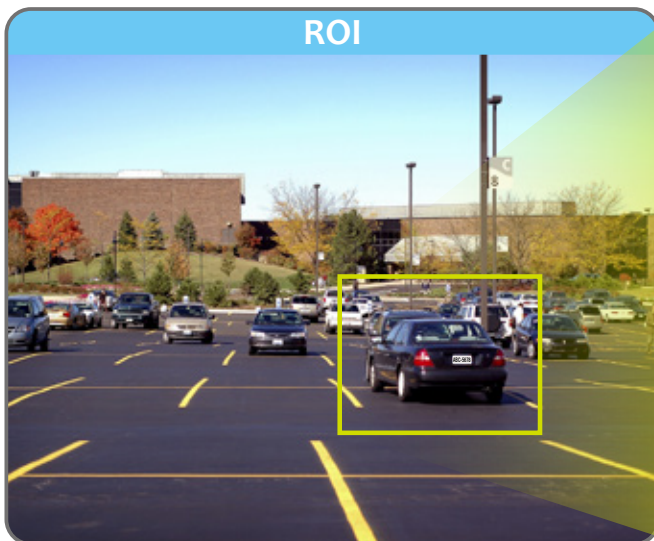


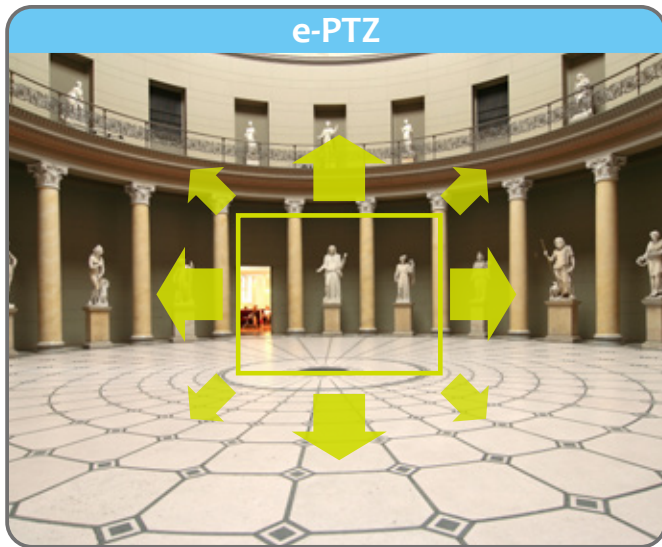
### 5 Independent Streams

AirLive FE-501OD equips with 5 independent streams at ROI mode. Each split screen is independent for storage and connect individually to save your bandwidth and loading in your computer.

### ROI with e-PTZ Function

AirLive FE-501OD also equipped with ROI (Region of Interest) feature. The ROI displays a selected area from main screen to split screen. It provides more details of image without changing the view.

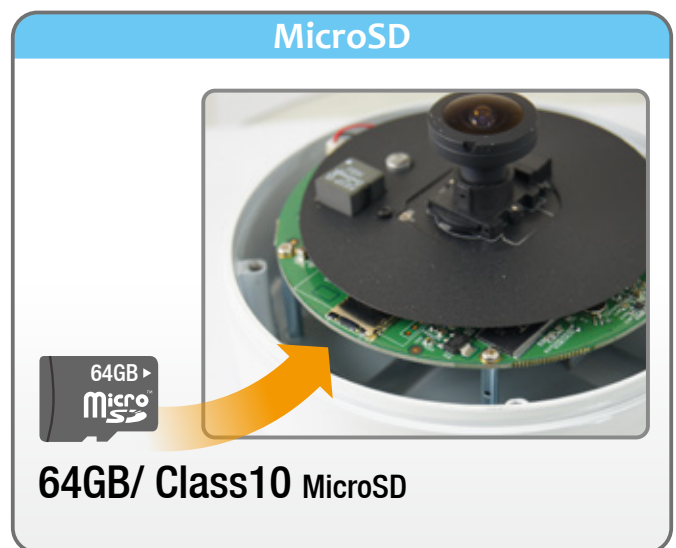




Using the e-PTZ function, all view angles can be adjusted by a “mouse-click” to simulate Pan, Tilt and Zoom function on each split screen, which provides you extra convenience and security.

### Up to 64GB MicroSD Local Storage or Remote Save Path

MicroSD card becomes more popular for local storage in IP cameras. Once you setup the camera and MicroSD card correctly, you may easily save the video to MicroSD local storage or to the remote via network.



64GB/ Class10 MicroSD

### Support Built-in Microphone and Speaker

AirLive FE-501OD has the built-in microphone and speaker, so a user can use two-way audio function without external audio devices.

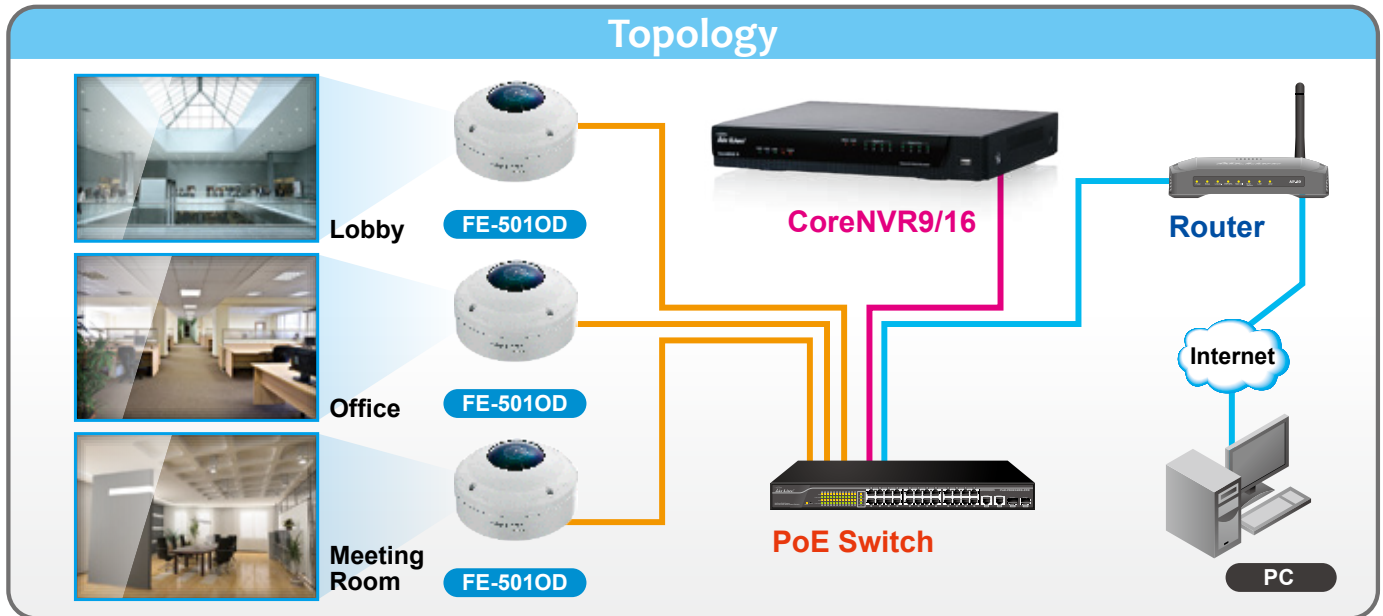
### Free 64 Channel Live View and Recording through CamPro Express

The FE-501OD also supports CamPro Express, the free bundle VMS software that lets user to view and record multiple channels simultaneously. Therefore, you may easily build up a surveillance system at different environments.



## Connect to CoreNVR9/16

AirLive CoreNVR9/16 is a standalone system which is able to connect multiple cameras to a machine for professional management with many useful features. It also supports up to 256 channel free CMS software to manage multiple CoreNVR systems. It is the most efficient way to manage your cameras under the network.



## CamPro Mobile



## Live viewing on iOS and Android Mobile Devices

### Multimedia Cable for FE-501OD (Optional)

The ACC-MMC-FE is an optional multimedia cable for FE-501OD. This cable provides the functions of DI/DO, two-way audio and a BNC video output. All signals through this cable are protected by a built-in waterproof RJ-45 connector.

## CamPro Mobile for iOS and Android

The FE-501OD can be connected by your iPhone/iPad and Android devices via AirLive CamPro Mobile APP, so you may easily access FE-501OD whenever you have network connection for live viewing and even playback the video event online on your mobile devices.



Manufacturer

**OvisLink Corp.**

5F, No.96, Min-Chuan Rd., Hsin-Tien Dist., New Taipei City 231, TAIWAN

[www.airlive.com](http://www.airlive.com)

## ACC-WMK-FE



## Wall Mount Kit for FE-501OD (Optional)

The ACC-WMK-FE is an accessory wall mount kit for FE-501OD. This cable through metal made wall mount kit with IP67 rated weatherproof housing protects FE-501OD from severe environment.

### Specifications

#### Camera

##### Camera Type

- Fisheye Type

##### Image Sensor

- 1 / 2.5" CMOS Sensor
- in 2592 x 1944 resolution

##### Max. Resolution

- 1920x1920

##### Field of View

- 180° (Horizontal/Vertical/Diagonal)

##### Lens Type

- 1.05 mm

##### Day/Night

- Removable IR-Cut for Day/Night image

##### WDR Enhancement

- Yes

##### Minimum Illumination

- Color: 1.9 Lux@F2.8
- B/W: 0.1 Lux @F2.8

##### Mechanical IR-Cut Filter

- Yes

##### Pan/Tilt/Zoom

- E-PTZ with 10x Digital Zoom

##### Video

##### Video Compression

- H.264, MJPEG & MPEG4

##### Video Mode

- 360° Source View, 360° Broad View,
- 180° Double Broad View,
- Triple View, Quad View,
- 3 PTZ with Source View,

##### Resolution and Frame Rate

- 15fps@ 1920x1920
- 15fps@ 1620x1080
- 30fps@ 1600x1200
- 30fps@ 640x480

Manufacturer

**OvisLink Corp.**

5F, No.96, Min-Chuan Rd., Hsin-Tien Dist., New Taipei City 231, TAIWAN

[www.airlive.com](http://www.airlive.com)

### **Streaming**

- 5 simultaneous streams at ROI Mode
- 3 simultaneous streams at Normal Mode
- Streaming over UDP, TCP, HTTP
- ROI (Region of Interest) Provide for 5 Independent Streams
- Configurable frame rate and bandwidth
- Support CBR and VBR

### **Image Setting**

- AE, AWB
- Noise Reduction
- Exposure Value / Saturation / Brightness / Sharpness / Contrast
- auto gain control
- Mirror / Flip
- EV luminance control
- Privacy Mask
- Text, Time and Date OSD

### **ROI**

- Provide for 5 Independent Streams

### **Digital Zoom**

- 10x

### **Network**

#### **Ethernet**

- 10/100M Auto Negotiation

#### **Network**

- IEEE 802.3af PoE

#### **Protocols**

- HTTP,HTTPS, TCP/ IP,IPv4, UDP, SMTP, FTP, DHCP, DDNS, NTP, DNS, ARP,RTSP, RTP, UPnP, OnVIF(Profile S), Multicast

#### **Users**

- 10 Simultaneous Unicast Users

#### **Security**

- Password Protection
- IP Address Filtering
- User Access Log

### **Audio**

#### **Audio Encoder**

- G.711u

#### **Audio Streaming**

- Two-Way Audio

#### **Audio Input / Output**

- Built-in Microphone and Speaker

### **System Integration**

#### **Software**

- CamPro Express 64, CamPro Professional
- Search & Installation- IP Wizard II

#### **Event Triggers**

- Motion detection
- Manual trigger
- Periodical trigger
- Digital input
- System boot
- Recording notification

#### **Motion Detection**

- Up to 10 zones

#### **Application Programming Interface**

- OnVIF
- Open API for Software Integration

#### **Video Buffer**

- Max. 10sec Pre-Alarm
- Max. 10sec Post-Alarm

#### **Alarm Events**

- HTTP, SMTP, FTP and NAS server

#### **Continuous Recording**

- Continue Recording to SD / NAS server

#### **Certificate**

- CE, FCC Class B, LVD

## Viewing System

### OS

- Windows® 2000, XP, Vista, 7, 8

### Browser

- IE 7.0 or later, Firefox, Safari, Chrome

### Mobile Device

- iOS, Android

## General

### Power Supply

- DC12V/1A
- 802.3af PoE

### Power Consumption

- Max. 5.1W (DC12V)
- Max 5.3W (PoE)

### Connectors

- RJ-45 cable connector for Network/PoE connection
- Audio input
- Audio output
- DC 12V power input
- Digital input\*1
- Digital output\*2
- MicroSD Card Slot
- Reset Button

## Environment

- Operation Temp: 0°C ~ 50°C
- Humidity: 10% ~ 80%

## Dimensions

- 140 x 78.4mm

## Weight

- 970g

## Housing

- Weather-proof IP67 protection

## MicroSD card slot

- SDHC/SDXC 64GB

## Ordering Information:

**AirLive FE-501OD** 5MP Fisheye Outdoor IP67 PoE Camera