

- ADSL2/2+ High Speed Broadband Service
- Triple Play for IPTV, Internet and Voice
- Small, Medium Scale NGN Network
- Highly Compatible FTTx Solution
- RSTP for Fiber redundancy
- Compact Size in Outdoor Cabinet: 4.4(H) x 44(W) x 28(D) (cm)
- Harden: -30°C to 65°C (-22°F to 149°F)

To meet the increasing demand for high-speed Internet access and voice services. The VigorAccess A48 series use the most advanced ADSL2+ technology to provide high-speed interactive application on copper wire.

The next generation network offers a feasible functionality of integrated services with the most cost effective architecture. It can provide rich content, DSL, POTS and VoIP services over traditional copper wire infrastructure. These three types of service will be supported on NGN architecture simultaneously. DSL is used as the data service platform, and VoIP or traditional POTS technology is a basis of the voice service. The multimedia and local content-rich applications can also be easily implemented on this NGN architecture.

The VigorAccess A48 series can be easily configured by EMS. The EMS system covers topology, configuration, security, alarm management and back/restore.

### Scalable

The system is designed to be stackable with uplink Ethernet interface expansion. The port number is up to 144 ports with a combination of xDSL service. By using scalable architecture, equipment provider can scale up easily with benefit from low-initial investment cost as subscribers increase.

### Seamless Rate Adaptation (SRA)

The SRA is on-line configuration mechanism specified in ITU-T Rec. G.992.5. By using SRA, the downstream net data rates during showtime shall be automatically increased and decreased according to the line condition.

### QoS Guaranteed

To ensure appropriate QoS, the telephone traffic is prioritized and assigned to a service flow, which is handled by ToS control and TCP/IP throttling. IP DSLAM should implement the IP packet classification function to support priority data flow to guarantee the quality of service. It might be necessary to assign voice packet a higher priority queue and assign data a lower priority queue.

### Broadband Access for Building Complex Community and Campus,

For multi-tenant unit(MTU) building like hotels, community and commercial, the VigorAccess series provide cost-effective, flexible and easy deployment of Internet access, gaming, and video/audio services.

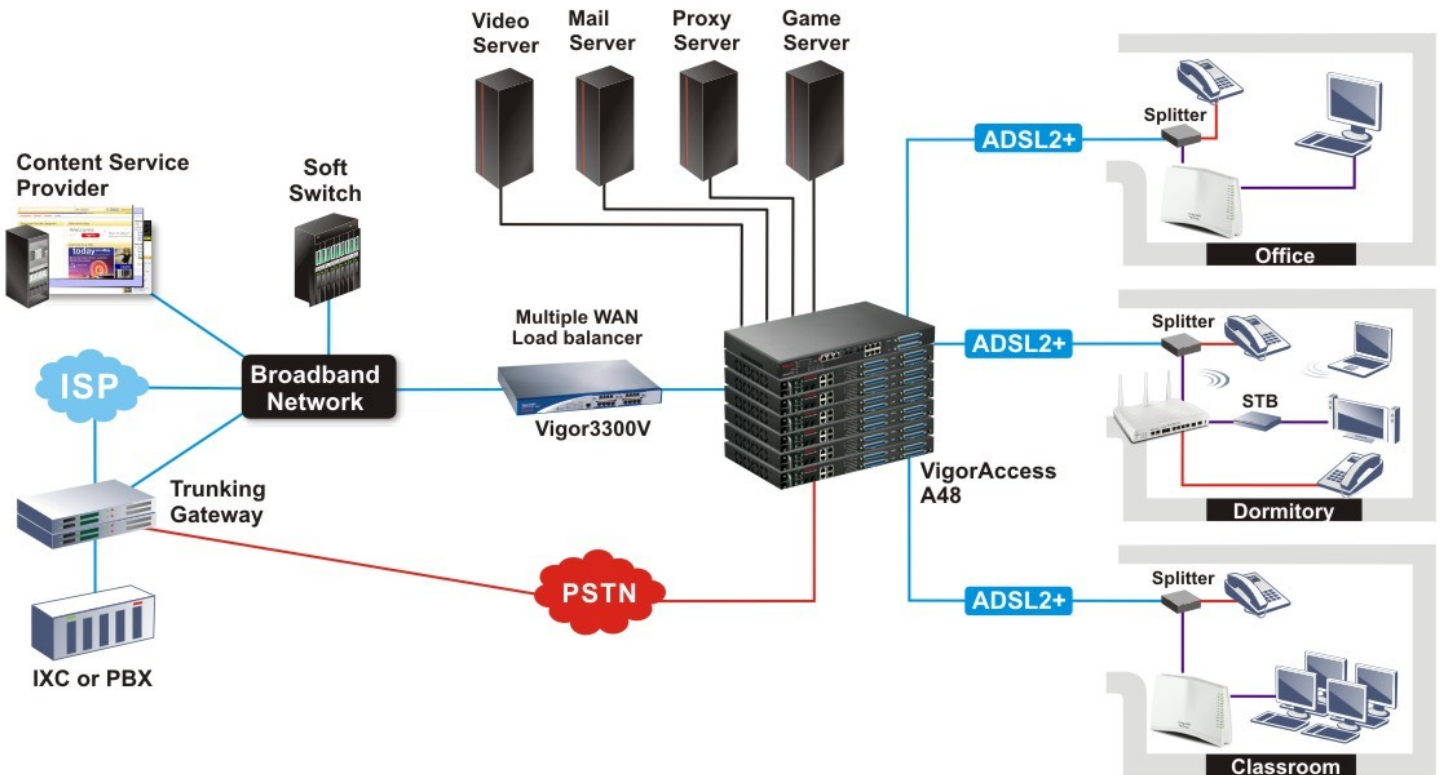
### No New Wiring Required

It's costly and annoying to wire inside building. Through current telephone line the VigorAccess series deploy service on current POTS wiring closet. No new wiring required.



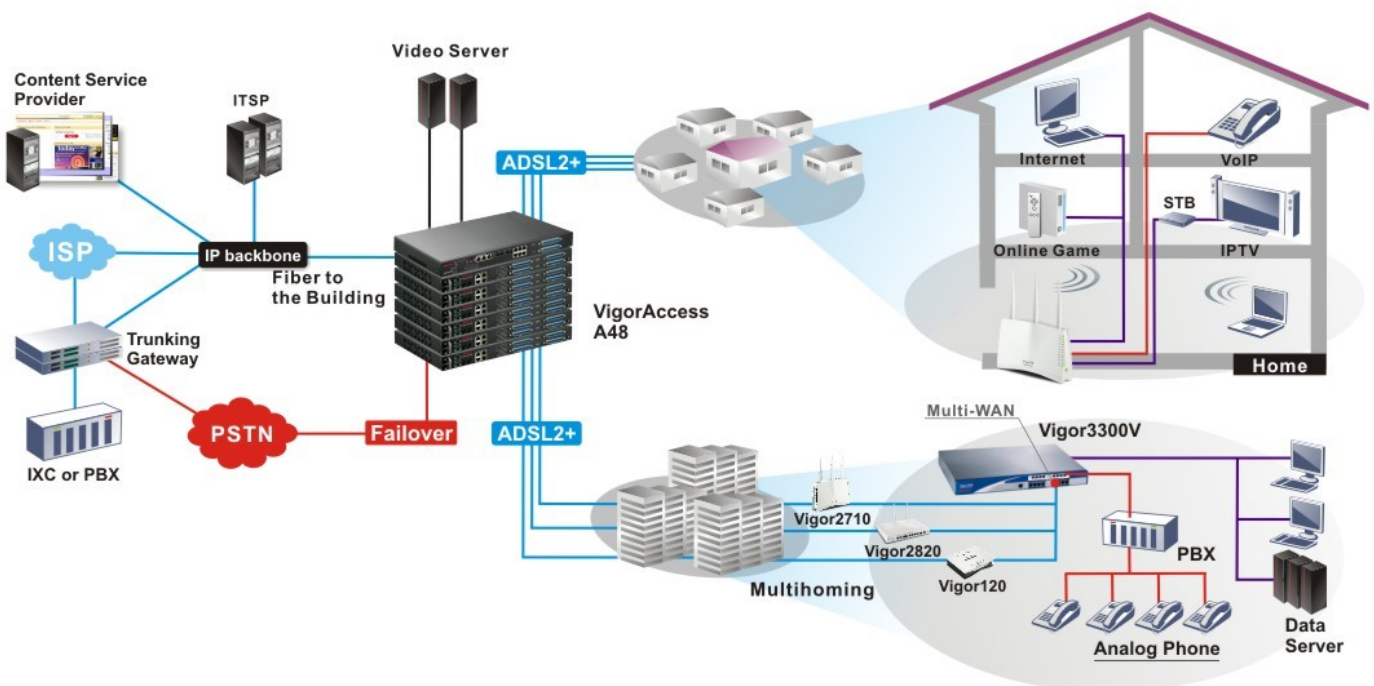
## Triple-Play Deployment

The triple-play applications will be more popular and the VigorAccess series support cost-effective delivery of data, voice and video services. The up to 24Mbps downstream, multiple PVCs, QoS, IGMP snooping and multicast capabilities can help you to offer the value-added services. Users can easily access Internet and use Stream TV, VoD and VoIP applications.



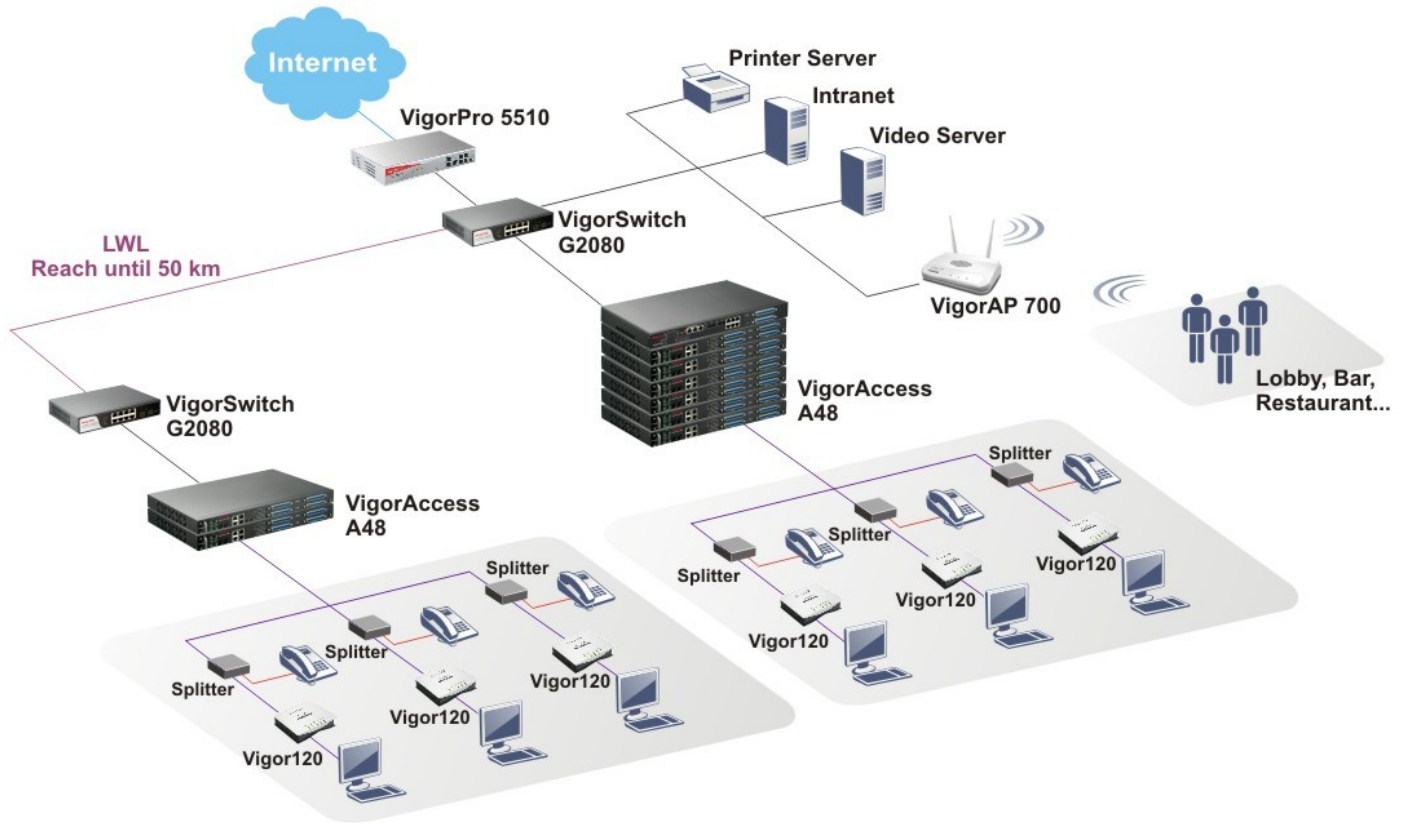
## Community Application

Many people live in the various high-density residential environment. The VigorAccess series can offer building complex, campus or community a complete network with rich services. These services include video on demand, remote monitor, building security, product browsing, and local LAN. The advantages of the system architecture facilitate local content management and reduce the content access cost by minimizing traffic loading of the outgoing link.



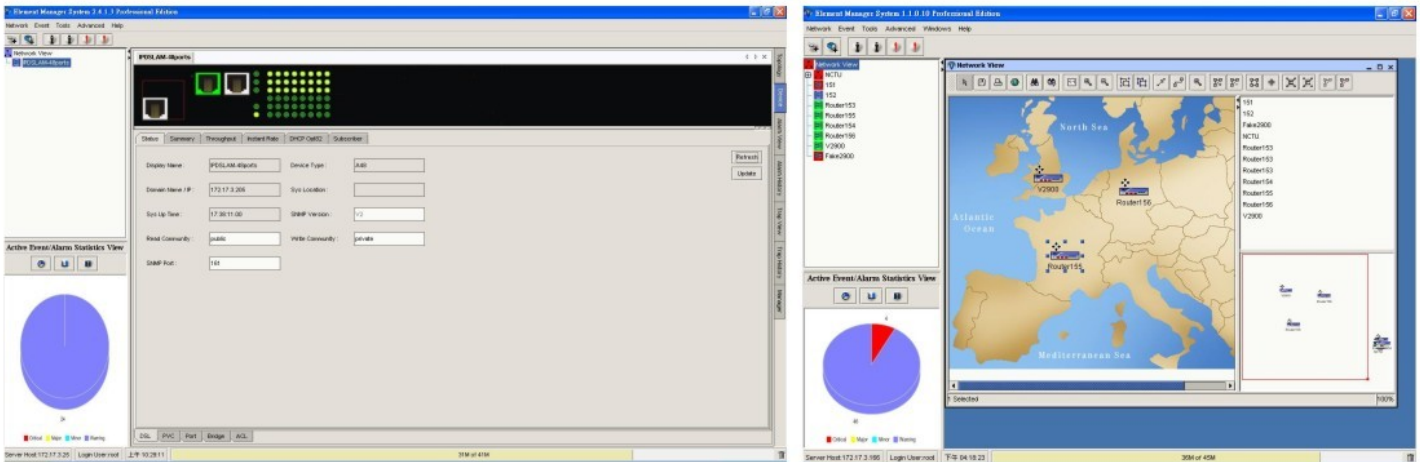


## Hospitality



## EMS Management - VigorCMS

DrayTek Element Management System - VigorCMS is a multi-tier architecture, flexible, easy to use for system management. It can manage up to 5000 devices, depends on the capacity of server. The VigorCMS provides configuration management, topology management, security management, fault management and back/restore management.



### Hardware Interface

- 2 x RJ-45 100Base-Tx/1000Base-T for Uplink/Subtend
- 2 x SFP for Fiber Module (Master)
- 2 x 48 Port 50-pin RJ-21 Champ Connector for DSL
- 2 x 48 port 50-pin RJ-21 Champ Connector for POTS
- 1 x RJ-45 Console Port
- 1 x RJ-45 for 2 in 1 out Alarm Contact

### ADSL2/ ADSL2+ Feature

- Backward Compatible to ITU-T G.992.1, G.dmt, ITU-T G.992.2, G.994.1(G.hs), G.lite, ANSI T1.413 issue 2, ITU-T G.992.3 ADSL2, ITU-T G.992.5 ADSL2+
- Upstream 3M Annex M and Long Reach DSL for Annex L of G.992.3
- Power Management Defined on G.992.3 and G.992.5
- SELT ( Single Ended Line Testing ) for ADSL
- DELT ( Dual End Loop Testing ) for ADSL2
- Fast Seamless Rate Adaptation ( Fast SRA )
- Dying gasp

### Encapsulation Mode

- RFC 2684 MPoA LLC/VCMUX
- PPPoA to PPPoE Conversion

### ATM Feature

- 8 PVCs per Subscriber Line
- F5 End-to-End and Segment-to-Segment OAM Loopback in I.610
- UNI 3.1 / 4.0 PVC
- VPI ( 0 - 255 ), VCI ( 0 - 65535 )
- Provide Incoming and Outgoing Rate Limit per PVC

### Bridge Feature

- IEEE802.1p CoS Prioritization
- IEEE802.1Q VLAN Support
- 802.1d STP
- MAC, Packet Filter and Classifier
- 4,000 MAC Addresses
- Support ICMP Request from VigorCMS or Management Tool
- DHCP Pass-through, Option 82 and Option 62 Insertion
- Port Isolation
- VPN IPsec /L2TP /PPTP Pass-through
- PPPoE Packet Forwarding
- Link Aggregation (802.3 ad)
- Port mirror
- ICMP
- MAC/IP Spoofing
- DHCP/DOS Prevention
- VMAC Translation
- Ethernet MAC Management
- RFC 2684 Routed Mode/ Bridged Mode
- PPPoE Transparency

### VLAN

- Support 4094, Concurrent 512 VLAN ID
- IEEE802.1Q Tagged-based VLAN
- VLAN ID Mapping to PVC
- GVRP /GARP
- Port-based VLAN

### QoS

- IEEE802.1p
- 4 Priority Queues for Multimedia Application
- Configurable Priority Mapping for PVC and IEEE802.1p
- Strict Priority
- Probabilistic Priority
- Customized Priority
- Rate Limit Control

### Multicast Feature

- IGMP snooping v1, v2 defined on RFC2236
- 256 multicast groups
- IGMP Proxy

### Management

- In Band or Out Band by Single IP Management
- SNMP v1.0 & v2c
- SNMP MIB for RFC1213, Ethernet , RFC2662, RFC3440 and Proprietary MIBs
- Standard SNMP Trap Report to VigorCMS or NMS
- TFTP Firmware Upgrade Utility via VigorCMS
- Telnet Server for Remote Management
- SNMP Enabled for Network Management Function
- Console or Telnet CLI for Configuration or Status Monitor
- Mac/IP Based ACL

### Environment

- Operation Temperature: -40° C to 65° C (-14° F to 149° F)
- Storage Temperature: -40° C to 85° C (-14° F to 185° F)
- Operating Humidity: 10% to 95% (non-condensing)
- Storage Humidity: 5% to 95% (non-condensing)

### Certification

- EMC: EN 55022 Class A, EN 55024, EN 300 386 V1.3.2
- Safety: EN60950-1

### Indicator

- Power, Active, Critical/Major/Minor Alarm, DSL for link Activity
- Power, Active, Critical/Major/Minor Alarm, DSL for link Activity(Slave)

### MTBF

- 55,000 hrs/40°C

### Dimension

- L440 \* W280 \* H45 (mm)

### Power

- -48VDC (-42 ~ -60VDC)
- Power Consumption: 100 Watt

	Network (SFP Optical)	Cascade With A24M
VigorAccess A48M	•	•
VigorAccess A48S		•