

CIII-CHASSIS



**The product doesn't include the slide-in converter modules which are optional devices.

IN-BAND Management 18 Slots Media Converter Chassis Center

Hardware Features

- Support 18 Hot-Swap Convert Module
- Support 2 Hot-Swap Power Modules Include AC100-240V And DC48V
- Support Swappable Management Module
- Support Hot Swap Cooling Fan
- Support 2 Management Interfaces RS232 and Fast Ethernet with Auto MD

System and Module Management Feature

- Comply with IEEE 802.3ah FTTX network management standard
- Chassis Power Module and FAN Monitor
- Local port management function
 - Module Control - Auto/Speed/Duplex
 - Enhanced Control - Flow Control/Rate Limit/ Broadcast Storm
 - Monitor - Model/Media/Link/Speed/Duplex/Activity
 - Enhanced Monitor - Traffic Counter
 - Specification - Fiber Type/Wave Length/Distance
 - Redundant Configuration (By Depend Module Function)
- Remote port management function
 - Module Control - Auto/Speed/Duplex
 - Monitor - Model/Link/Speed/Duplex/Auto/Flow Control/Power
- Full Wire Speed In-Band Diagnostic (Loop back Test)
- One Time System and module upgrade
- Auto Back under FTP/TFTP
- Support SNTP Time Server
- Management Interface support Console/Telnet/SNMP/WEB
- 4 Levels User Account Management
- Support IP Security
- Support Radius Authentication
- SNMP Agent Support MIB II Interface (RFC 1213/1573) / Private MIB (CHASSIS2) / RMON MIB (RFC 1757)
- SNMP Trap Support Warm/Cold Start / Authentication Fail / Power & Fan Fail / Local Module Link Up/Down / Local Power Module down / Remote Power Down / Remote Module TP Link Up/Down

Description

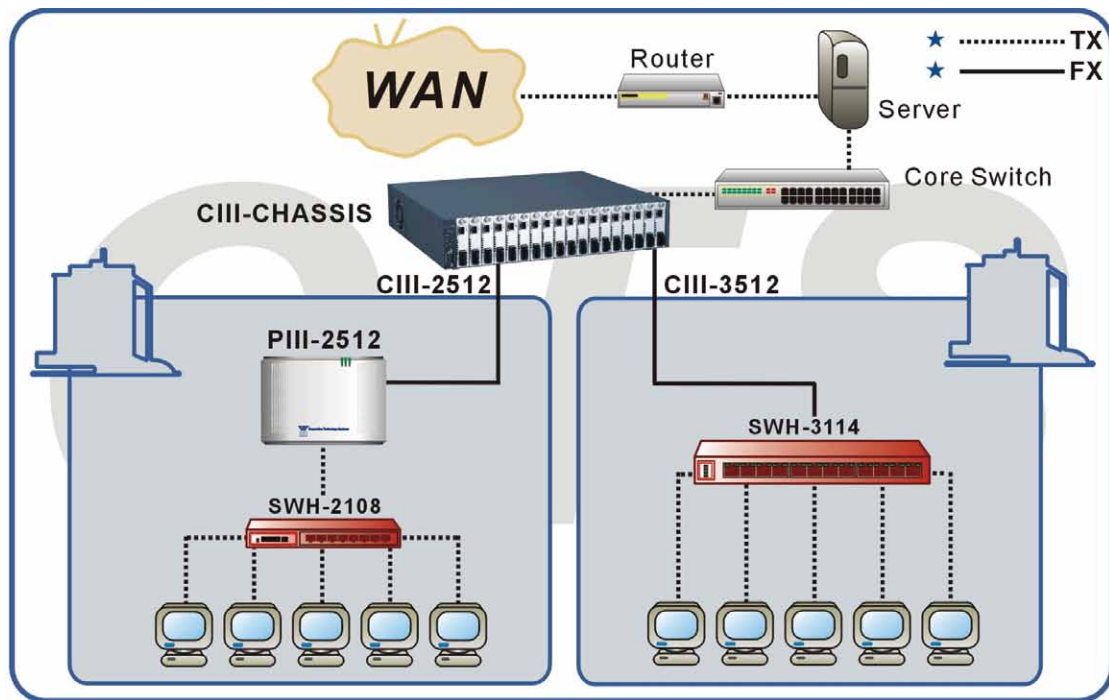
CIII-CHASSIS from Connection Technology Systems is a 18-slots, 19-Inch rack mountable IEEE 802.3ah "In-Band" SNMP base management chassis. This 19" size chassis is typical suit for the wiring centre; all slide-in converters are hot-swap supported.

Compare with CTS Chassis II, the CIII-Chassis continue keep original useful function which like CTS famous propriety "In-Band" SNMP management function which include local management and remote management function, with "Remote Loop Back Test and Diagnostic" you can to easy identify cable and remote device status, and "Remote Power Down" trap function help you immediately get remote device power status, and for others features as "Bandwidth Control" can meet individual user requirements, RMON monitor provides network administrators with comprehensive network fault diagnosis, planning, and performance tuning information.

For new module, the new CIII-Chassis provide very unique function to support "Application QoS" and "Q-in-Q VLAN Tunneling" base module, these modules can bring your FTTX application meet next generation requirement which for IPTV, VoIP and Triple Player market.

The CIII-CHASSIS is fully compliant with IEEE802.3 and 802.3u standards. The installation & operation procedures are simple & straightforward. The standard SNMP management as well as WEB base management make CIII-CHASSIS becomes the best choice of network administrator.

Application Diagram



Specification

Management

Protocol: SNMP, Console, WEB
Interface: DB-9 (DTE) and RJ-45 (10/100BaseTX)

Interface & Port Number

Number of Module Slot:
Eighteen CIII-XXXX series slot
Number of Power Slot:
Two CIII-CHASSIS power slot for AC or DC

LED

Power A, Power B, LAN, COM, M/S

Power

CIII-CHASSIS AC Power: 100~240V 50/60Hz 4.0~2.0A
CIII-CHASSIS DC Power: 48VDC 40A Max
Power Consumption
Without module: 7W
Full loaded (18 modules): 120W Max

Typical Operation & Storage Temperature

Operation: 0 ~ 50°C
Storage: -20 ~ 60°C
Humidity: 5% ~ 90% non-condensing

Dimension & Weight

Chassis:
440x 395x88mm (WxDxH)
AC/DC Power:
180x160x50 mm (WxDxH)

CIII-XXXX Module:

119x86x25mm (WxDxH)
Net Weight
CIII-CHASSIS: 8KG
CIII-CHASSIS AC/DC Power: 1KG
Shipping Weight
CIII-CHASSIS: 10KG
CIII-CHASSIS AC/DC Power: 1.5KG

Emission/Safety

FCC Class A, CE

* For further reports, please contact us for update.

Supporting Module:

10/100Mbps:

CIII-2512BTFX / W2X : 10/100BASE-TX TO 100BASE-FX CONVERTER MODULE

10/100/1000Mbps:

CIII-3512BTFX / W2X : 10/100/1000BASE-TX TO 1000BASE-SX/LX CONVERTER MODULE

Order Information

MODEL	PORTS OF SLOTS		SUPPORT POWER SOURCE	REMARK
	Converter Module	Power Module		
CIII-CHASSIS (WITH S/W, WITHOUT POWER)	18	2	AC/DC	-
CIII-CHASSIS-AC POWER	18	2	AC	-
CIII-CHASSIS-DC POWER	18	2	DC	-