

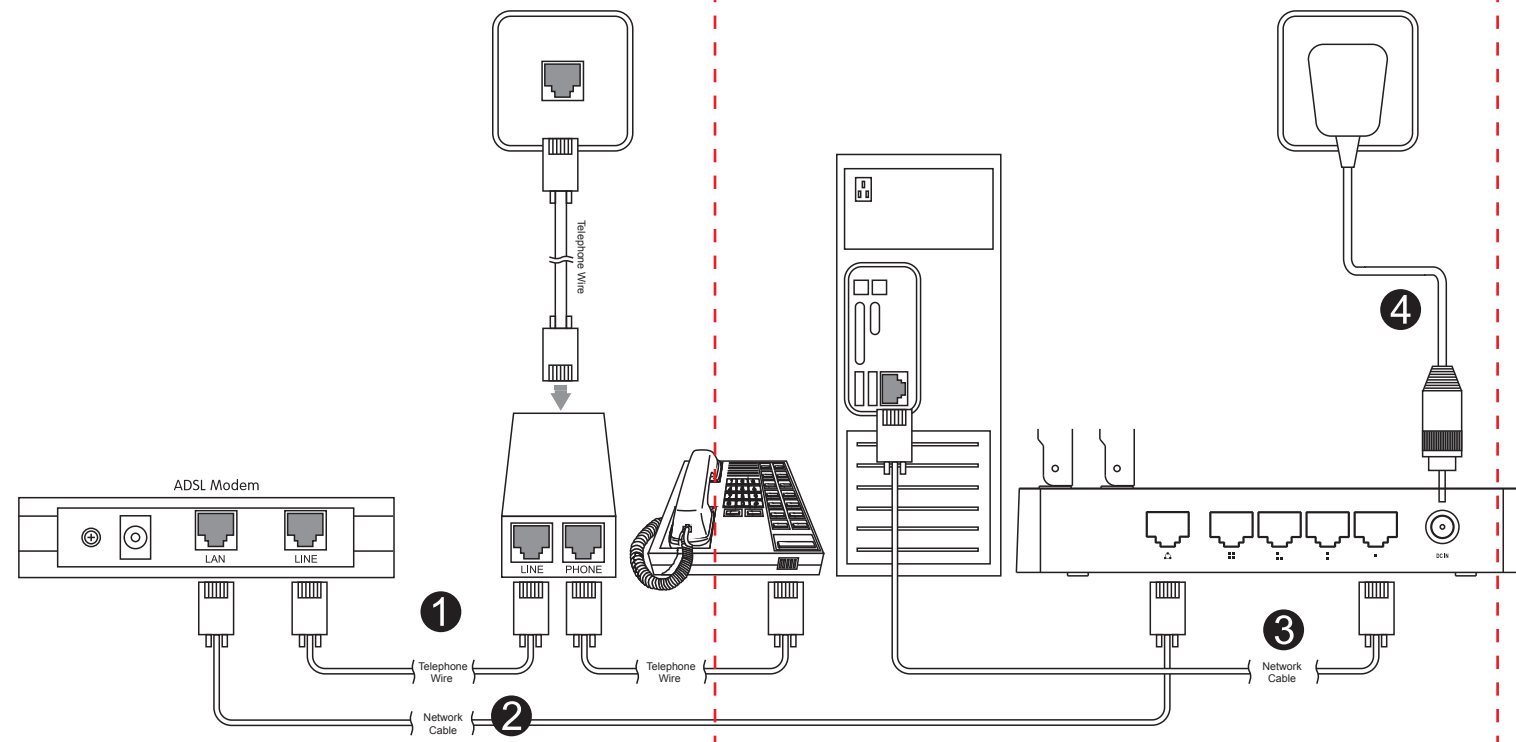
Quick Installation Guide

Wireless-N Dual Band Router

Copyrights 2013 by TOTOLINK All rights reserved. Website: <http://www.totolink.net>
Information in this document is subject to change without prior notice.

1 Hardware Installation

If you access Internet by ADSL, please comply with step 1, 2, 3 and 4 in below diagram in correct order; if you access Internet by residential broadband, please comply with step 2, 3 and 4 to connect the WAN port of your router with the residential broadband directly.



After connected, please check whether the indicator lights are normal.

Name	Description
Power	This indicator lights blue while the router receiving power, otherwise it is off.
CPU	This indicator keeps blinking blue after the router powered on.
2.4G	This indicator lights blue when the router's 2.4G wireless enabled.
5G	This indicator lights blue when the router's 5G wireless enabled.
WAN	When the WAN port is connected successfully the indicator lights blue. While transmitting or receiving data through the WAN port the indicator blinks blue.
1/2/3/4 LAN	When one of the LAN ports has a successful connection, the corresponding indicator lights blue. While transmitting or receiving data through the LAN port the indicator blinks blue.

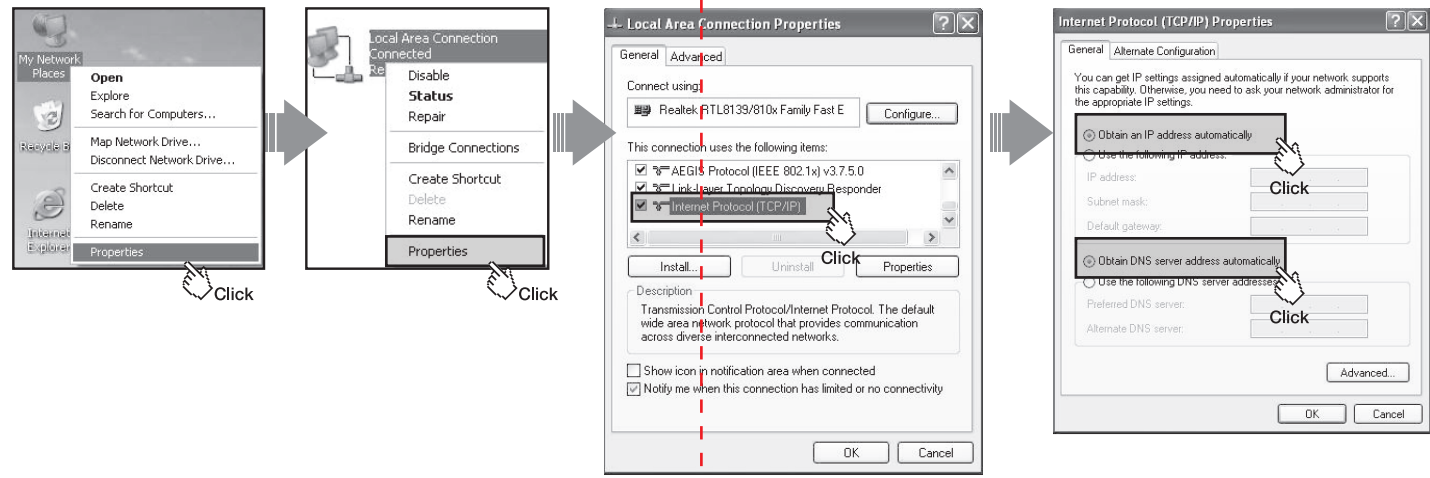
NOTE:

1. Please disconnect the power adapter and all cables during thunderstorm weather.
2. Keep away from heat source and keep well ventilated;
3. Please pay attention to the waterproofing and moisture-proof when storing, transporting and running;
4. The power supply must reach the rated current and power;
5. Put the router in flat places.

2 Set Up PC

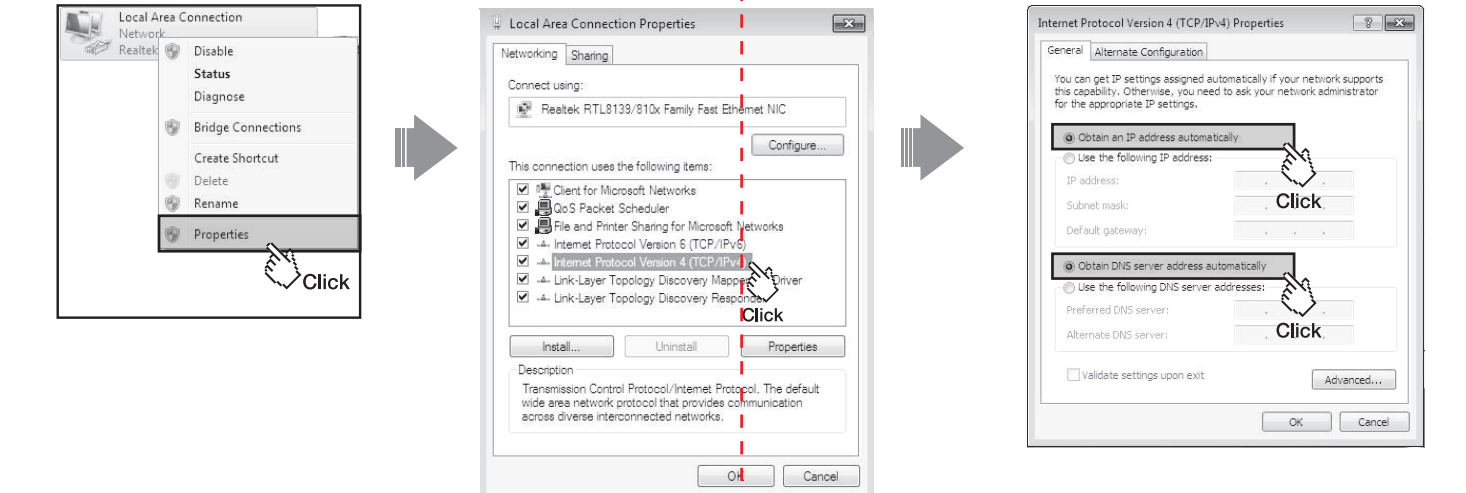
Windows 2000/XP For Windows 2000 or Windows XP Operating System, please comply with following steps to set up.

1. Right-click "My Network Places", click "Properties"
2. Right-click "Local Area Connection", click "Properties"
3. Double-click "Internet Protocol (TCP/IP)"
4. Choose "Obtain an IP address automatically" and "Obtain DNS server address automatically", click "OK", go back to previous interface and click "OK"



Windows Vista/7 For Windows Vista or Windows 7 Operating System, please comply with following steps to set up.

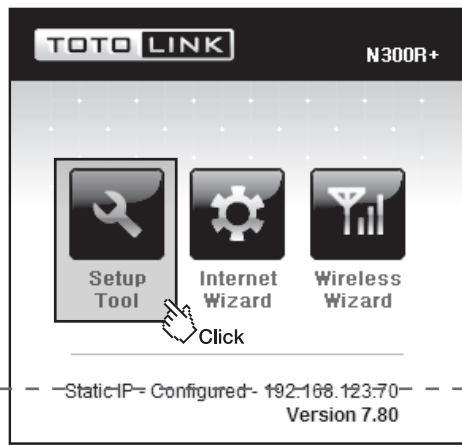
1. Click "Start—Control Panel—Network and Internet—Network Connection", right-click "Local Area Connection", and choose "Properties".
2. Double-click "Internet Protocol Version 4 (TCP/IPv4)".
3. Choose "Obtain an IP address automatically" and "Obtain DNS server address automatically", click "OK", go back to previous interface and click "OK"



3 Set Up Router

Please set up the router following below steps.

1. Run the Web browser. Click
2. Type 192.168.1.1 in the Web browser address bar, then press Enter.
3. First, click Setup Tool to log in the web interface of this router.

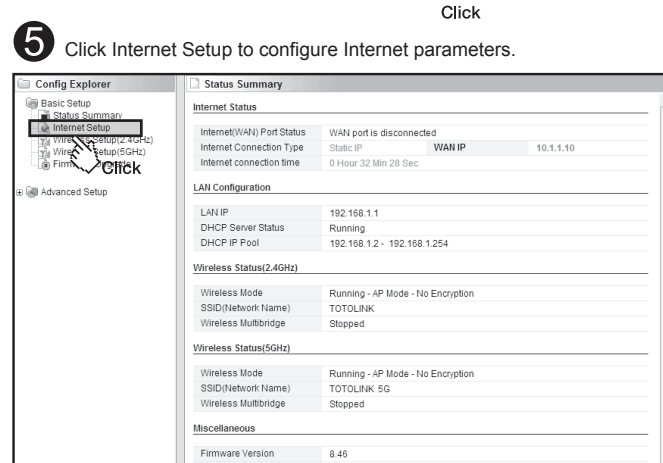


4. Input User Name and Password, then click "Log In". (the default User Name and Password are "admin".)

User name:

Password:

Remember my password



Internet Access Mode	Parameters that provided by ISP (Service Provider)
A DHCP	ISP's do not provide any parameters, you can access Internet without router, no need set up the PC.
B PPPoE	User name & Password.
C Static IP	Fixed IP address, Subnet mask, Default gateway and DNS server.

Internet Setup	A	B	C
WAN IP	10	1	1
Subnet Mask	255	255	255
Default Gateway	10	1	1
Primary DNS	12	12	13
Secondary DNS			14
MTU	1500		
MAC Address Clone	Search MAC address		

2.4GHz Wireless Setup

Operation: Start Stop

SSID: TOTOLINK

Mode: B/G/N

Region: Europe

Channel: 11 (2.452 GHz/Upper) Channel Search

Operation mode: SSB Broadcast ON OFF

WMM: ON OFF

Authentication: Automatic

Encryption: Disable WEP64 WEP128 TKIP AES TKIP/AES

5GHz Wireless Setup

Operation: Start Stop

SSID: TOTOLINK 5G

Mode: 5GHz-11N

Region: Europe

Channel: 149 (5.745 GHz/Lower) Channel Search

Operation mode: SSB Broadcast ON OFF

WMM: ON OFF

Authentication: Automatic

Encryption: Disable WEP64 WEP128 TKIP AES TKIP/AES

NOTE:

After you set the Encryption Key, please remember your SSID and the Encryption Key to connect with your wireless LAN.

Press and hold RST/WPS button for less than 5 seconds, the router will enable WPS function. Press and hold RST/WPS button for more than 5 seconds, the router will enable RST function.

4 Wireless Network Connection

1. Right-click "My Network Places", click "Properties"
2. Right-click "Wireless Network Connection", and click "View Available Wireless Networks"
3. Confirm the wireless network SSID name, choose one that you would like to connect, then click "Connect"
4. Input the encryption key and click "Connect"
5. Have connected wireless network, you can access internet through wireless mode.

