

## Quick Start Guide of Smart Monitor

V1.0

### Introduction

SmartMonitor, a type of network security verification tool integrating into Vigor series routers, gathers, processes and analyzes raw data from the Internet, and transforms the data to a readable format in order to generate several types of reports for the management team.

As we know, enterprise management teams often encounter the following circumstances which affect work efficiency:

1. Using Instant Messenger (IM) at work
2. Abusing broadband connection by over-downloading
3. Disclosing confidential information via IM tools, FTP, Mail, etc.

SmartMonitor is a customized tool for Enterprises to improve their work efficiency. It is to solve the problem of network happened to the enterprises. Through the verification of network information, SmartMonitor can assist administrators of enterprises to solve various problems caused by network application. No matter log of web browsing, log of e-mail, log of instant message, or files downloaded, Smart Monitor can categorize them into different groups that will be convenient for administrators for inspecting..

SmartMonitor brings “Management Automation” concept to the enterprises. The traditional management is passive administration that employees are often warned by administrators before discontinuing his/her actions. In such cases, emotional reaction could appear on employees which may lead to management problems. By providing a function of top 10 list of every category, SmartMonitor allows employees to check Top10 ranking for different network applications such as Top 10 IM, Top 10 downloading, and etc. When the employees find their names on the list, they would restrict their actions voluntarily. Such thing will form concept of “self-discipline management” by themselves.

Top10 also will rank all of the service types to assist the network administrators to find out the network usage trend of users and lead the designing & planning of network to have better network management and practice the greatest work efficiency of enterprises. You may find which website is most frequently to be accessed, if it's not essential for work, administrator can set url filter in Vigor router to block it.

In addition, SmartMonitor not only provides reports, but also generates off-line reports for each individual for inspecting.

Except enterprises, SmartMonitor can also be applied in a home environment. The development of Internet not only brings the convenience in data acquiring, but also it takes more unhealthy information to threaten the growth of teenagers. By deployment of SmartMonitor, parents can now

find and configure to block unhealthy website in Vigor routers in order to provide a healthier and safer Internet environment to their children.

## Recommended System Requirement:

CPU: P4 and above

Memory: 512M and above

Hard Disk: 80G and above for destination logic partition

OS: Windows 2000, XP

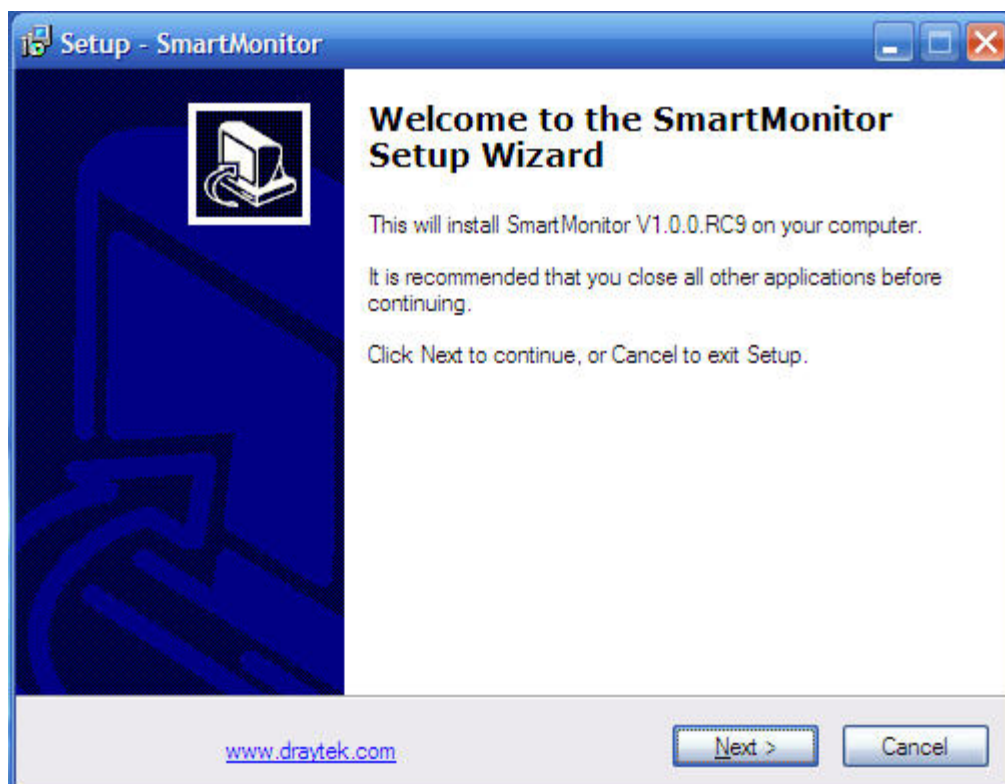
## Part I. Install Guide

Before you start to install Smart Monitor V1.0.0, you should check the following things:

1. If you are running Skype, please close it, which will occupy port 80 and cause apache setup application fail.
2. If you had installed apache web server, please uninstall it first, and delete apache folders manually. Apache folder is “C:\Program Files\Apache Group” by default.

Install Steps:

1. Double-click Smart Monitor\_Installv100.exe to install Smart Monitor to your PC.
2. Click Next to continue.

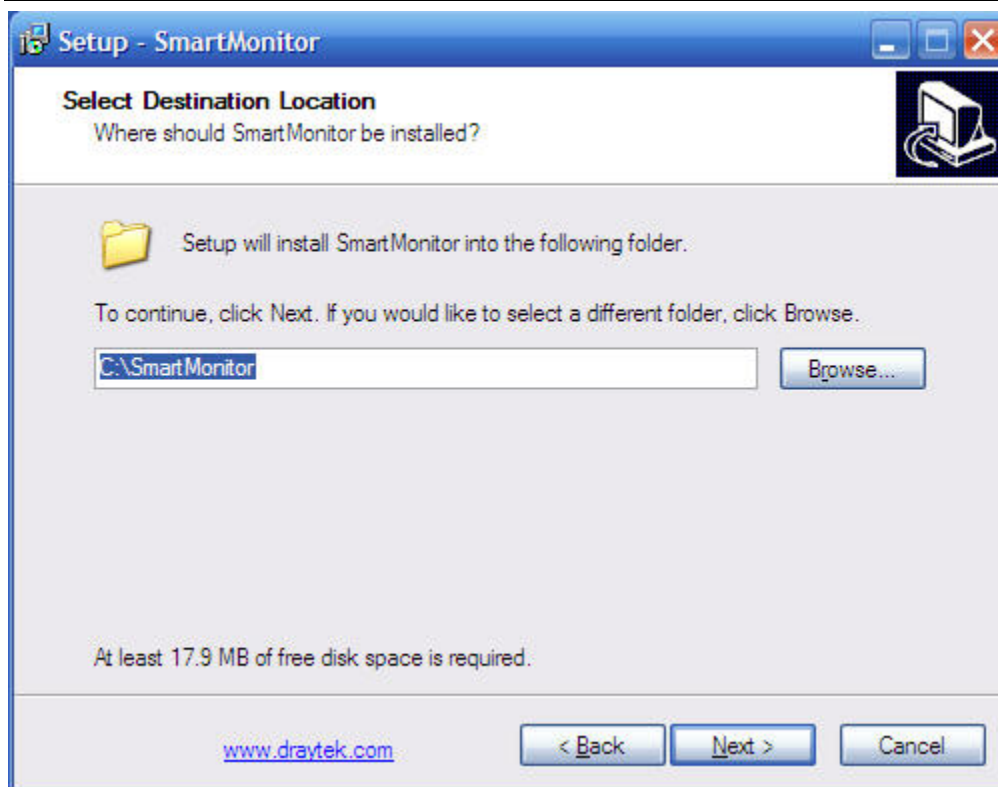


3. Tick 'I accept the agreement' then click 'Next'.

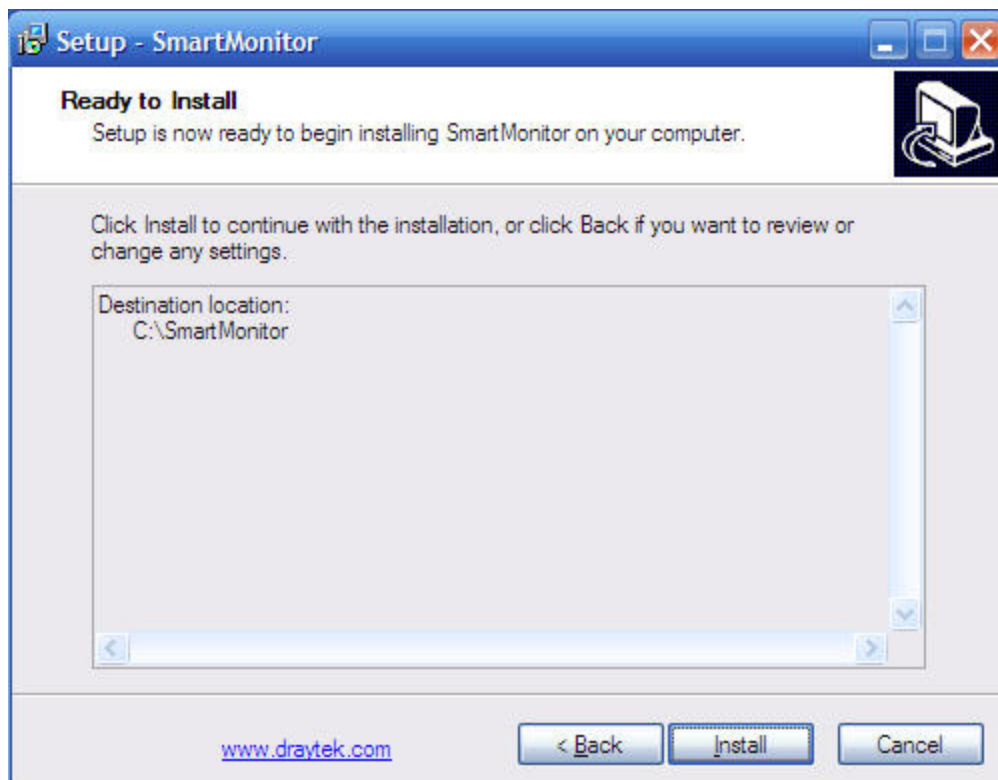


4. Select destination folder you want to install Smart Monitor to. Please NOTICE that network record may use large quantity of disk space; you'd better install it to a disk partition with large free disk capacity.

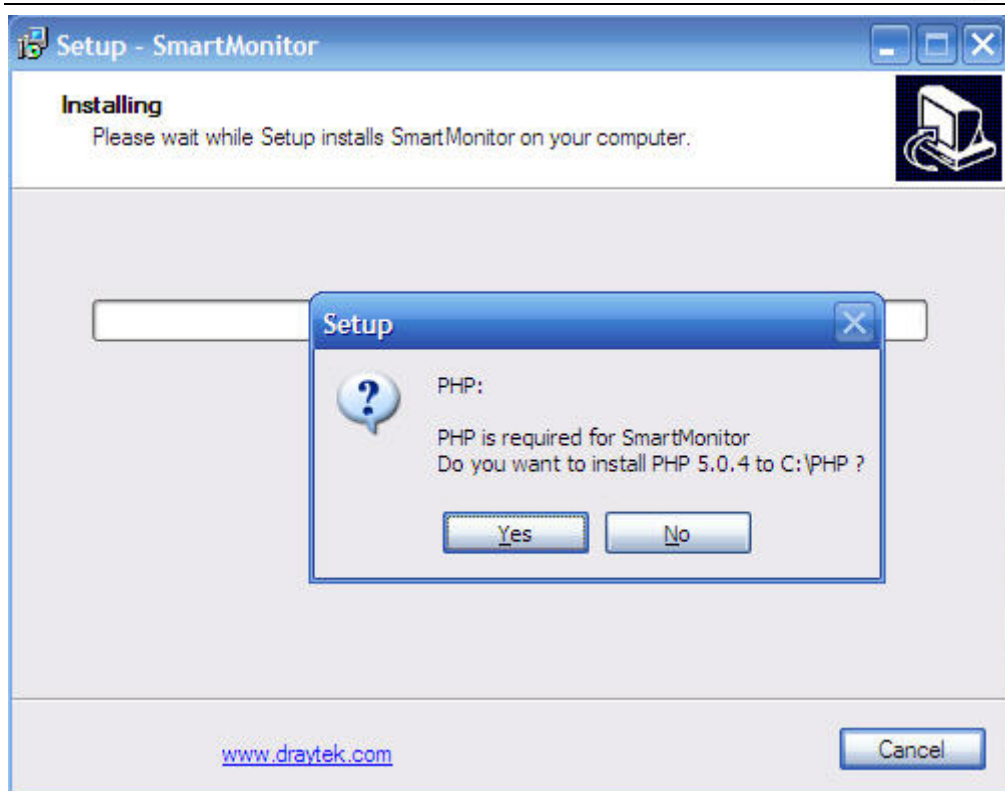
Finish destination folder setting, then click 'Next'.



5. Then, click 'Install' to continue...



6. Smart Monitor WUI is working on PHP, so just click 'yes' to install PHP5.

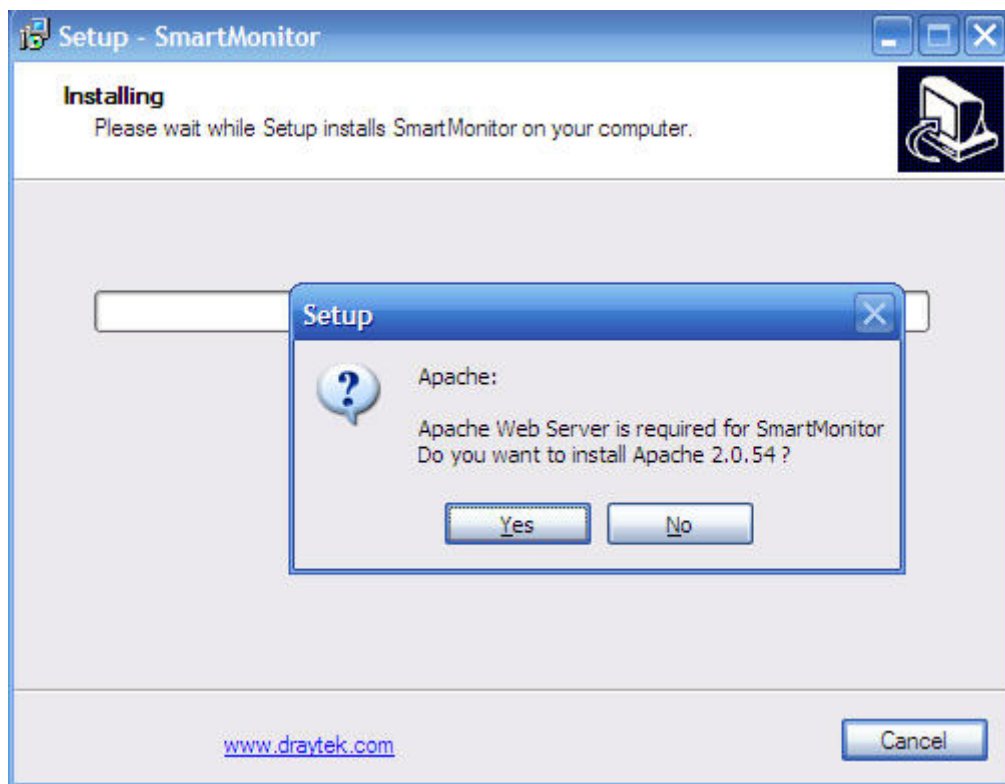


7. Apache Web server is also necessary, so click 'yes' to process to next step.

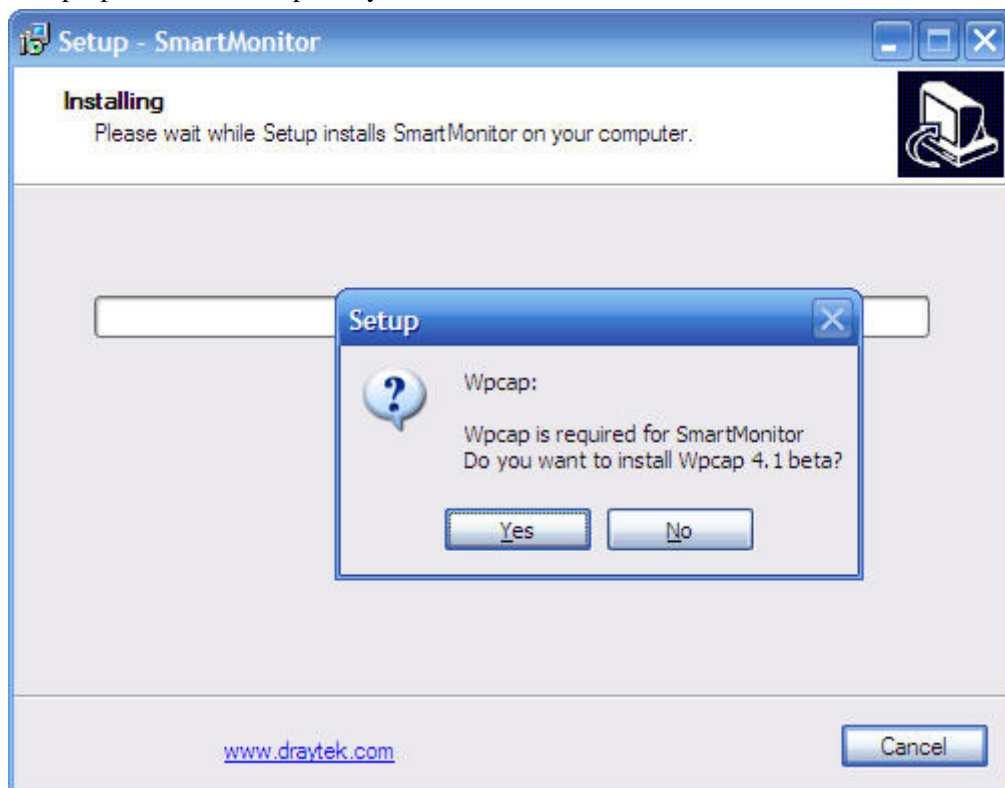
Please note, apache will open tcp port 80 by default, if other application use tcp 80 beforehand, apache may fail to start.

Microsoft IIS may use tcp 80 for web service, and skype login may also use tcp port 80, so please close these application and services before you install Smart Monitor.

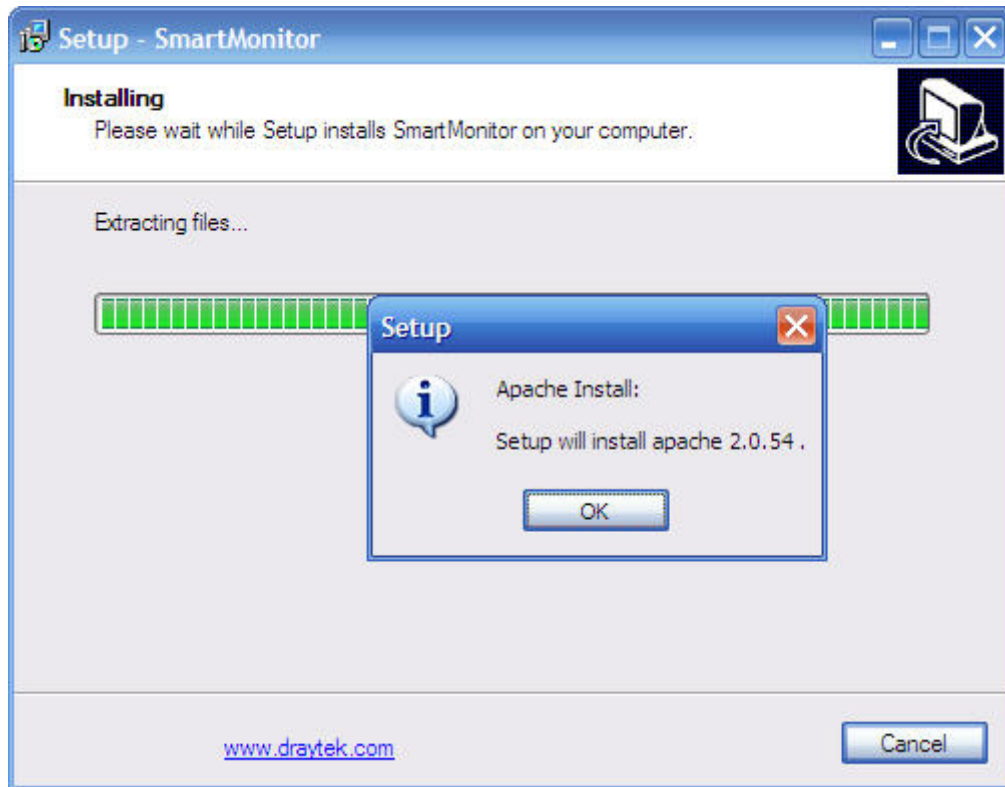
Windows command 'netstat -an' is useful to check if tcp 80 port is open.

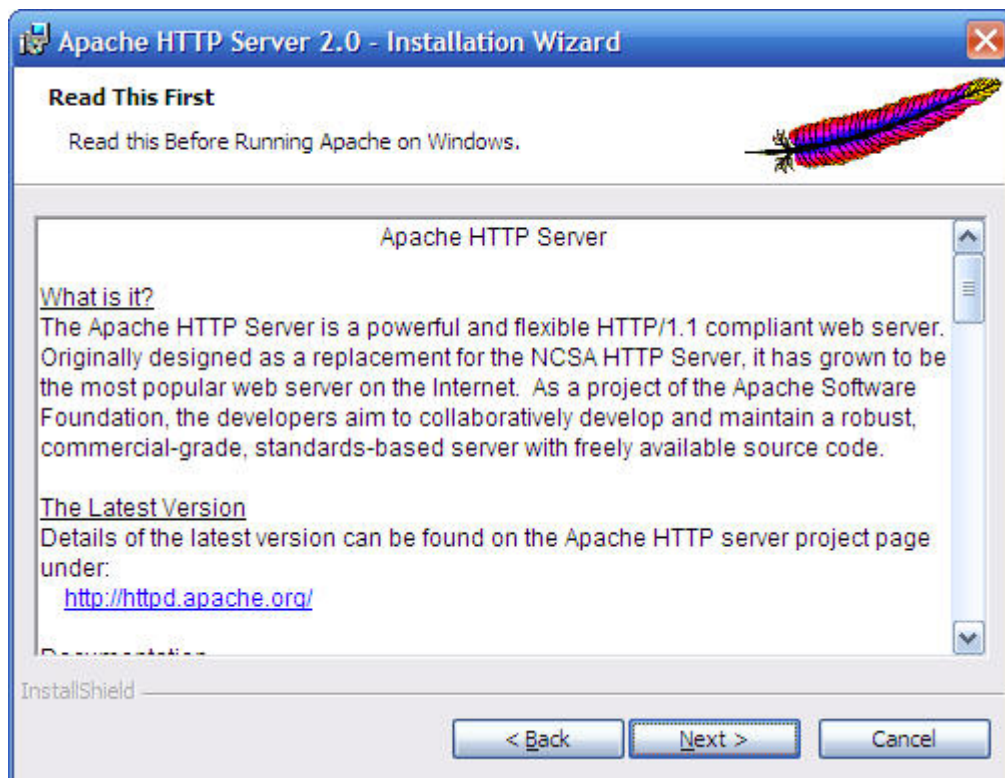
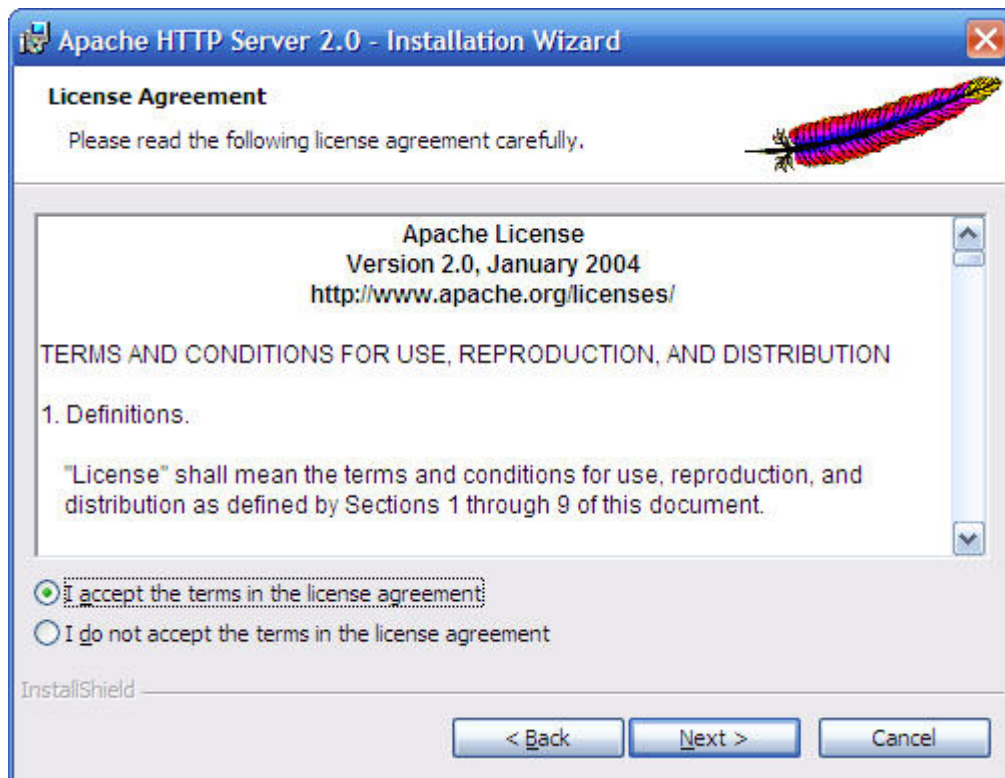


8. Wpcap is also needed, press 'yes' to continue.



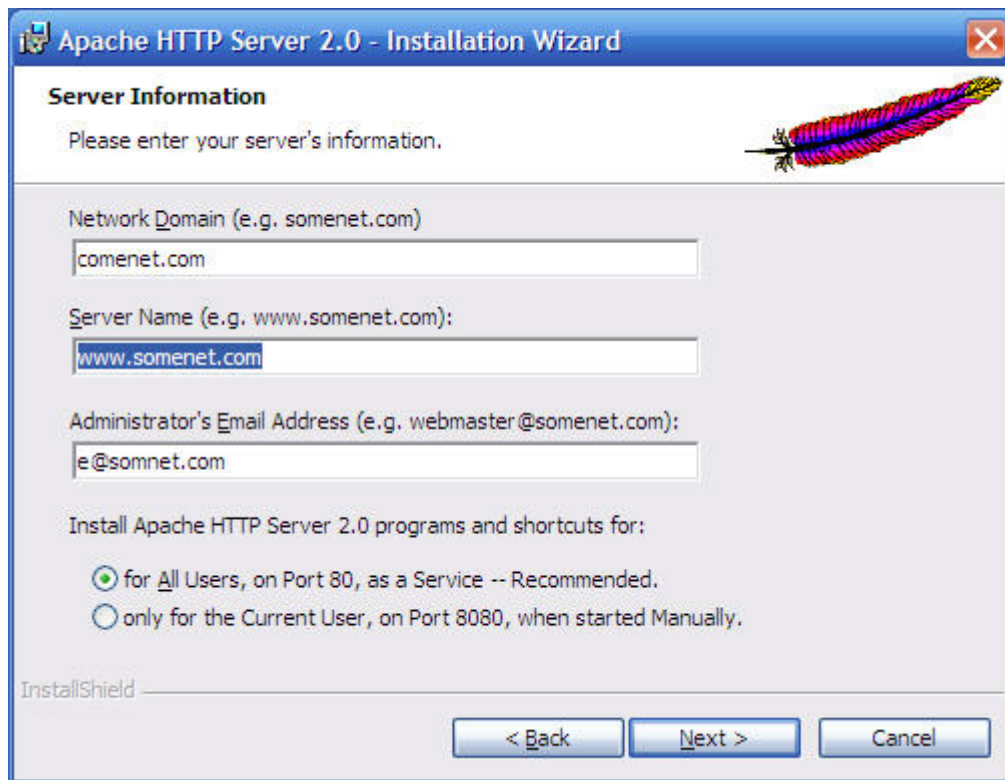
9. Apache install is starting now, click 'ok'. Then 'next', 'next', 'next'...



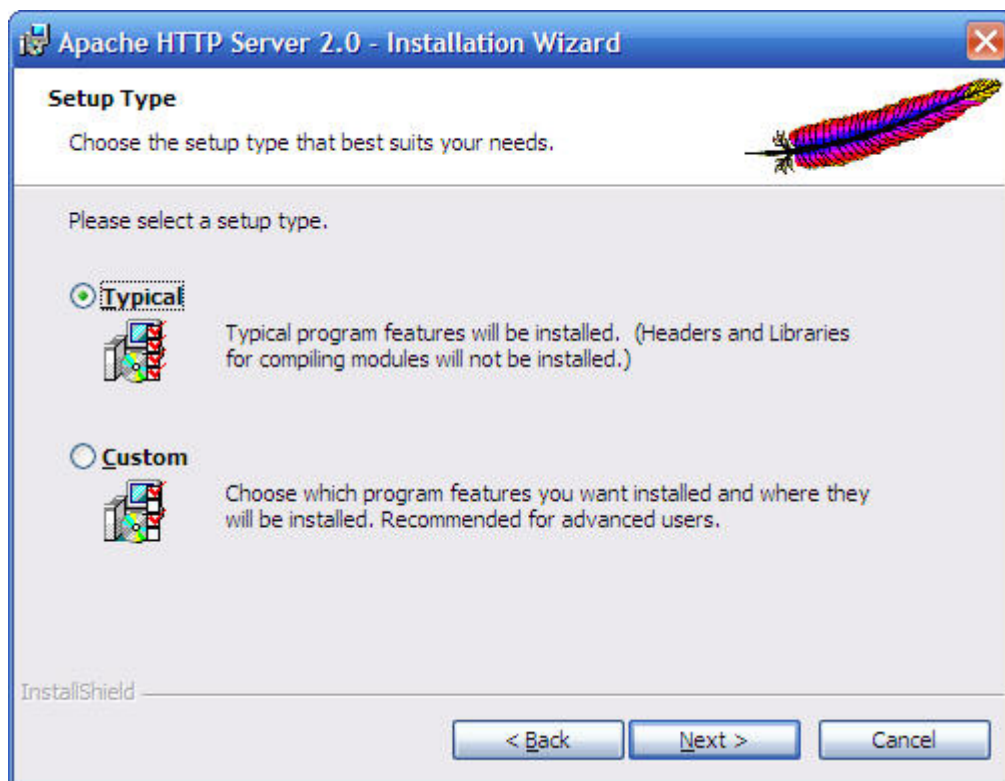


10. Fill in the blanks, then click 'next'.

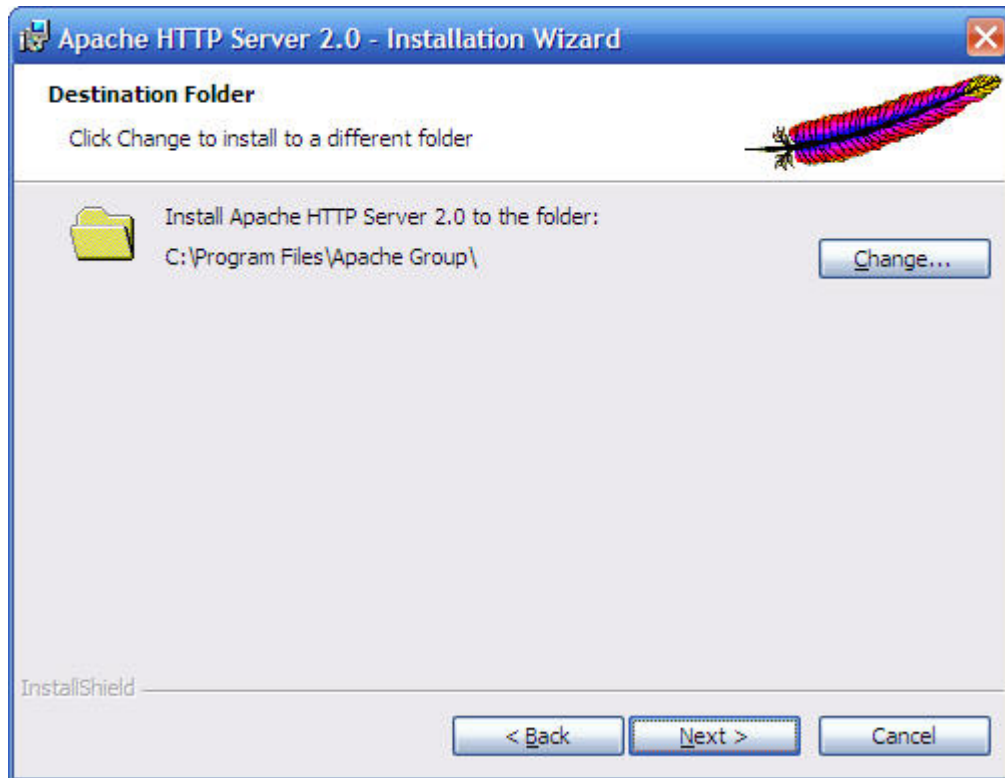




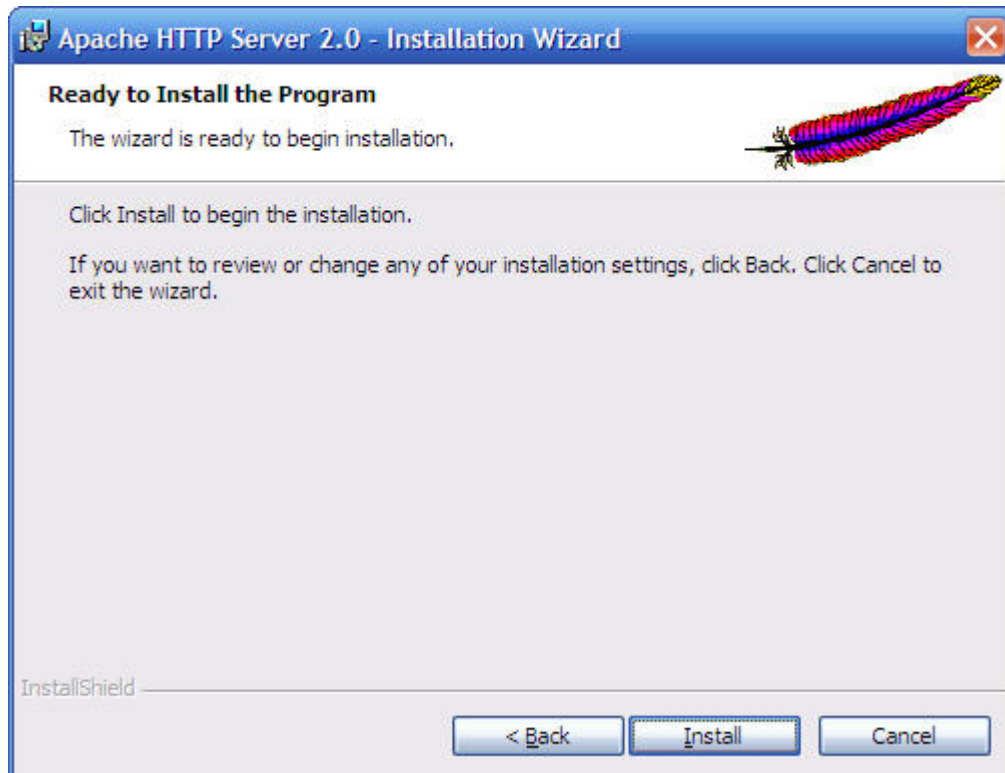
11. For convenience, typical setting is enough, just click 'next'.

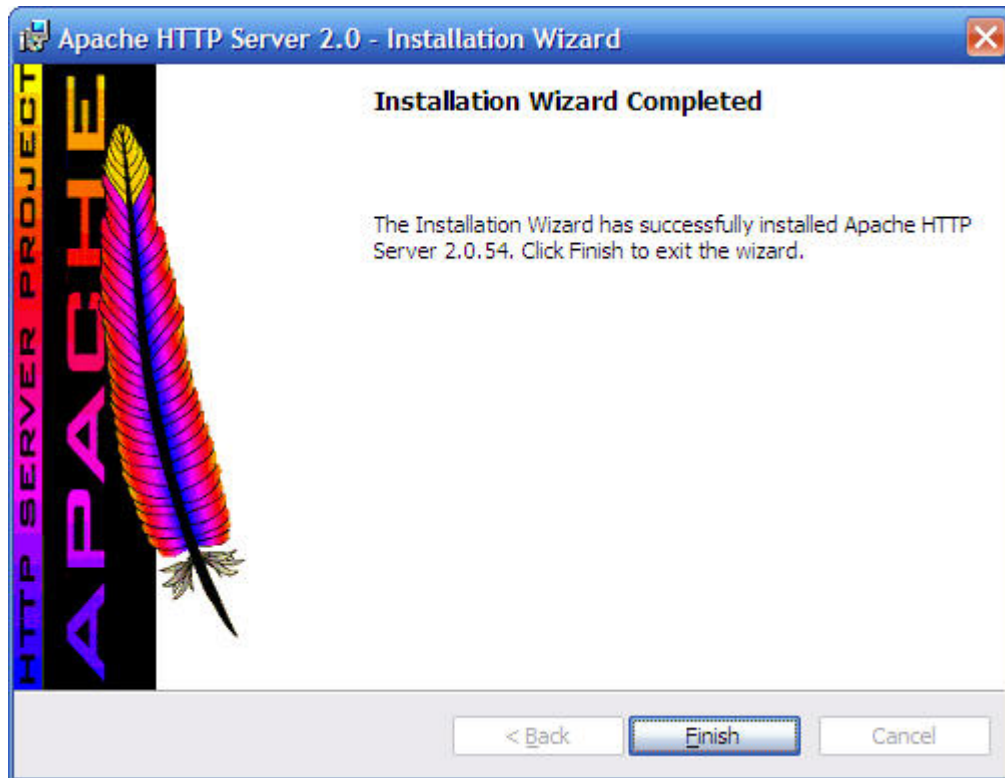


12. Destination folder for Apache, choose and click 'next'

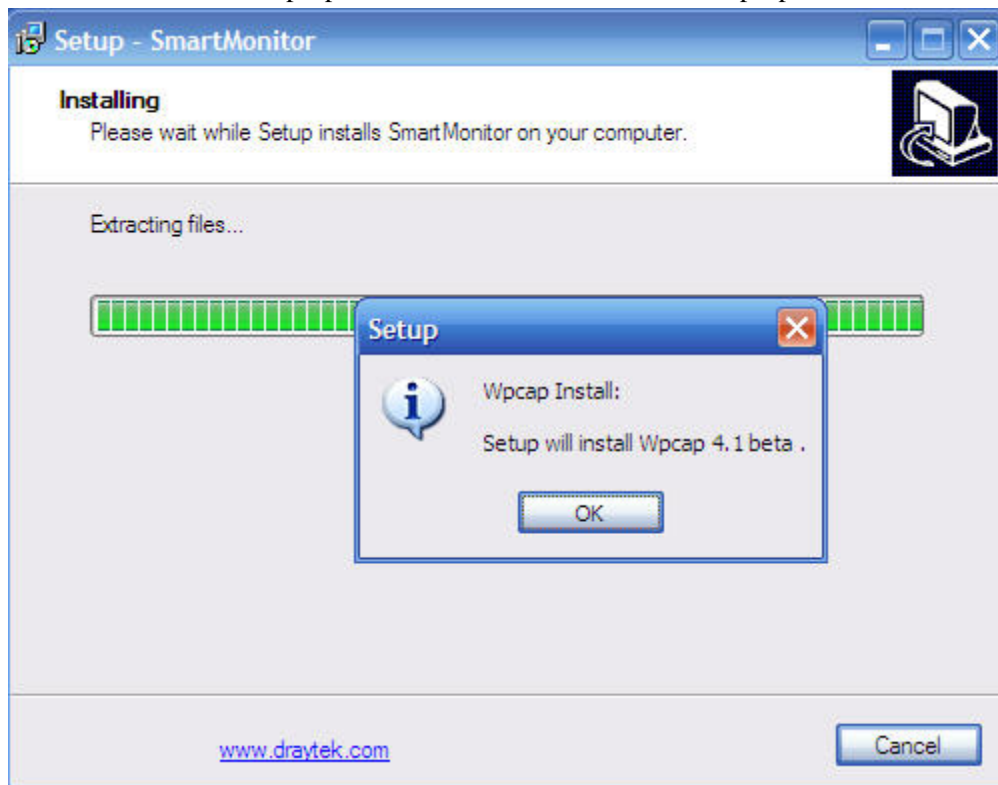


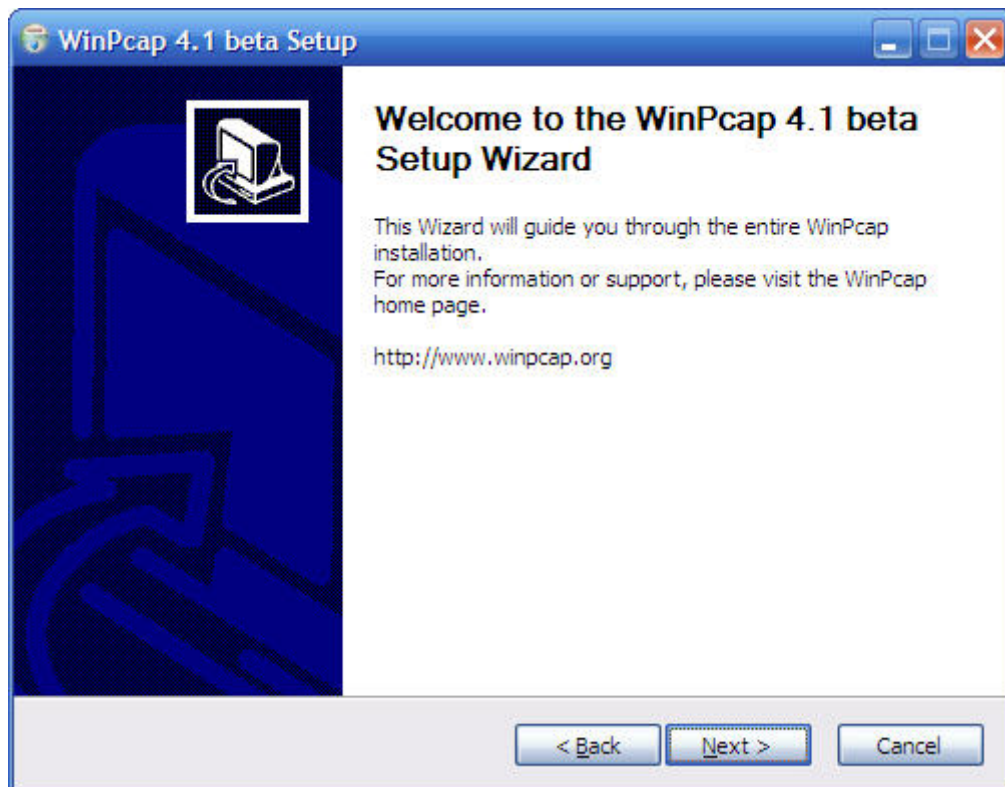
13. Click 'Install' to start file copying process of Apache. Then Apache install will finish.





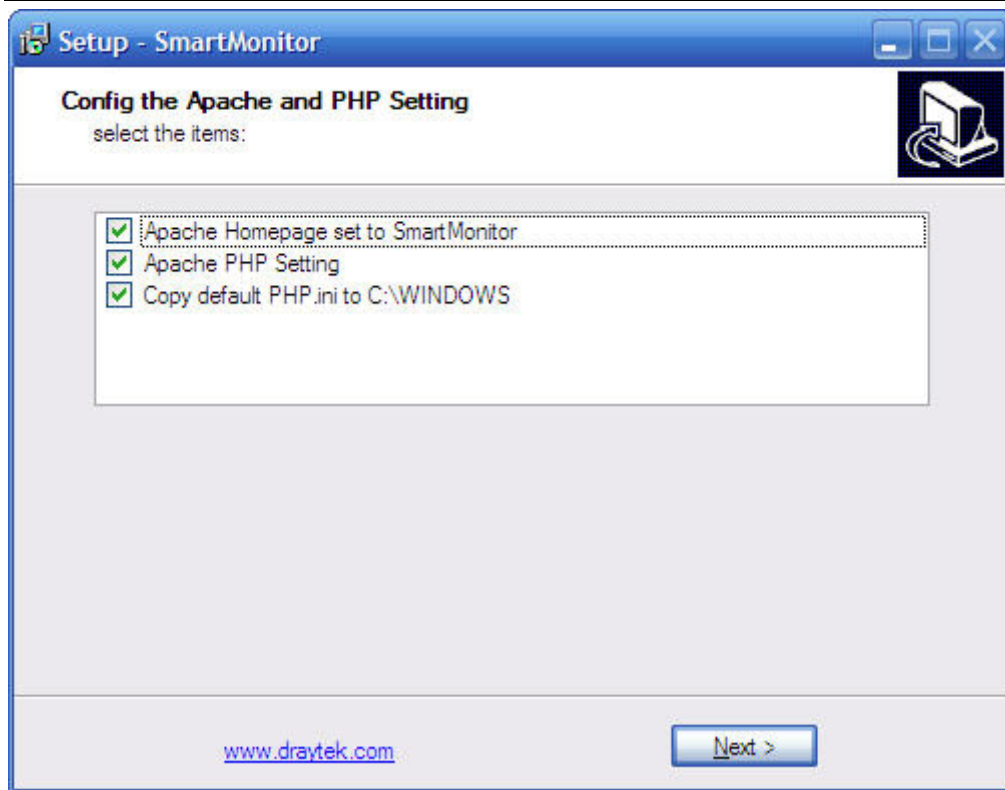
14. Click 'OK' to start wpcap install. After several 'next' click, wpcap will be installed.



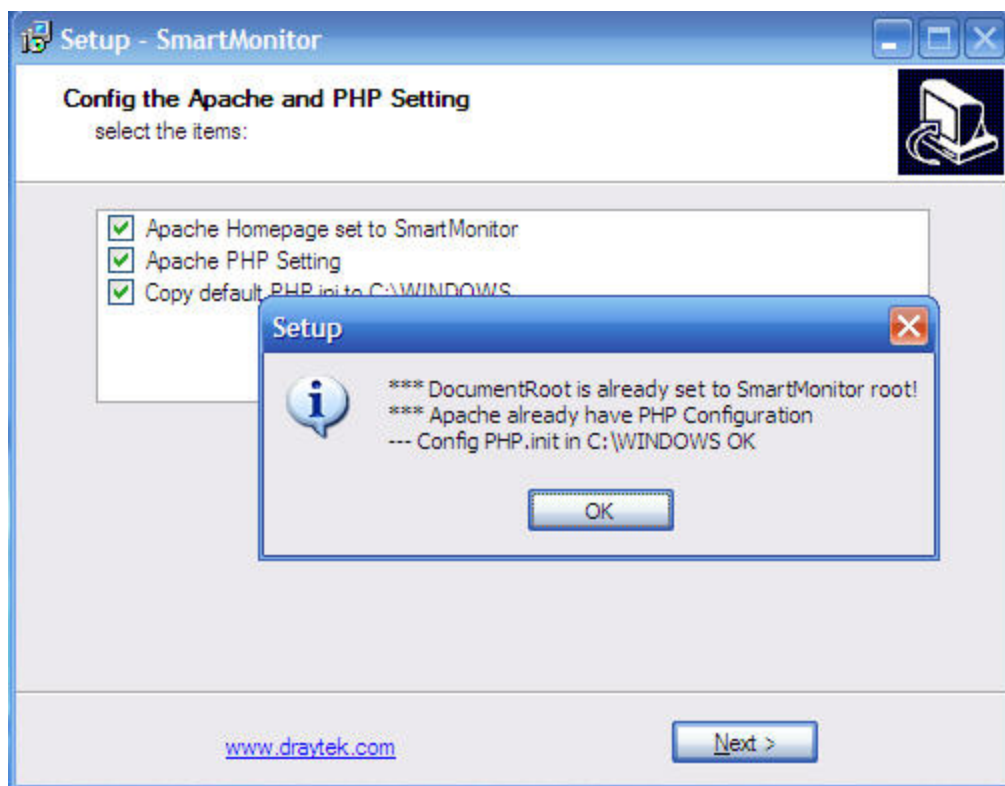




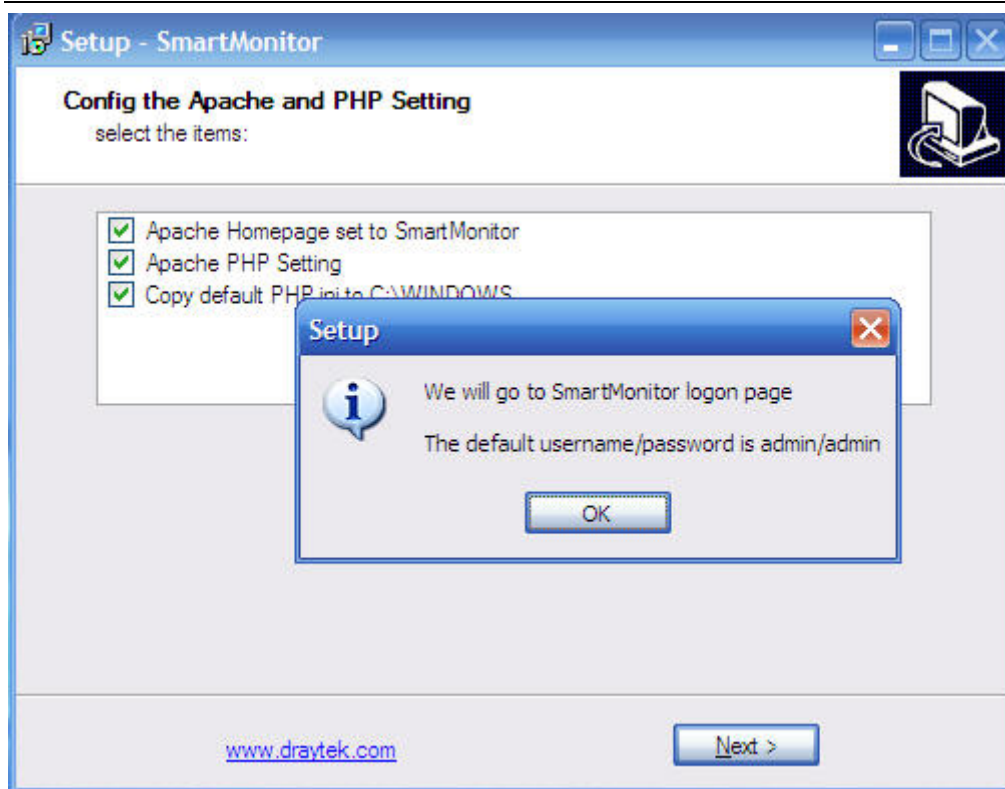
15. We has packed default settings for Apache, PHP, Click 'Next' to enable the default settings.



16. Read the notice and Click 'OK' to confirm the settings.



17. Click 'OK' to proceed to Smart Monitor WUI.

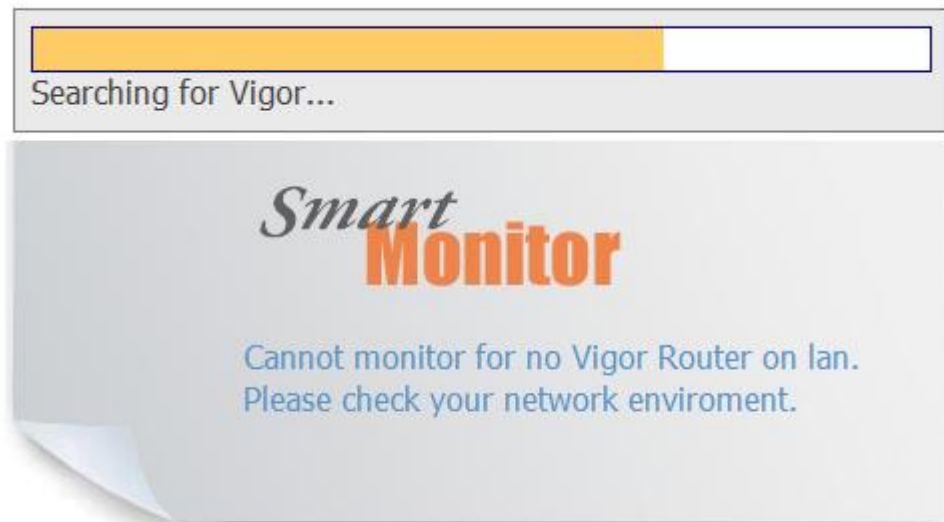


18. The following web page is Smart Monitor Login interface.

Smart Monitor must authenticate with Vigor routers first, before authentication finish, Smart Monitor will not start.

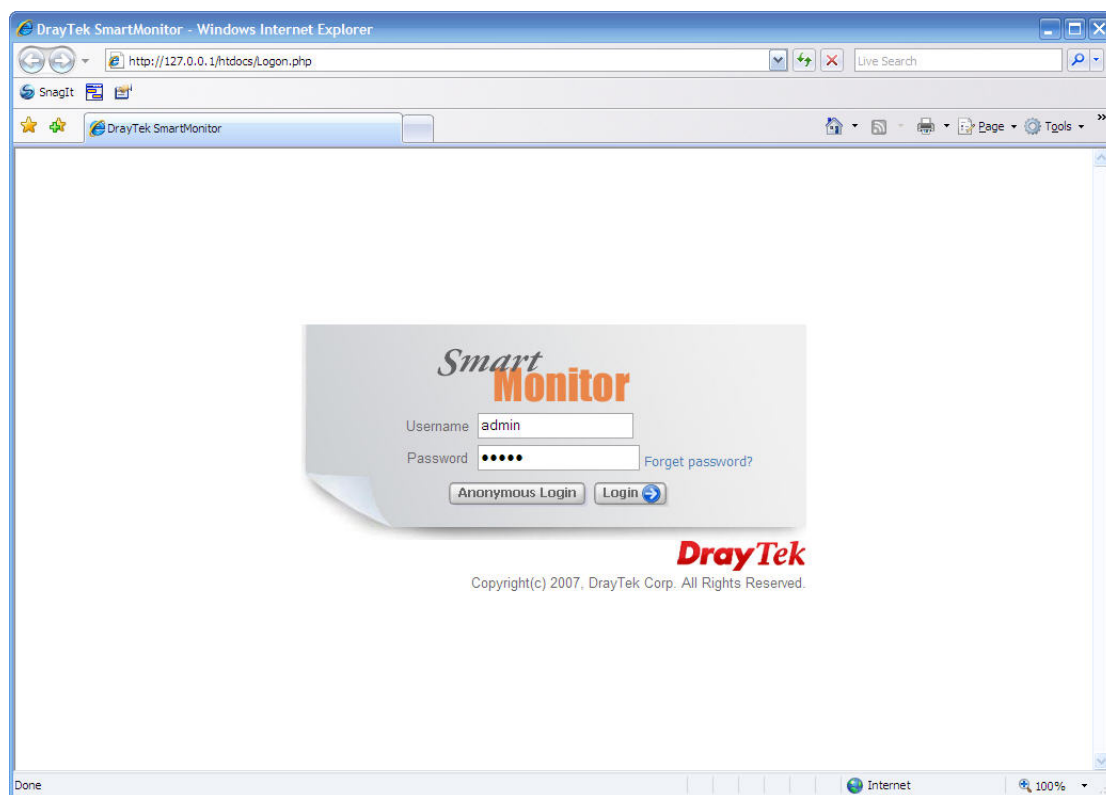
Note:

- 1). Please connect Smart Monitor server to Vigor monitor/mirror port before you start to use it, otherwise Smart Monitor will fail to find Vigor routers and process authentication.
- 2). Refer to Part III for connection scenario.



**DrayTek**  
Copyright(c) 2007, DrayTek Corp. All Rights Reserved.

19. Authentication finish, then login web page will be shown.  
Please note, default username/password is 'admin'



20. In the Smart Monitor PC, admin can use `http://localhost/` to access Web UI, while in any other



PC in the LAN, People can use <http://IP> to access the Smart Monitor Web UI.

For example, if the IP of Smart Monitor server is 192.168.1.10, any PC in 192.168.1.0 subnet can use <http://192.168.1.10> to access WUI of Smart Monitor.

## Part II. Quick Guide to Smart Monitor.

In this section, we'll offer guide for several necessary settings.

1. The following page is main page of Smart Monitor. Move mouse over the top menu, sub menu will be shown.

You can also click hyper-link in the main page to get quick access to the module you are interested.

Smart Monitor v1.0.0.8

Manual Refresh

Protocol	Total to date
FTP	1.44 MB
HTTP	1.37 GB
ICQ	0.00 MB
MSN	11.06 MB
P2P	0.44 MB
POP3	357.84 MB
SMTP	14.15 MB
TELNET	1.37 MB
WEBSMTP	0 MB
YMSG	0.06 MB

No.	IP Address	User Name	Group/Department	Total to date
1	172.17.1.40			395.05 MB
2	172.17.1.77			185.32 MB
3	172.17.1.25			173.17 MB
4	172.17.1.20			162.49 MB
5	172.17.1.41			125.96 MB
6	172.17.1.39			116.11 MB
7	172.17.1.42			93.70 MB
8	172.17.1.71			68.58 MB
9	172.17.1.74			57.78 MB
10	172.17.1.68			52.59 MB

**Quick Start**

- Create your AdminAccount
- Adjust system Setting
- Create Group/Department to manager users
- View records and traffic of each service in **Service Analysis**
- View records and traffic of each user in **User Analysis**
- View statistics and analysis information in **Report**

**Service Analysis**

- FTP: 上传下载情况, 文件备份
- MAIL: 收发邮件情况, 邮件信息内容, 附件下载
- HTTP: 网站浏览情况, 回溯
- IM: 使用MSN/ICQ/Yahoo
- TELNET
- P2P

**Report**

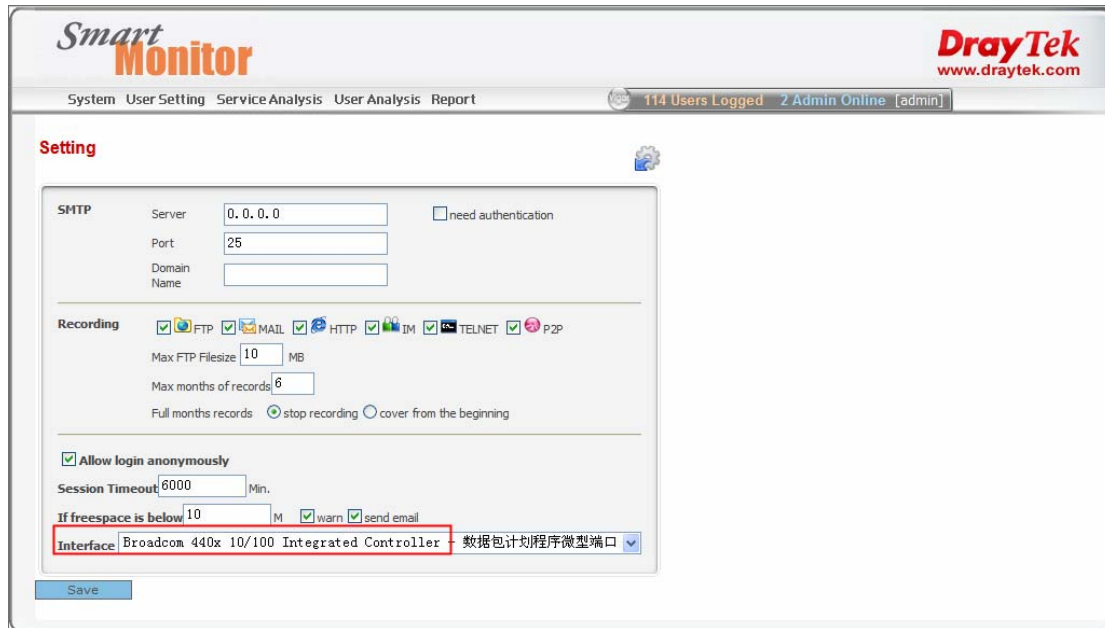
- 每日/每周流量图
- 每日/每周通讯量报表
- 查看网络使用报表, 以检查网络应用的资源占用情况, 以便对磁盘空间和防火墙设置进行统筹调整
- Harddisk space utilization

2. System→Setting, We should make some settings in this page first.

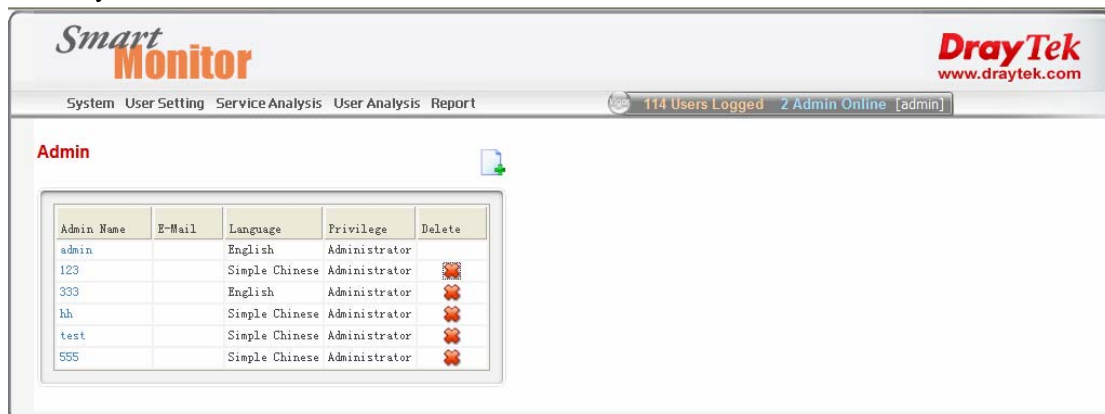
If you have only one Ethernet-card installed in your PC, Smart Monitor will start capture and analyze automatically. However, some PC have multiple Ethernet card, so you should choose the Ethernet card connected to monitor port first.

There are several other settings in this page, which are easy to understand.

The one I want to comment is 'Allow login anonymously', which means people can view Top10 page without login password, which is special mechanism for self-management.

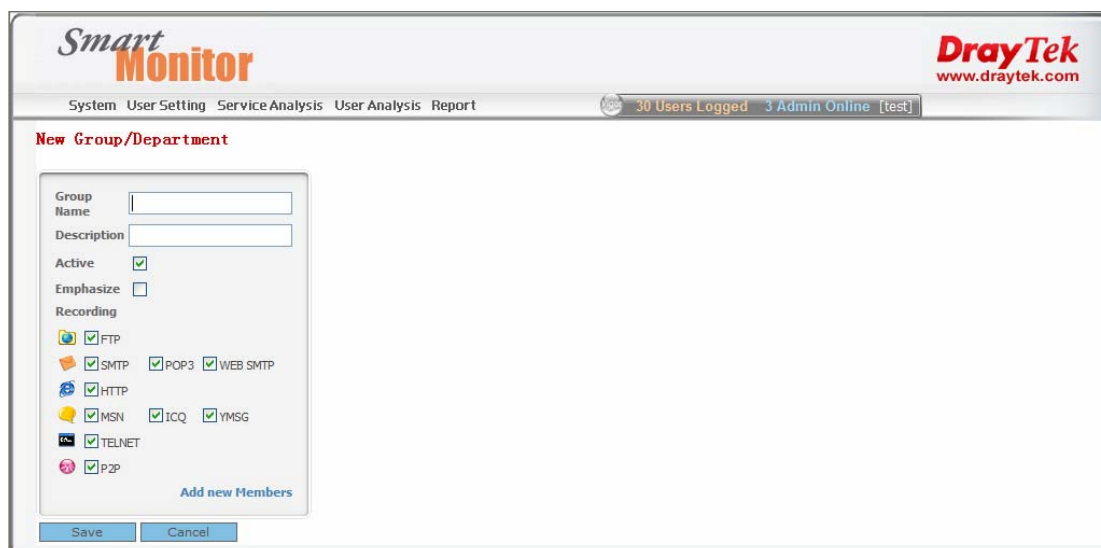


3. SYSTEM→Admin is also important; you can set more administrator username/password for different privilege and language. We only have 'English' and 'Simplified Chinese' support currently.



4. User Setting→ Group/Department

We can group user and specify different monitor content for each group. It's very helpful for network administrator to monitor your network.



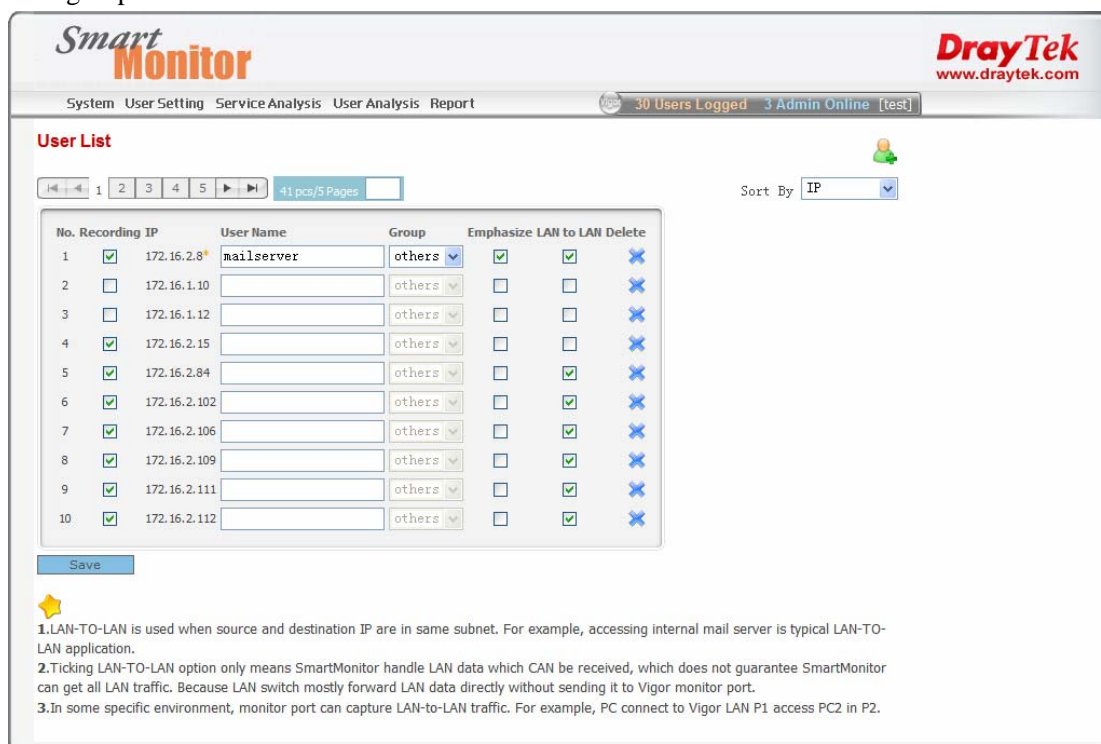
## 5. User Setting → User List

After corresponding Ethernet-card is selected, IPs captured will be shown here, tick the checkbox in front of one IP means this IP will be ‘monitored’.

We can also set “username” for each IP, it’s better to recognize name than ip address, isn’t?

In the beta version 1.0.0rc9, we can only 30 users’ data, so if more than 30 IPs in the list, you may make the choice that who should be monitored and who should be excluded.

‘Group’ setting is very useful if you want to group user and set different recording contents for each group.

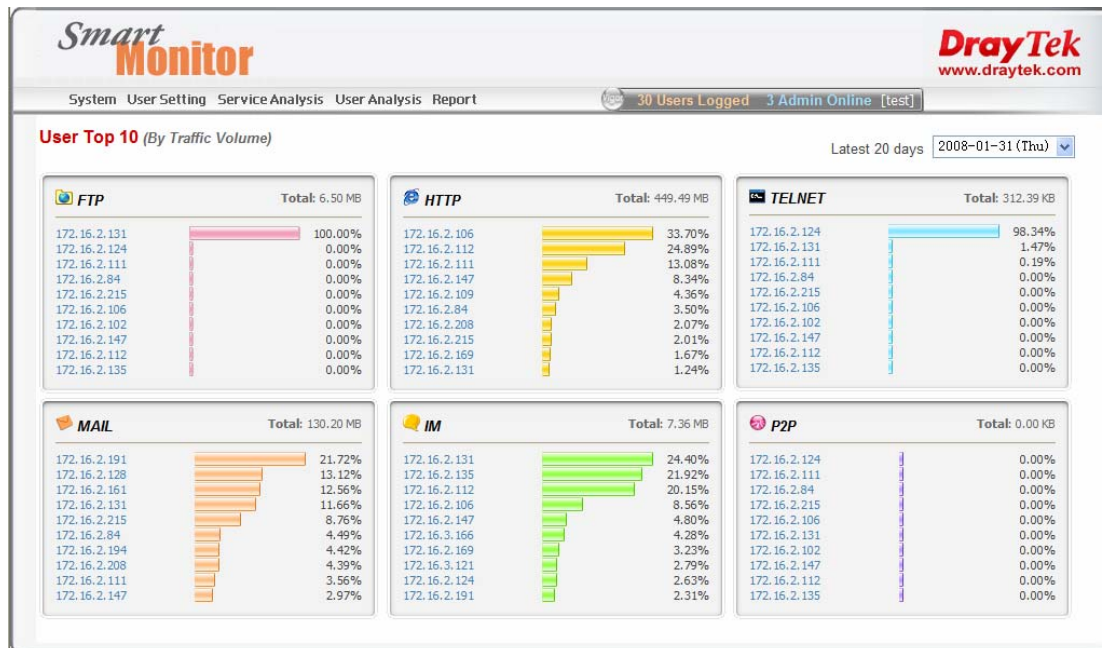


## 6. User Analysis → Top10

Smart Monitor will rank top10 IP/names in each service we are concerned.

Anonymous user can also view this page to check his individual status in the top10 list. If he/she is in the top IM list, he/she may know he should use less IM.. otherwise, he may be warned.

We call this 'self-management' mechanism.











## Part IV FAQ

### Question 1:

I can't see Login window, Smart Monitor is keeping trying to search Vigor.

### Answer:

Please check the following things.

1. Connection between Vigor router and Smart Monitor. You may refer to Part III.
2. Check the router firmware version to make sure which support Smart Monitor authentication
3. If step1, 2 is ok, please check your firewall settings, if you have enabled windows build-in firewall, please disable it, which may block Smart Monitor authentication.

### Question 2:

I'd installed Smart Monitor; however, I can't see any data recorded in corresponding pages.

### Answer:

1. Make sure connection between Smart Monitor and Vigor monitor port is ok.
2. Make sure you have enabled port monitor function in Vigor routers.

In Vigor 2910, the setting is in LAN-> LAN Port Mirror

In VigorPro 200B, Vigor 2950 and VigorPro 5500, Monitor port is enabled by default.

3. If you have multiple Ethernet card, you may choose the one connect to Vigor monitor port as data source interface. You may refer to step 2 in Part II.

Please do make sure you choose the right interface, otherwise you can't capture anything.