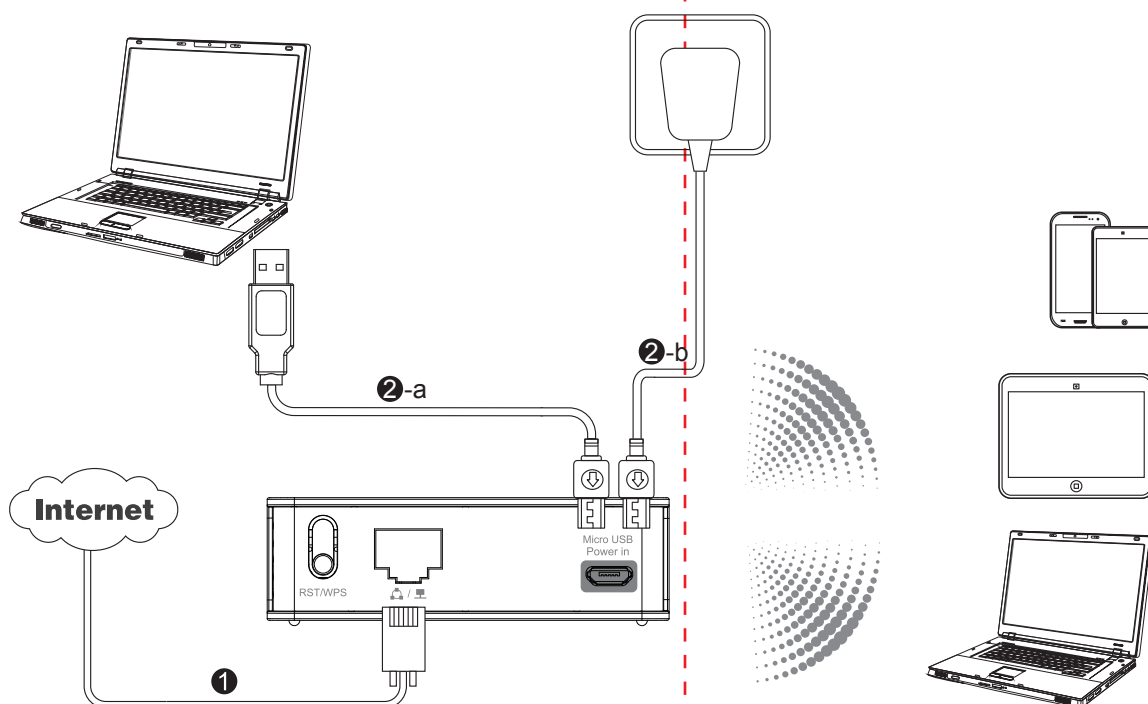


## Quick Installation Guide

### 150Mbps Wireless N Portable AP

Copyrights 2013 by TOTOLINK All rights reserved. Website: <http://www.totolink.net>  
Information in this document is subject to change without prior notice.

# 1 Hardware Installation



### Ports and Buttons

Ports and Buttons	Description
RST/WPS	Press this button for 2-3 seconds, the power LED indicator keeps solid light, it is WPS working. If press for about 10 seconds, the device will restore to factory settings.
Micro USB Power in	This port is used for power-in NOTE: the charging wire we provided can only be used for charging, data transmission not supported.
Router/AP	This port connects the AP to Internet.
	This slide switch allows users to switch device mode between Router & AP.

### LED Indicators

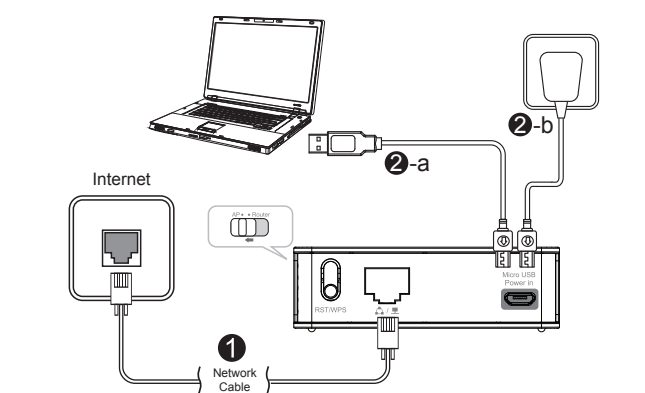
LED Indicators	Description
	This LED indicator lights orange when this device gets power.
	When there is WLAN connection, this indicator blinks orange.
	This LED indicator lights orange when it is connected and working.

• The default Network Name (SSID): TOTOLINK iPuppy III

# 2 Working Modes

## AP Mode

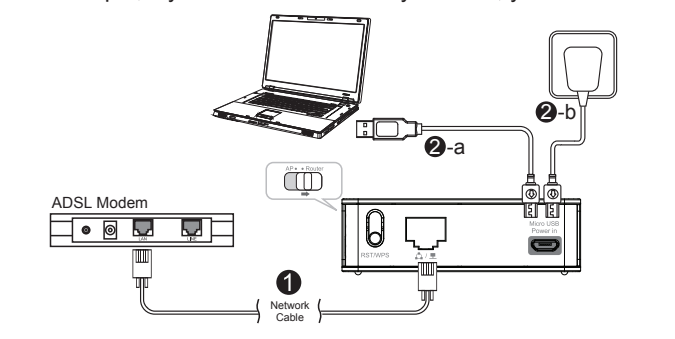
In this mode, you can access Internet by just two steps.



- 1 Plug existing network cable into the LAN/WAN port of iPuppy III.
  - 2 Connect iPuppy III to PC or Power Adapter using provided USB cable.
- Now, you can search for the SSID of iPuppy III and enter the password to access Internet. Generally, this mode is applied in hotels, restaurants and small offices.

## Router Mode

This mode makes iPuppy III work like a wireless router. It supports three methods to access Internet: DHCP/PPPoE/Static IP. For example, if you connect Internet by modem, you will have to:



- 1 Connect your Modem and iPuppy III using network cable.
- 2 Connect iPuppy III to PC or Power Adapter using provided USB cable.
- 3 Go to Setup interface of this device to make it connect Internet successfully (Please refer to Section 3 Set up AP).

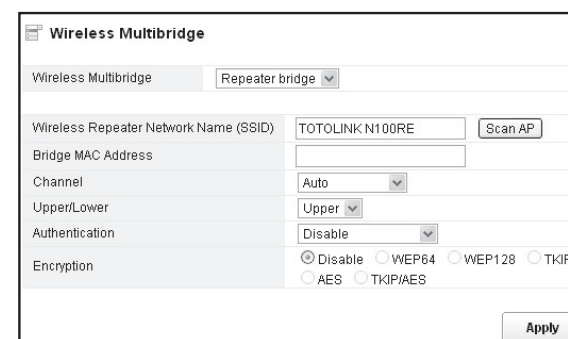
After correct configuration, you can search for the SSID and enter the password to access Internet. This mode is mostly applied at home and in student hostels.

**NOTE:** If you want to change the SSID and password of this device, you must connect to it in Router Mode (Please refer to Part 3-6).

## Repeater

This function allows iPuppy III to get wireless signals from other router or AP. Sometimes, the wireless signal your PC gets is very weak because of distance. Then you can use the repeater of iPuppy III to solve this problem. Please follow below steps to setup repeater function:

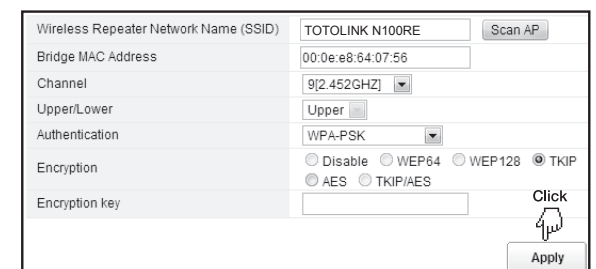
- 1 Login to Setup interface of this device to make it connect Internet successfully (Please refer to Section 3 Configure Router.)
- 2 Go to Wireless—Wireless Multibridge to set your repeater parameters. See below:



- 3 Click Scan AP, it will pop up a window requiring you to choose one Repeater Network Name.

Channel	SSID	BSSID	Authentication Type	RSSI	Mode
9	TOTOLINK N100RE	00:0E:A8:54:07:56	WPA2-PSK/TKIP	72%	11b/g
9	SPINE-e5024	00:0B:8F:5C:33:60	WEP/OPEN	84%	11b/gn

- 4 Choose the right one and click Select AP. It will turn back to Multibridge page which shows you some information of this SSID:



- 5 Then you can set the encryption for this connection and click Apply to make the repeater operation work.

# 3 Configure Router

Please set up the router following the below steps.

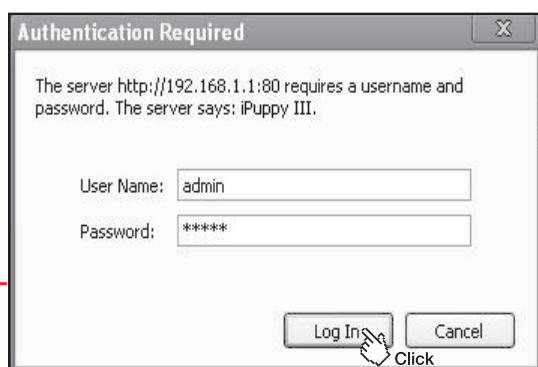
- 1 Run the Web browser.



- 2 Type 192.168.1.1 in the Web browser address bar, then press Enter.

Now, you can search for the SSID of iPuppy III and enter the password to access Internet. Generally, this mode is applied in hotels, restaurants and small offices.

- 3 Input User Name and Password and then click "Log In" (the default User Name and Password are "admin").



- 4 Click Setup Wizard.



- 1 Internet Configuration Wizard.

Internet Configuration Wizard	
A	DHCP(Cable)
B	Static IP
C	PPPoE(ADSL)

Access Internet Mode Judgement Method	
Internet Access Mode	Parameters that provided by ISP (Service Provider)
A	DHCP(Cable)
B	Static IP
C	PPPoE

- A DHCP (you don't need to do any configuration.)

Internet Configuration Wizard	
A	DHCP(Cable)
B	Static IP
C	PPPoE(ADSL)

- B Static IP

Internet Configuration Wizard	
A	DHCP(Cable)
B	Static IP
C	PPPoE(ADSL)

- C PPPoE

Internet Configuration Wizard	
A	DHCP(Cable)
B	Static IP
C	PPPoE(ADSL)

- 2 For a secure connection, WPA2-PSK is recommended for you to protect your network.

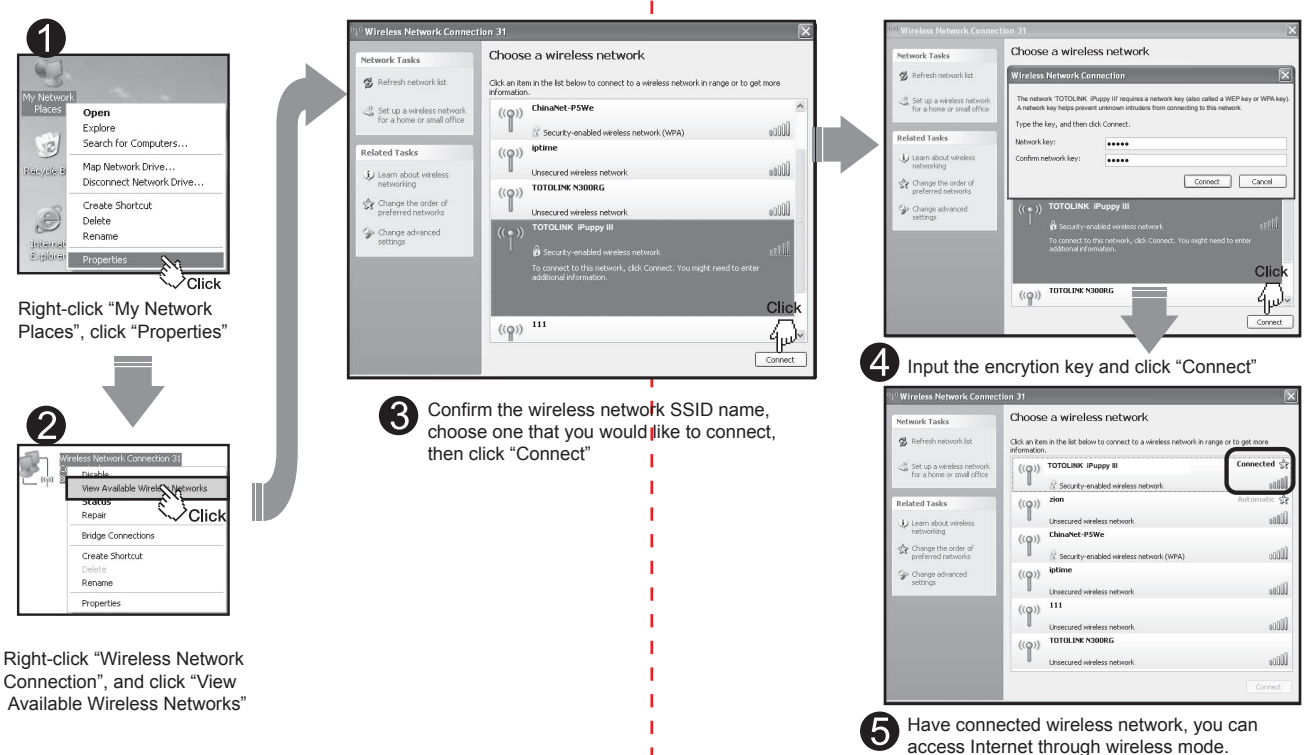


**NOTE:** After you set the Encryption key, please remember your Network Name (SSID) and the Encryption key to connect with your wireless LAN.

With iPuppy III powered on, press the RST/WPS button for 2-3 seconds, the Power LED indicator changes to solid lighting, it is WPS working. For about 10 seconds, it is Reset working, the AP will reboot to factory default settings.

# 4 Wireless Network Connection

## PC connect to iPuppy III



## Android Phone connect to iPuppy III



## iPhone connect to iPuppy III

